



**MAILBOX UNIT
FOR LASER PRINTER**

PARTS REFERENCE LIST

MODEL: MX-2001/MX-2002

MECHANISMS & ELECTRONICS

NOTE FOR USING THIS PARTS REFERENCE LIST

1. In the case of ordering parts, it needs mentioning the following items:

- (1) Code
- (2) Q'ty
- (3) Description
- (4) Symbol (PCB No., Revision , and Parts location mounted on the PCB.)

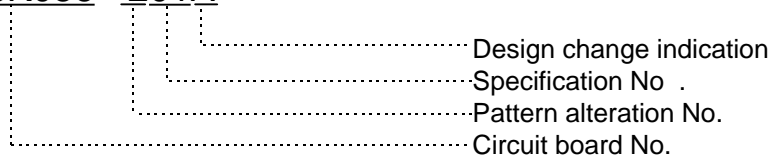
Note : No orders without Parts Code or Tool No. can be accepted.

< Example >

REF.NO.	CODE	Q'TY	DESCRIPTION	SYMBOL	REMARK

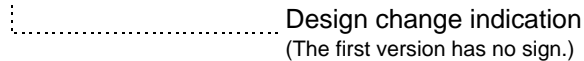
Revision No.: marked on the **main printed circuit board**.

B48K056 - 201A



Revision No.: marked on the **power supply printed circuit board**.

Rev. A



2. Design-changed parts :

If the parts are changed, any one of the following symbols is indicated in the REMARKS column.

- #A : compatible between old and new
- #B : replaceable from old to new
- #D : incompatible
- # : newly established

3. The original of this list was made based on the information available in October, 1998.

4. Parts are subject to change in design without prior notice.

1. UNDER FRAME UNIT

REF.NO.	CODE	Q'TY	DESCRIPTION	REMARK
1	UK4325000	1	PHOTO INTERRUPTER:1241	
2	UK4314001	1	ENTRANCE SENSOR HARNESS 3P	
3	UH3904001	1	SHEET U	
4	UH3990001	1	PROTECT SHEET U	
5	UH3907001	1	ACTUATOR U	
6	UH3908001	1	FEED ROLLER U ASSY	
7	UH3912001	1	GROUND WIRE U	
8	UH3913001	1	FLAP U	
9	UH3915001	1	SPRING 35	
10	UH3916001	1	SPRING 40	
11	UH3917001	1	SOLENOID U	
12	060300416	2	SCREW, BIND M3X4	
13	087411216	3	TAPTITE, CUP B M4X12	
14	087311016	1	TAPTITE, CUP B M3X10	
15	087411216	4	TAPTITE, CUP B M4X12	
16	087320616	4	TAPTITE, CUP S M3X6	

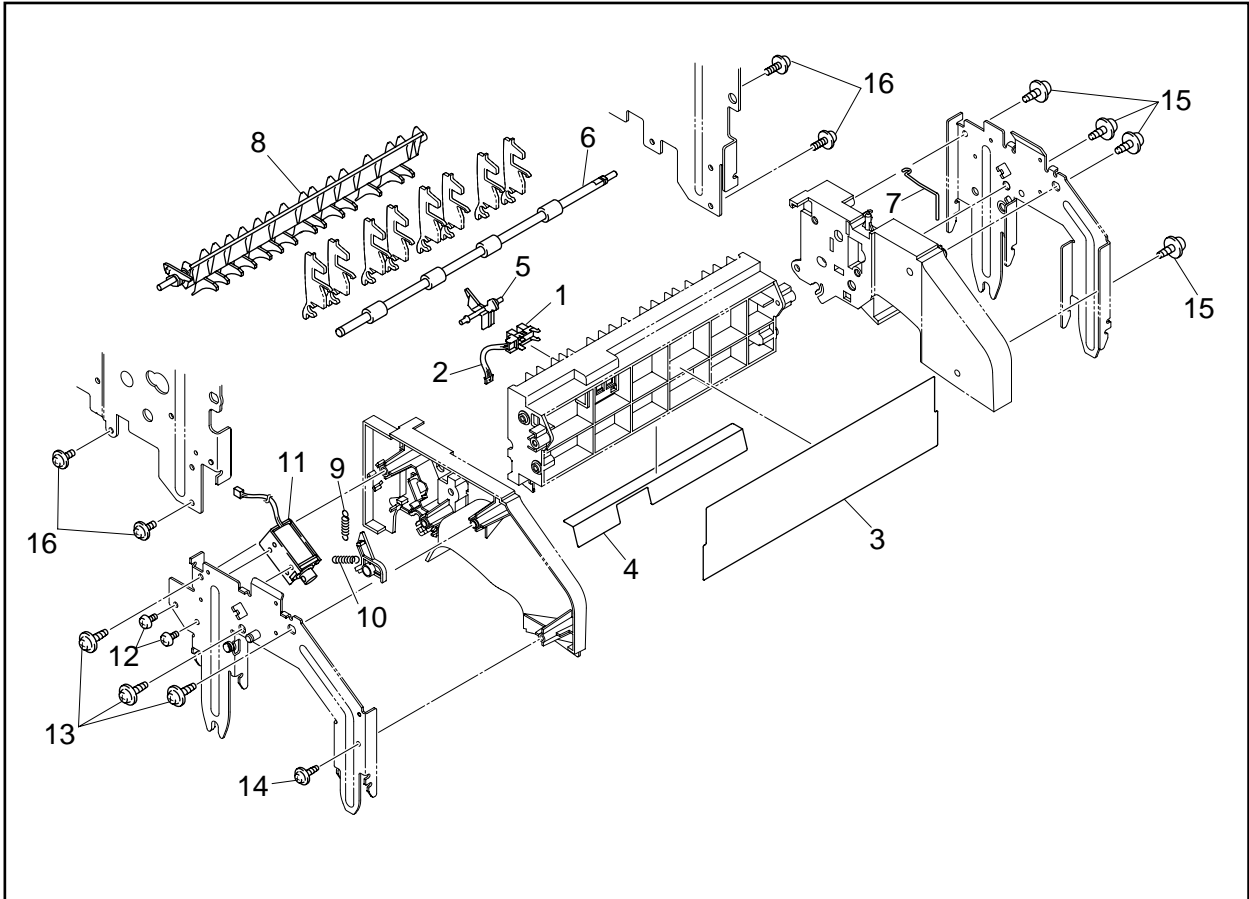
MODEL MX-2001 54T-X20-500

2. UNDER UNIT COVERS

REF.NO.	CODE	Q'TY	DESCRIPTION	REMARK
1	UH3930001	1	COVER UL	
2	UH3931001	1	COVER UR	
3	087320616	4	TAPTITE, CUP S M3X6	
4	UH3932001	4	SCREW COVER SHEET	
5	UH3933001	1	REAR COVER U ASSY	
5-1	UH3935001	4	FEED ROLLER SPRING	
5-2	UH3936001	4	PRESSURE ROLLER U	

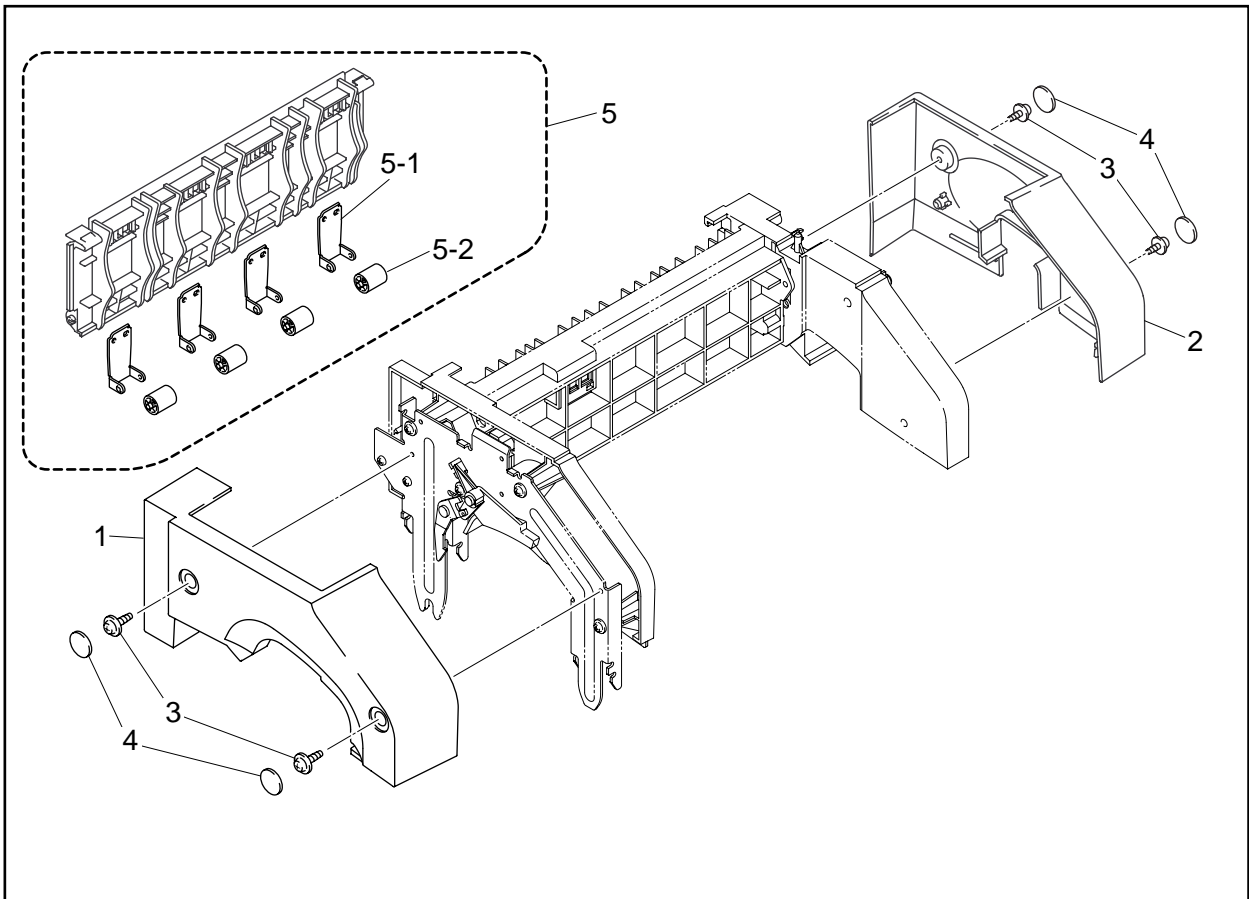
MODEL MX-2001 54T-X20-510

1. UNDER FRAME UNIT



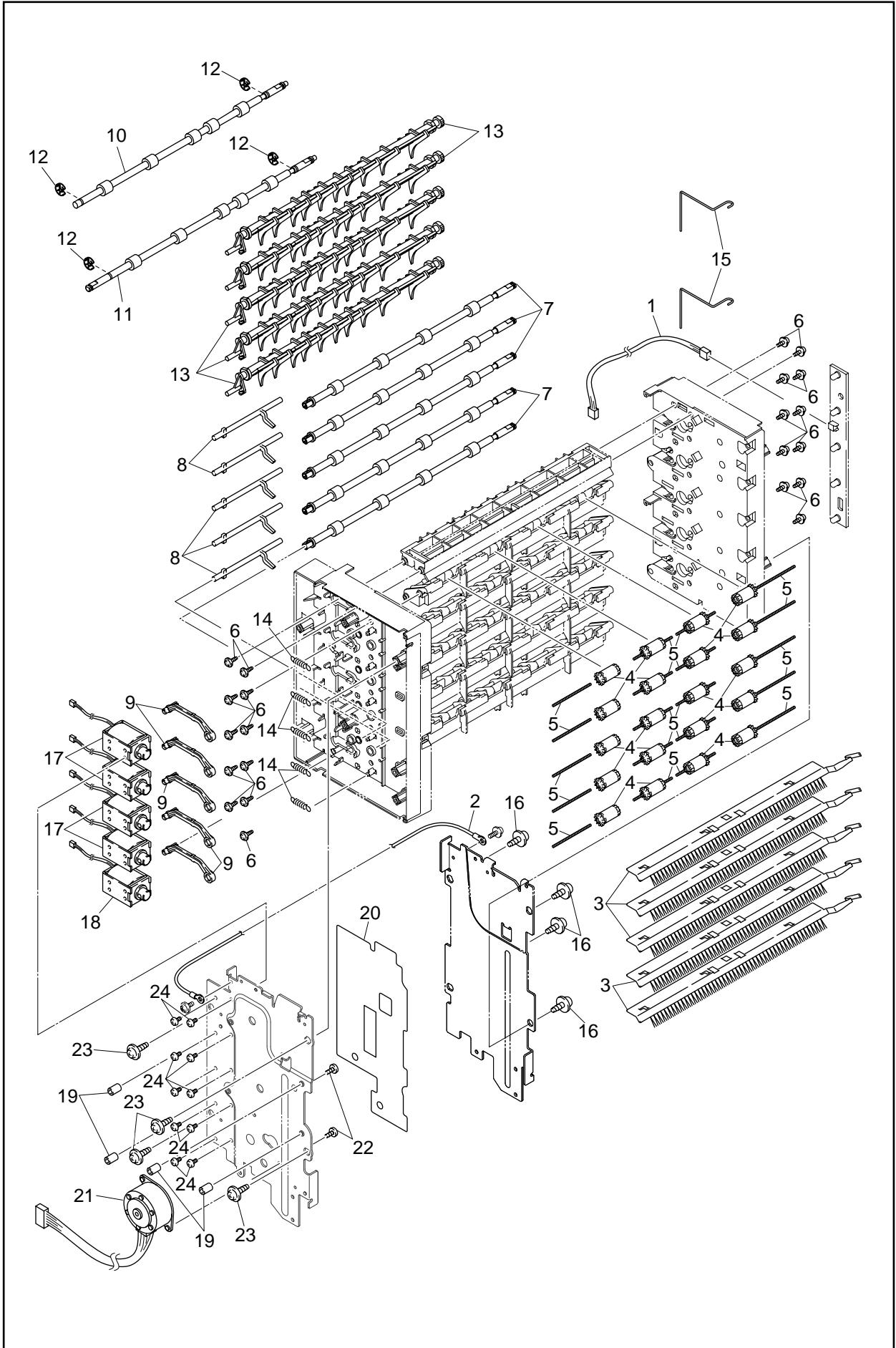
MODEL MX-2001 54T-X20-500

2. UNDER UNIT COVERS



MODEL MX-2001 54T-X20-510

3. MAIN FRAME UNIT



MODEL MX-2001/2002 54T-X20/X30-600

3. MAIN FRAME UNIT

REF.NO.	CODE	QTY	DESCRIPTION	REMARK
1	UK4298001	1	INFRARED LED HARNESS 2P	
2	UK4319001	1	MX GROUND WIRE	
3	UH3939001	5	DISCHARGING BRUSH ASSY	
4	UH3323001	20	EJECT PINCH ROLLER ASSY	
5	UH3948001	20	PINCH SPRING	
6	087311016	22	TAPTITE, CUP B M3X10	
7	UH3951001	5	EJECT ROLLER ASSY	
8	UH3953001	5	ACTUATOR A	
9	UH3954001	5	ACTUATOR B	
10	UH3955001	1	FEED ROLLER A ASSY	
11	UH3957001	1	FEED ROLLER B ASSY	
12	048040346	4	WASHER E4	
13	UH3959001	5	MAIN FLAP	
14	UH3916001	5	SPRING 40	
15	UH3962001	2	GROUND WIRE	
16	087411216	4	TAPTITE, CUP B M4X12	
17	UH3964001	4	SOLENOID A	
18	UH3965001	1	SOLENOID B	
19	UH3970001	4	SPACER	
20	UH3971001	1	INSULATION SHEET	
21	UH1565001	1	FEEDING MOTOR ASSY	
22	060300416	2	SCREW, BIND M3X4	
23	087411216	4	TAPTITE, CUP B M4X12	
24	060300416	10	SCREW, BIND M3X4	

MODEL MX-2001/2002 54T-X20/X30-600

4. COVERS

REF.NO.	CODE	Q'TY	DESCRIPTION	REMARK
1	UH3973001	5	BIN	
2	UH3974001	2	REAR COVER A ASSY	
2-1	UH3935001	8	FEED ROLLER SPRING	
2-2	UH2360000	8	PRESSURE ROLLER	
3	UH3977001	1	COVER L	
4	UH3978001	1	COVER R	
5	087320616	2	TAPTITE, CUP S M3X6	
6	UH3932001	1	SCREW COVER SHEET	
7	UH3993001	1	SCREW COVER SHEET L	
8	UH3979001	1	UPPER SHEET	
9	UH3981001	1	FRONT SHEET A (MX-2001)	
9	UH3987001	1	FRONT SHEET B (MX-2002)	
10	UH3989001	1	PAPER STOPPER	

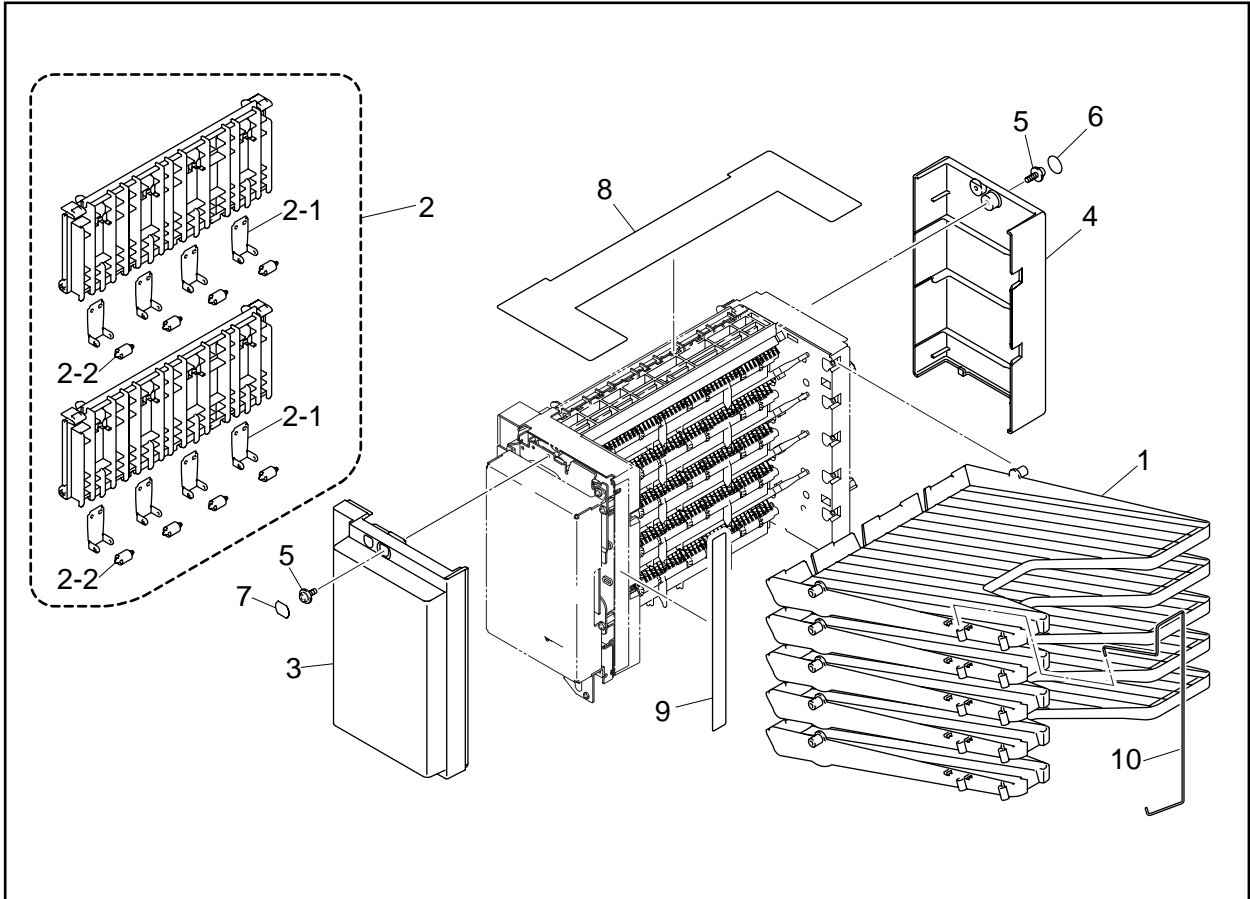
MODEL MX-2001/2002 54T-X20/X30-610

5. PCBS

REF.NO.	CODE	Q'TY	DESCRIPTION	SYMBOL	REMARK
1	UK4283001	1	MAIN PCB ASSY A (MX-2001)	B512015-200C	
1	UK4284001	1	MAIN PCB ASSY B (MX-2002)	B512015-201C	
2	UH3901001	5	SENSOR GUIDE		
3	087311016	4	TAPTITE, CUP B M3X10		
4	UK4288001	1	I/F PCB ASSY A (MX-2001)	B512017-200B	
4	UK4289001	1	I/F PCB ASSY B (MX-2002)	B512017-201B	
5	087321616	4	TAPTITE, CUP S M3X16		
6	UK4293001	1	SENSOR PCB ASSY	B512016	
7	087311016	2	TAPTITE, CUP B M3X10		
8	UK4317001	1	LED PCB ASSY (MX-2001)	B512036	

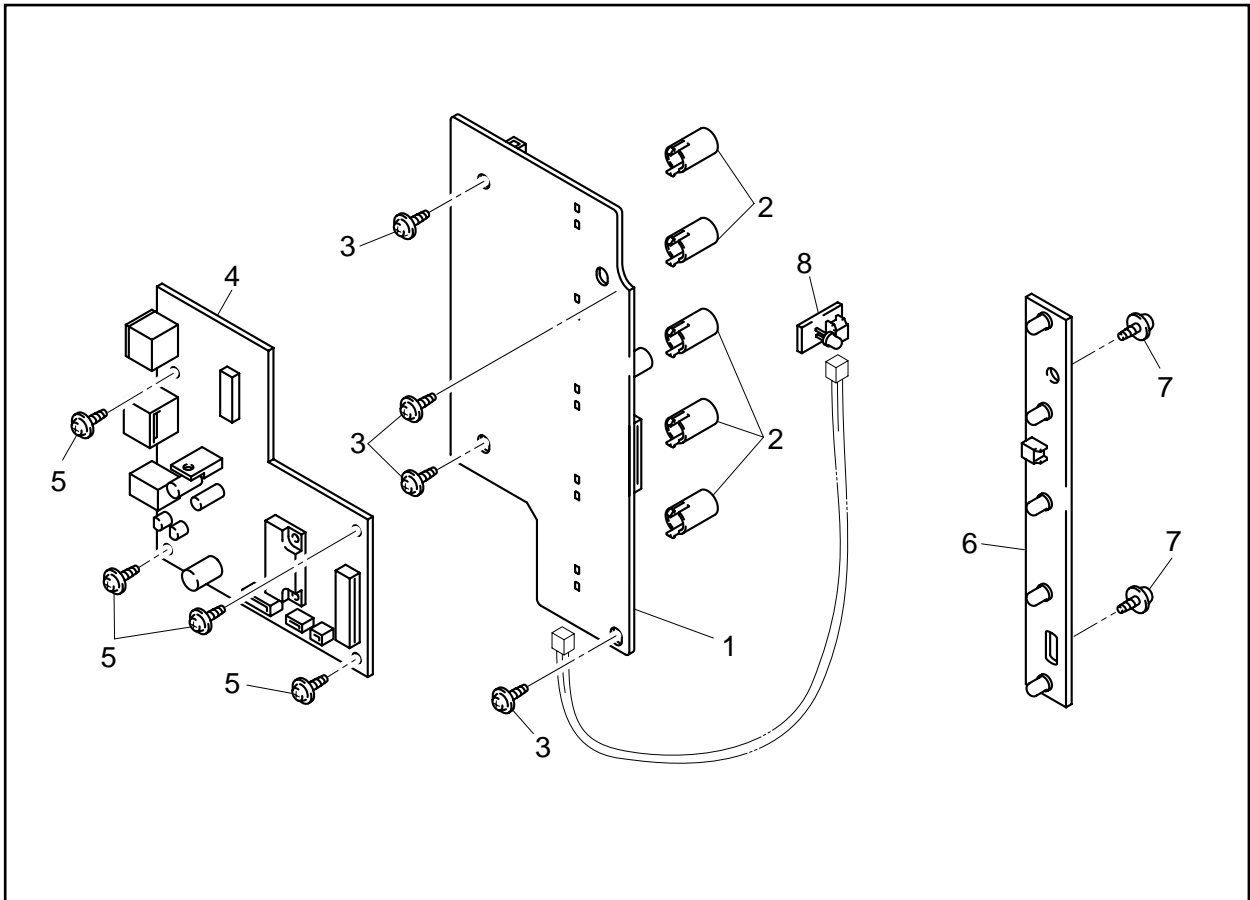
MODEL MX-2001/2002 54T-X20/X30-100

4. COVERS



MODEL MX-2001/2002 54T-X20/X30-610

5. PCBS



MODEL MX-2001/2002 54T-X20/X30-100

6. PCB RELATED

REF.NO.	CODE	Q'TY	DESCRIPTION	REMARK
1	UK4297000	1	FLAT CABLE	
2	UK4299001	1	LED HARNESS 2P (MX-2001)	
3	087320616	2	TAPTITE, CUP S M3X6	
4	UH3992001	1	PCB COVER A (MX-2001)	
4	UH3982001	1	PCB COVER B (MX-2002)	
5	087320616	4	TAPTITE, CUP S M3X6	

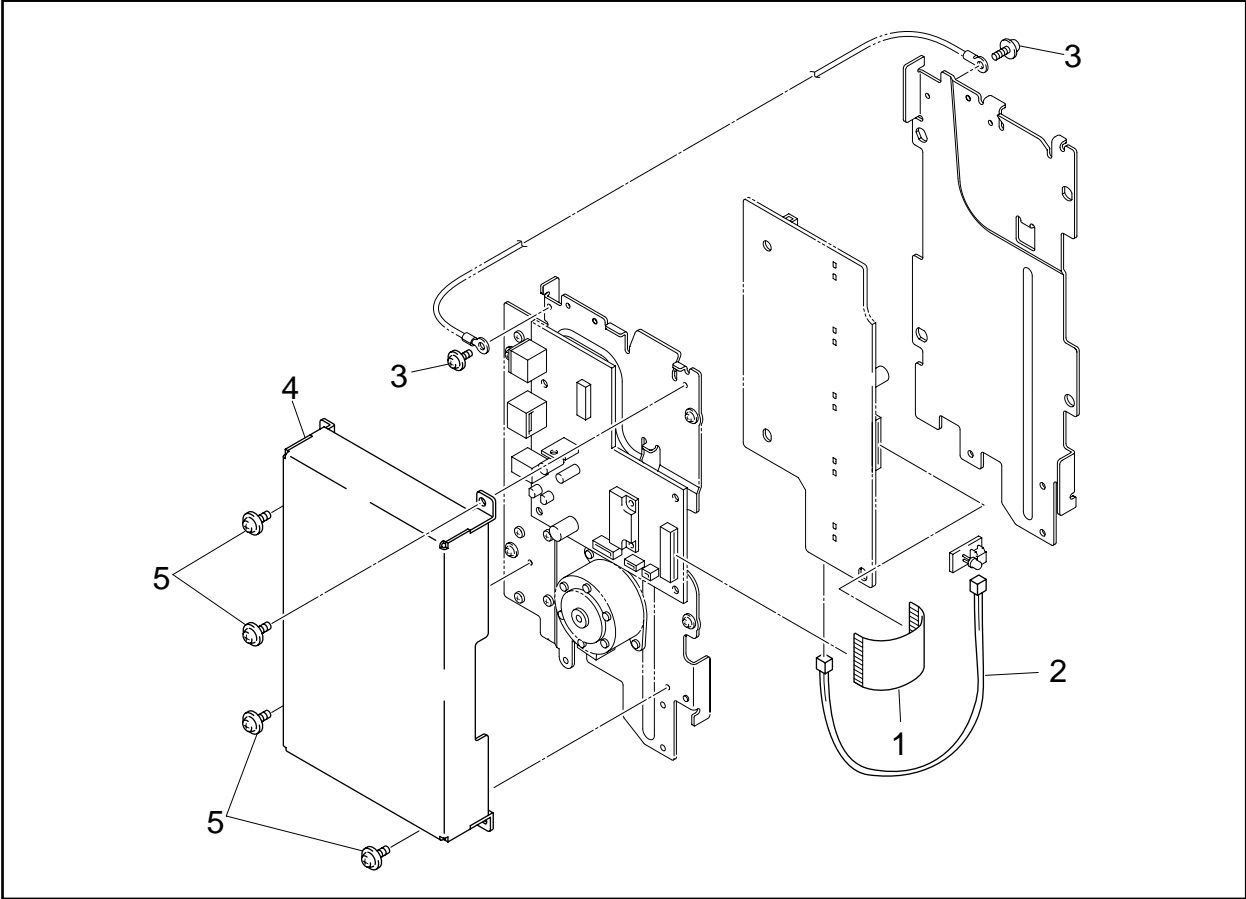
MODEL MX-2001/2002 54T-X20/X30-110

7. POWER SUPPLY

REF.NO.	CODE	Q'TY	DESCRIPTION	REMARK
1	UK4300001	1	MX AC ADAPTER	

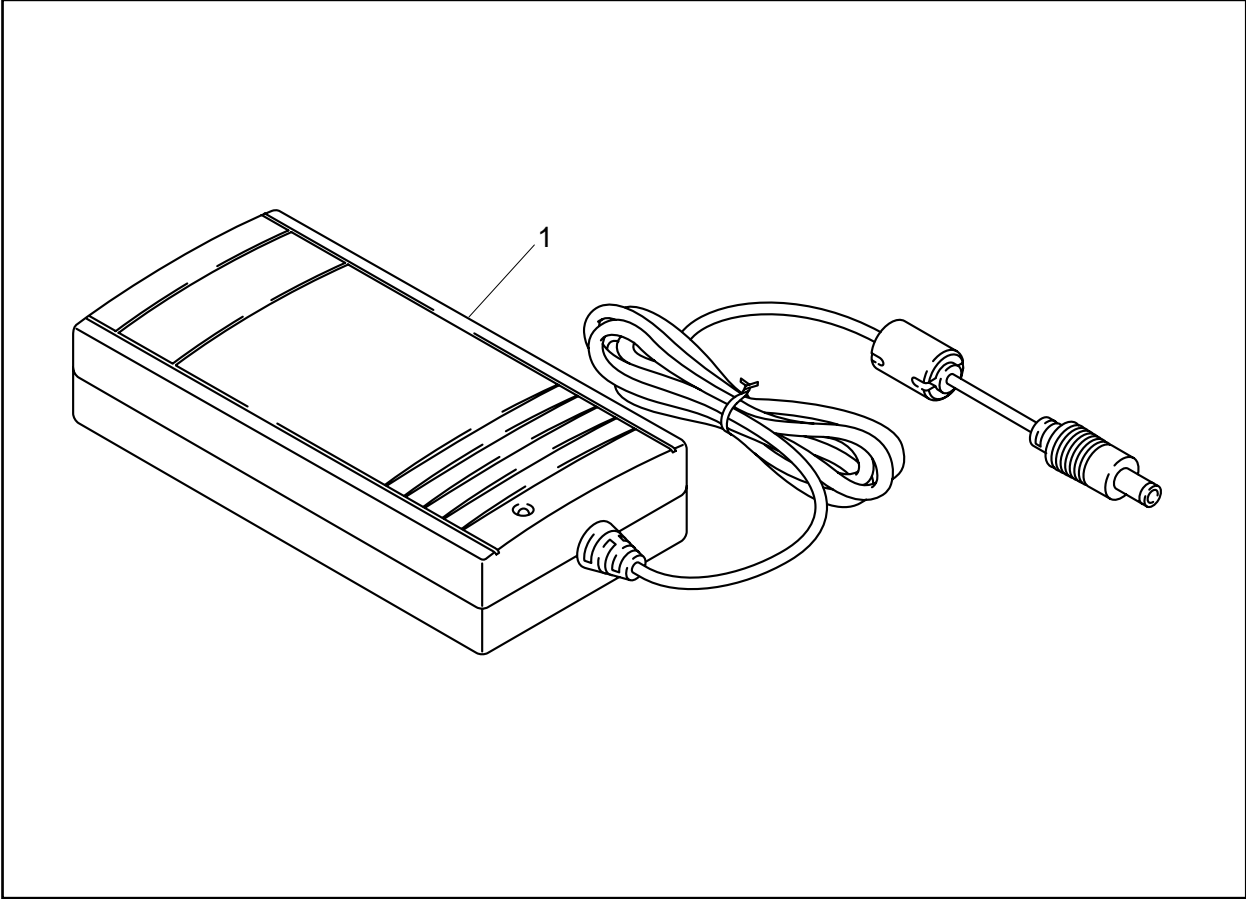
MODEL MX-2001 54T-X20-200

6. PCB RELATED



MODEL MX-2001/2002 54T-X20/X30-110

7. POWER SUPPLY



MODEL MX-2001 54T-X20-200

8. AC CORD

REF.NO.	CODE	Q'TY	DESCRIPTION	REMARK
1A	UK4301001	1	AC CORD, EUR	
1B	UK4302001	1	AC CORD, SAA	
1C	UK4303001	1	AC CORD, BS	
1D	UK4332001	1	AC CORD UL/CSA ASSY	

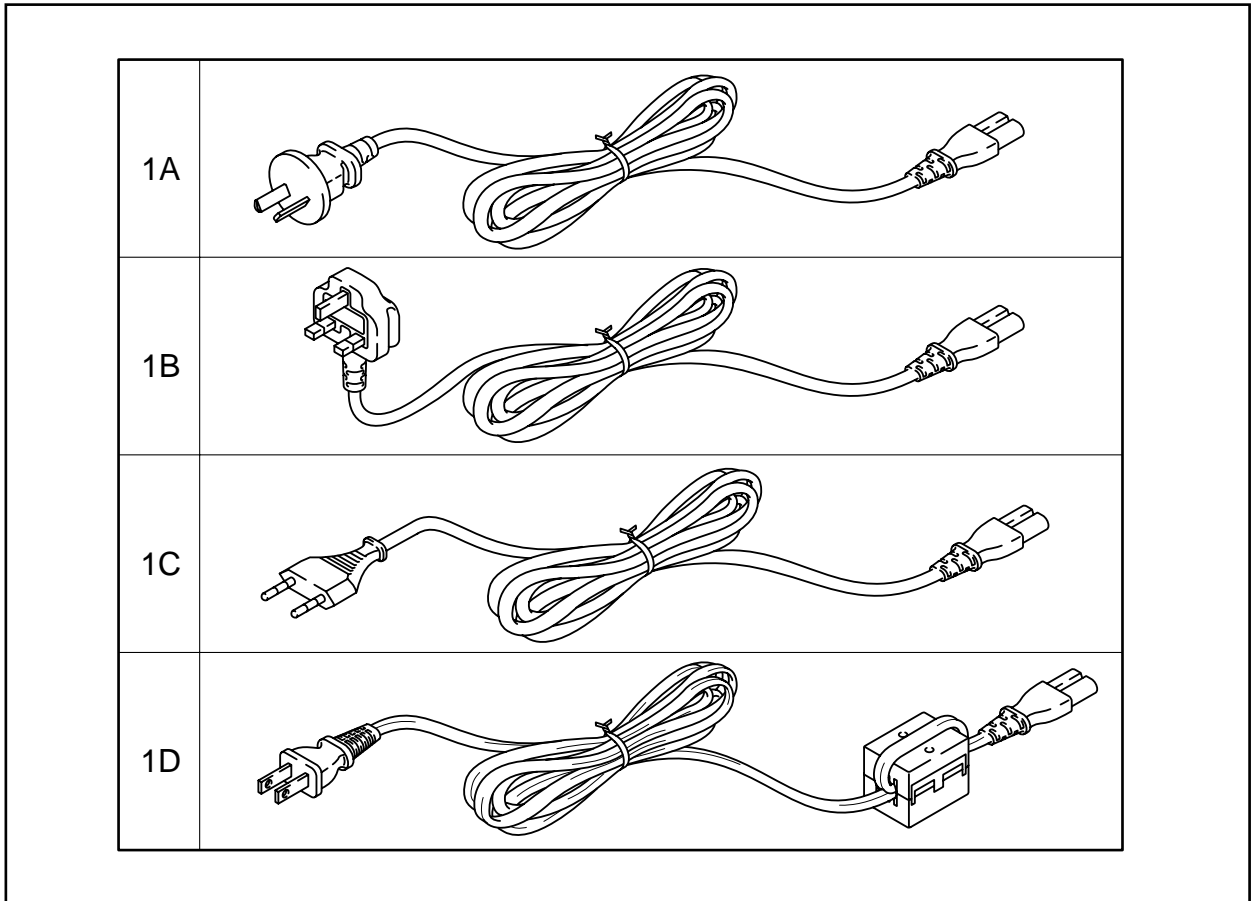
MODEL MX-2001 54T-X20-230

9. ACCESSORIES

REF.NO.	CODE	Q'TY	DESCRIPTION	REMARK
1	UH3995001	1	USER'S GUIDE, MX-2000	
2	UK4305001	1	MODULAR CORD 8P (MX-2001)	
3	060300814	2	SCREW, BIND M3X8 (MX-2002)	
4	UE0331001	1	BAG, 215X350H	

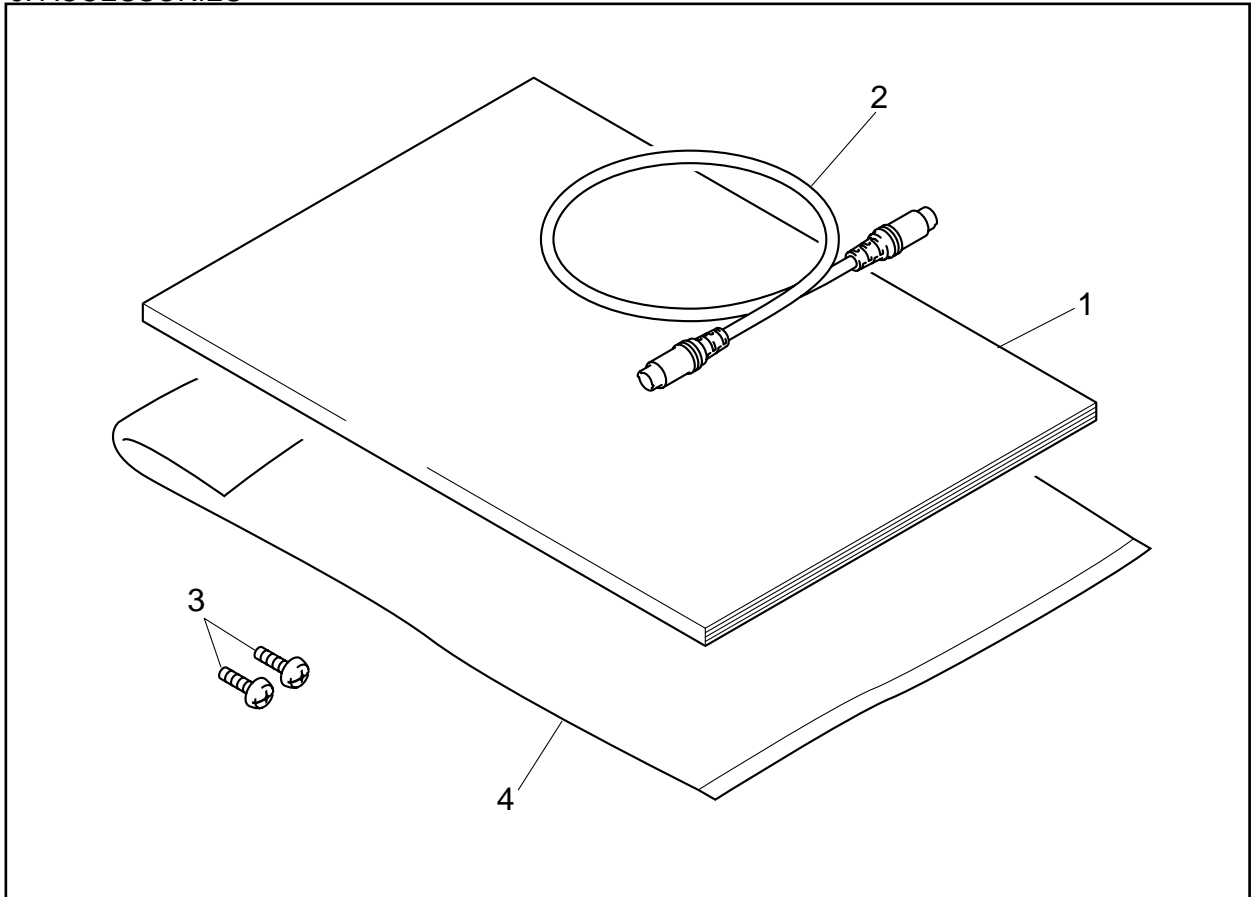
MODEL MX-2001/2002 54T-X20/X30-920

8. AC CORD



MODEL MX-2001 54T-X20-230

9. ACCESSORIES



MODEL MX-2001/2002 54T-X20/X30-920