



OPTIONS IMPRIMANTES

DF-30

NOMENCLATURE

03-12-1998

DF-30 Pièces détachées

Table des matières

DF-30 Vue d'ensemble (Fig.0).....	3
Accessoires (Fig.1).....	5
Capots externes / Partie 1 (Fig.2a).....	7
Capots externes / Partie 2 (Fig.2b).....	9
Sous ensembles – Partie 1 (Fig.3a).....	11
Sous ensembles – Partie 2 (Fig.3b).....	13
Sous ensembles – Partie 3 (Fig.4).....	16
Ensemble mécanique (Fig.5).....	18
Support des plateaux (Fig.6).....	20
Guide de décalage (Fig.7).....	22
Support de l'agrafeuse – Partie 1 (Fig.8a).....	24
Support de l'agrafeuse – Partie 2 (Fig.8b).....	27
Sortie papier supérieure (Fig.9).....	29
Guide de centrage (Fig.10).....	31
Agrafeuse*, (Fig.11).....	33
Position des cartes électroniques (Fig.12).....	35

Introduction

Les figures qui suivent représentent l'assemblage de l'imprimante ou des options, par sous-ensembles.

Les informations suivantes sont indiquées après chaque pièce :

N°	N° de la pièce dans l'éclaté
Référence.....	Référence de la pièce
Description	Description de la pièce (en anglais)

Seules les pièces en caractères GRAS peuvent être commandées.

Toutes les autres pièces sont mentionnées à titre indicatif et ne sont pas disponibles.

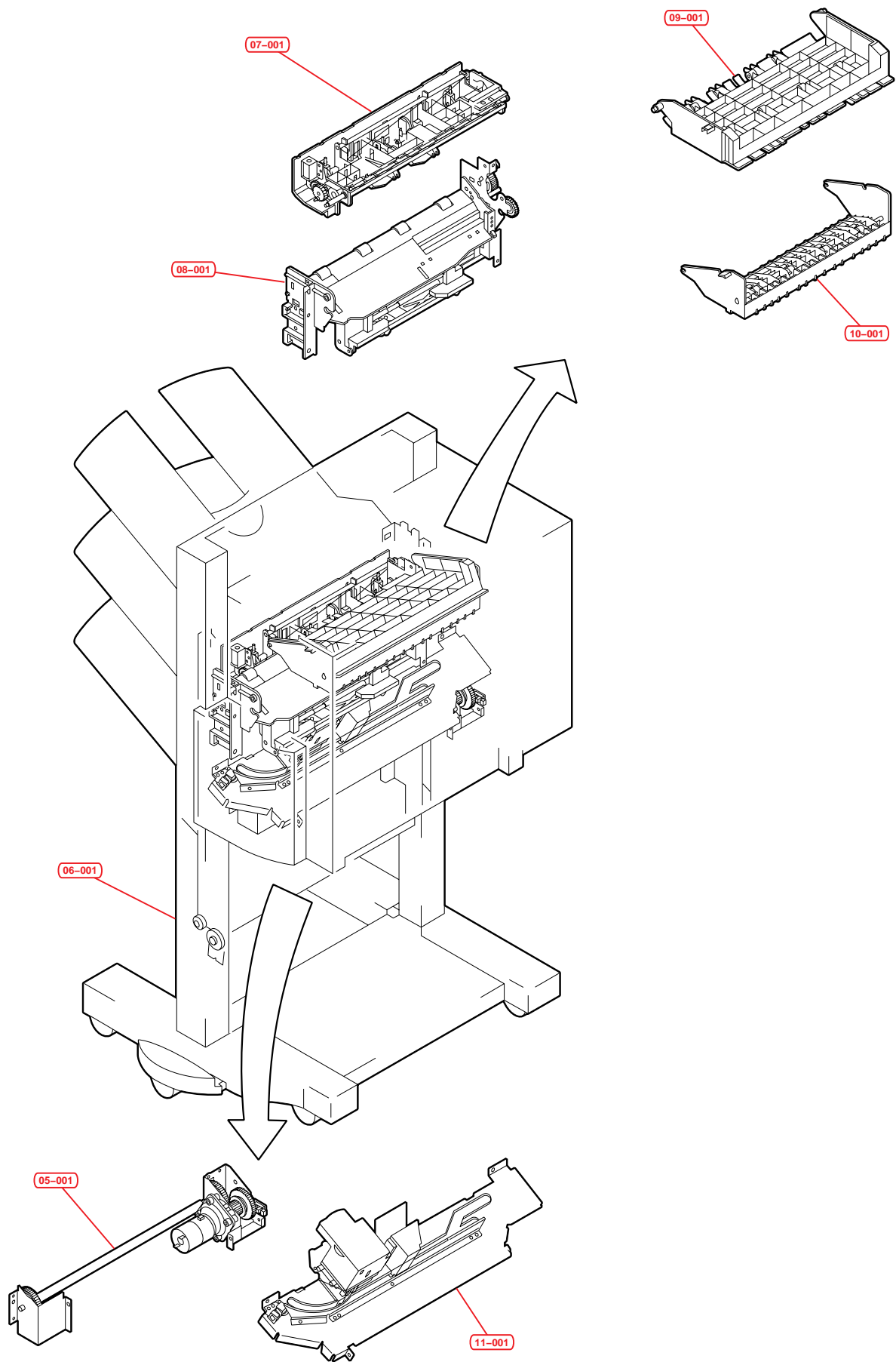


Fig.0 - DF-30 Vue d'ensemble

N°	Référence	Description
05-001	NSADF30E05	TRAY DRIVE ASSY
06-001	NSADF30E06	TRAY ASSY
07-001	NSADF30E07	SWING GUIDE ASSY
08-001	NSADF30E08	STAPLER TRAY ASSY
09-001	NSADF30E09	UPPER FEEDER ASSY
10-001	NSADF30E10	CENTER GUIDE ASSY
11-001	NSADF30E11	STAPLER ASSY

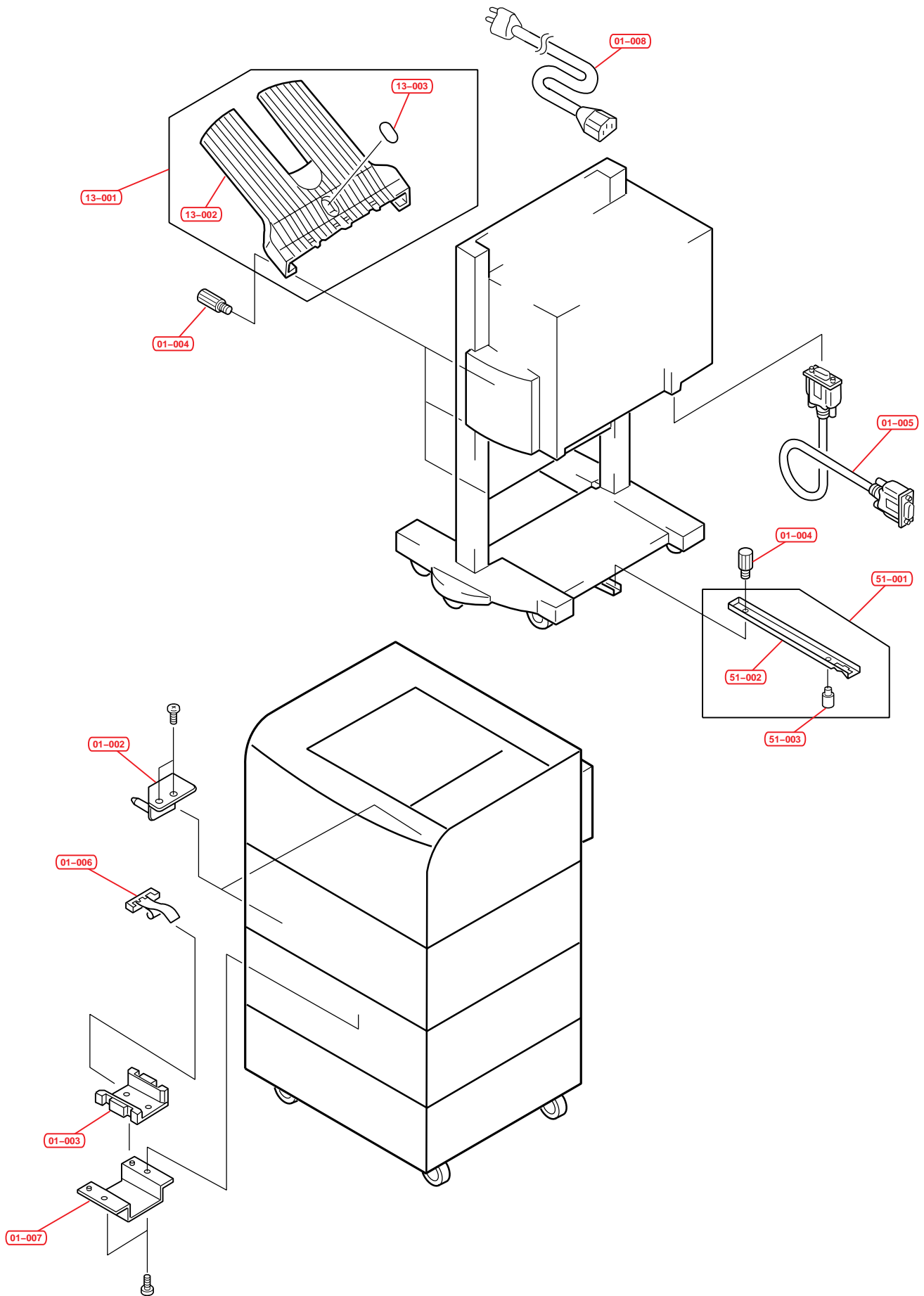


Fig.1 – Accessoires

N°	Référence	Description
01-001	NSADF30E01	ATTACHMENT PARTS
01-002	NSP0011793	GUIDE
01-003	NSP0011796	RAIL GUIDE
01-004	NSP0011797	SCREW TRAY M4
01-005	NSP0011798	CABLE INTERFACE
01-006	NSP0011801	GROUND ADAPTOR UNIT
01-007	NSP0011802	BRACKET
01-008	NSP0012305	CABLE AC Japan
01-008	NSP0012309	CABLE AC France
01-008	NSP0012306	CABLE AC USA
01-008	NSP0012307	CABLE AC UK
01-008	NSP0012308	CABLE AC AUSTRALIA
01-008	NSP0012309	CABLE AC GERMANY
13-001	NSADF30E13	TRAY ASSY
13-002	NSP0011799	TRAY
13-003	NSP0011800	SHEET REFLECTING
51-001	NSADF30E51	UNIT RAIL
51-002	NSP0011794	RAIL
51-003	NSP0011795	SCREW STEPPED M4

N°	Référence	Description
02-001	NSADF30E02	EXTERNAL COVERS PANELS
02-002	NSP0011803	GUIDE HURDLE TOP
02-003	NSP0011804	CAP COVER FRONT
02-004	NSP0011805	CAP COVER REAR
19-001	NSADF30E19	PLATE SHUTTER
19-002	NSP0011820	DAMPER
19-003	NSP0011821	DAMPER SHUTTER
19-004	NSP0011846	GASKET
19-005	NSP0011849	PLATE SHUTTER
19-006	NSP0012292	CLAMP CABLE
20-001	NSADF30E20	SLIDE GUIDE ASSY
20-002	NSP0011826	GUIDE SLIDE
20-003	NSP0011827	COVER SLIDE FRONT
20-004	NSP0011833	COVER SLIDE REAR
23-001	NSADF30E23	GUIDE HURDLE UNIT
23-002	NSP0011818	SHUTTER HURDLE
23-003	NSP0011819	SPRING LEAF
23-004	NSP0011822	GUIDE HURDLE LOWER
23-005	NSP0011823	PLATE HURDLE
23-006	NSP0012286	CABLE
23-007	NSP0011824	PHOTO-INTERRUPTER
23-008	NSP0011825	PLATE HURDLE 2
23-009	NSP0011841	SPRING LEAF
23-010	NSP0011842	PLATE

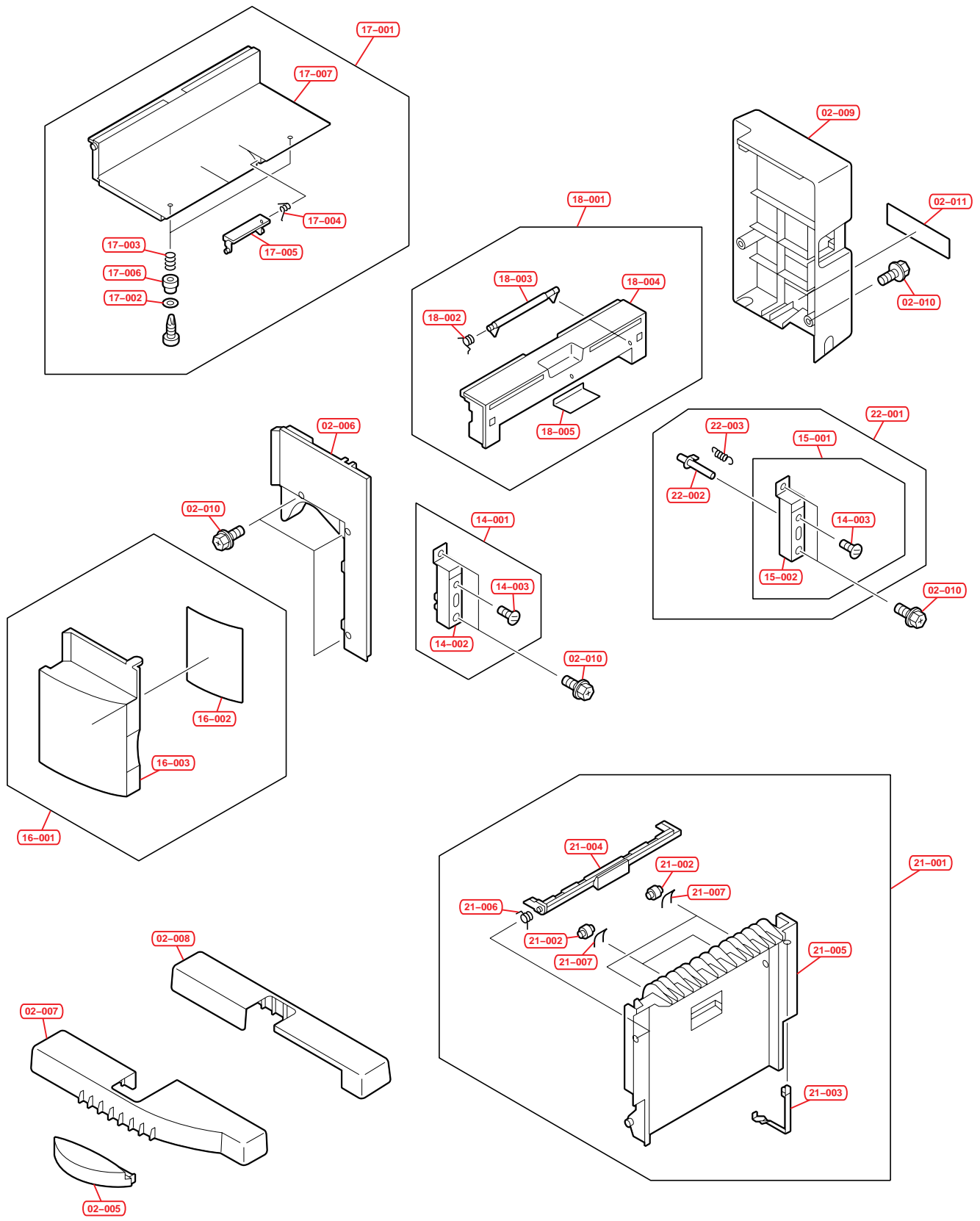


Fig.2b – Capots externes / Partie 2

N°	Référence	Description
02-005	NSP0011806	COVER CASTER
02-006	NSP0011807	COVER FRONT
02-007	NSP0011808	COVER LOWER FRONT
02-008	NSP0011809	COVER LOWER REAR
02-009	NSP0011810	COVER REAR
02-010	NSP0012287	SCR RS M4*8
02-011	VVSDF30*01	LABEL
14-001	NSADF30E14	LATCH FRONT
14-002	NSP0011851	LATCH FRONT
14-003	NSP0011843	MAGNET
15-001	NSADF30E15	LATCH REAR
15-002	NSP0011852	LATCH REAR
16-001	NSADF30E16	COVER DOOR
16-002	NSP0011811	LABEL OPERATION
16-003	NSP0011850	COVER FRONT
17-001	NSADF30E17	TOP DOOR ASSY
17-002	NSP0012285	WASHER
17-003	NSP0011812	SPRING COMPRESSION
17-004	NSP0011813	SPRING TORSION
17-005	NSP0011814	LATCH
17-006	NSP0011815	PIECE PRESSURE
17-007	NSP0011847	TOP DOOR
18-001	NSADF30E18	TOP COVER ASSY
18-002	NSP0011816	SPRING TORSION
18-003	NSP0011817	ARM SENSOR
18-004	NSP0011848	TOP COVER
18-005	NSP0012289	FILM
21-001	NSADF30E21	RIGHT GUIDE ASSY
21-002	NSP0011834	ROLLER A
21-003	NSP0011835	HINGE
21-004	NSP0011836	LATCH
21-005	NSP0011837	RIGHT GUIDE
21-006	NSP0011838	SPRING TORSION
21-007	NSP0011839	SPRING TORSION
21-008	NSP0011840	SPRING TENSION
22-001	NSADF30E22	LATCH REAR UNIT
22-002	NSP0011844	FLAG SENSORE
22-003	NSP0011845	SPRING TENSION

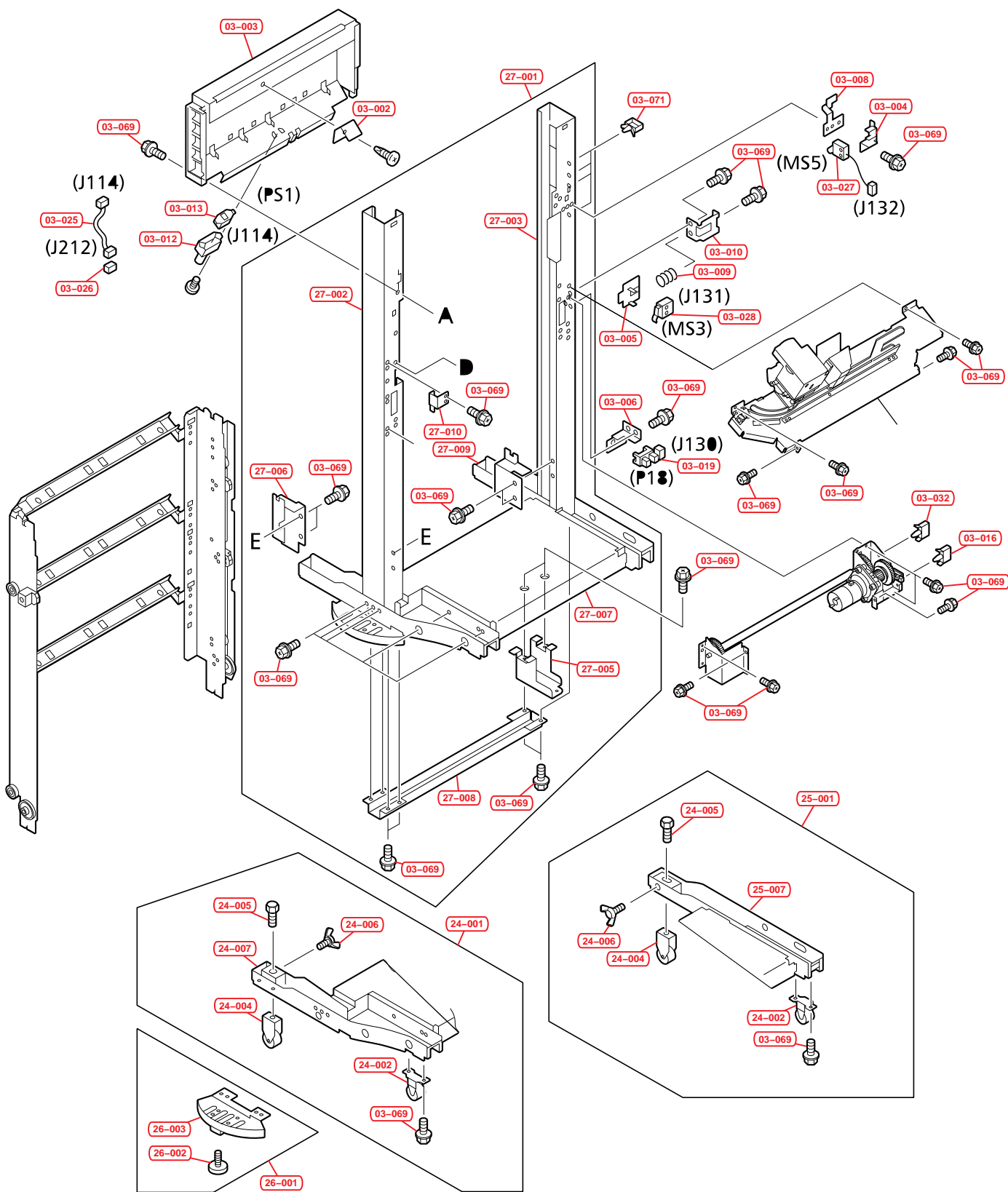


Fig.3a – Sous ensembles – Partie 1

N°	Référence	Description
03-001	NSADF30E03	STAPLER TRAY MAIN BODY 1
03-002	NSP0011854	SPRING LEAF
03-003	NSP0011855	MOUNT SLIDE
03-004	NSP0011856	HOLDER SLIDER
03-005	NSP0011857	HOLDER
03-006	NSP0011858	MOUNT SENSOR
03-008	NSP0011860	SPRING LEAF
03-009	NSP0011861	SPRING COMPRESSION
03-010	NSP0011862	BRACKET
03-012	NSP0011864	DUCT SWENSOR
03-013	NSP0011865	SENSOR
03-016	NSP0011868	CLIP CABLE
03-019	NSP0011824	PHOTO-INTERRUPTER
03-025	NSP0011878	CABLE SENSOR
03-026	NSP0011879	CONNECTOR SNAP TIGHT
03-027	NSP0011880	MICROSWITCH
03-028	NSP0011881	MICROSWITCH
03-032	NSP0011887	PLATE GEAR
03-069	NSP0012287	SCREW RS M4*8*
03-071	NSP0011931	CLIP CABLE
24-001	NSADF30E24	UNIT BOTTOM FRAME FRONT
24-002	NSP0011885	CASTER
24-004	NSP0011936	CASTER
24-005	NSP0011937	BOLT
24-006	NSP0012295	SCREW
24-007	NSP0012301	BOTTOM FLAME FRONT
25-001	NSADF30E25	UNIT BOTTOM FRAME REAR
25-007	NSP0012302	BOTTOM FLAME REAR
26-001	NSADF30E26	UNIT BOTTOM FRAME SUB
26-002	NSP0011934	ADJUSTER
26-003	NSP0011935	FLAME SUB
27-001	NSADF30E27	UNIT FRAME
27-002	NSP0012296	FRONT SUPPORT
27-003	NSP0012297	REAR SUPPORT
27-005	NSP0011886	MOUNT RAIL
27-006	NSP0011932	STOPPER F
27-007	NSP0012298	BOTTOM SUPPORT
27-008	NSP0012299	GUIDE REINFORCEMENT
27-009	NSP0011933	STOPPER R
27-010	NSP0011872	HINGE DOOR

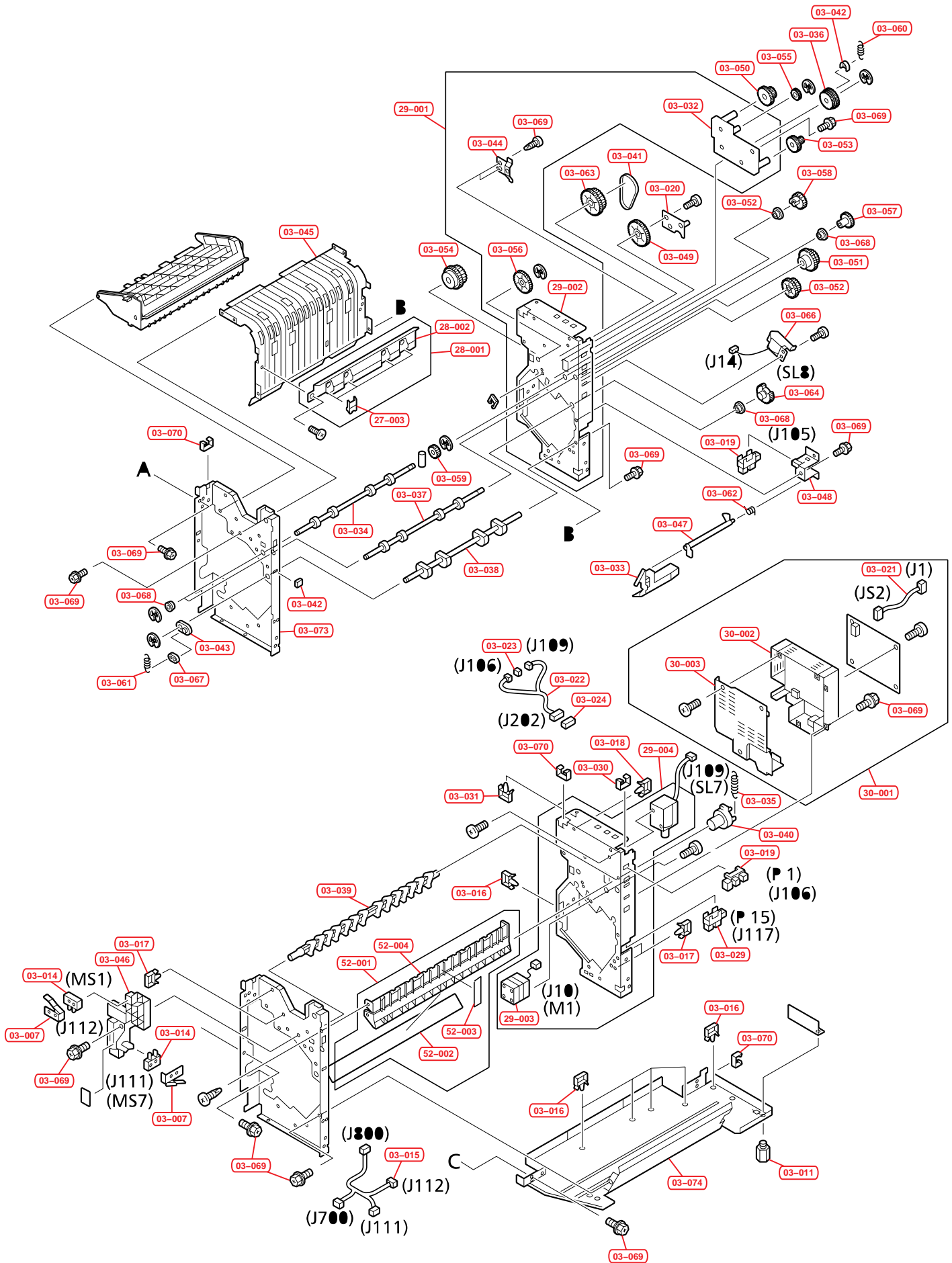


Fig.3b - Sous ensembles - Partie 2

N°	Référence	Description
03-007	NSP0011859	SPRING LEAF
03-011	NSP0011863	SCREW
03-014	NSP0011866	MICROSWITCH
03-015	NSP0011867	CABLE SWITCH
03-016	NSP0011868	CLIP CABLE
03-017	NSP0011869	CLIP CABLE
03-018	NSP0011870	CLAMP
03-019	NSP0011824	PHOTO-INTERRUPTER
03-020	NSP0011873	PLATE SHAFT
03-021	NSP0011874	CABLE POWER
03-022	NSP0011875	CABLE SENSOR
03-023	NSP0011876	CONNECTOR 2P
03-024	NSP0011877	CONNECTOR SNAP TIGHT
03-029	NSP0011824	PHOTO-INTERRUPTER
03-030	NSP0011883	CLIP CABLE
03-031	NSP0011884	CLIP CABLE
03-033	NSP0011888	GUIDE CABLE
03-034	NSP0011889	SHAFT ROLLER PAPER FEED
03-035	NSP0011890	SPRING TENSION
03-036	NSP0011891	GEAR 45T/55T
03-037	NSP0011893	SHAFT ROLLER 1
03-038	NSP0011894	SHAFT ROLLER
03-039	NSP0011895	DEFLECTOR
03-040	NSP0011896	ARM DEFLECTOR
03-041	NSP0011897	BELT TIMING
03-042	NSP0011898	HOOK
03-043	NSP0011899	ARM REVERSE
03-044	NSP0011900	PLATE GROUND
03-045	NSP0011901	GUIDE CENTER
03-046	NSP0011902	COVER SWITCH
03-047	NSP0011903	FLAG SENSOR
03-048	NSP0011904	MOUNT SENSOR
03-049	NSP0011907	GEAR 20T/42T
03-050	NSP0011908	GEAR 24T/36T
03-051	NSP0011909	GEAR 17T/27T
03-052	NSP0011910	GEAT 17T/23T
03-053	NSP0011911	GEAR 16T/36T
03-054	NSP0011912	GEAR 18T/24T
03-055	NSP0011913	GEAR 26T
03-056	NSP0011914	GEAR 28T
03-057	NSP0011915	GEAR 23T
03-058	NSP0011916	GEAR 18T
03-059	NSP0011917	GEAR 20T
03-060	NSP0011918	SPRING TENSION
03-061	NSP0011919	SPRING TENSION

N°	Référence	Description
03-062	NSP0011920	SPRING TENSION
03-063	NSP0011921	GEAR 27T/PULLEY 48T
03-064	NSP0011922	GEAR 30T
03-066	NSP0011925	SOLENOID
03-067	NSP0011927	COLLAR SPRING
03-068	NSP0011928	BUSHING
03-069	NSP0012287	SCREW RS M4*8
03-070	NSP0011930	CLIP CABLE
03-072	NSP0011938	CLIP CABLE
03-073	NSP0011940	FRONT SIDE PLATE
03-074	NSP0012300	CENTER REINFORCEMENT
27-003	NSP0011929	COVER SPRING
28-001	NSADF30E28	UNIT GUIDE REVERSE
28-002	NSP0011924	GUIDE REVERSE
29-001	NSADF30E29	UNIT PLATE REAR
29-002	NSP0011939	REAR SIDE PLATE
29-003	NSP0011923	MOTOR STEPPING DC24V
29-004	NSP0011892	SOLENOID
30-001	NSADF30E30	UNIT POWER
30-002	NSP0011853	SWITCHING REGULATER
30-003	NSP0011926	COVER POWER SUPPLY ASSY
52-001	NSADF30E52	GUIDE PAPER FEED
52-002	NSP0011906	SHEET
52-003	NSP0012294	SHEET
52-004	NSP0011905	STAY GUIDE

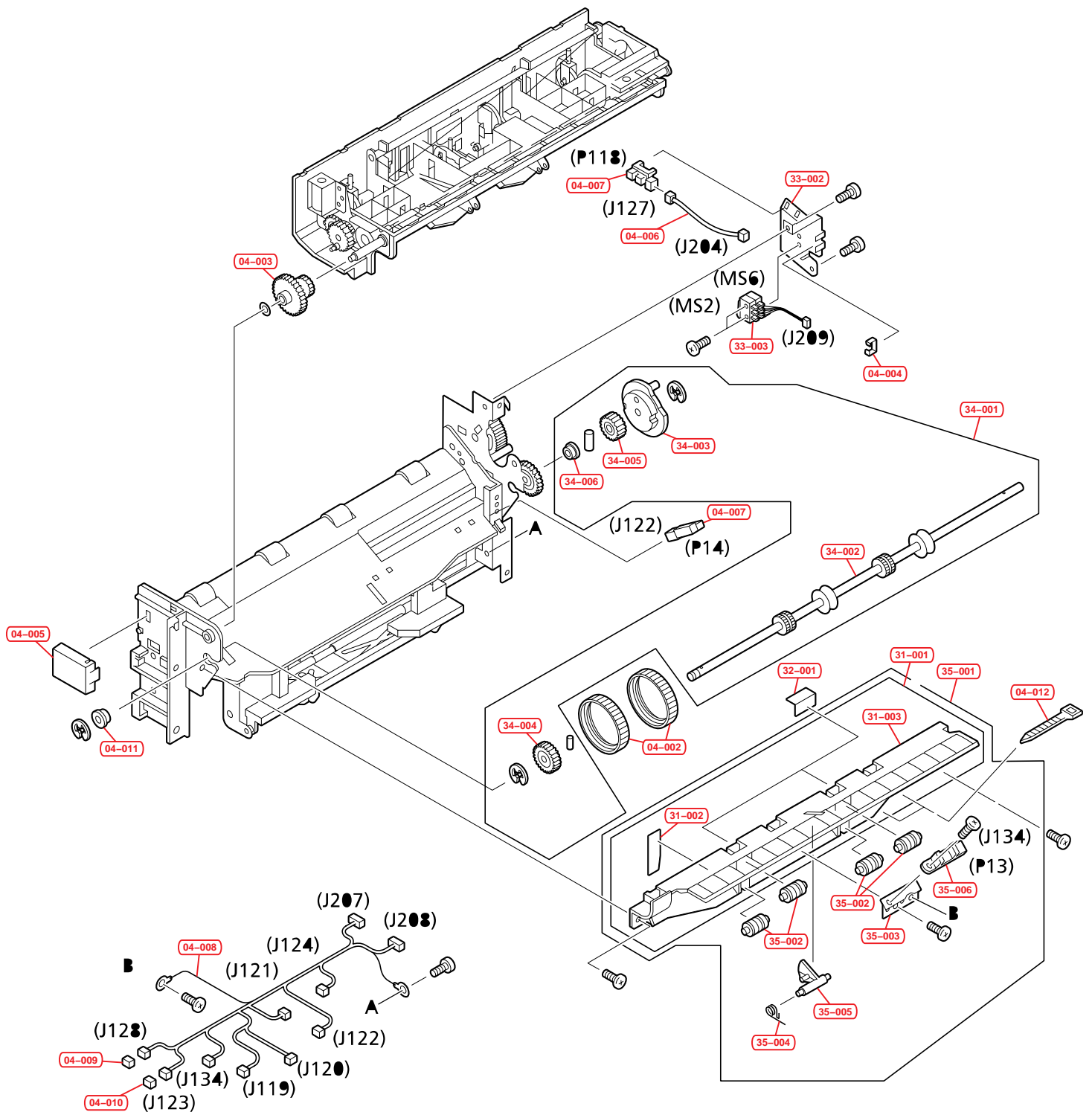


Fig.4 – Sous ensembles – Partie 3

N°	Référence	Description
04-001	NSADF30E04	STAPLER TRAY MAIN BODY 2
04-002	NSP0011942	BELT
04-003	NSP0011943	GEAR 15T/32T
04-004	NSP0011944	CLIP CABLE
04-005	NSP0011945	COVER CABLE
04-006	NSP0011948	CABLE SENSOR
04-007	NSP0011824	PHOTO-INTERRUPTER
04-008	NSP0011962	CABLE SWING UNIT
04-009	NSP0011963	CONNECTOR 2P
04-010	NSP0011964	CONNECTOR 3P
04-011	NSP0011966	BUSHING
04-012	NSP0011967	CLIP CABLE
31-001	NSADF30E01	GUIDE STAPLE
31-002	NSP0011955	SHEET
31-003	NSP0011954	GUIDE STAPLE
32-001	NSADF30E32	GUIDE BELT
32-002	NSP0011968	PLATE GUIDE
32-003	NSP0012290	HOOK GUIDE
33-001	NSADF30E33	MICROSWITCH UNIT
33-002	NSP0011946	PLATE SWING
33-003	NSP0011947	CABLE SENSOR
34-001	NSADF30E34	UNIT ROLLER
34-002	NSP0011956	ROLLER DELIVERY
34-003	NSP0011957	CAM SHUTTER
34-004	NSP0011958	GEAR 22T
34-005	NSP0011959	GEAR 18T
34-006	NSP0011960	BUSHING
35-001	NSADF30E35	UNIT GUIDE STAPLE
35-002	NSP0011941	ROLLER
35-003	NSP0011951	MOUNT SENSOR
35-004	NSP0011953	SPRING TORSION
35-005	NSP0011950	FLAG SENSOR
35-006	NSP0011965	PHOTO-INTERRUPTER

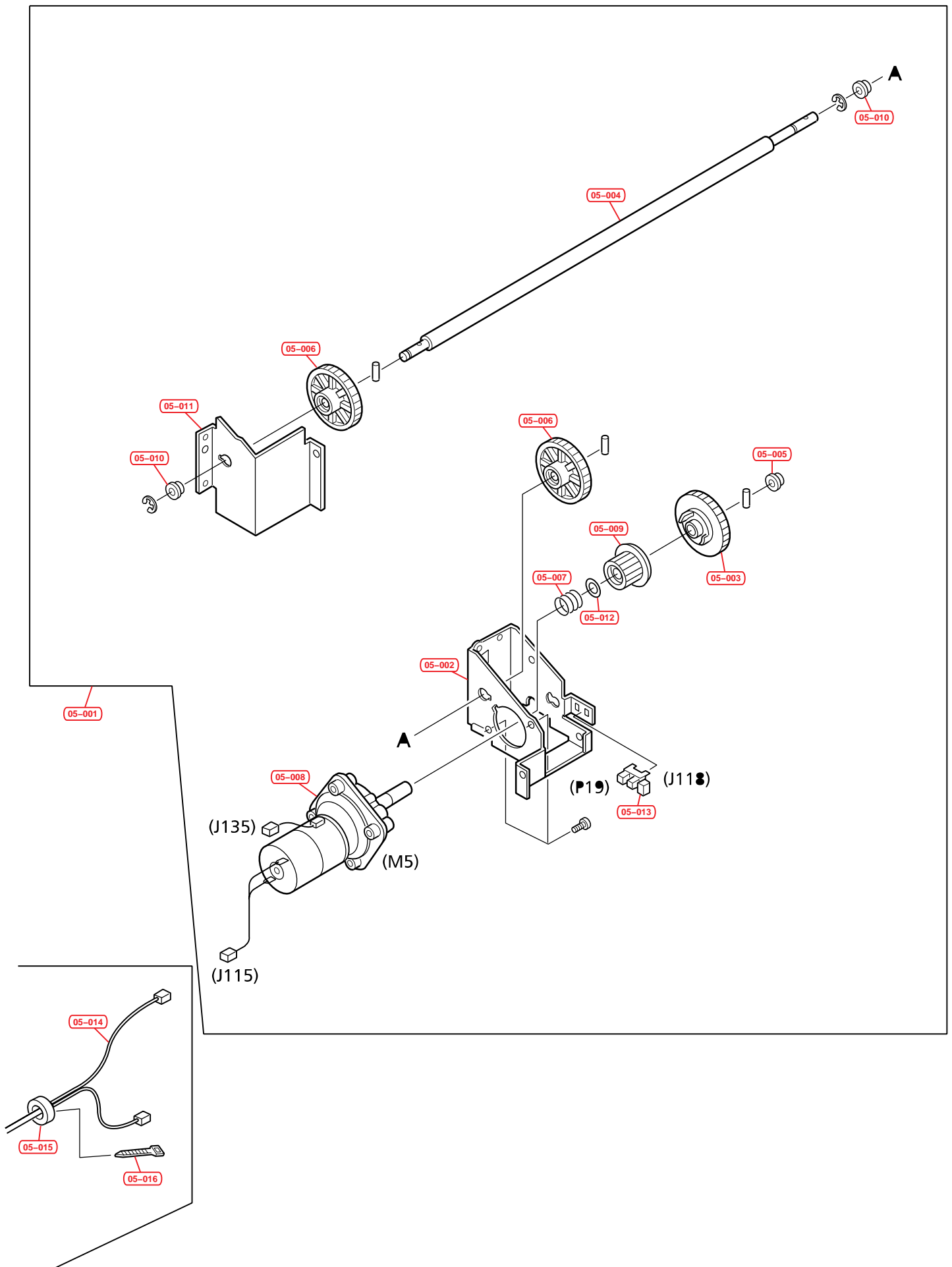


Fig.5 – Ensemble mécanique

N°	Référence	Description
05-001	NSADF30E05	TRAY DRIVE ASSY
05-002	NSP0011969	BRACKET DRIVE
05-003	NSP0011970	CAM
05-004	NSP0011971	SHAFT TRAY
05-005	NSP0011972	BUSHING
05-006	NSP0011973	GEAR 48T
05-007	NSP0011974	SPRING COMPRESSION
05-008	NSP0011975	MOTOR DC24V
05-009	NSP0011976	GEAR 22T
05-010	NSP0011977	BUSHING
05-011	NSP0011978	BRACKET DRIVE SMALL
05-012	NSP0011979	WASHER
05-013	NSP0011980	PHOTO-INTERRUPTER
05-014	NSP0012310	CABLE MAIN
05-015	NSP0012311	FERRITE CORE
05-016	NSP0012312	CLAMP CABLE

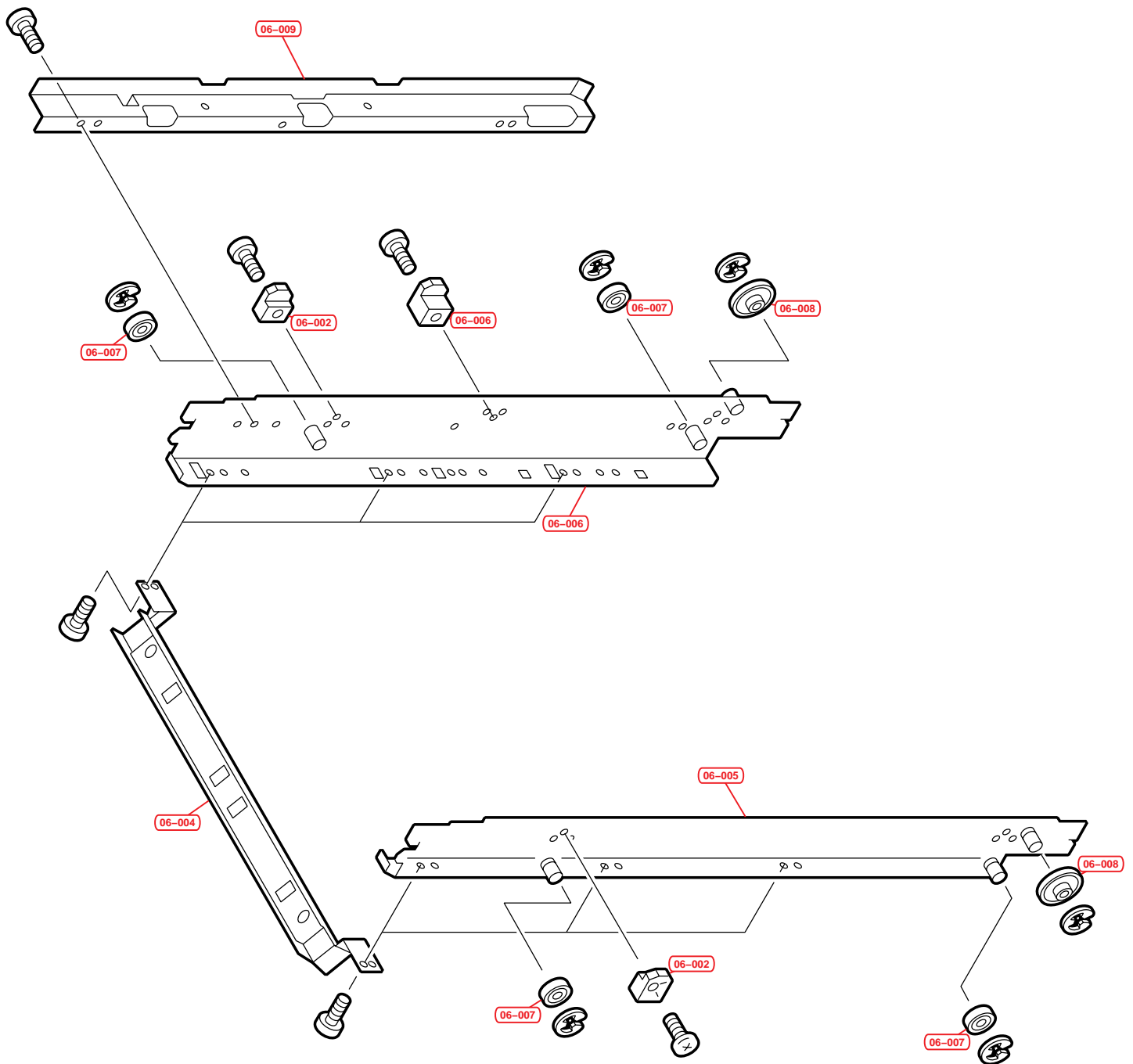


Fig.6 – Support des plateaux

N°	Référence	Description
06-001	NSADF30E06	TRAY ASSY
06-002	NSP0011981	GUIDE SLIDE A
06-003	NSP0011982	GUIDE SLIDE B
06-004	NSP0011983	CROSSMEMBER TRAY
06-005	NSP0011984	FRAME TRAY FRONT
06-006	NSP0011985	FRAME TRAY REAR
06-007	NSP0011986	ROLLER
06-008	NSP0011987	ROLLER
06-009	NSP0011988	PLATE GUIDE

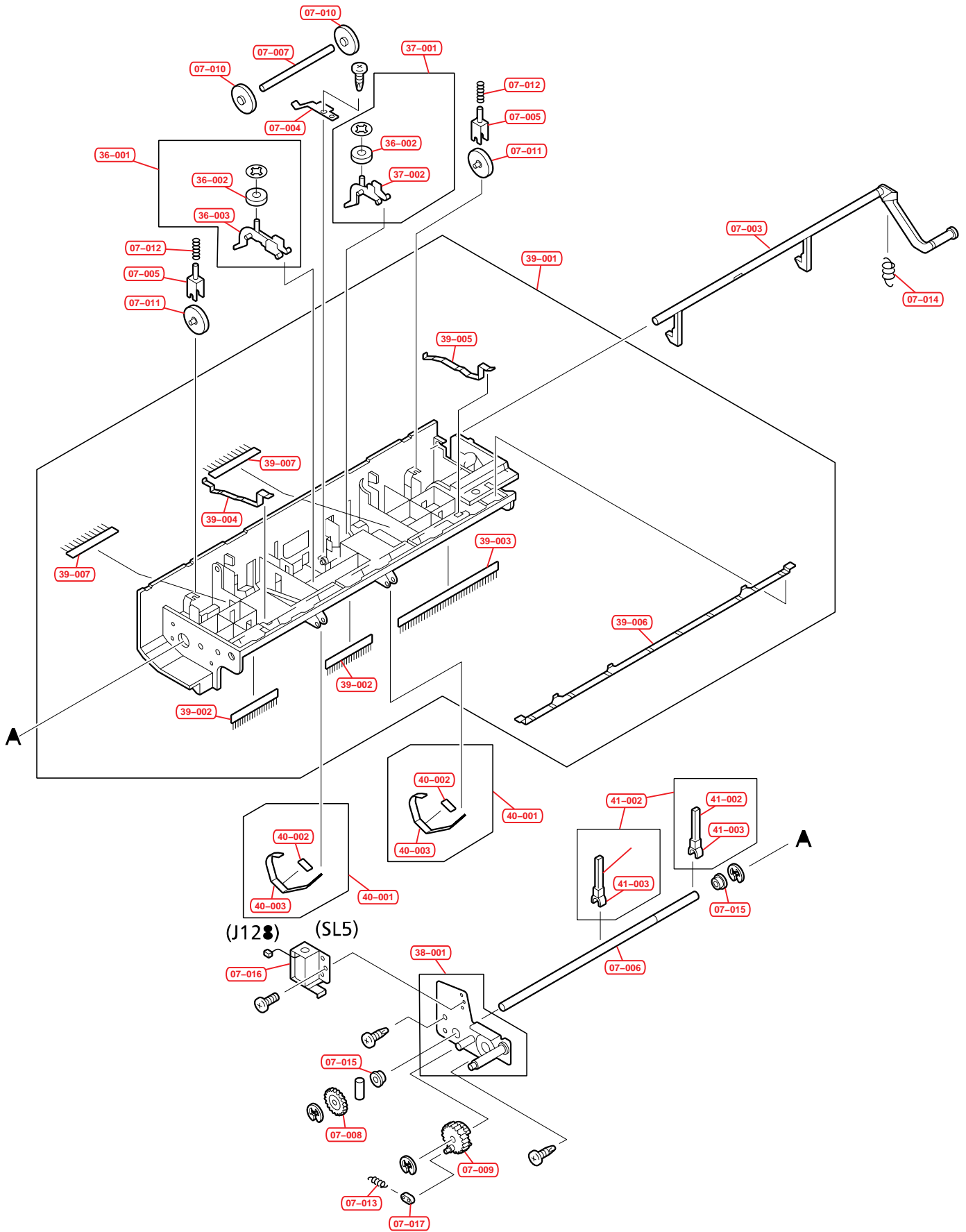


Fig.7 - Guide de décalage

N°	Référence	Description
07-001	NSADF30E07	SWING GUIDE ASSY
07-003	NSP0011990	LEVER SWING
07-004	NSP0011991	SPRING RETAINER
07-005	NSP0011992	HOLDER ROLLER
07-006	NSP0011993	SHAFT
07-007	NSP0011994	SHAFT ROLLER
07-008	NSP0012007	GEAR 21T
07-009	NSP0012008	GEAR 21T
07-010	NSP0012009	ROLLER
07-011	NSP0012010	ROLLER
07-012	NSP0012011	SPRING COMPRESSION
07-013	NSP0012012	SPRING TENSION
07-014	NSP0012013	SPRING TENSION
07-015	NSP0012014	BUSHING
07-016	NSP0012015	SOLENOID
07-017	NSP0012016	COLLAR SPRING
07-018	NSP0012319	SPRING COMPRESSION
36-001	NSADF30E36	ARM STOP FRONT T31
36-002	NSP0012313	WEIGHT
36-003	NSP0011989	ARM FRONT
37-001	NSADF30E37	ARM STOP REAR
37-002	NSP0011995	ARM REAR
38-001	NSADF30E38	PLATE DRIVE
38-002	NSP0011996	GEAR PLATE
38-003	NSP0012314	GEAR
38-004	NSP0012315	SHAFT 1
38-005	NSP0012316	SHAFT 2
38-006	NSP0012317	SHAFT 3
39-001	NSADF30E39	GUIDE SWING
39-002	NSP0011998	ELIMINATOR STATIC CHARGE A
39-003	NSP0011999	ELIMINATOR STATIC CHARGE B
39-004	NSP0012000	PLATE GROUNDING
39-005	NSP0012001	PLATE GROUNDING
39-006	NSP0012002	PLATE GROUNDING
39-007	NSP0012003	ELIMINATOR STATIC CHARGE C
39-008	NSP0011997	SWING GUIDE
40-001	NSADF30E40	PLATE
40-002	NSP0012005	DAMPER SHUTTER
40-003	NSP0012004	DAMPER SHUTTER
41-001	NSADF30E41	SHAFT
41-002	NSP0012006	RUBBER
41-003	NSP0012318	STAND

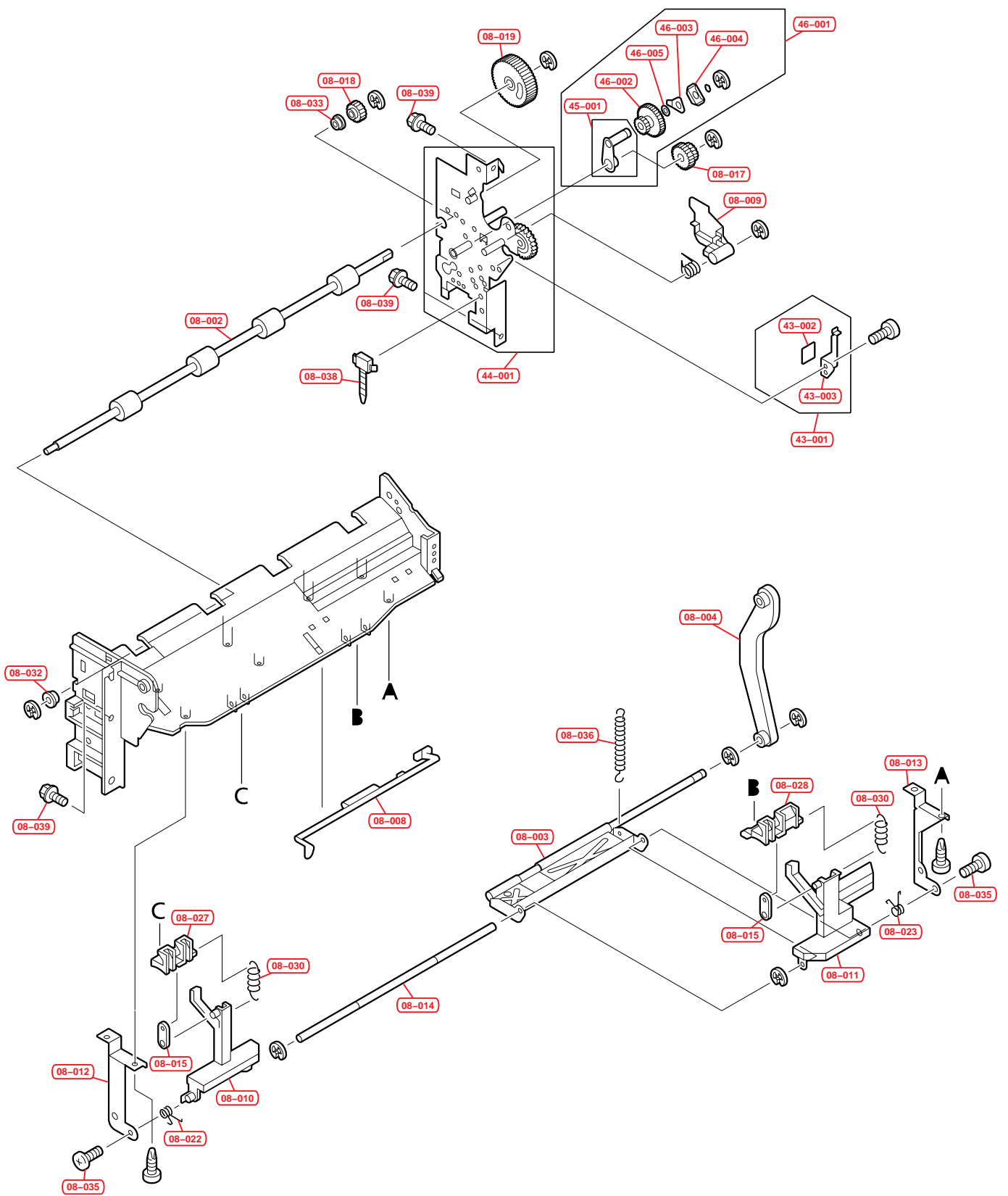


Fig.8a – Support de l'agrafeuse – Partie 1

N°	Référence	Description
08-001	NSADF30E08	STAPLER TRAY ASSY
08-002	NSP0012017	SHAFT DELIVERY ROLLER
08-003	NSP0012018	LINK SHUTTER A
08-004	NSP0012019	LINK SHUTTER B
08-008	NSP0012023	LEVER SENSOR
08-009	NSP0012024	PLATE GEAR
08-010	NSP0012025	LEVER STOP FRONT
08-011	NSP0012026	LEVER STOP REAR
08-012	NSP0012027	PLATE SUPPORT FRONT
08-013	NSP0012028	PLATE SUPPORT REAR
08-014	NSP0012029	CROSSBAR STOP
08-015	NSP0012030	LINK
08-017	NSP0012035	GEAR 15T/23T
08-018	NSP0012037	GEAR 15T
08-019	NSP0012038	GEAR 50T
08-022	NSP0012041	SPRING TORSION
08-023	NSP0012042	SPRING TORSION
08-027	NSP0012049	STOP FRONT
08-028	NSP0012050	STOP REAR
08-030	NSP0012052	SPRING TENSION
08-032	NSP0012060	BUSHING
08-033	NSP0012061	BUSHING
08-035	NSP0012063	SCREW
08-036	NSP0012064	SPRING
08-038	NSP0012067	CLIP CABLE
08-039	NSP0012287	SCREW RS M4*8
43-001	NSADF30E43	SPRING LEAF
43-002	NSP0012054	RUBBER
43-003	NSP0012053	SPRING LEAF
44-001	NSADF30E44	PLATE
44-003	NSP0012324	PLATE STOPPER
44-004	NSP0012325	GEAR5
44-005	NSP0012326	GEAR7
44-006	NSP0012327	GEAR2
44-007	NSP0012328	SHAFT2
44-008	NSP0012329	SHAFT5
44-009	NSP0012330	SHAFT6
44-010	NSP0012331	SHAFT7
44-011	NSP0012332	SHAFT55
44-012	NSP0012277	SWING SHAFT GS
44-013	NSP0012278	SHAFT3
45-001	NSADF30E45	LEVER SWING
45-002	NSP0012034	LEVER SWING
45-003	NSP0012320	BOSS PLATE SWING
45-004	NSP0012321	SHAFT

N°	Référence	Description
46-001	NSADF30E46	UNIT LEVER SWING
46-002	NSP0012036	GEAR 15T/34T
46-003	NSP0012031	WASHER
46-004	NSP0012033	SPRING LEAF
46-005	NSP0012065	SLIDER

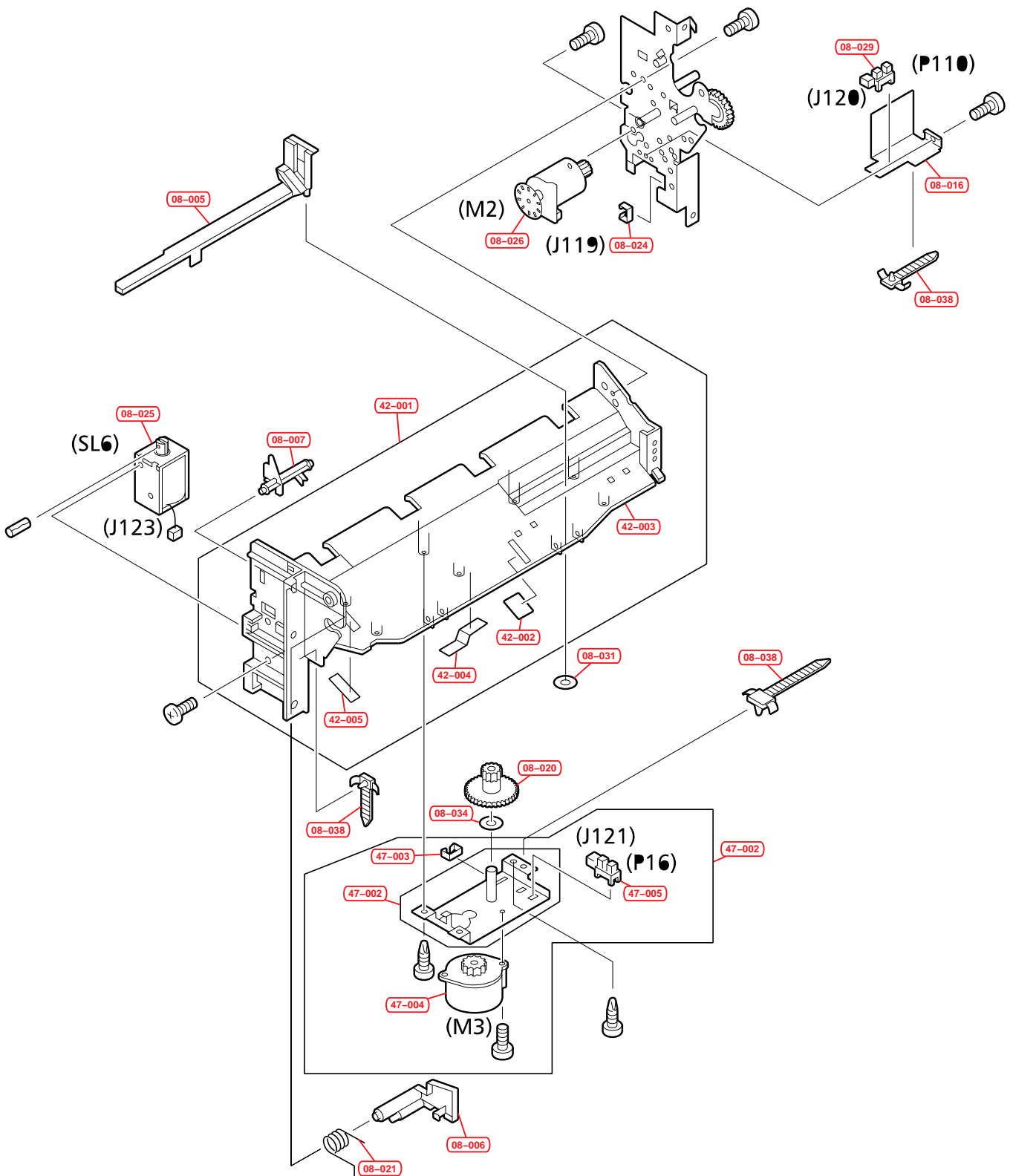


Fig.8b – Support de l'agrafeuse – Partie 2

N°	Référence	Description
08-005	NSP0012020	PLATE
08-006	NSP0012021	SHUTTER
08-007	NSP0012022	LEVER SHUTTER
08-016	NSP0012032	MOUNT SENSOR
08-020	NSP0012039	GEAR 12T/36T
08-021	NSP0012040	SPRING TORSION
08-024	NSP0012046	CLIP CABLE
08-025	NSP0012047	SOLENOID
08-026	NSP0012048	MOTOR DC24V
08-029	NSP0012051	PHOTO-INTERRUPTER
08-031	NSP0012059	RING RETAINING
08-034	NSP0012062	WASHER
08-038	NSP0012067	CLIP CABLE
08-040	NSP0012066	PLATE TRAY REAR
42-001	NSADF30E42	TRAY STAPLER
42-002	NSP0012044	SEAL
42-003	NSP0012043	STAPLER TRAY
42-004	NSP0012322	PLATE HOLD
42-005	NSP0012323	RUBBER
47-001	NSADF30E47	UNIT MOUNT MOTOR
47-002	NSP0012055	MOUNT MOTOR
47-003	NSP0012056	CLIP CABLE
47-004	NSP0012057	MOTOR STEPPING
47-005	NSP0011824	PHOTO-INTERRUPTER

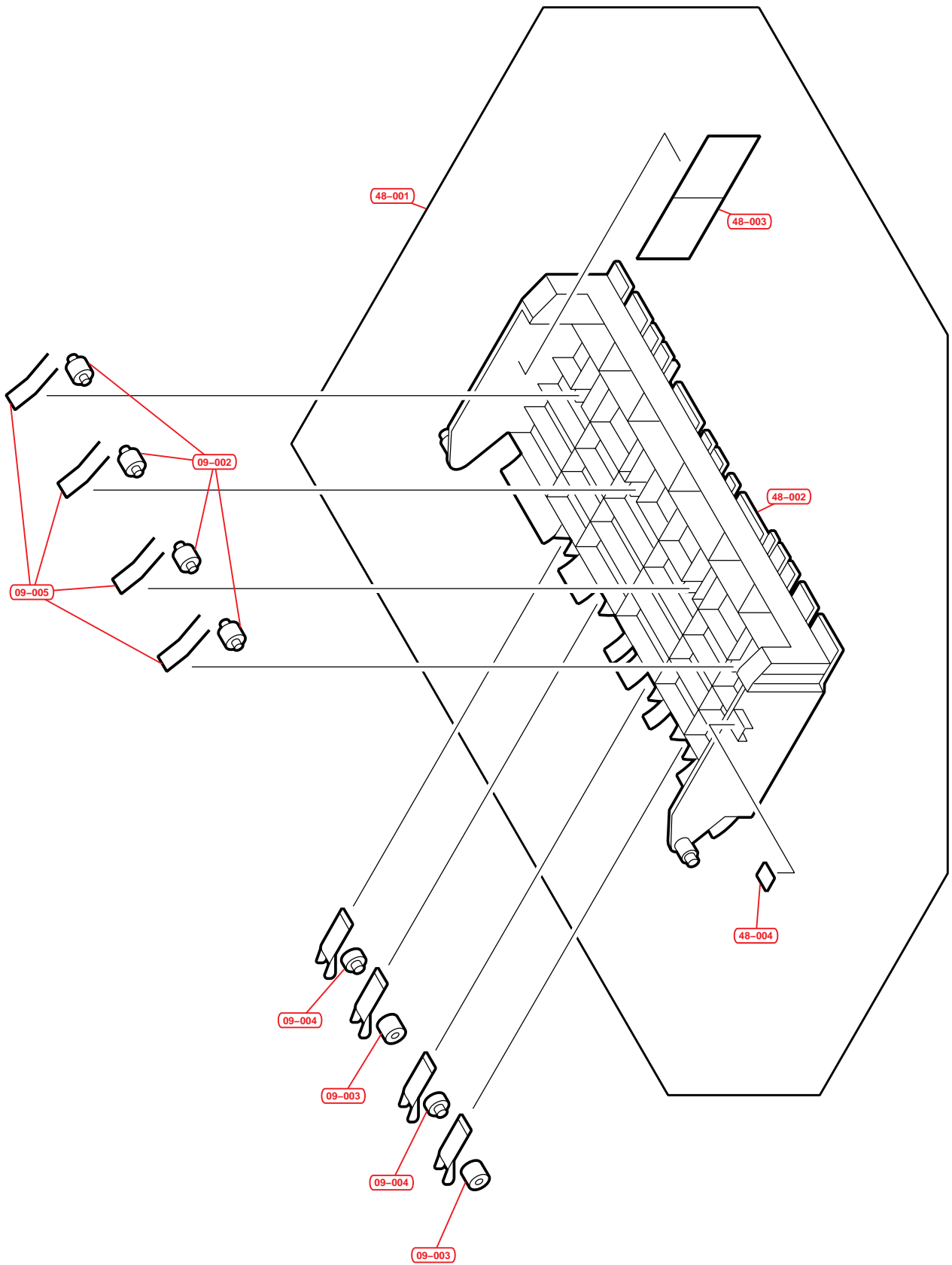


Fig.9 – Sortie papier supérieure

N°	Référence	Description
09-001	NSADF30E09	UPPER FEEDER ASSY
09-002	NSP0012068	ROLLER A
09-003	NSP0012069	ROLLER B
09-004	NSP0012070	ROLLER C
09-005	NSP0012071	SPRING TORSION
09-006	NSP0012075	SPRING ROLLER HOLDER
48-001	NSADF30E48	GUIDE UPPER
48-002	NSP0012072	GUIDE UPPER
48-003	NSP0012073	LABEL OPEERATION
48-004	NSP0012074	LABEL 1

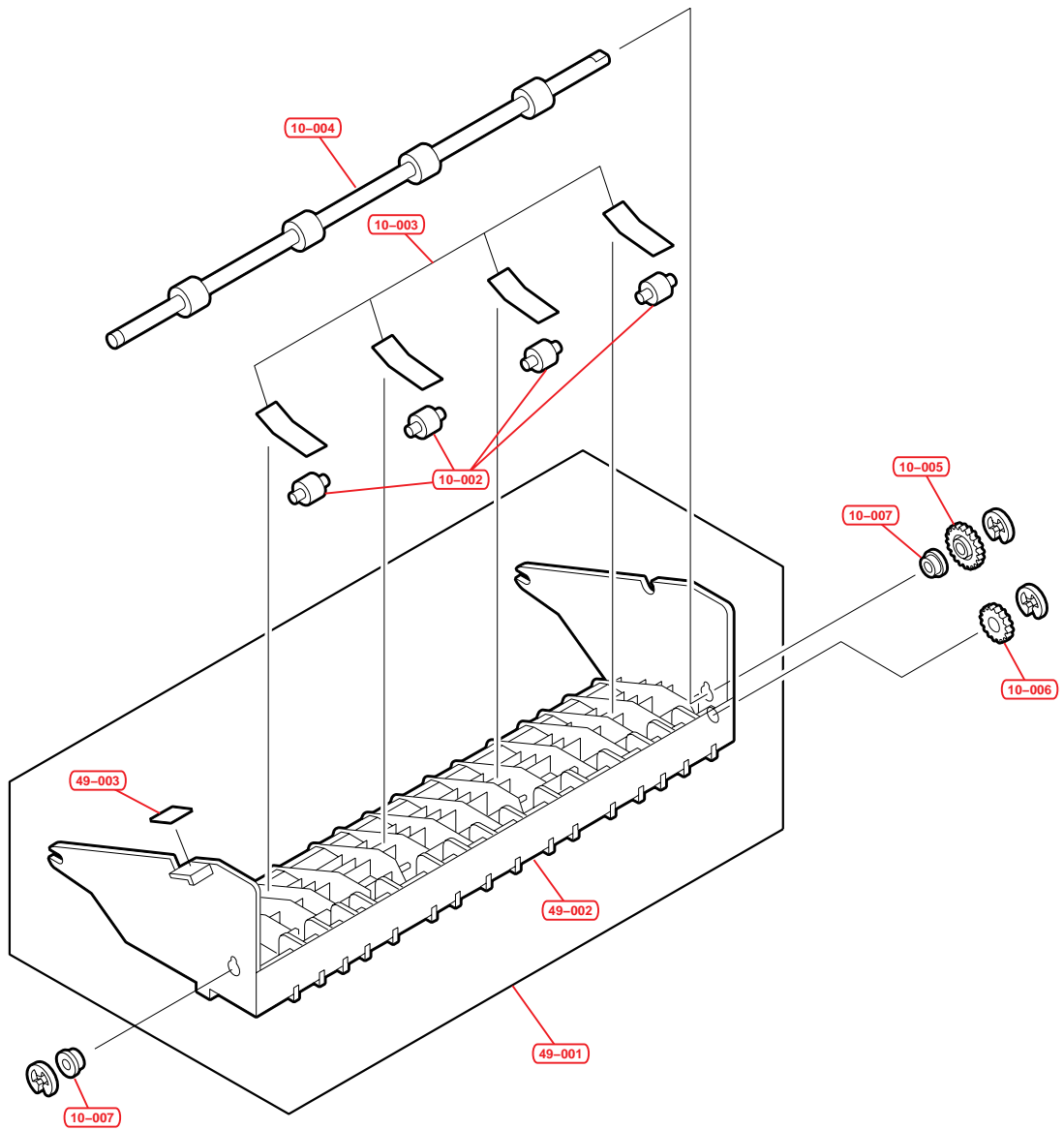


Fig.10 – Guide de centrage

N°	Référence	Description
10-001	NSADF30E10	CENTER GUIDE ASSY
10-002	NSP0012068	ROLLER A
10-003	NSP0012071	SPRING TORSION
10-004	NSP0012079	SHAFT STAPLER ROLLER
10-005	NSP0012080	GEAR 20T
10-006	NSP0012081	GEAR 16T
10-007	NSP0012082	BUSHING
49-001	NSADF30E49	GUIDE CENTER
49-002	NSP0012076	GUIDE CENTER
49-003	NSP0012077	LABEL 2

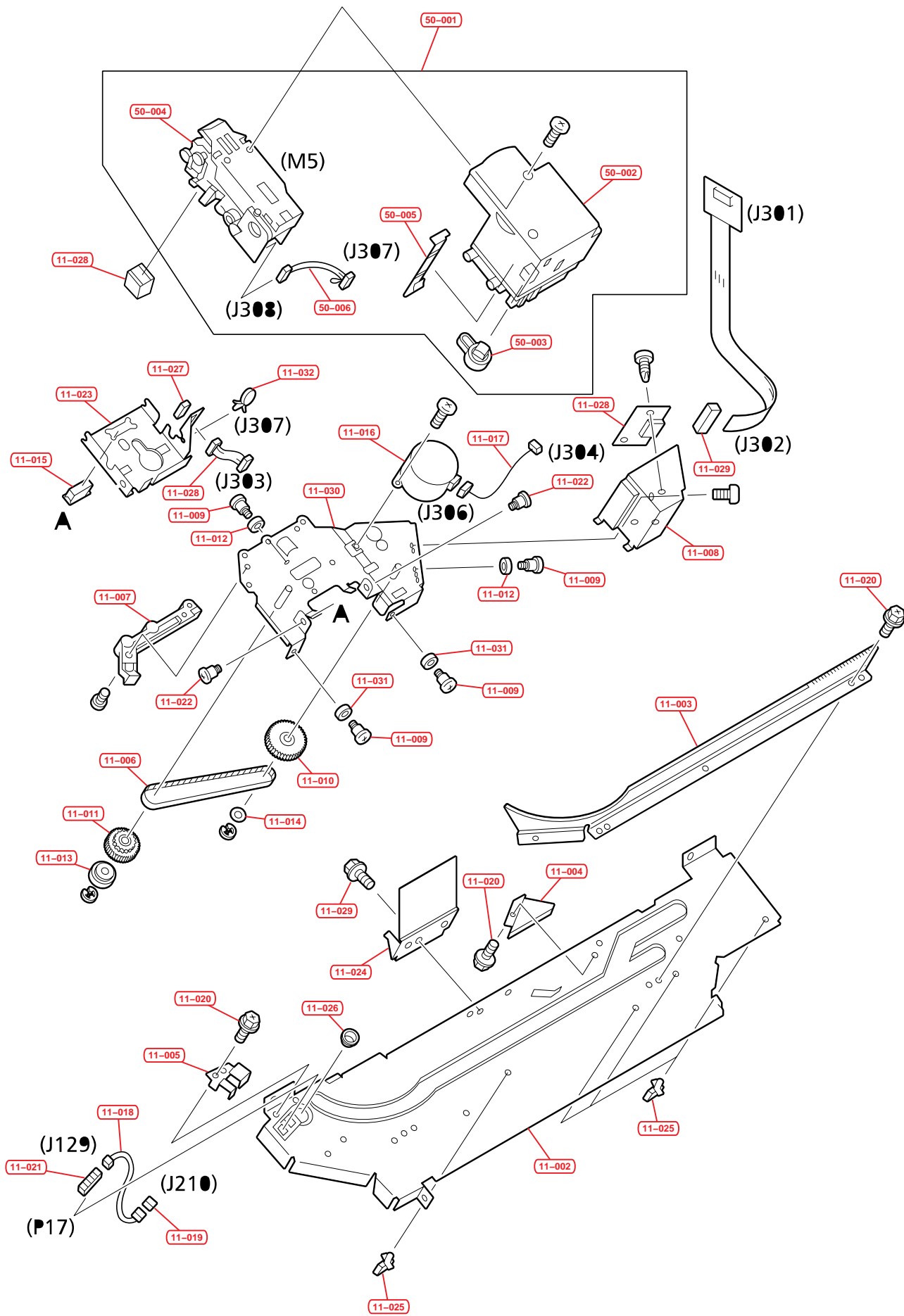


Fig.11 – Agrafeuse*,,

N°	Référence	Description
11-001	NSADF30E11	STAPLER ASSY
11-002	NSP0012083	GUIDE STAPLER
11-003	NSP0012084	PLATE RACK
11-004	NSP0012085	PLATE GUIDE
11-005	NSP0012086	COVER SENSOR
11-006	NSP0012087	BELT TIMING
11-007	NSP0012088	CAM STOP
11-008	NSP0012089	COVER PCB
11-009	NSP0012090	SCREW STEPPED M3
11-010	NSP0012091	GEAR 44T/PULLEY 16T
11-011	NSP0012092	GEAR 16T/PULLEY 40T
11-012	NSP0012093	ROLLER
11-013	NSP0012094	ROLLER
11-014	NSP0012095	FLANGE PULLEY
11-015	NSP0012096	CATCH MAGNET
11-016	NSP0012097	MOTOR STEPPING
11-017	NSP0012098	CABLE STAPLER
11-018	NSP0012099	CABLE STAPLER
11-019	NSP0012100	CONNECTOR 3P
11-020	NSP0011952	SCREW RS M3*6
11-021	NSP0011824	PHOTO-INTERRUPTER
11-022	NSP0012102	TWO-STEP SCREW M3
11-023	NSP0012103	MOUNT STAPLER
11-024	NSP0012104	BRACKET STAPLER
11-025	NSP0012105	CLAMP CABLE
11-026	NSP0012106	GROMMET CORD
11-027	NSP0012107	CONNECTOR 9P
11-028	NSP0012109	CONNECTOR PWB ASSY
11-029	NSP0012287	SCREW
11-030	NSP0012114	MOUNT
11-031	NSP0012115	ROLLER
11-032	NSP0012116	CLAMP CABLE
50-001	NSADF30E50	UNIT STAPLER
50-002	NSP0012110	COVER STAPLER
50-003	NSP0012111	LEVER LOCK
50-004	NSP0012112	STAPLER
50-005	NSP0012113	PLATE GROUNDING
50-006	NSP0012108	CABLE STAPLER 2
50-007	NSP0012280	CATRIDGE STAPLE

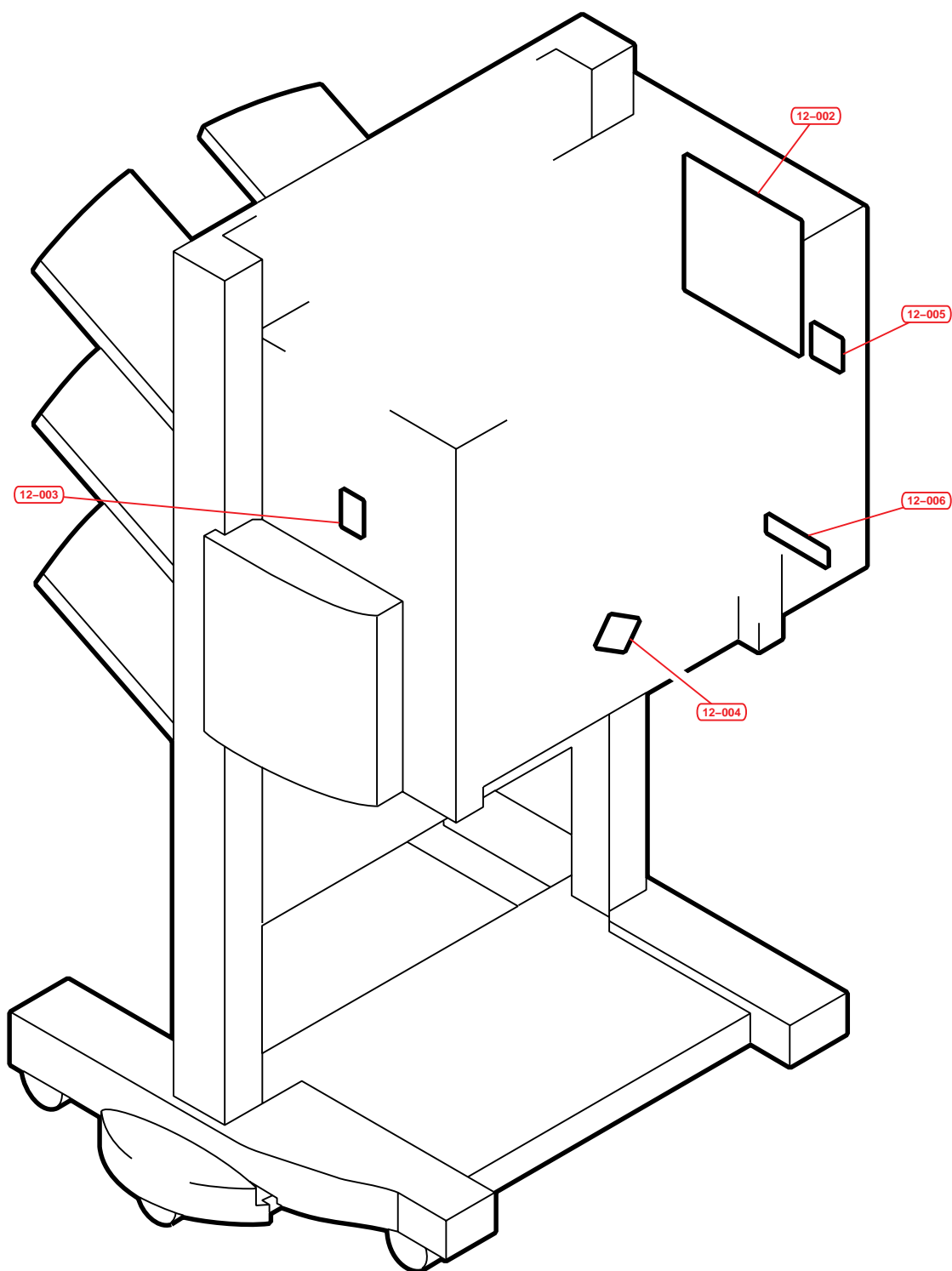


Fig.12 – Position des cartes électroniques

N°	Référence	Description
12-001	NSADF30E12	PCB ASSEMBLY LOCATION DIAGRAM
12-002	NSP0012117	FINISHER DRIVER PCB ASSY
12-003	NSP0012118	SWITCH PWB ASSY
12-004	NSP0012119	CONNECTOR PCB ASSY
12-005	NSP0012120	CONNECTOR PCB ASSY
12-006	NSP0012078	INTERFACE PCB ASSY