



**OPTIONS IMPRIMANTES**

**PF-1**

# **NOMENCLATURE**

**02-12-1998**

# PF-1 Pièces détachées

## Table des matières

Final Assembly (Fig.1) .....	3
Feeder Main Mechanism Assembly (Fig.2).....	5
Feeder Assembly (Fig.3) .....	7
Electronics assembly,, (Fig.4).....	9
Legal kit packaging (Fig.5) .....	11

## Introduction

Les figures qui suivent représentent l'assemblage de l'imprimante ou des options, par sous-ensembles.

Les informations suivantes sont indiquées après chaque pièce :

N° .....	N° de la pièce dans l'éclaté
Référence.....	Référence de la pièce
Description .....	Description de la pièce ( en anglais )

Seules les pièces en caractères GRAS peuvent être commandées.

Toutes les autres pièces sont mentionnées à titre indicatif et ne sont pas disponibles.

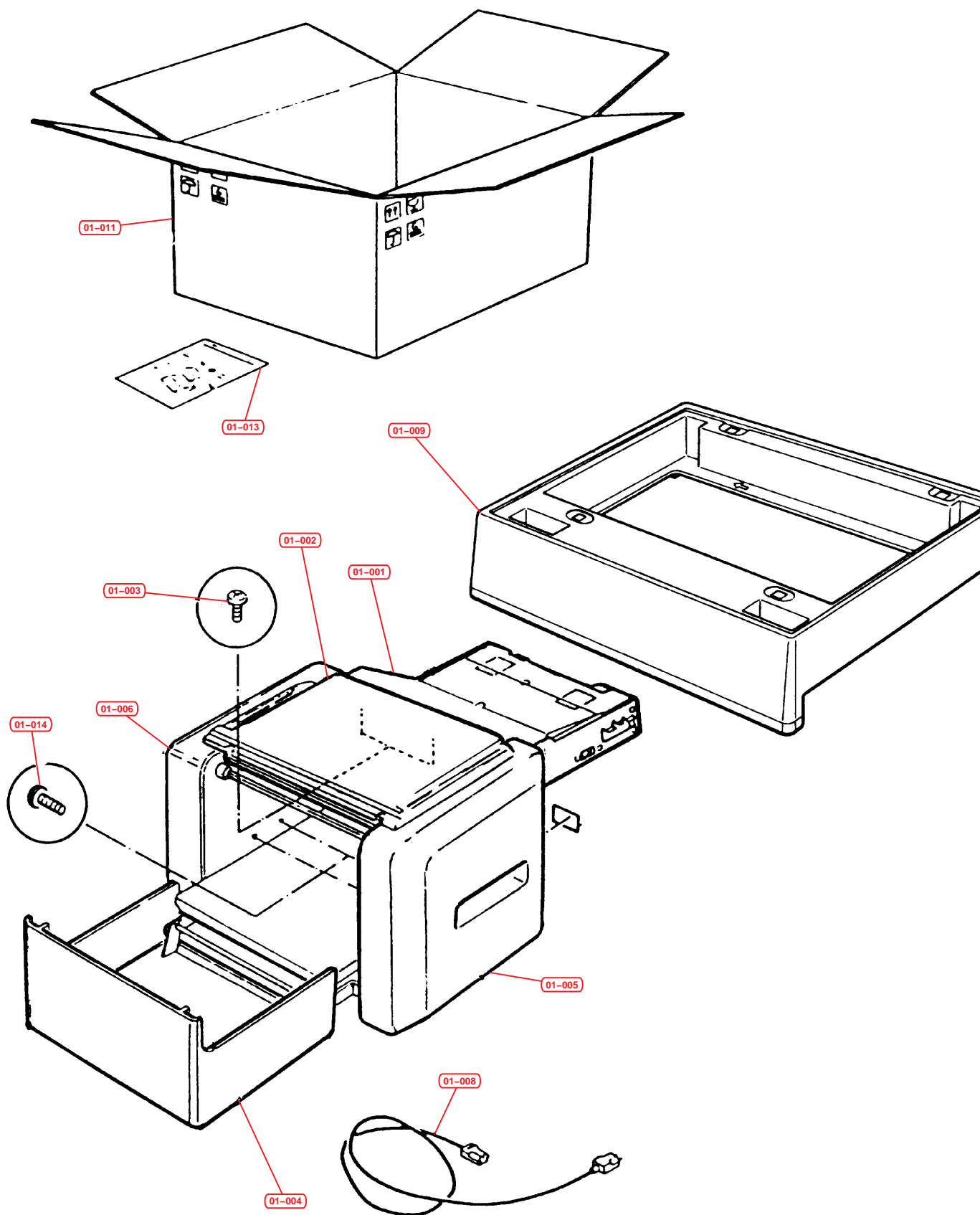


Fig.1 - Final Assembly

<b>N°</b>	<b>Référence</b>	<b>Description</b>
01-000	PF-1	PAPER FEEDER ASSY
01-001		FEEDER ASSY HCF-IKYO 115V
01-001		FEEDER ASSY HCF-IXYO 230V
01-002	P24BPF1001	COVER TOP A85
01-003	P24BPF1002	SCREW WASHERED M3 X .5 PPH
01-004	P24BPF1003	REAR TACK COVER
01-005	P24BPF1004	SIDE COVER
01-006	P24BPF1005	SIDE COVER ASSY-FRONT
01-008	P24BPF1006	JUMPER CORD
01-009	P24BPF1007	ASSY-PEDESTAL
01-010	P24BPF1008	DOCUMENT PACKAGING
01-011	P24BPF1011	PACKAGING HCF
01-013	P24BPF1012	INSTRUCTIONS UNPACK KYO HCF
01-014	BTPP4012W8	SCREW M4 SELF-THREADING

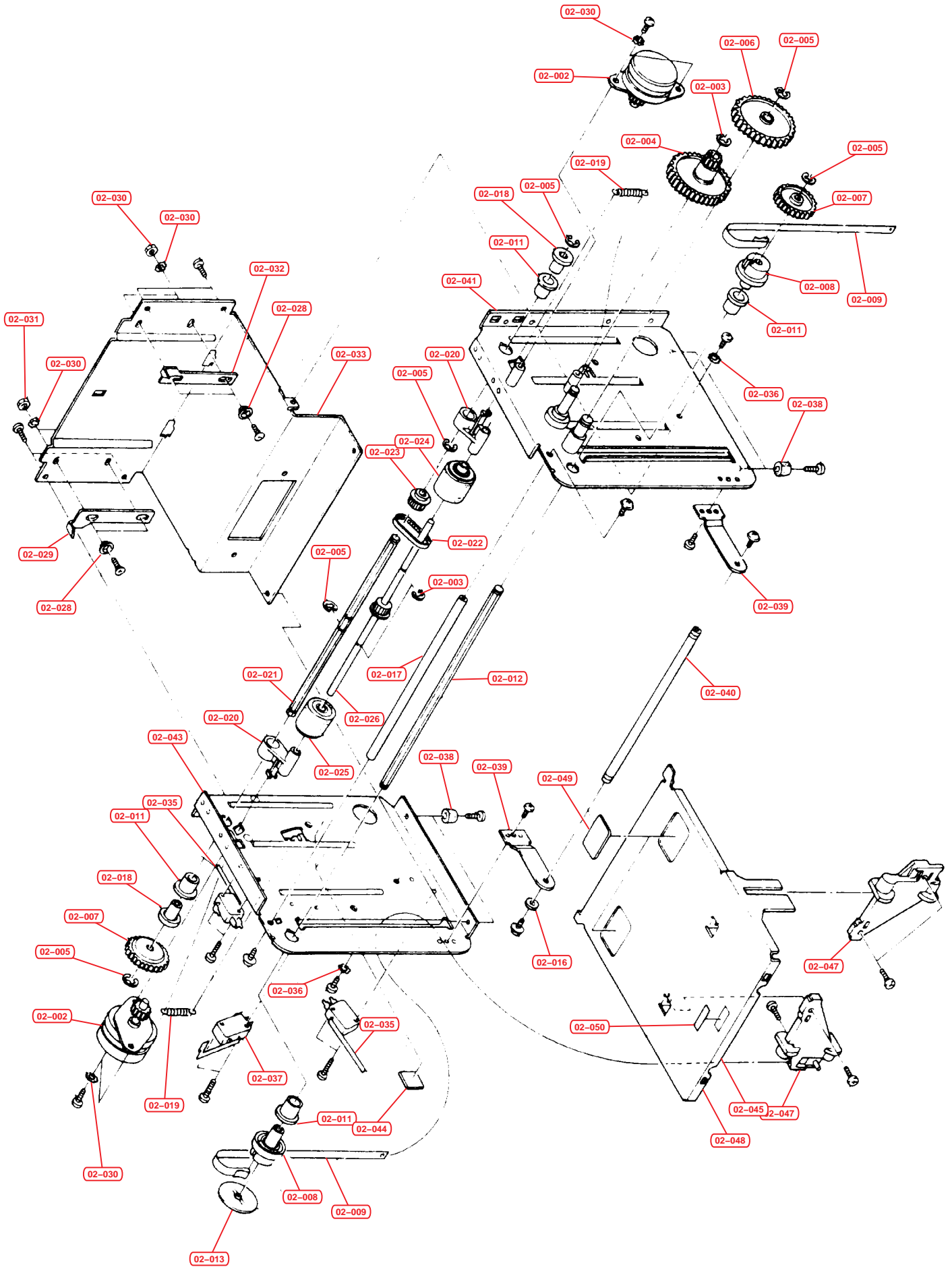


Fig.2 - Feeder Main Mechanism Assembly

<b>N°</b>	<b>Référence</b>	<b>Description</b>
02-002	P24BPF1031	ASSY-MOTOR HCF
02-003	BCE4060XSW	RING RETAINING
02-004	P24BPF103Z	GEAR CLUSTER #2
02-005	BCE5090XSW	RING RETAINING
02-006	P24BPF1033	GEAR CLUSTER #1
02-007	P24BPF1034	GEAR ELEVATOR SHAFT
02-008	P24BPF1035	HUB ELEV. SHAFT
02-009	P24BPF1036	FLT. 3LT. ELEV. SHAFT
02-011	P24BPF1037	BUSHING OUTER RACE
02-012	P24BPF1038	ELEV. SHAFT
02-013	P24BPF1039	BELT RETAINER
02-016	B2K30605SZ	FLAT WASHER
02-017	P24BPF1041	REAR CROSS BAR
02-018	P24BPF1042	BUSHING ED SHFT
02-019	P24BPF1043	SPRING FEED SHAFT
02-020	P24BPF1044	LINK PIVOT
02-021	P24BPF1045	POWER SHAFT
02-022	P24BPF1046	TIMING BELT
02-023	P24BPF1047	POWER PULLEY
02-024	P24BPF1048	ASSY-FEED ROLLER L.H
02-025	P24BPF1049	ASSY-FEED ROLLER R.H
02-026	P24BPF1050	ASSY-FEED SHAFT
02-028	P24BPF1051	SEPARATOR RETAINER
02-029	P24BPF1052	SEPARATOR L/H
02-030	BWG306545Z	LOCK WASHER STAR
02-031	BNHAH30NSZ	NUT M3
02-032	P24BPF1053	SEPARATOR R/H
02-033	P24BPF1054	HOPPER WALL
02-035	P24BPF1055	SWITCH CHERRY
02-036	BWU306545P	WASHER LOCK INTERNAL
02-037	P24BPF1056	MICROSWITCH (MOD)
02-038	P24BPF1057	MOUNTING PAD
02-039	P24BPF1059	REAR CVR. PVT. PLT.
02-040	P24BPF1060	R. STACK COV. PIVOT SHAFT
02-041	P24BPF1041	SIDE PLATE ASSY ELEVATOR SIDE
02-043	P24BPF1062	SIDE PLATE ASSY. FEED SIDE
02-044	P24BPF1059	MOUNT CABLE TIE
02-045	P24BPF1063	ELEVATOR TRAY ASSY
02-047	P24BPF1064	TRAY GUIDE
02-048	P248PF1065	TRAY ELEVATOR
02-049	P24BPF1066	ANTI-SKID PAD
02-050		LABEL INSTALLATION

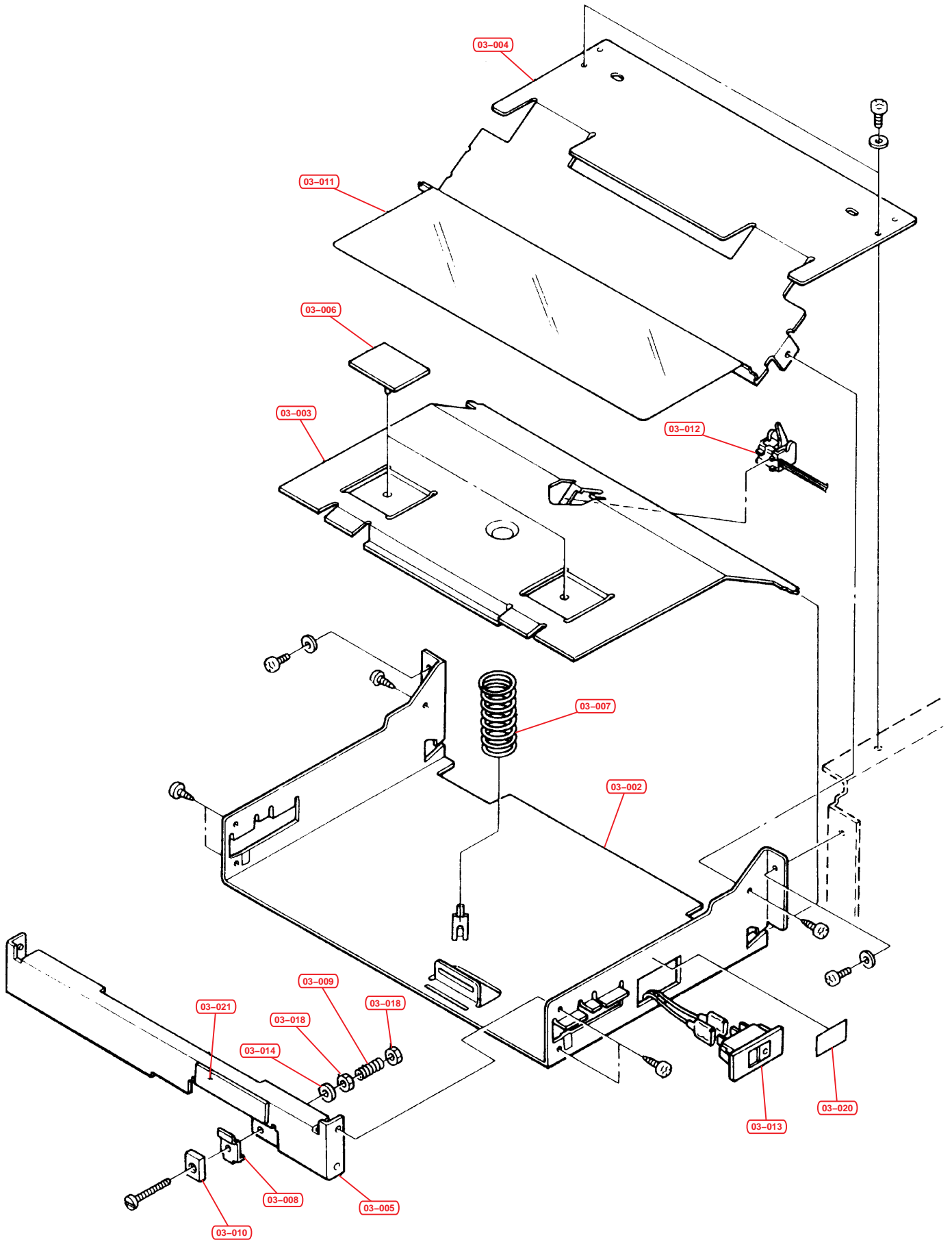


Fig.3 – Feeder Assembly

<b>N°</b>	<b>Référence</b>	<b>Description</b>
03-002	P24BPF1018	LOWER STRUCTURE
03-003	P24BPF1019	TRAY PIVOT
03-004	P24BPF1020	TOP STRUCTURE
03-005	P24BPF1021	FRONT STRUCTURE
03-006	P24BPF1022	ROLLER PAD
03-007	P24BPF1023	LOAD SPRING
03-008	P24BPF1024	HOLDER MAGNET
03-009	P24BPF1025	DETENT SPRING
03-010	P24BPF1026	MAGNET
03-011	P24BPF1028	PAPER GUIDE
03-012	P24BPF1027	HARNESS SWITCH
03-013	P24BPF1029	SWITCH PRINTER SELECT
03-014	P24BPF1030	WASHER FLAT NYLON M2.
03-018	BNHBH25NSZ	NUT MEX M2.5
03-020		LABEL UNIT CONFIGURATION
03-021		LABEL SHEET SIZE



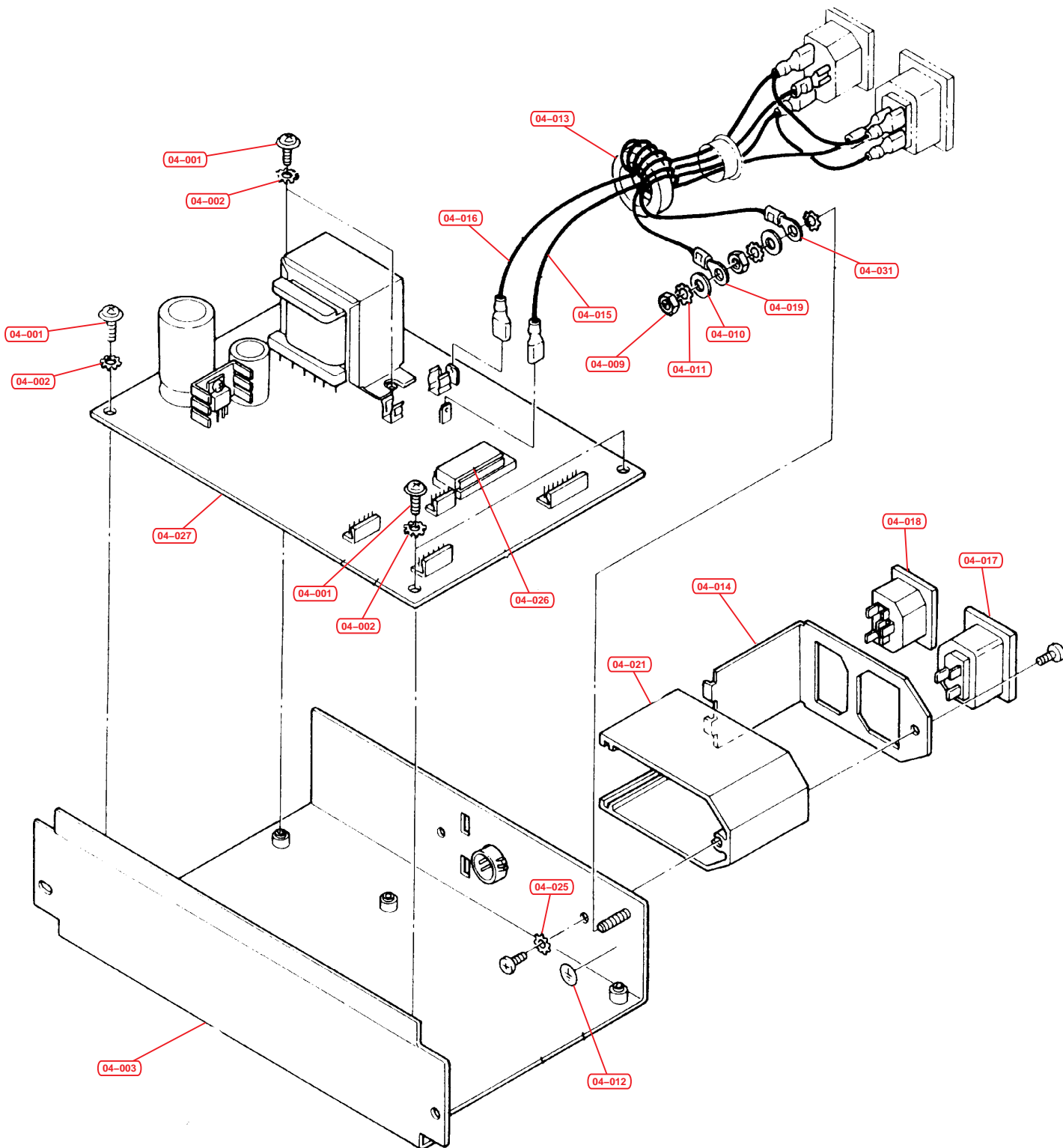


Fig.4 - Electronics assembly,,

<b>N°</b>	<b>Référence</b>	<b>Description</b>	
04-000	P24BPFIE003	ASSY-ELECTRONICS KYO 230V	
04-001	BWU30654SP	WASHER LOCK INTERNAL	
04-002	P24BPF1070	ASSY-ELECTRONIC TRAY (WIRED)	
04-003	P24BPF1073	ELECTRONIC TRAY W/ STANDOFFS	
04-009	BNHAA40NSZ	NUT M4	
04-010	BWR40808SZ	WASHER FLAT M4	
04-011	BWB40854SP	LOCK WASHER INT. M4	
04-012		LABELGROUND	
04-013		BEAD SHIELD	
04-014		IEC SUB-ASSY (AC RECEPTICLE)	
04-015	P24BPF1074	AC HARNESS (LINE)	
04-016	P24BPF1075	AC HARNESS (NEUTRAL)	
04-017	P24BPF1071	CONN. IEC (FEMALE)	
04-018	P24BPF1072	CONN. IEC (MALE)	
04-019		AC HARNESS (SAFETY)	
04-021		EXTRUSION IEC RECEPTACLE	
04-025	BWU30654SP	WASHER LOCK INTERNAL	
04-026	P24BPF1069	PROM PROGRAMMED HCF	
04-027	P24BPFIU004	PWB 115V W/PROM	
04-028	P24BPFIE004	PWB 230V W/PROM	1
04-029	P24BPFIU005	PWB SPARE ASSY 115V	
04-030	P24BPFIE005	PWB SPARE ASSY 230V	
04-031		HARNESS SAFETY	

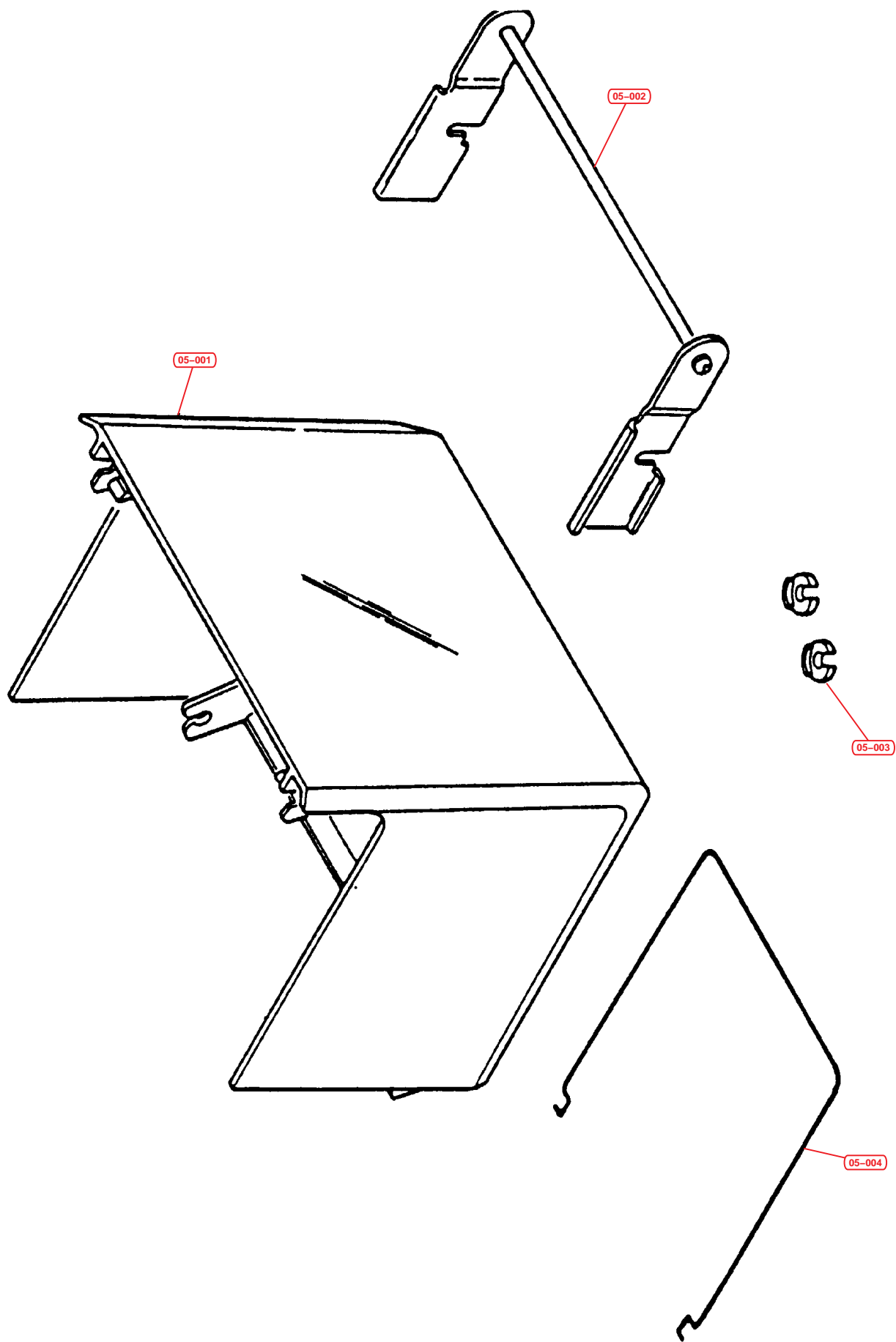


Fig.5 - Legal kit packaging

<b>N°</b>	<b>Référence</b>	<b>Description</b>
05-001	P24BPF1***079	LEGAL PAPER COVER
05-002	P24BPF1***080	BRACKET EXTENDER
05-003	P24BPF1***081	BRACKET CLIPS
05-004	P24BPF1***082	LEGAL PAPER SUPPORT
05-005	P24BPF1***083	MANUAL