

Parts List

In this chapter...

- Serial Number Format
- Using the Parts List
- Print Engine Parts
- Optional 550-Sheet Feeder
- Optional 1100-Sheet Feeder
- Xerox Supplies and Accessories
- Service Kits

Chapter 9

Serial Number Format

Changes to Xerox products are made to accommodate improved components as they become available. As improvements are made, part numbers may change from those appearing in this section. To get the latest part, provide the following information when ordering:

- Component's part number
- Product type or configuration number
- Serial number of the printer

The serial number is coded as follows:

- The text “**S/N**” followed by the serial number in the barcode.
- The barcode **does not** include a field identifier.
- The nine digit serial number format **PPRSSSSS** where:

PPP - Is the alphanumeric Product Code

Product	Configuration	Voltage	Product Code
6300	N, DN	110 V	WHH
6300	N, DN	220 V	WHK
6350	DP, DT, DX	110 V	WNN
6350	DP, DT, DX	220 V	WNP
6360	N, DN, DT, DX	110 V	DBY
6360	N, DN, DT, DX	220 V	DCA

R - Is the numeric revision digit. Changes at major product updates or when the serial number is reset to a starting value or (30001, 60001, or 90001).

SSSSS - Is the five digit numeric serial number.

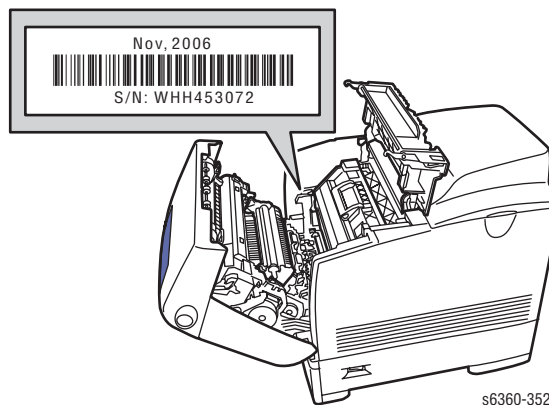
For example:

S/N WHH453072

WHH = Product code for the 6300, configuration N or DN, 110 V Printer

4 = Revision level

53072 = Serial number for 6300 N



Using the Parts List

Only those parts listed with part numbers are available for order. Parts listed without part numbers are only available as part of a parent assembly or Service Kit.

1. **ID No.:** The item number reference to the parts list diagram.
2. **Part Number:** The material part number used to order specific parts.

Note

Parts specific to a particular model are listed as shown in this example:

ID No	Part Number	Name/Description
1.	116-1989-00 054K38040	Chute Assy In (with 2~30), (6300/6350) Chute Assy In (with 2~31), (6360)

Alphanumeric part numbers (054K38040) are either 6360-unique, as indicated above, or common for all models. 6300/6350-unique part numbers use the numeric, hyphenated form (116-1989-00).

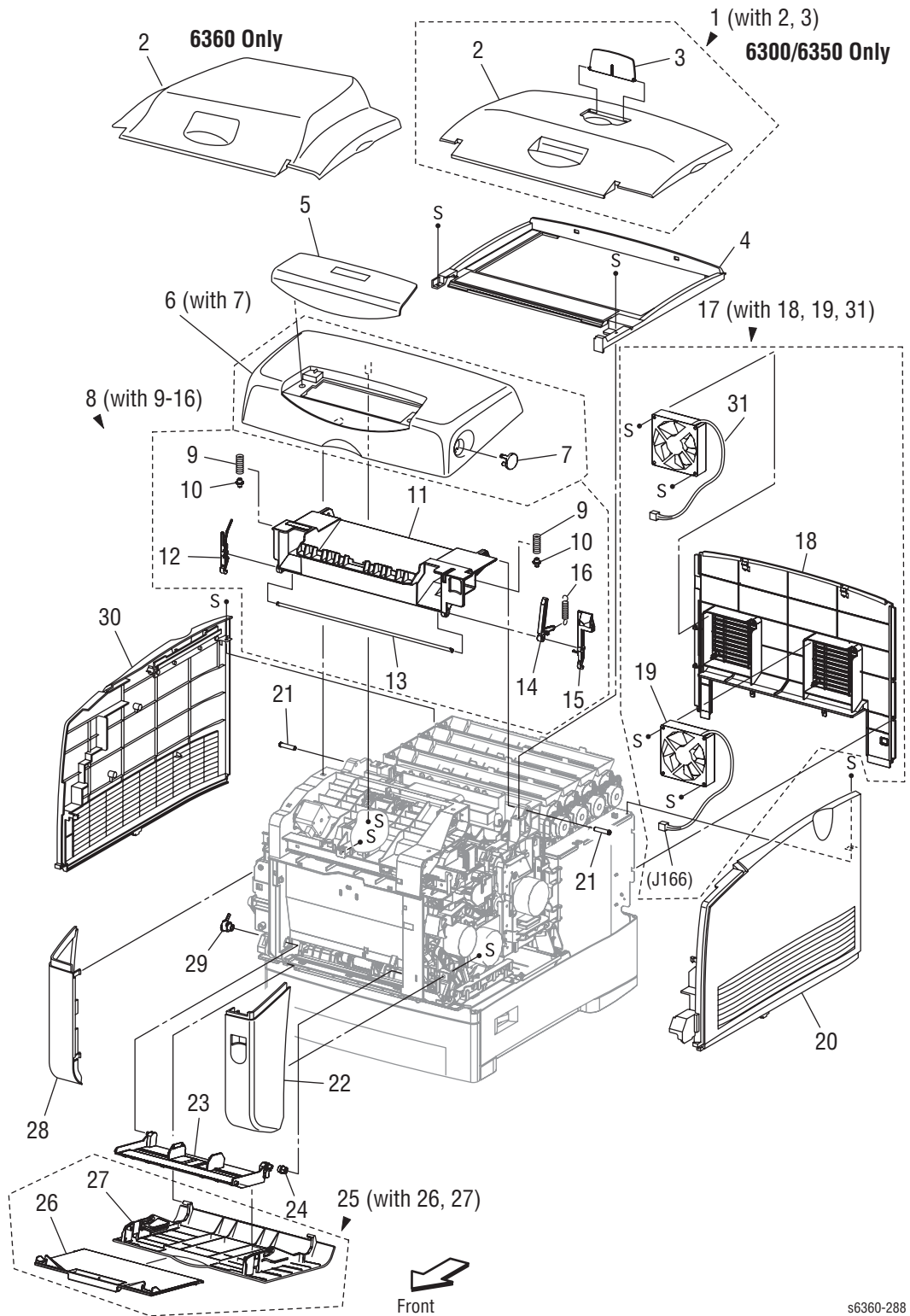
3. **Name/Description:** Name of the part and number supplied per order.
4. Parts throughout this manual are referenced **PL#.#.#**; For example, PL3.1.10 means the part is item 10 of Parts List 3.1.
5. In the exploded view diagrams, a black triangle preceding a number followed by a parenthetical statement indicates the item is a parent assembly, made up of the parts listed in parentheses and enclosed by a dashed line.
6. The notation “**(with X~Y)**” following a part name indicates an assembly includes components X through Y. For example, “1 (with 2~4)” means assembly number 1 consists of parts 2, 3, and 4.
7. The notation “**J1<>J2 and P2**” is attached to a wire harness. It indicates that connector Jack 1 is attached to one end of the wire harness and connector J2 is attached to the other end that is plugged into P2.

Legend:

Identifier	Meaning
C	C-ring
E	E-ring
KL	K-clip
S	Screw

Print Engine Parts

Parts List 1.1 Covers

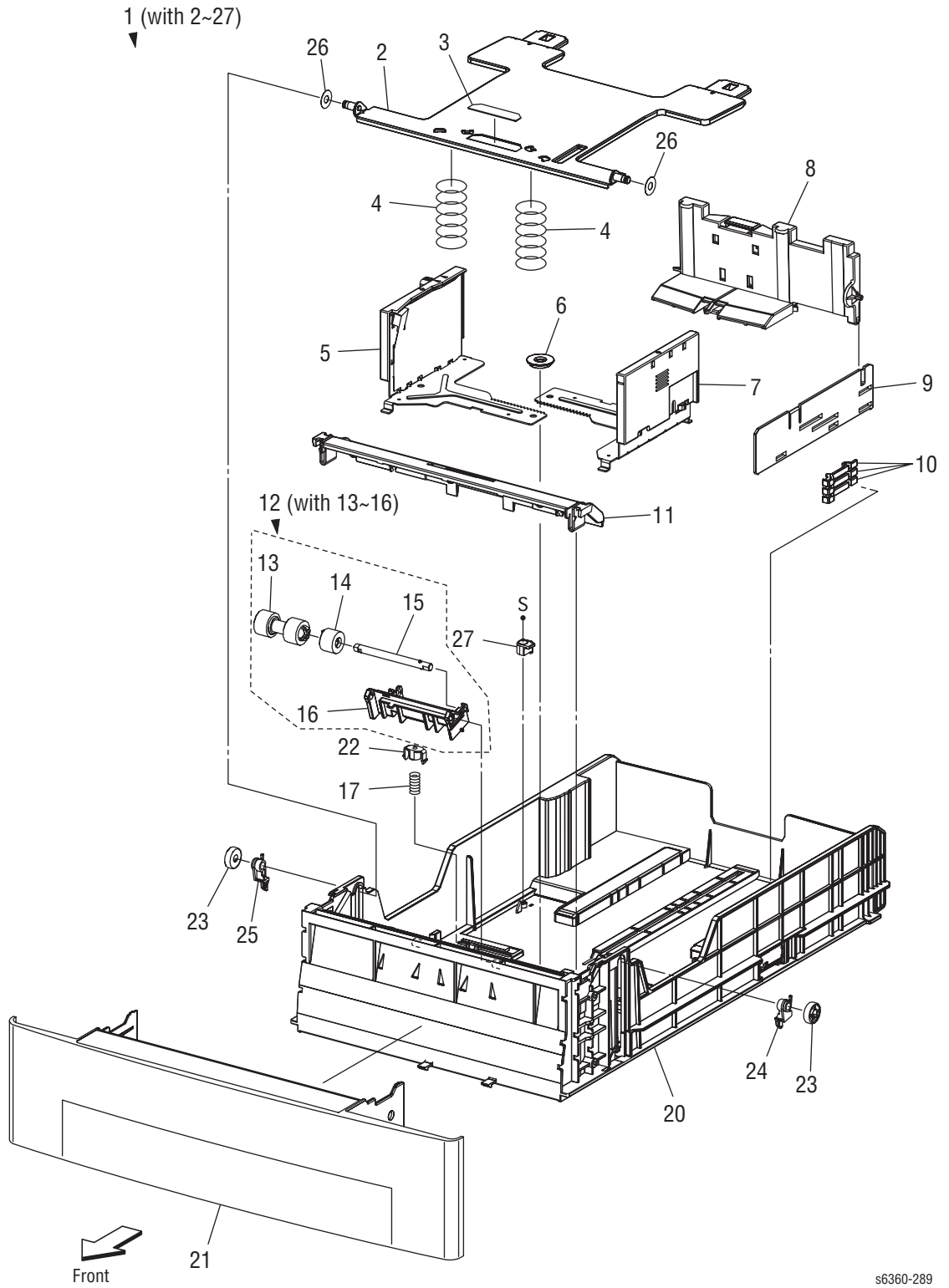


s6360-288

Parts List 1.1 Covers - Service Parts List

No.	Part Number	Name/Description
1.	116-1964-00	Cover Assy Top (with 2,3), (6300/6350)
2.	802E95621	Cover, Top, (6360)
3.	116-2044-00	Cover Top Stopper
4.	802E76574	Cover Top Main
5.	333-4419-00 333-4424-00 101E28720	Control Panel, (6300) Control Panel, (6350) Control Panel, (6360)
6.	116-1966-00 802K91992	Cover Assy Front (with 7), (6300/6350) Cover Assy Front (with 7), (6360)
7.		Lever Out
8.	116-1967-00 802K98890	Cover Assy Top (Door C) (with 9~16), (6300/6350) Cover Assy Top (Door C) (with 9~16), (6360)
9.		Spring L/R
10.		Plunger
11.		Cover Top Phd
12.		Latch Top L
13.		Shaft Latch
14.		Latch Top Ir R
15.		Latch Top R
16.		Spring Stopper Bottom
17.		Cover Assy Rear (with 18,19)
18.	116-1968-00 802E95631	Cover Rear, (6300/6350) Cover Rear, (6360)
19.	127E83840	Fan Rear
20.	802K74543	Cover Side Right
21.		Stud Top
22.	802E75932	Cover Front Right
23.	050K58270	Tray 1 (MPT) Base
24.	Part of Tray Holder Kit	Holder Tray Right
25.	802K74593	Tray 1 (MPT) (with 26, 27)
26.		Tray 1 (MPT) Slide
27.		Cover Tray 1 (MPT)
28.	116-1974-00 802K91050	Cover Front Left, (6300/6350) Cover Front Left, (6360)
29.	Part of Tray Holder Kit	Holder, Tray Left
30.	802K74534	Cover Side Left
31.	127E84830	LVPS Fan (6360)

Parts List 2.1 Tray 2

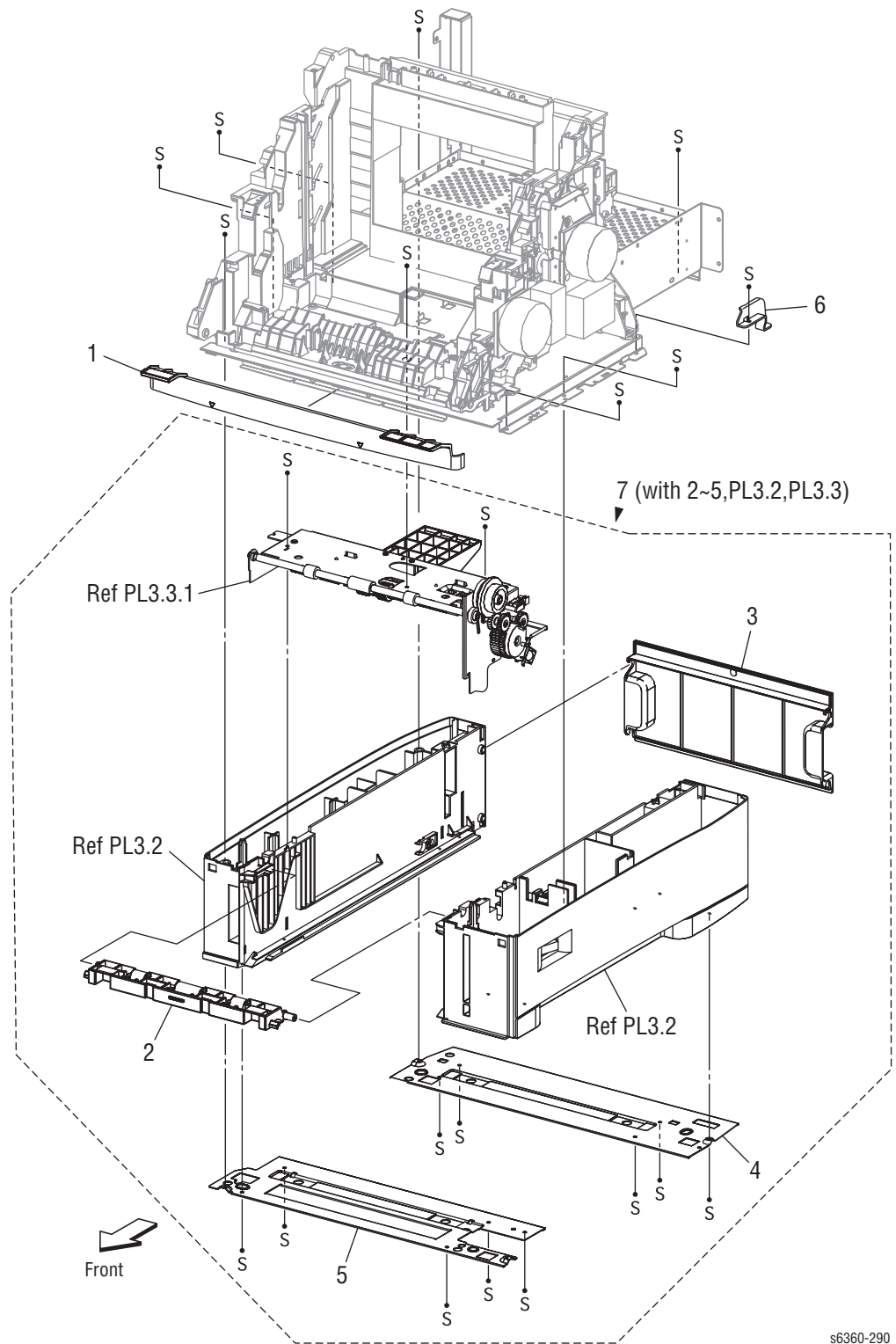


s6360-289

Parts List 2.1 Cassette, Paper - Service Parts List

ID No.	Part Number	Name/Description
1.	604K28854	Universal Paper Tray (with 2~27)
2.		Plate Bottom
3.		Pad Bottom
4.		Spring N/f
5.		Guide Side Assy L
6.		Gear Manual
7.		Guide Side Assy R
8.		Guide End Assy
9.		Actuator Guide End
10.		Actuator Size
11.	054E27130	Chute Turn
12.	Part of Paper Feed Roller Kit	Universal Tray Retard Roller Assy (with 13~16)
13.		Roll Assy
14.		Clutch Assy Friction
15.		Shaft Retard
16.		Holder Retard
17.		Spring Retard
18.		
19.		
20.		Housing Cst 500
21.		Handle Cst
22.		Holder Spring Retard
23.		Roll PB
24.		Stopper Link PB R
25.		Stopper Link PB L
26.		Spacer Plate BTM
27.		Stopper Block

Parts List 3.1 Feeder (1/3)



s6360-290

Parts List 3.1 Feeder (1/3) - Service Parts List

ID No.	Part Number	Name/Description
1.	802E76632	Frame Feeder Front
2.	054K28372	Feeder Chute Assy
3.	802E78002	Cover Paper Tray Rear
4.		Frame Feeder Bottom Rear
5.		Frame Feeder Bottom Front
6.		Support Link SW
7.	059K47071	Feeder Assy (with 2~5, PL3.2, PL3.3)