



KM-1530

KM-2030

PARTS LIST

Published in Oct.'00
842AV120

NOTE

1. Indicate parts number and machine model when placing an order.

eg.	Parts Number	Parts Name	Machine Model	Cycle	Quantity
	2AV04010	FRONT COVER	KM-1530	60Hz	1
	2AX04020	FRONT COVER	KM-2030	60Hz	1

2. Service calls and freight will be charged separately.

3. Symbols in the "Parts Number" column.

- Parts with "●" indicates the service parts and the parts without "●" can not be supplied.

- Parts with "." are component parts or sub-assemblies of the assembly appearing immediately above them.

eg.	Parts Number	Parts Name	Parts Number	Parts Name
	2AV01030	POWER INLET ASS'Y	•L0023070	ROUND TYPE TYERMINAL, 173636-1
			•2AV27350	INLET, POWER SOURCE

- Parts with ".•" are component parts or sub-assembly with "." appearing immediately above them.

eg.	Parts Number	Parts Name	Parts Number	Parts Name
	•41529210	SOCKET ASS'Y, KEY COUNTER	••41529105	PLUG EL 4P
			••29127200	SOCKET (S) EL

4. See the last page of this parts list for the classification of the screws in the illustrations.

Parts List

KM-1530

KM-2030

———— CONTENTS ————

FIG. 1 EXTERIOR COVERS	2	FIG. 10 LASER SCANNER UNIT	20
FIG. 2 FRAMES	4	FIG. 11 IMAGING UNIT	22
FIG. 3 CASSETTE	6	FIG. 12 FIXING SECTION	26
FIG. 4 CASSETTE(KM-2030)	8	FIG. 13 DRIVING SECTION	28
FIG. 5 DECK UNIT(KM-2030)	10	FIG. 14 ELECTRICAL COMPONENTS	30
FIG. 6 PAPER FEED-IN SECTION	12	FIG. 15 OPERATION UNIT	32
FIG. 7 PAPER CONVEYING SECTION.....	14	FIG. 16 ACCESSORIES & OPTION	34
FIG. 8 ORIGINAL HOLDER	16		
FIG. 9 OPTICAL SECTION	18	• INDEX.....	36

FIG. 1 EXTERIOR COVERS

2AV/2AX

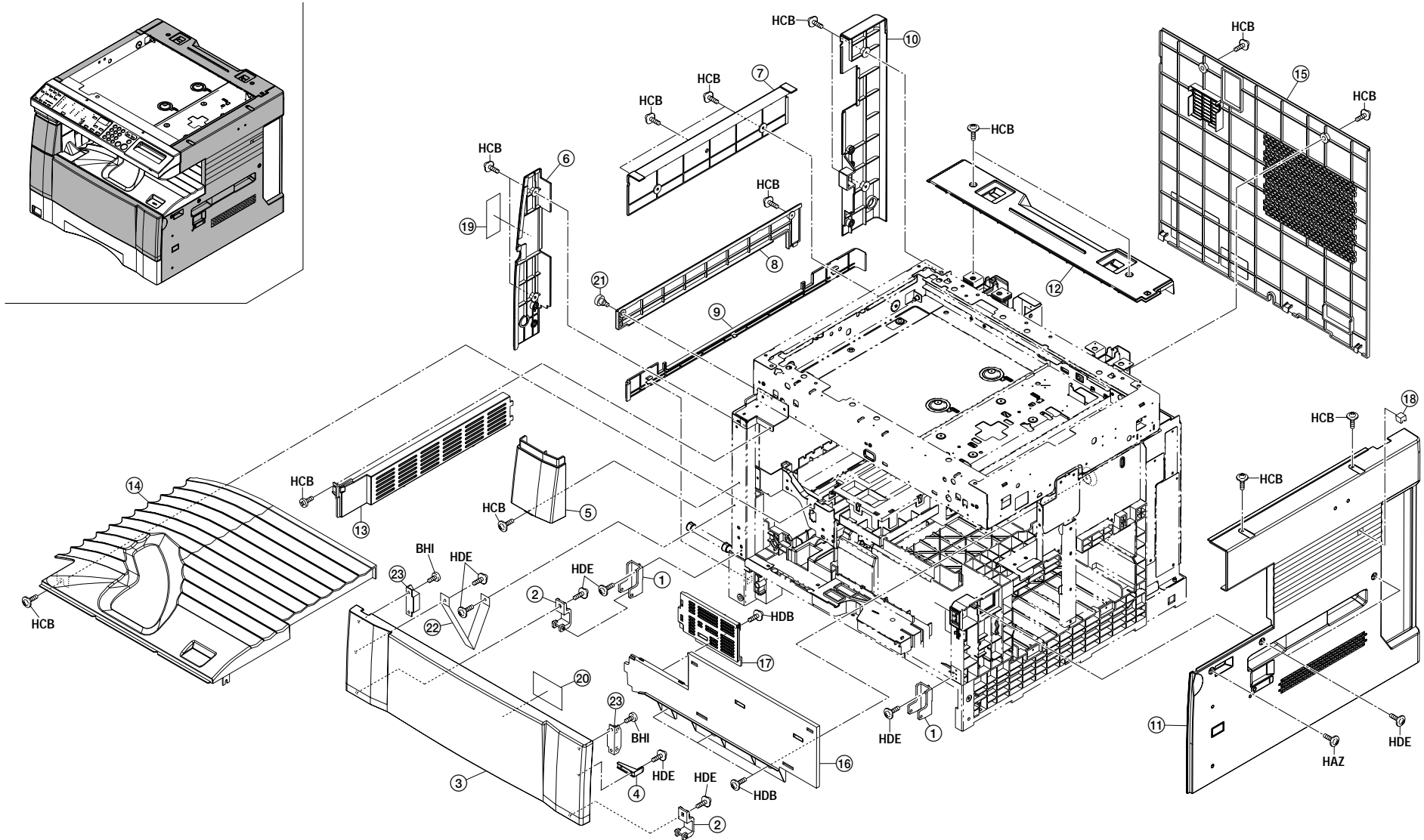


FIG. 1 EXTERIOR COVERS

2AV/2AX

SP	Ref. No.	Part. No.	Description	Quantity		
				120V	230V	240V
	1	2AV02120	MOUNT HINGE	2	2	2
●	2	2AV02140	FRONT HINGE,COVER	2	2	2
●	3	2AV04010	FRONT COVER(KM-1530)	1	1	1
●	3	2AX04020	FRONT COVER(KM-2030)	1	1	1
●	4	2AV04020	HOLDER SAFETY SWITCH	1	1	1
●	5	2AV04030	UPPER FRONT COVER	1	1	1
●	6	2AV04040	FRONT LEFT COVER	1	1	1
●	7	2AV04050	UPPER LEFT COVER	1	1	1
●	8	2AV04060	LEFT COVER,MIDDLE	1	1	1
●	9	2AV04070	LOWER LEFT COVER	1	1	1
●	10	2AV04080	REAR LEFT COVER	1	1	1
●	11	2AV04090	RIGHT COVER	1	1	1
●	12	2AV04100	REAR COVER SCANNER	1	1	1
●	13	2AV04160	UPPER COVER,EJECT	1	1	1
●	14	2AV04170	COVER,TRAY	1	1	1
●	15	2AV04190	REAR COVER(KM-1530)	1	1	1
●	15	2AX04010	REAR COVER(KM-2030)	1	1	1
●	16	2AV04210	REAR COVER,TRAY	1	1	1
●	17	2AV04220	UPPER REAR COVER,TRAY	1	1	1
●	18	2AV04260	LID RIGHT COVER	1	1	1
●	19	2AV05050	LABEL,CONVEYING JAM	1	1	1
	20	2AC05130	LABEL,SUPPLY(EUR)	1	1	1
	21	48128107	PIN,CLEANING BLADE	1	1	1
	22	35904240	AUXILIARY PLATE,CONVEYING UNIT	1	1	1
	23	71804400	MAGNET,LOWER FRONT COVER	2	2	2

- Parts with "●" are component parts or sub-assemblies of the assembly appearing immediately above them.
- Parts with "●" indicates the Service parts.

FIG. 2 FRAMES

2AV/2AX

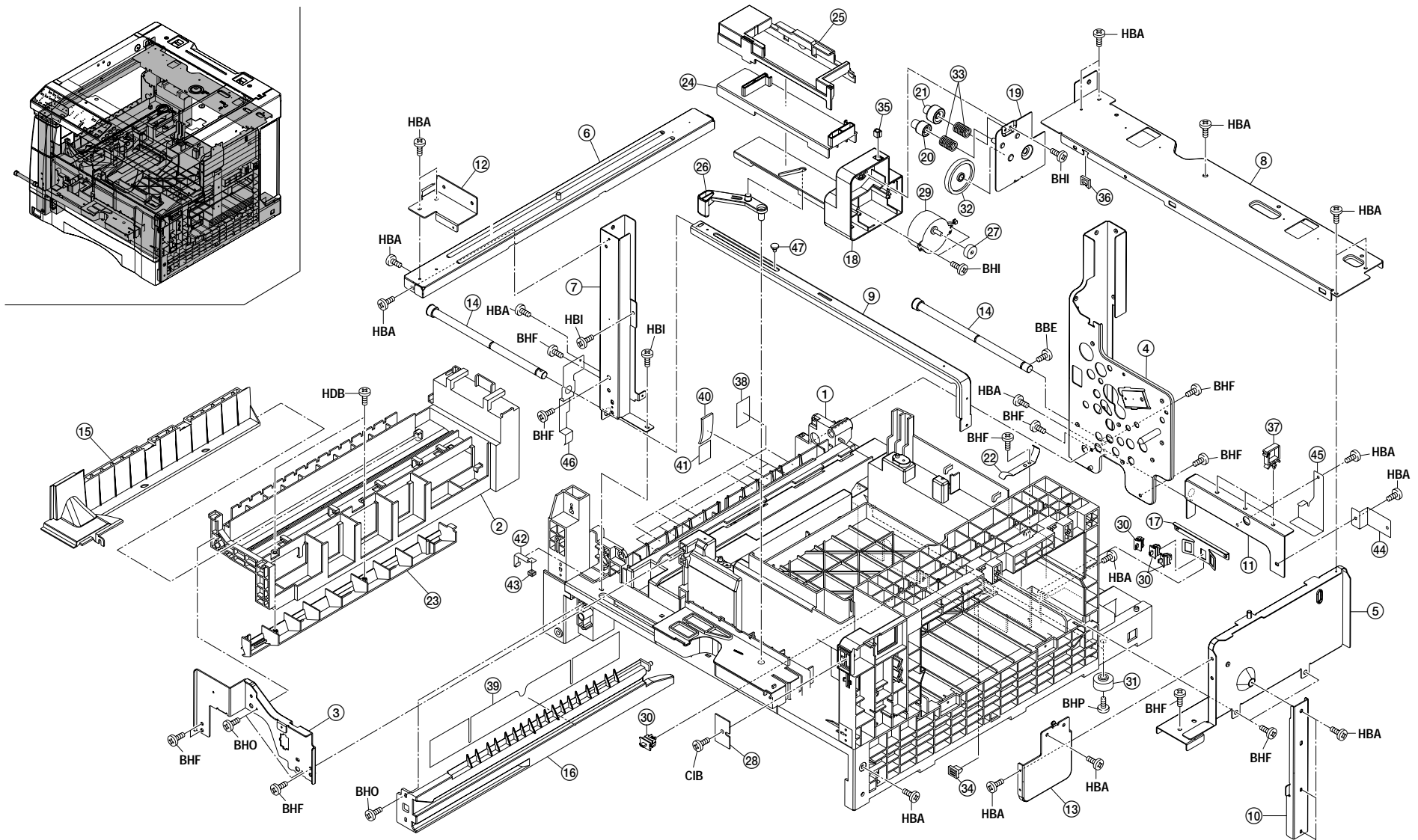


FIG. 2 FRAMES

SP	Ref. No.	Part. No.	Description	Quantity		
				120V	230V	240V
	1	2AV02010	BASE,MACHINE	1	1	1
	2	2AV02020	UPPER FRAME,MACHINE	1	1	1
	3	2AV02030	FRONT FRAME	1	1	1
	4	2AV02040	REAR FRAME	1	1	1
	5	2AV02050	RIGHT SUPPORT PLATE,SCANNER	1	1	1
	6	2AV02060	LEFT SUPPORT PLATE,SCANNER	1	1	1
	7	2AV02070	FRONT STAY	1	1	1
	8	2AV02080	TOP REINFORCEMENT	1	1	1
	9	2AV02090	LOWER FRONT REINFORCEMENT	1	1	1
	10	2AV02100	RIGHT REINFORCEMENT	1	1	1
	11	2AV02110	MOUNT,SHAFT HANDLE	1	1	1
	12	2AV02150	FRONT RETAINER,SCANNER	1	1	1
	13	2AV02160	RIGHT RETAINER,SCANNER	1	1	1
●	14	2AV02170	SHAFT,HANDLE	2	2	2
●	15	2AV04180	COVER DUCT	1	1	1
	16	2AV06080	LEFT RAIL,CASSETTE	1	1	1
	17	2AV06100	RIGHT MOUNT,SIZE DETECTION	1	1	1
	18	2AV15010	MOVING BASE,CARTRIDGE DRIVE	1	1	1
	19	2AV15020	MOUNT,CARTRIDGE DRIVE	1	1	1
	20	2AV15030	GEAR A,TONER SUPPLY	1		
	20	2AV15050	GEAR C,TONER SUPPLY		1	1
	21	2AV15040	GEAR B,TONER SUPPLY	1		
	21	2AV15060	GEAR D,TONER SUPPLY		1	1
	22	2AV26250	GROUND PLATE,LSU	1	1	1
	23	2AR10080	MOUNT BASE,CLEANING LAMP	1	1	1
	24	2AR15020	MOVING BASE,CARTRIDGE	1	1	1
	25	2AR15060	COVER,CARTRIDGE MOUNT BASE	1	1	1
	26	2AR15080	LEVER,CARTRIDGE MOVING	1	1	1
	27	45727502	GEAR,TONER MOTOR	1	1	1
	28	49628105	RECEIVER,MAGNET	1	1	1
●	29	33915190	TONER MOTOR	1	1	1
●	30	35927420	SWITCH,SIZE	4	4	4
●	31	66260030	BASE RUBBER,ORTER	2	2	2
	32	71821390	IDLE GEAR 48	1	1	1
	33	73818100	SPRING, BLADE THRUST	2	2	2
●	34	77906200	CASSETTE CATCHER	1	1	1
	35	J0455020	CASE,DF3-2EP-2A(HIROSE)	1	1	1
	36	M2104350	EDGING,EDS-0607M(KITAGAWA)	1	1	1
	37	M2109010	WIRE SADDLE,WS-2NS	3	3	3
	38	2AV06240	RIGHT FRONT GUIDE FILM,REGISTRATION	6	6	6

2AV/2AX

SP	Ref. No.	Part. No.	Description	Quantity		
				120V	230V	240V
	39	2AV06250	GUIDE FILM,RAIL CASSETTE	1	1	1
	40	2AV06330	SHEET B,BYPASS	4	4	4
	41	2AV06340	FRONT FILM,BYPASS PAD	4	4	4
	42	2AV06390	PLATE SPRING,BYPASS TABLE	1	1	1
	43	2AV06400	SPONGE,BYPASS TABLE	1	1	1
	44	2AV26280	GROUND PLATE A,HANDLE	1	1	1
	45	2AV26290	GROUND PLATE,HANDLE B	1	1	1
	46	2AV26300	GROUND PLATE STAY	1	1	1
	47	48129208	PIN,TENSION	1	1	1

- Parts with "●" are component parts or sub-assemblies of the assembly appearing immediately above them.
- Parts with "●" indicates the Service parts.

FIG. 3 CASSETTE

2AV/2AX

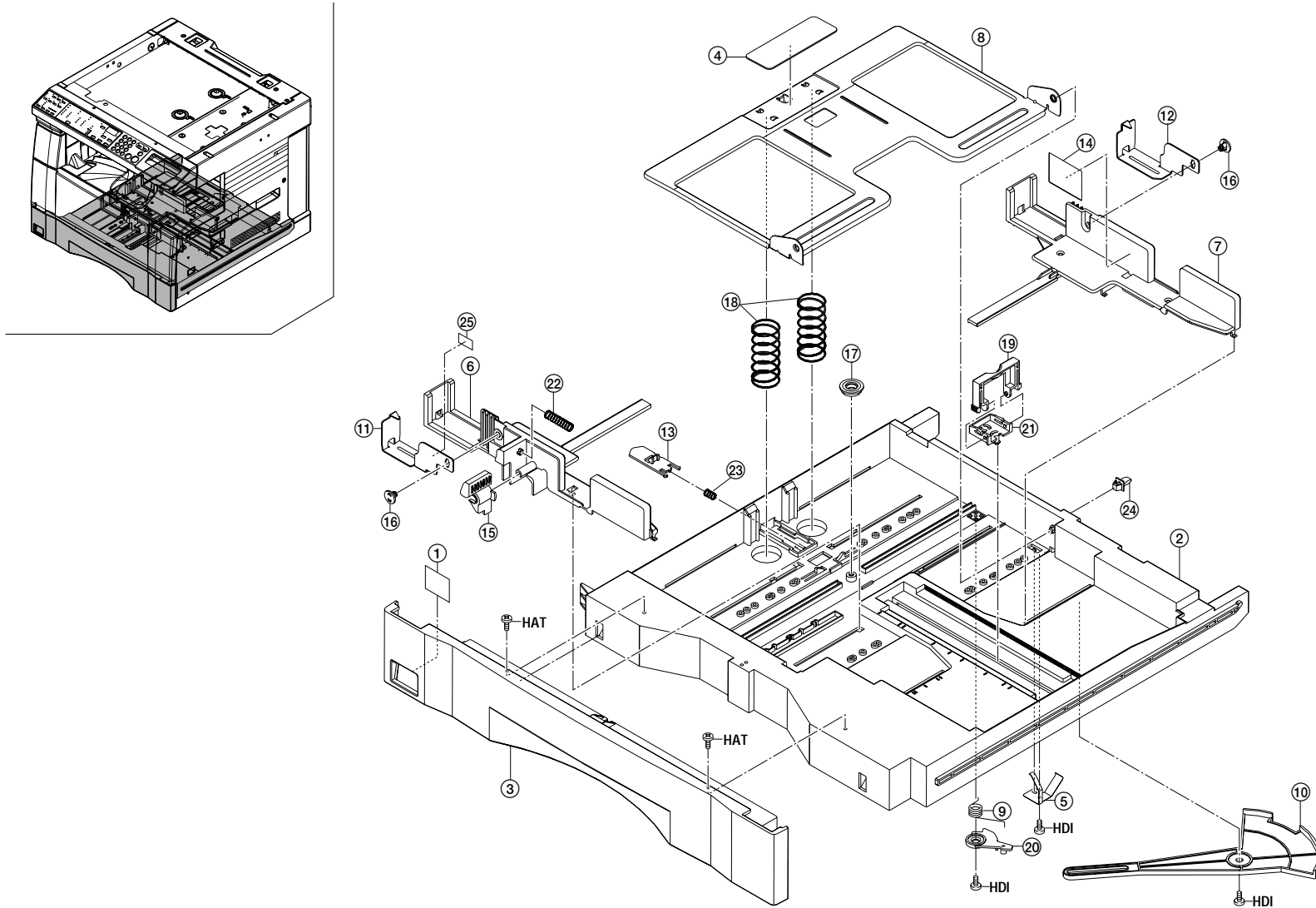


FIG. 3 CASSETTE

2AV/2AX

SP	Ref. No.	Part. No.	Description	Quantity		
				120V	230V	240V
●	1	2AV05090	SHEET,CASSETTE SIZE INDICATION(METRIC)		1	1
●	1	2AV05100	SHEET,CASSETTE SIZE INDICATION(INCH)	1		
	2	2AV07010	CASSETTE,PAPER FEED	1	1	1
●	3	2AV07020	COVER,CASSETTE	1	1	1
●	4	2AV07030	SHEET,CASSETTE	1	1	1
	5	2AV07040	GROUND PLATE,CASSETTE	1	1	1
	6	2AV07050	FRONT CURSOR,CASSETTE	1	1	1
	7	2AV07060	REAR CURSOR,CASSETTE	1	1	1
	8	2AV07070	WORK PLATE,CASSETTE	1	1	1
	9	2AV07080	SPRING,SIDE SIZE DETECTION	1	1	1
	10	2AV07090	TURN PLATE,TRAILING EDGE SIZE DETECTION	1	1	1
	11	2AV07170	FRONT CLAW,CASSETTE	1	1	1
	12	2AV07180	REAR CLAW,CASSETTE	1	1	1
●	13	19507050	LEVER,CASSETTE BASE RELEASE	1	1	1
	14	2AR05200	LABEL,PAPER UPPER LIMIT	1	1	1
●	15	34907060	LEVER,CURSOR RETAINING	1	1	1
	16	34907070	PIN,CLAW CASSETTE	2	2	2
	17	34907141	GEAR 18,CASSETTE	1	1	1
	18	34907380	SPRING,CASSETTE	2	2	2
●	19	35907091	CURSOR,PAPER TRAILING EDGE	1	1	1
	20	35907132	PROJECTION,SIDE REGISTRATION DETECTION	1	1	1
●	21	35907171	MOUNT BASE,TRAILING EDGE CURSOR	1	1	1
	22	68802070	SPRING A,LIFT UP	1	1	1
	23	76508130	SPRING BELT GUIDE ROLLER	1	1	1
●	24	77906210	CASSETTE STOPPER	1	1	1
	25	2AV06350	FRONT SPACER A,CLAW CASSETTE	1	1	1

- Parts with "●" are component parts or sub-assemblies of the assembly appearing immediately above them.
- Parts with "●" indicates the Service parts.

FIG. 4 CASSETTE (KM-2030)

2AV/2AX

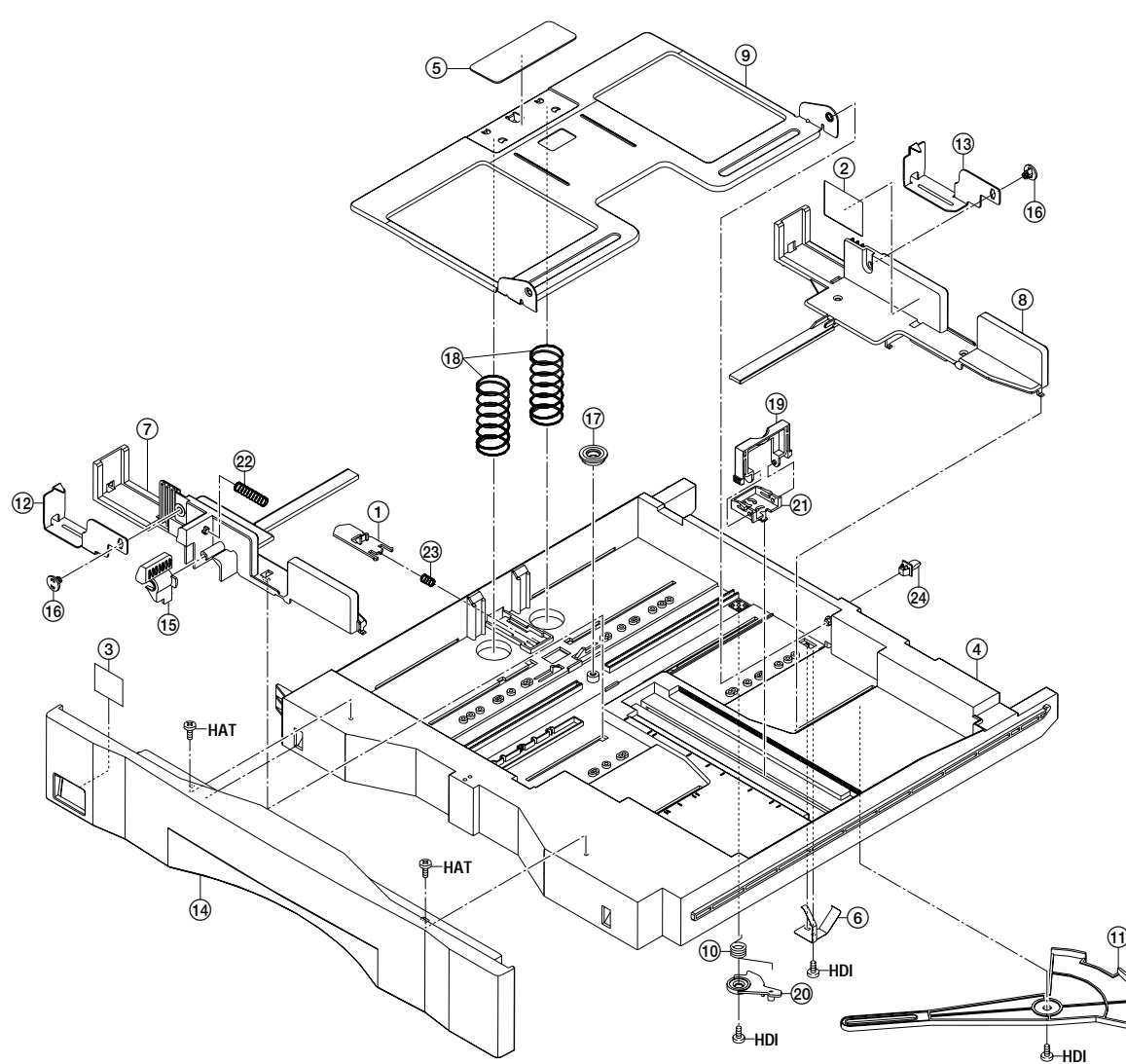
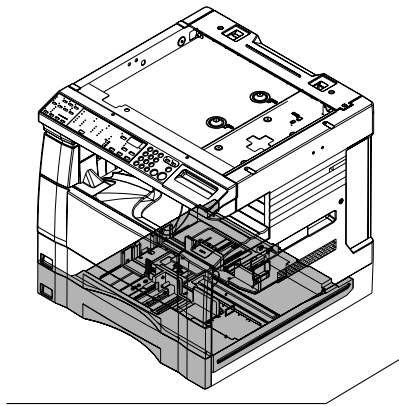


FIG. 4 CASSETTE (KM-2030)

2AV/2AX

SP	Ref. No.	Part. No.	Description	Quantity		
				120V	230V	240V
●	1	19507050	LEVER,CASSETTE BASE RELEASE	1	1	1
	2	2AR05200	LABEL,PAPER UPPER LIMIT	1	1	1
●	3	2AV05090	SHEET,CASSETTE SIZE INDICATION(METRIC)		1	1
●	3	2AV05100	SHEET,CASSETTE SIZE INDICATION(INCH)	1		
	4	2AV07010	CASSETTE,PAPER FEED	1	1	1
●	5	2AV07030	SHEET,CASSETTE	1	1	1
	6	2AV07040	GROUND PLATE,CASSETTE	1	1	1
	7	2AV07050	FRONT CURSOR,CASSETTE	1	1	1
	8	2AV07060	REAR CURSOR,CASSETTE	1	1	1
	9	2AV07070	WORK PLATE,CASSETTE	1	1	1
	10	2AV07080	SPRING,SIDE SIZE DETECTION	1	1	1
	11	2AV07090	TURN PLATE,TRAILING EDGE SIZE DETECTION	1	1	1
	12	2AV07190	FRONT CLAW A,CASSETTE	1	1	1
	13	2AV07200	REAR CLAW A,CASSETTE	1	1	1
●	14	3A507010	COVER,CASSETTE	1	1	1
●	15	34907060	LEVER,CURSOR RETAINING	1	1	1
	16	34907070	PIN,CLAW CASSETTE	2	2	2
	17	34907141	GEAR 18,CASSETTE	1	1	1
	18	34907380	SPRING,CASSETTE	2	2	2
●	19	35907091	CURSOR,PAPER TRAILING EDGE	1	1	1
	20	35907132	PROJECTION,SIDE REGISTRATION DETECTION	1	1	1
●	21	35907171	MOUNT BASE,TRAILING EDGE CURSOR	1	1	1
	22	68802070	SPRING A,LIFT UP	1	1	1
	23	76508130	SPRING BELT GUIDE ROLLER	1	1	1
●	24	77906210	CASSETTE STOPPER	1	1	1

- Parts with "●" are component parts or sub-assemblies of the assembly appearing immediately above them.
- Parts with "●" indicates the Service parts.

FIG. 5 DECK UNIT (KM-2030)

2AV/2AX

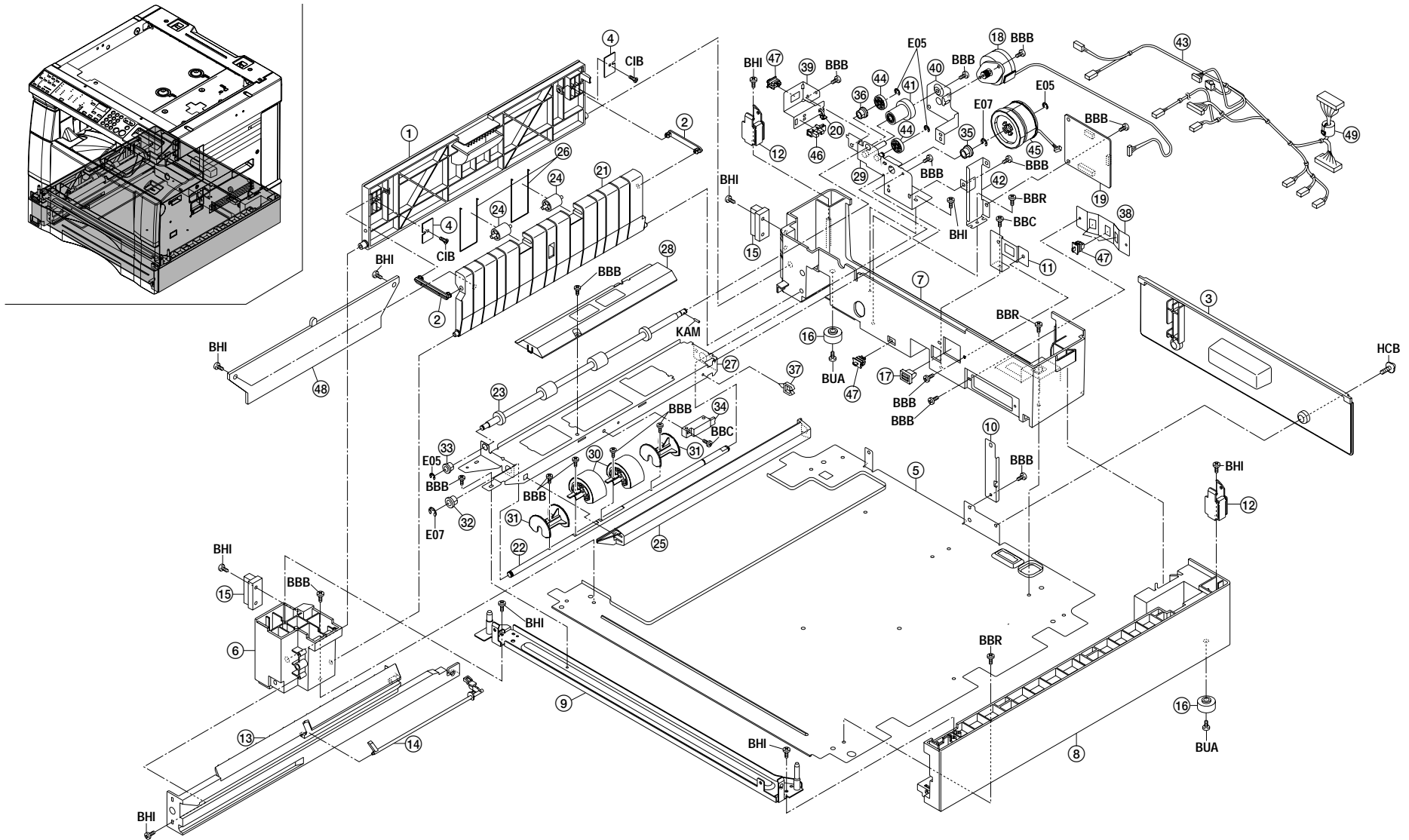


FIG. 5 DECK UNIT (KM-2030)

SP	Ref. No.	Part. No.	Description	Quantity		
				120V	230V	240V
●	1	3A504010	COVER,RELEASE	1	1	1
	2	3A504020	COUPLER,RELEASE	2	2	2
●	3	3A504030	REAR COVER	1	1	1
	4	49628105	RECEIVER,MAGNET	2	2	2
	5	3A502010	BOTTOM BASE	1	1	1
	6	3A502020	LEFT BASE	1	1	1
	7	3A502030	REAR BASE	1	1	1
	8	3A502040	RIGHT BASE	1	1	1
	9	3A502060	FRONT JUNCTION PLATE,DESK	1	1	1
	10	3A502070	REAR JUNCTION PLATE,DESK	1	1	1
	11	3A502090	MOUNT,CATCH	1	1	1
	12	3A502100	REAR JUNCTION PLATE,DESK SIDE	2	2	2
	13	3A506010	LEFT RAIL,CASSETTE	1	1	1
●	14	3A506030	ACTUATOR,CONVEYING	1	1	1
	15	62207620	MAGNET,FEED SHIFT	2	2	2
●	16	66260030	BASE RUBBER,ORTER	2	2	2
●	17	77906200	CASSETTE CATCHER	1	1	1
●	18	36027020	MOTOR,CASSETTE	1	1	1
●	19	36093040	PARTS MOTOR DRIVE PCB(SP)	1	1	1
	20	M2607010	BINDING BAND,PLT1M	1	1	1
	21	3A506020	GUIDE,CONVEYING	1	1	1
	22	3A506050	SHAFT,PAPER FEED	1	1	1
●	23	3A506060	ROLLER,CONVEYING	1	1	1
	24	3A506070	PULLEY,CONVEYING	2	2	2
	25	3A506080	COVER,EMPTY SWITCH	1	1	1
	26	3A506090	SPRING,PRESSING	2	2	2
	27	3A506100	FRAME,PAPER FEED	1	1	1
	28	3A506110	COVER,PAPER FEED	1	1	1
	29	3A522010	MOUNT,DRIVE	1	1	1
●	30	2AV06010	PULLEY,PAPER FEED	2	2	2
●	31	2AV06030	COLLAR,PAPER FEED	2	2	2
	32	49028112	BUSHING 8,LOWER REG.ROLLER	1	1	1
	33	29806560	BUSHING 6	1	1	1
●	34	65027360	SWITCH,EMPTY	1	1	1
	35	67322230	BUSHING 8	1	1	1
●	36	73210450	BUSH, 6	1	1	1
	37	M2105710	MINIATURE CLAMP,UAMS-05-0	1	1	1
	38	3A502080	MOUNT,SIZE DETECTION SWITCH	1	1	1
	39	3A506040	MOUNT,RELEASE SWITCH	1	1	1
	40	3A522020	MOUNT,MOTOR	1	1	1

2AV/2AX

SP	Ref. No.	Part. No.	Description	Quantity		
				120V	230V	240V
	41	3A522050	GEAR 16/52,IDLE	1	1	1
	42	3A526020	LEFT MOUNT,PCB	1	1	1
	43	3A527010	WIRE,CASSETTE	1	1	1
	44	18506140	LOWER GEAR 18,REGISTRATION	2	2	2
●	45	2AV27330	CLUTCH,PAPER FEED	1	1	1
●	46	35327400	SWITCH,FEED	1	1	1
●	47	35927420	SWITCH,SIZE	5	5	5
	48	3A506120	REINFORCEMENT,GUIDE	1	1	1
	49	2AR27750	CORE 11-25X14	2	2	2

- Parts with "●" are component parts or sub-assemblies of the assembly appearing immediately above them.
- Parts with "●" indicates the Service parts.

FIG. 6 PAPER FEED-IN SECTION

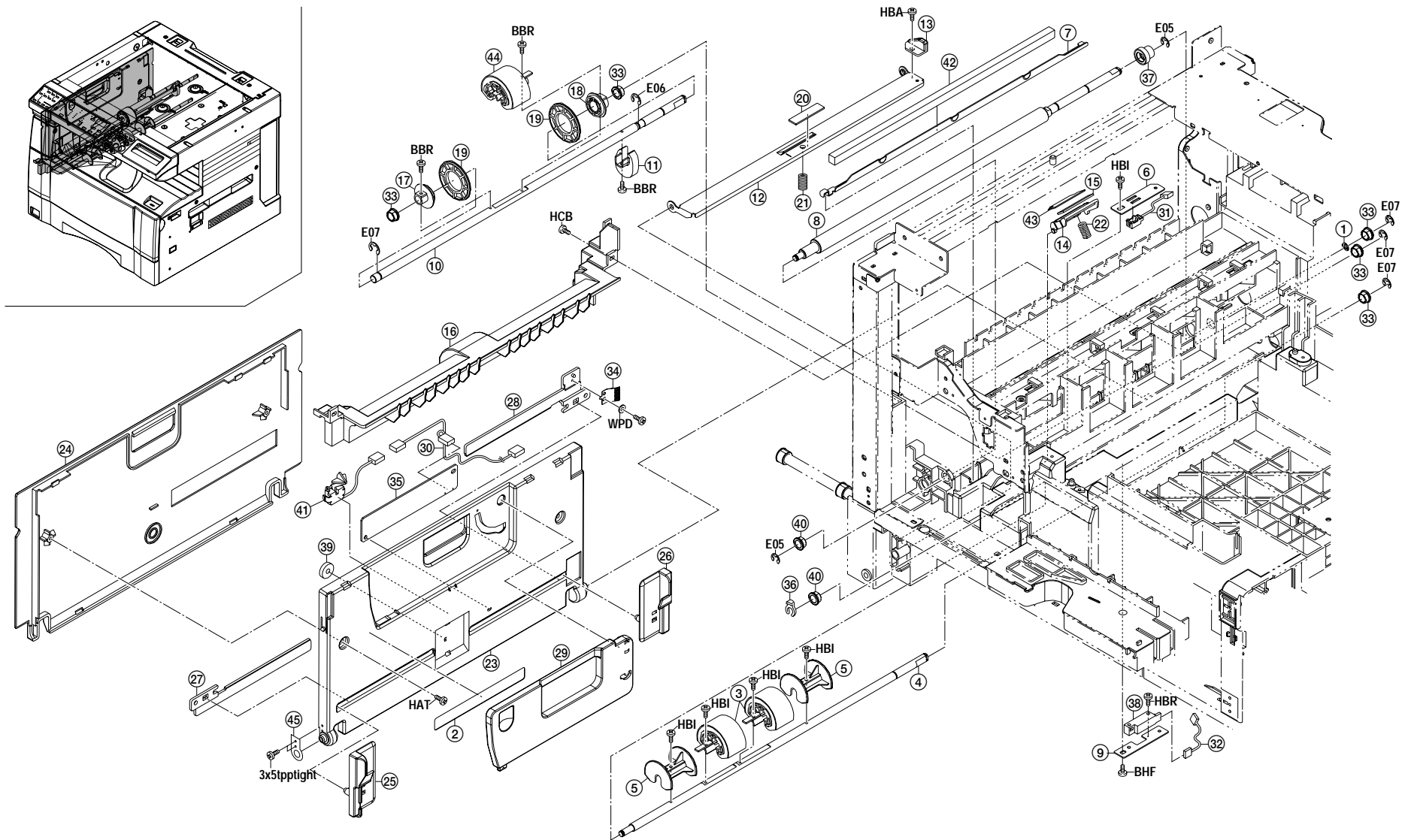


FIG. 6 PAPER FEED-IN SECTION

SP	Ref. No.	Part. No.	Description	Quantity		
				120V	230V	240V
●	1	2AV02180	GROUND PLATE,REGISTRATION ROLLER	1	1	1
●	2	2AV05110	LABEL,BYPASS SIZE INDICATION(METRIC)		1	1
●	2	2AV05120	LABEL,BYPASS SIZE INDICATION(INCH)	1		
●	3	2AV06010	PULLEY,PAPER FEED	2	2	2
	4	2AV06020	SHAFT,PAPER FEED	1	1	1
●	5	2AV06030	COLLAR,PAPER FEED	2	2	2
	6	2AV06040	MOUNT,REGISTRATION SWITCH	1	1	1
	7	2AV06050	MOUNT,REGISTRATION CLEANER	1	1	1
●	8	2AV06060	RIGHT ROLLER,REGISTRATION	1	1	1
	9	2AV06090	MOUNT,PAPER EMPTY SWITCH	1	1	1
	10	2AV06110	SHAFT,BYPASS	1	1	1
	11	2AV06120	CAM,BYPASS	1	1	1
	12	2AV06130	LIFT PLATE,BYPASS	1	1	1
	13	2AV06140	STOPPER,BYPASS	1	1	1
	14	2AV06150	MOUNT BASE,BYPASS PAD	1	1	1
●	15	2AV06160	SHEET,BYPASS	1	1	1
	16	2AV06170	COVER,BYPASS	1	1	1
	17	2AV06180	COLLAR A,BYPASS PAPER FEED	1	1	1
	18	2AV06190	COLLAR B,BYPASS PAPER FEED	1	1	1
	19	2AV06200	COLLAR C,BYPASS PAPER FEED	2	2	2
●	20	2AV06210	SHEET,BYPASS LIFT	1	1	1
	21	2AV06220	SPRING,BYPASS LIFT	1	1	1
●	22	2AV06230	SPRING,BYPASS PAD	1	1	1
●	23	2AV07100	UPPER TABLE,BYPASS(KM-1530)	1	1	1
●	23	2AX07010	UPPER TABLE,BYPASS(KM-2030)	1	1	1
●	24	2AV07110	COVER,BYPASS TABLE	1	1	1
	25	2AV07120	FRONT CURSOR,BYPASS	1	1	1
	26	2AV07130	REAR CURSOR,BYPASS	1	1	1
	27	2AV07140	FRONT RACK,BYPASS	1	1	1
	28	2AV07150	REAR RACK,BYPASS	1	1	1
●	29	2AV07160	SUPPORT PLATE,BYPASS	1	1	1
	30	2AV27180	WIRE,BYPASS TRAY(KM-1530)	1	1	1
	30	2AX27060	WIRE,BYPASS TRAY(KM-2030)	1	1	1
●	31	2AV27260	SWITCH,REGISTRATION	1	1	1
	32	2AV27270	JUNCTION WIRING,PAPER EMPTY SWITCH	1	1	1
●	33	49028101	BUSH 8	5	5	5
	34	33907110	TERMINAL,PAPER SIZE PCB	1	1	1
●	35	33928111	SIZE DETECTION PCB	1	1	1
	36	34806150	STOPPER 5	1	1	1
●	37	35906090	GEAR 15,REGISTRATION	1	1	1

2AV/2AX

SP	Ref. No.	Part. No.	Description	Quantity		
				120V	230V	240V
●	38	65027360	SWITCH,EMPTY	1	1	1
	39	65914120	GEAR 18,IDLE DEVELOPING	1	1	1
●	40	73210450	BUSH, 6	2	2	2
●	41	33906990	SWITCH,BYPASS SIZE DETECTION(KM-2030)	1	1	1
●	42	2AV93020	PARTS,ASS'Y RIGHT REGISTRATION CLEANER,SP	1	1	1
	43	2AV06300	FILM,BYPASS STOPPER TAPE	1	1	1
	44	2AV06320	PULLEY,PAPER FEED	1	1	1
	45	2AV06380	REINFORCEMENT,BYPASS	1	1	1

- Parts with "●" are component parts or sub-assemblies of the assembly appearing immediately above them.
- Parts with "●" indicates the Service parts.

FIG. 7 PAPER CONVEYING SECTION

2AV/2AX

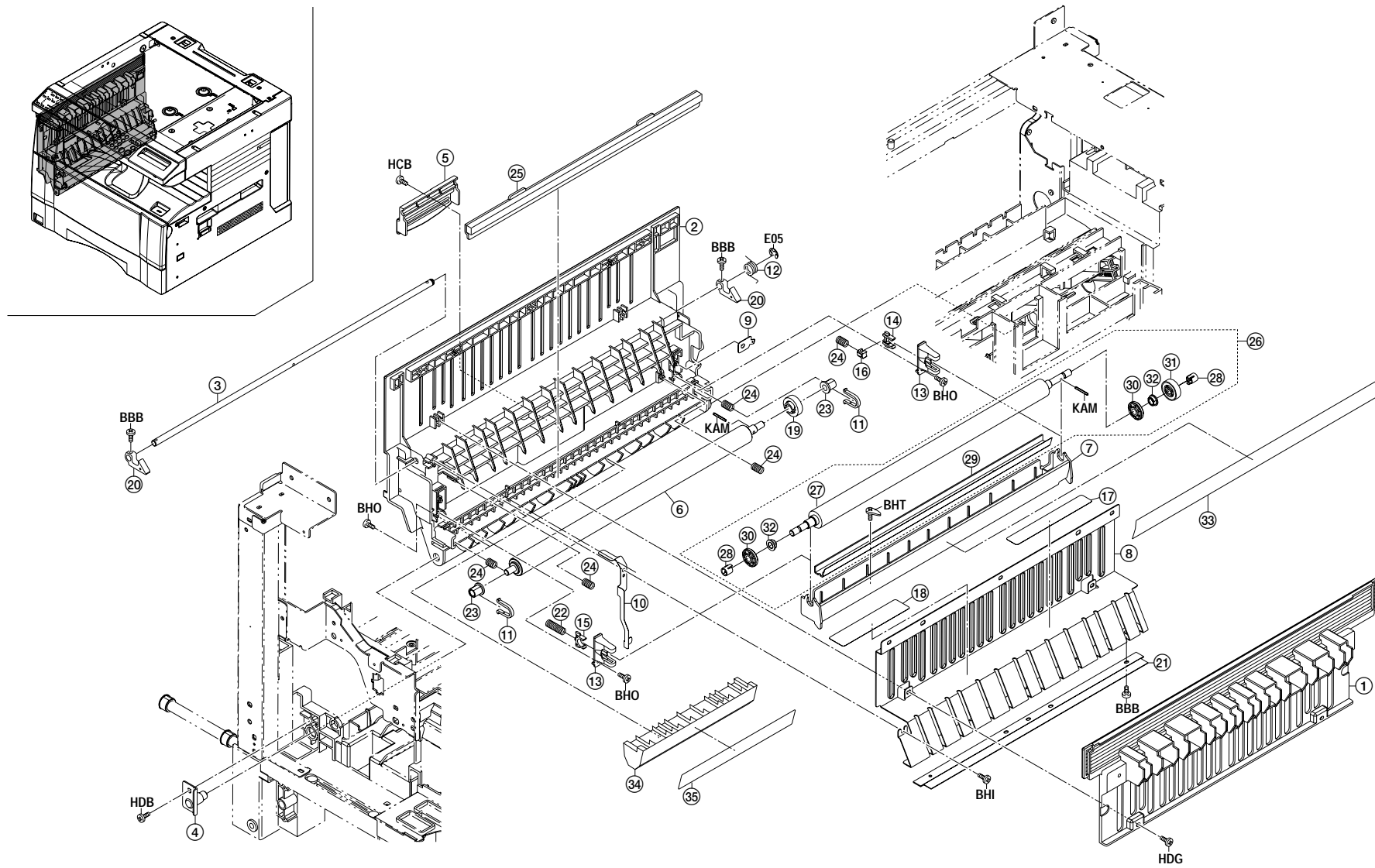


FIG. 7 PAPER CONVEYING SECTION

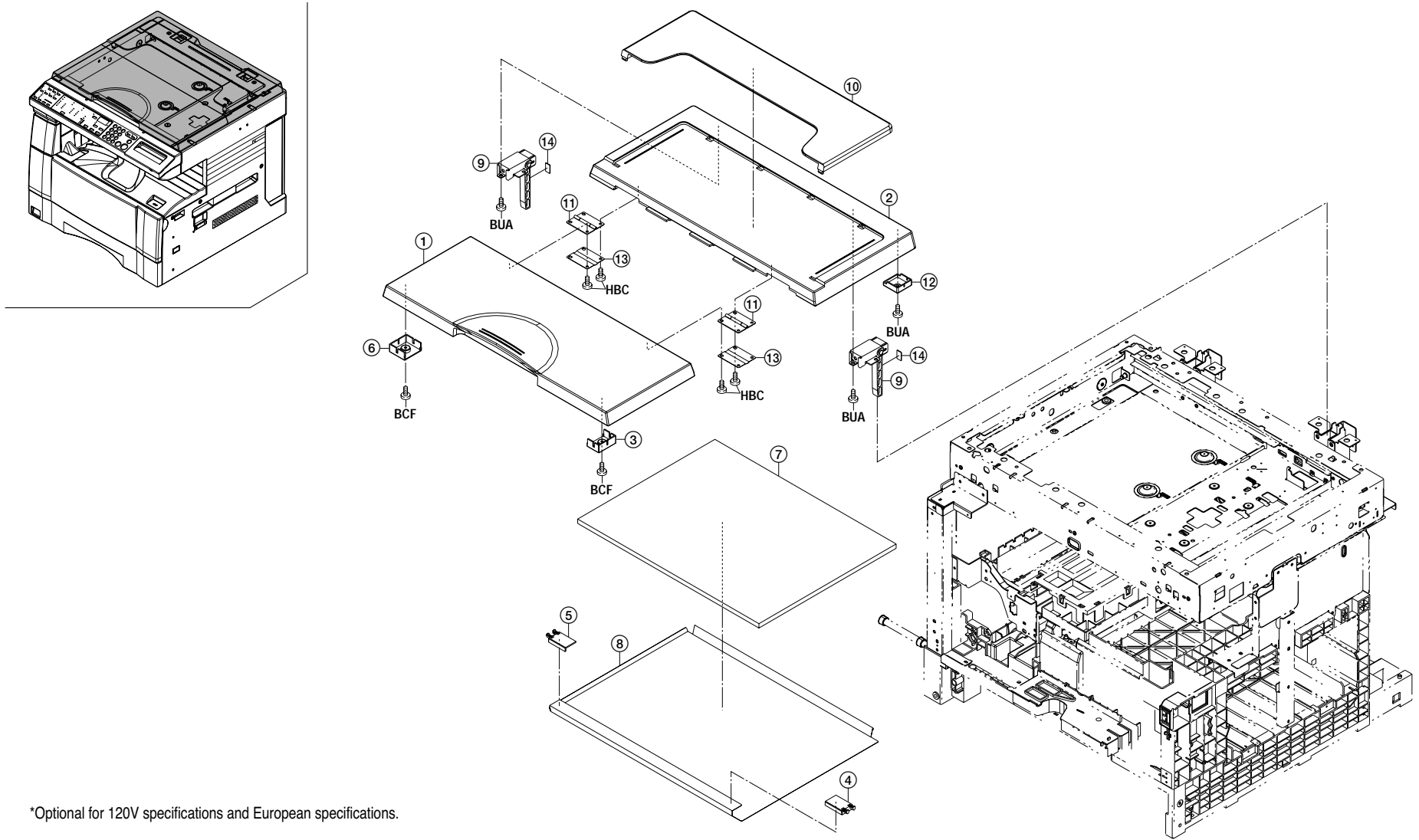
2AV/2AX

SP	Ref. No.	Part. No.	Description	Quantity		
				120V	230V	240V
●	1	2AV04110	UPPER COVER,CONVEYING	1	1	1
●	2	2AV04120	COVER,CONVEYING	1	1	1
	3	2AV04130	SHAFT,CONVEYING HANDLE	1	1	1
	4	2AV04140	FULCRUM PIN,CONVEYING UNIT	1	1	1
●	5	2AV04150	HANDLE,CONVEYING UNIT	1	1	1
●	6	2AV06070	LEFT ROLLER,REGISTRATION	1	1	1
	7	2AV16010	GUIDE,TRANSFER	1	1	1
	8	2AV16020	STATIC ELIMINATION PLATE,CONVEYING	1	1	1
	9	2AV16030	TERMINAL,TRANSFER	1	1	1
	10	2AV16070	GROUND PLATE,CONVEYING UNIT	1	1	1
●	11	2AV16080	HOLDER,REGISTRATION	2	2	2
	12	33906640	RIGHT SPRING,FEED RELEASE	1	1	1
	13	2AR16130	MOUNT BASE,TRANSFER ROLLER BUSHING	2	2	2
	14	2AR17030	FRONT BUSHING,TRANSFER ROLLER PRESSURE	1	1	1
	15	2AR17040	REAR BUSHING,TRANSFER ROLLER PRESSURE	1	1	1
	16	2AR17070	TERMINAL,TRANSFER PRESSURE	1	1	1
	17	20305090	LABEL,HIGH VOLTAGE CAUTION	1	1	1
	18	29705100	CAUTION LABEL,DRUM	1	1	1
	19	29814340	GEAR 18,DEVELOPER UNIT	1	1	1
	20	33906670	RIGHT HOOK,FEED RELEASE	2	2	2
●	21	34821100	STATIC ELIMINATOR,EJECT	1	1	1
	22	35906590	SPRING,REGISTRATION	1	1	1
●	23	60606101	BUSHING FEED BACK ROLLER	2	2	2
	24	68802160	SPRING,RETAINING	5	5	5
●	25	2AV93010	PARTS,ASS'Y LEFT REGISTRATION CLEANER,SP	1	1	1
●	26	2AV93030	PARTS,ASS'Y TRANSFER ROLLER,SP	1	1	1
	27	*2AV16100	ROLLER,TRANSFER	1	1	1
	28	*2AR17080	COLLAR,TRANSFER ROLLER	2	2	2
	29	*2AR17090	CLEANER,TRANSFER	1	1	1
	30	*2AR17120	PULLEY,TRANSFER ROLLER	2	2	2
●	31	*73210370	GEAR 18,LOOP	1	1	1
●	32	*76202270	LEFT BUSHING FULCRUM SHAFT	2	2	2
	33	2AV16120	FRONT SHEET,TRANSFER GUIDE	1	1	1
	34	2AV06260	GUIDE,REGISTRATION	2	2	2
	35	2AV06270	LEFT FRONT FILM,REGISTRATION	2	2	2

- Parts with "*" are component parts or sub-assemblies of the assembly appearing immediately above them.
- Parts with "●" indicates the Service parts.

FIG. 8 ORIGINAL HOLDER

2AV/2AX



*Optional for 120V specifications and European specifications.

FIG. 8 ORIGINAL HOLDER

2AV/2AX

SP	Ref. No.	Part. No.	Description	Quantity		
				120V	230V	240V
●	1	2AV12370	COVER A,PLATEN	1	1	1
●	2	2AV12380	COVER B,PLATEN	1	1	1
●	3	2AV12390	RIGHT BASE,MAT	1	1	1
●	4	2AV12400	RIGHT MOVING PLATE,MAT	1	1	1
●	5	2AV12410	LEFT MOVING PLATE,MAT	1	1	1
●	6	2AV12420	BASE,MAT	1	1	1
●	7	19012041	MAT,ORIGINAL HOLDER	1	1	1
●	8	19012050	SHEET,ORIGINAL HOLDER	1	1	1
●	9	19012060	HINGE,ORIGINAL HOLDER	2	2	2
●	10	60904280	ORIGINAL POCKET	1	1	1
●	11	60904310	HINGE,ORIGINAL HOLDER	2	2	2
	12	66012180	ACTUTATION PLATE,ORIGINAL DETECTION SWIT	1	1	1
	13	69312110	PLATE SPRING,ORIGINAL HOLDER	2	2	2
●	14	79904140	ORIGINAL HOLDER SPACER	2	2	2

*Optional for 120V specifications and European specifications.

- Parts with "●" are component parts or sub-assemblies of the assembly appearing immediately above them.
- Parts with "●" indicates the Service parts.

FIG. 9 OPTICAL SECTION

2AV/2AX

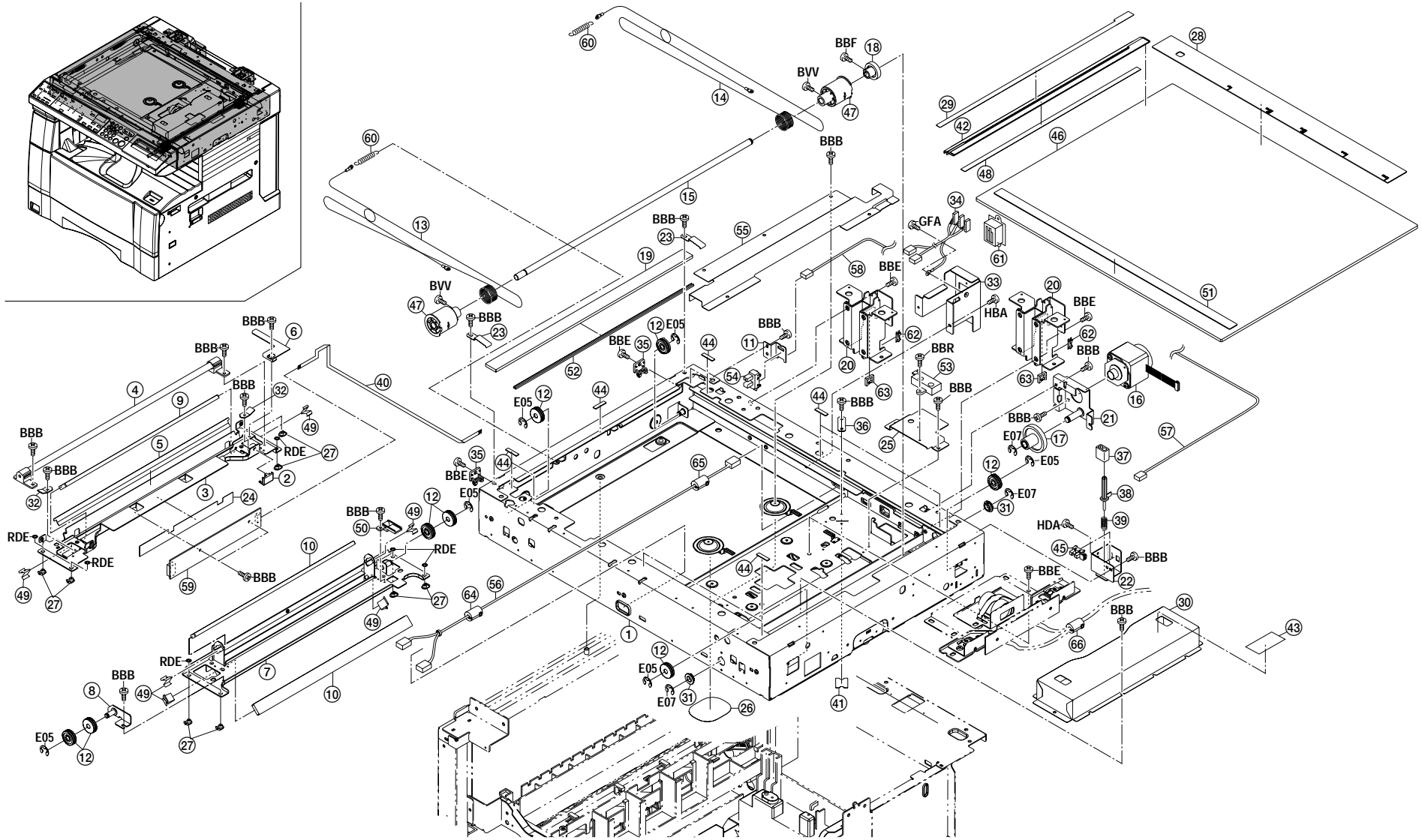


FIG. 9 OPTICAL SECTION

2AV/2AX

SP	Ref. No.	Part. No.	Description	Quantity			SP	Ref. No.	Part. No.	Description	Quantity		
				120V	230V	240V					120V	230V	240V
	1	2AV00010	SCANNER FRAME ASS'Y	1	1	1							
	2	2AV12080	GUIDE FFC1	1	1	1							
	3	2AV12090	MIRROR FRAME A	1	1	1							
●	4	2AV12100	LAMP,SCANNER	1	1	1							
	5	2AV12110	REFLECTOR,SCANNER	1	1	1							
	6	2AV12120	LIGHT SHIELD,PI	1	1	1							
	7	2AV12130	MIRROR FRAME B	1	1	1							
	8	2AV12140	ADJUSTING PLATE B,MIRROR FRAME	1	1	1							
●	9	2AV12150	MIRROR A	1	1	1							
●	10	2AV12160	MIRROR B	2	2	2							
	11	2AV12170	MOUNT,SCANNER PI	1	1	1							
	12	2AV12180	PULLY,SCANNER	8	8	8							
●	13	2AV12190	FRONT WIRE,SCANNER	1	1	1							
●	14	2AV12200	REAR WIRE,SCANNER	1	1	1							
	15	2AV12210	SHAFT,SCANNER DRIVE	1	1	1							
●	16	2AV12220	MOTOR,SCANNER	1	1	1							
	17	2AV12230	GEAR 44/16	1	1	1							
	18	2AV12240	GEAR 26	1	1	1							
●	19	2AV12250	CONTACT GLASS,ADF	1	1	1							
	20	2AV12260	MOUNT BASE,DF HINGE	2	2	2							
	21	2AV12270	MOUNT,SCANNER MOTOR	1	1	1							
	22	2AV12290	MOUNT,RELEASE SWITCH	1	1	1							
	23	2AV12300	HOLDER,ADF CONTACT GLASS	2	2	2							
	24	2AV12320	FILM A,MIRROR FRAME	1	1	1							
	25	2AV12340	MOUNT,ORIGINAL DETECTION SENSOR	1	1	1							
	26	2AV12430	LOWER SEAL,SCANNER	2	2	2							
●	27	2AV12450	SLIDER,SCANNER	8	8	8							
●	28	2AV12460	REAR ORIGINAL SIZE INDICATOR(METRIC)		1	1							
●	28	2AV12470	REAR ORIGINAL SIZE INDICATOR(INCH)	1									
●	29	2AV12480	LABEL,ORIGINAL SIZE INDICATOR(METRIC)		1	1							
●	29	2AV12490	LABEL,ORIGINAL SIZE INDICATOR(INCH)	1									
	30	2AV12520	COVER,ISU	1	1	1							
	31	72914480	REAR BUSHING,DEVELOPING ROLLER (B)	2	2	2							
	32	2AV12350	STOPPER,WIRE	2	2	2							
	33	2AV26230	MOUNT,DF CONNECTOR	1	1	1							
	34	2AV27050	WIRE,ADF(KM-1530)	1	1	1							
	34	2AX27020	WIRE,RADF(KM-2030)	1	1	1							
	35	18512340	GUIDE,SCANNER WIRE	2	2	2							
	36	2AC12300	HOLDER FFC	1	1	1							
	37	2AC12360	GUIDE,RELEASE SWITCH	1	1	1							
●	38	2AC12370	SWITCH,RELEASE DETECTION	1	1	1							
	39	2AC12380	SPRING,RELEASE SWITCH	1	1	1							
	40	2AC27800	WIRE,SCANNER INVERTER	1	1	1							
	41	2AR12200	FILM,FFC	1	1	1							
●	42	2A305070	LEFT ORIGINAL SIZE INDICATOR	1	1	1							
●	43	2A105180	LABEL,CAUTION CONTACT GLASS	1	1	1							
●	44	29812291	CUSHION,CONTACT GLASS	9	9	9							
●	45	35327400	SWITCH,FEED	1	1	1							
●	46	35912010	CONTACT GLASS	1	1	1							
●	47	35912060	PULLEY,SCANNER DRUM	2	2	2							
	48	35912200	STANDARD PLATE,SHADING	1	1	1							
	49	35912210	SPRING,MIRROR HOLDER	6	6	6							
	50	35912360	GUIDE FFC2	1	1	1							
●	51	35912490	FRONT ORIGINAL SIZE INDICATOR	1	1	1							
●	52	35912531	SPONGE,ORIGINAL SIZE INDICATOR	1	1	1							
	53	35927290	SENSOR,ORIGINAL DETECTION(KM-1530)	1									
	53	35927290	SENSOR,ORIGINAL DETECTION(KM-2030)	1	1	1							
●	54	72127100	PI SWITCH,OPTICAL SECTION	1	1	1							
	55	2AV12310	COVER,OPERATION UNIT WIRE	1	1	1							
	56	2AV27130	WIRE,OPERATION UNIT(KM-1530)	1	1	1							
	56	2AX27050	WIRE,OPERATION UNIT(KM-2030)	1									
	57	2AV27140	WIRE,SWITCH JUNCTION	1	1	1							
	58	2AV27150	WIRE,SCANNER HOME	1	1	1							
●	59	2AV28080	INVERTER PCB	1	1	1							
	60	72112520	TENSION SPRING,SCANNER WIRE	2	2	2							
	61	J0388460	RECEPTACLE,52918-4615(MOLEX)	1	1	1							
	62	M2104210	EDGING,EDS-2	2	2	2							
	63	M2104220	EDGING,EDS-1717U	2	2	2							
	64	2AR27720	CORE 8-18X13(KM-1530)	1	1	1							
	65	2AR27720	CORE 8-18X13(KM-2030)	1	1	1							
	66	2AR27720	CORE 8-18X13	1	1	1							

- Parts with "●" are component parts or sub-assemblies of the assembly appearing immediately above them.
- Parts with "●" indicates the Service parts.

FIG. 10 LASER SCANNER UNIT

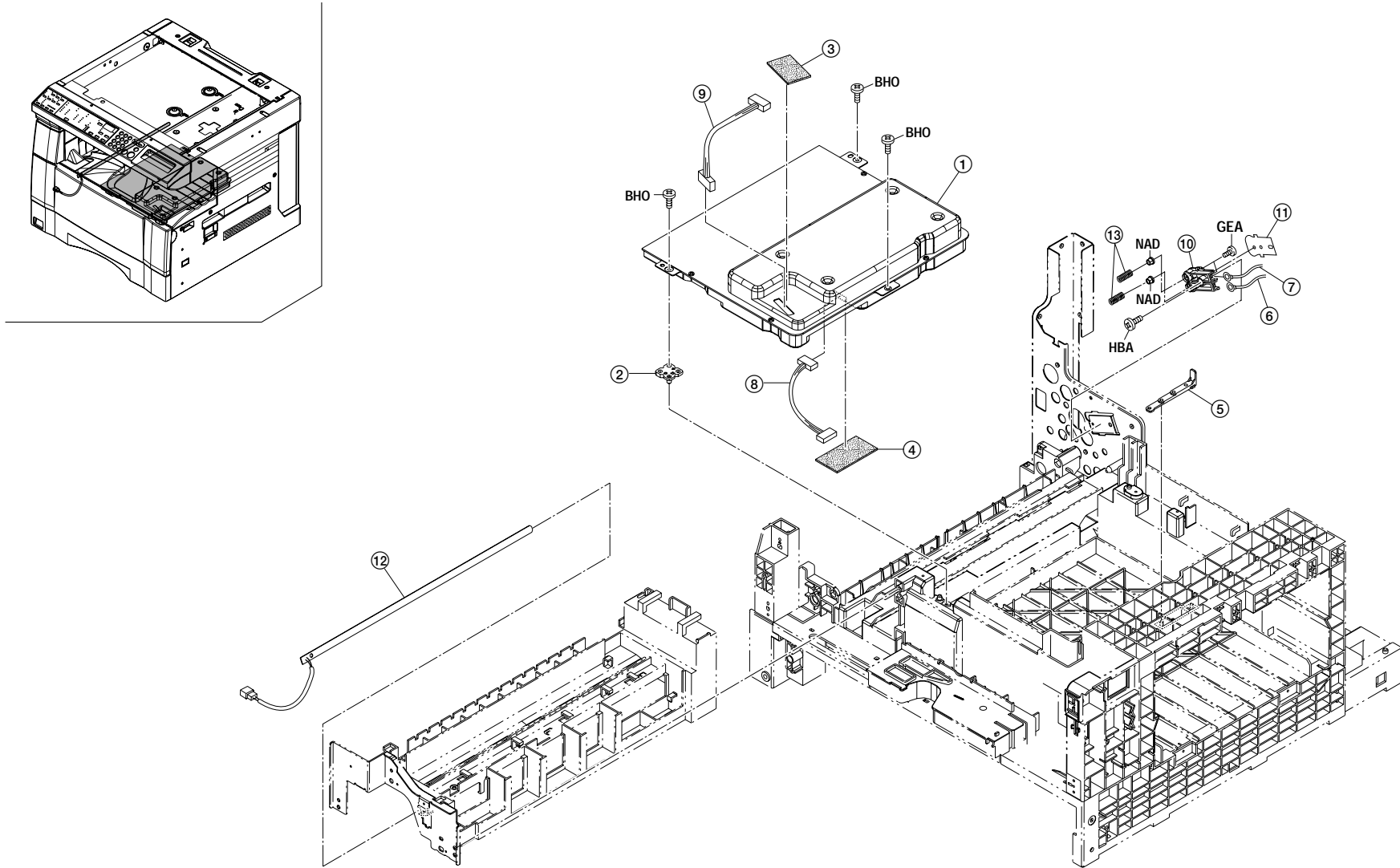


FIG. 10 LASER SCANNER UNIT

2AV/2AX

SP	Ref. No.	Part. No.	Description	Quantity		
				120V	230V	240V
●	1	2AV13010	UNIT,LSU	1	1	1
	2	2AV13020	SPACER,LSU	1	1	1
	3	2AV13030	SPONGE,LASER DIODE	1	1	1
	4	2AV13040	SPONGE,POLYGON	1	1	1
	5	2AV13050	RIGHT SPACER,LSU	1	1	1
	6	2AV27090	WIRE,MAIN HIGH VOLTAGE	1	1	1
	7	2AV27100	WIRE,GRID	1	1	1
	8	2AV27310	JUNCTION WIRING,POLYGON	1	1	1
	9	2AV27320	JUNCTION WIRING,LASER DIODE	1	1	1
	10	2AR10060	TERMINAL BASE,MAIN CHARGER	1	1	1
	11	2AR10070	SHEET,MAIN CHARGER TERMINAL BASE	1	1	1
●	12	2AR27031	LAMP,CLEANING LAMP	1	1	1
	13	63516160	SPRING,TRANSFORMER TERMINAL	2	2	2

- Parts with "●" are component parts or sub-assemblies of the assembly appearing immediately above them.
- Parts with "●" indicates the Service parts.

FIG. 11 IMAGING UNIT

SP	Ref. No.	Part. No.	Description	Quantity		
				120V	230V	240V
●	1	2AV82010	SET,DRUM	1	1	1
	2	2AV09010	FRONT FRAME,IMAGE FORMATION	1	1	1
	3	2AV09020	REAR FRAME,IMAGE FORMATION	1	1	1
	4	2AV09030	FRONT COVER,IMAGE FORMATION	1	1	1
	5	2AV16040	RIGHT GUIDE,TRANSFER	1	1	1
●	6	2AV18030	BLADE,CLEANING	1	1	1
	7	2AV18050	SPRING,BLADE	2	2	2
	8	2AV27080	WIRE,IMAGE FORMATION	1	1	1
●	9	19514270	REAR BUSHING,AGITATION	1	1	1
	10	72919050	GEAR 12/15,RECYCLE SECTION	1	1	1
	11	2AV18010	HOUSING,DISPOSAL	1	1	1
●	12	2AR93420	MAIN CHARGER ASS'Y A	1	1	1
	13	*2AR10020	GRID,SHIELD	1	1	1
	14	*2AR10030	TERMINAL,MAIN CHARGER	1	1	1
	15	*2AR10040	FRONT LID,MAIN CHARGER	1	1	1
	16	*2AR10050	REAR LID,MAIN CHARGER	1	1	1
	17	*2AR10090	SEAL,MAIN CHARGER	3	3	3
	18	*2AR10130	SLIDER,MAIN CHARGER CLEANER	1	1	1
	19	*2AR10160	WIRE,MAIN CHARGER	1	1	1
	20	*48527200	SPRING,CHARGER	1	1	1
	21	*33910230	PIN CHARGER	1	1	1
	22	2AR05160	LABEL,IMAGE FORMATION	1	1	1
	23	2AR08030	SHAFT,DRUM	1	1	1
	24	2AR09040	REAR BUSHING,DRUM SHAFT	1	1	1
	25	2AR09060	FILM,LIGHT SHIELD	1	1	1
	26	2AR09140	FRONT BUSHING,DEVELOPING	1	1	1
	27	2AR09150	REAR BUSHING,DEVELOPING	1	1	1
	28	2AR09170	RAIL MAIN CHARGER A	1	1	1
	29	2AR09200	MOUNT M3A	2	2	2
	30	2AR09210	MOUNT M3B	8	8	8
	31	2AR09220	MOUNT M3C	2	2	2
	32	2AR09230	FRONT BUSHING,DRUM SHAFT	1	1	1
	33	2AR09240	MOUNT M3D	1	1	1
	34	2AR14010	MAGNET,DEVELOPING	1	1	1
	35	2AR14030	PADDLE,DEVELOPING	7	7	7
	36	2AR14040	LEFT SPIRAL,DEVELOPING	1	1	1
	37	2AR14050	RIGHT SPIRAL,DEVELOPING	1	1	1
	38	2AR14091	FRONT BUSHING,MAGNET ROLLER	1	1	1
	39	2AR14100	RETAINER,MAGNET ROLLER	1	1	1
	40	2AR14110	GEAR 16,MAGNET ROLLER	1	1	1

2AV/2AX

SP	Ref. No.	Part. No.	Description	Quantity		
				120V	230V	240V
	41	2AR14130	FRONT SPONGE B,LID DEVELOPING	1	1	1
	42	2AR14140	FRONT SPONGE C,LID DEVELOPING	1	1	1
	43	2AR14160	SPACER,TONER SENSOR	1	1	1
	44	2AR14170	FRONT LID,DEVELOPING	1	1	1
	45	2AR14200	FRONT SPONGE,DEVELOPING	1	1	1
	46	2AR14211	RIGHT SPONGE,DEVELOPING	1	1	1
	47	2AR14240	SEAL,MAGNET ROLLER	2	2	2
●	48	2AR14250	SEAL,DEVELOPING	2	2	2
	49	2AR14290	RIGHT FILM,DEVELOPING	1	1	1
	50	2AR14300	LOWER FILM,DEVELOPING	3	3	3
	51	2AR14310	GEAR 19,PADDLE	1	1	1
	52	2AR14330	LEFT SPONGE,DEVELOPING	1	1	1
	53	2AR14340	SHAFT,PADDLE	1	1	1
	54	2AR14350	FRONT SPONGE E,LID DEVELOPING	1	1	1
	55	2AR14380	REAR BUSHING,AGITATION	3	3	3
	56	2AR14411	RIGHT FRONT SPONGE,DEVELOPING	1	1	1
	57	2AR14490	FRONT SPONGE F,LID DEVELOPING	1	1	1
	58	2AR14500	FRONT SPONGE G,LID DEVELOPING	1	1	1
	59	2AR14510	FRONT SPONGE H,LID DEVELOPING	1	1	1
	60	2AR14520	FRONT SPONGE I,LID DEVELOPING	1	1	1
	61	2AR14540	LOWER FRONT FILM,LID DEVELOPING	1	1	1
	62	2AR14551	HOUSING A,DEVELOPING	1	1	1
	63	2AR14560	MOUNT A,DOCTOR BLADE	1	1	1
	64	2AR14640	REAR SPONGE,LID	1	1	1
	65	2AR14580	DOCTOR BLADE A,DEVELOPING	1	1	1
	66	2AR14590	UPPER LID A,DEVELOPING	1	1	1
	67	2AR14600	UPPER SPONGE A,LID DEVELOPING	1	1	1
	68	2AR14610	SPONGE,DEVELOPING HOUSING	2	2	2
	69	2AR14620	FRONT SPONGE,DEVELOPING HOUSING	1	1	1
●	70	2AR68580	COVER A DOCTOR BLADE ASS'Y	1	1	1
	71	*2AR14570	COVER A,DOCTOR BLADE	1	1	1
	72	*2AR14650	SPONGE,COVER DOCTOR BLADE	1	1	1
	73	2AR14660	FILM A,DEVELOPING	2	2	2
	74	2AR14670	FILM A,COVER DOCTOR BLADE	1	1	1
	75	2AR18050	SPIRAL,CLEANING	1	1	1
	76	2AR18080	SPACER,DRUM	1	1	1
	77	2AR18090	SHAFT,THRUST	1	1	1
	78	2AR18100	GEAR 21,THRUST	1	1	1
	79	2AR18110	GEAR 17,SPIRAL	1	1	1
	80	2AR18120	BUSHING,THRUST	2	2	2

- Parts with "●" are component parts or sub-assemblies of the assembly appearing immediately above them.
- Parts with "●" indicates the Service parts.

FIG. 11 IMAGE UNIT

2AV/2AX

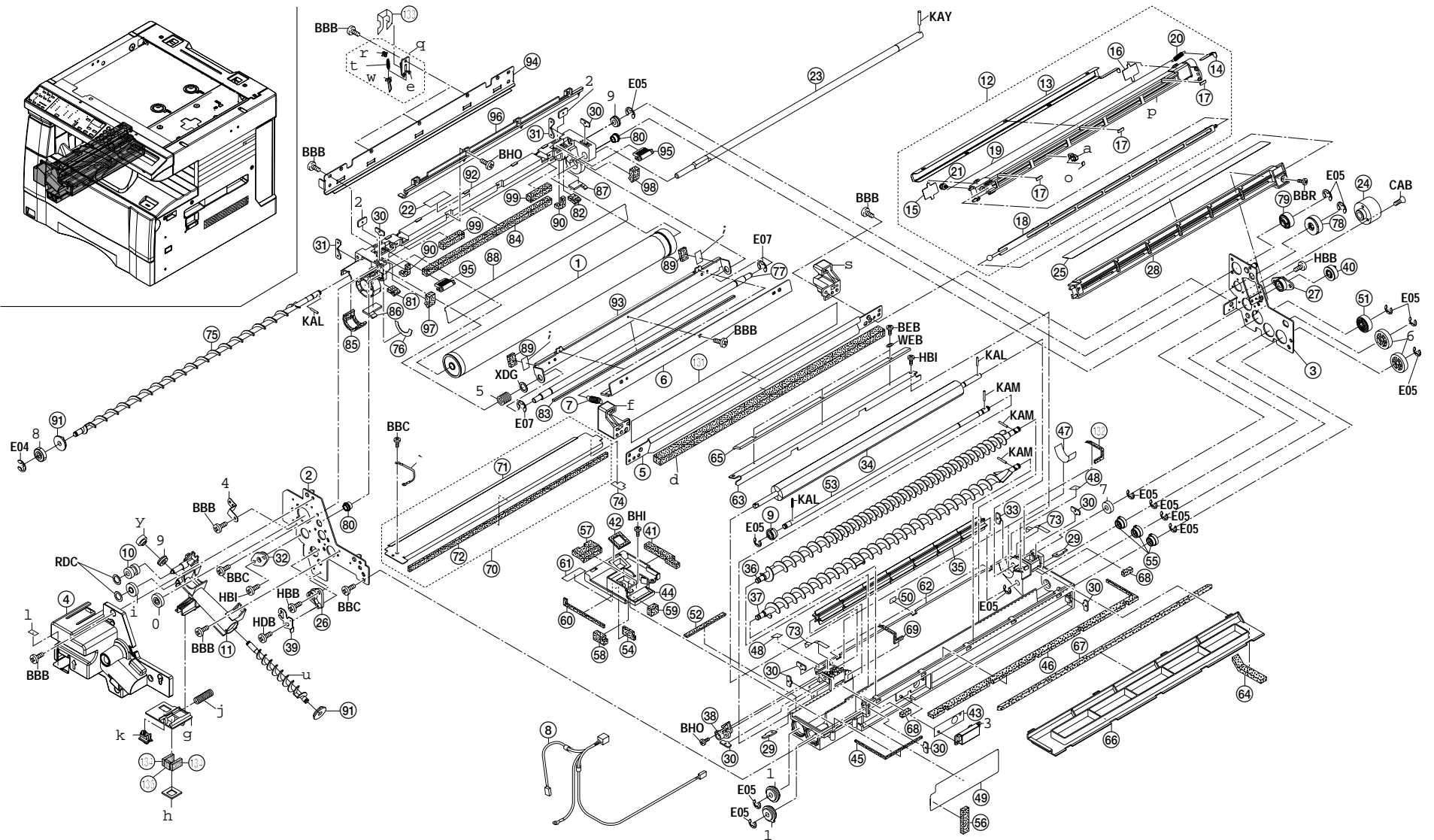


FIG. 11 IMAGE UNIT

SP	Ref. No.	Part. No.	Description	Quantity		
				120V	230V	240V
	81	2AR18151	FRONT SPONGE A,CLEANING	1	1	1
	82	2AR18160	REAR SPONGE A,CLEANING	1	1	1
	83	2AR18170	INNER SPONGE,CLEANING	1	1	1
	84	2AR18191	LOWER SPONGE,CLEANING	1	1	1
	85	2AR18200	FRONT SPONGE,CLEANING	1	1	1
	86	2AR18211	FRONT SEAL A,CLEANING	1	1	1
	87	2AR18221	REAR SEAL A,CLEANING	1	1	1
	88	2AV18070	INNER FILM,CLEANING	1	1	1
	89	2AR18341	SPONGE,MOUNT BLADE	2	2	2
	90	2AR18371	SPONGE,CLEANING	2	2	2
	91	2AR18380	BUSHING,CLEANING	2	2	2
	92	2AR18400	HOUSING A,CLEANING	1	1	1
	93	2AR18410	MOUNT A,BLADE	1	1	1
●	94	2AR93410	LOWER SEAL A,CLEANING	1	1	1
	95	2AR18430	LEVER A,PRESSURE RELEASE	2	2	2
	96	2AR18450	GUIDE, SPIRAL	1	1	1
	97	2AR18460	FRONT SPONGE C,CLEANING	1	1	1
	98	2AR18470	REAR SPONGE C,CLEANING	1	1	1
	99	2AR18480	LOWER SPONGE A,CLEANING	2	2	2
	100	2AR27620	DIODE,DEVELOPING SEAL	1	1	1
●	101	49028113	BUSHING 6-19,DEV.UNIT	2	2	2
	102	33302080	MOUNT M3	2	2	2
●	103	33914190	TONER SENSOR	1	1	1
	104	34909050	FRONT GROUND PLATE,DRUM DRIVE	1	1	1
	105	34918200	SPRING,THRUST	1	1	1
	106	34922570	GEAR 23,DEVELOPING	2	2	2
	107	35914820	BEARING,DEVELOPING	1	1	1
	108	63814060	GEAR 20,AGITATION	1	1	1
●	109	63818250	REAR BUSHING,TONER DISPOSAL ROLLER	2	2	2
	110	72320210	LOWER GEAR, EJECT IDLE	1	1	1
●	111	2AR00400	SEPARATION CLAW ASS'Y	3	3	3
	112	*2AR18240	CLAW,SEPARATION	3	3	3
	113	*2AR18250	MOUNT BASE,CLAW SEPARATION	3	3	3
	114	*2AR18260	PULLEY,CLAW SEPARATION	3	3	3
	115	*2AR18280	SPRING,CLAW SEPARATION	3	3	3
●	116	19518240	GEAR 12,RECYCLE	1	1	1
	117	2AR18070	SPIRAL,RECYCLE	1	1	1
	118	35322020	GEAR 20,PAPER FEED DRIVE	1	1	1
	119	2AR10150	PAD,MAIN CHARGER CLEANER	1	1	1
	120	2AR10120	HOUSING A,MAIN CHARGER	1	1	1

2AV/2AX

SP	Ref. No.	Part. No.	Description	Quantity		
				120V	230V	240V
	121	2AR10140	HOLDER,MAIN CHARGER CLEANER	1	1	1
	122	2AV16060	REAR POSITIONING PLATE,TRANSFER ROLLER	1	1	1
	123	2AV16130	RIGHT SPONGE,GUIDE	1	1	1
	124	2AV16050	FRONT POSITIONING PLATE,TRANSFER ROLLER	1	1	1
	125	2AV18020	SHUTTER,DISPOSAL	1	1	1
●	126	2AV18040	SEAL,SHUTTER	1	1	1
	127	3AH07060	SPRING,BYPASS STOPPER	1	1	1
●	128	35927420	SWITCH,SIZE	1	1	1
	129	63505130	LABEL,RAIL	1	1	1
	130	2AV18060	FILM,MOUNT BLADE	2	2	2
	131	2AV16110	FRONT FILM,TRANSFER GUIDE	1	1	1
	132	2AR14630	REAR SPONGE,DEVELOPING HOUSING	1	1	1
	133	2AV18080	GUIDE,SEPARATION	3	3	3
	134	2AV18090	SEAL B,SHUTTER	2	2	2
	135	2AV18100	SPONGE,SHUTTER	1	1	1

- Parts with "*" are component parts or sub-assemblies of the assembly appearing immediately above them.
- Parts with "●" indicates the Service parts.

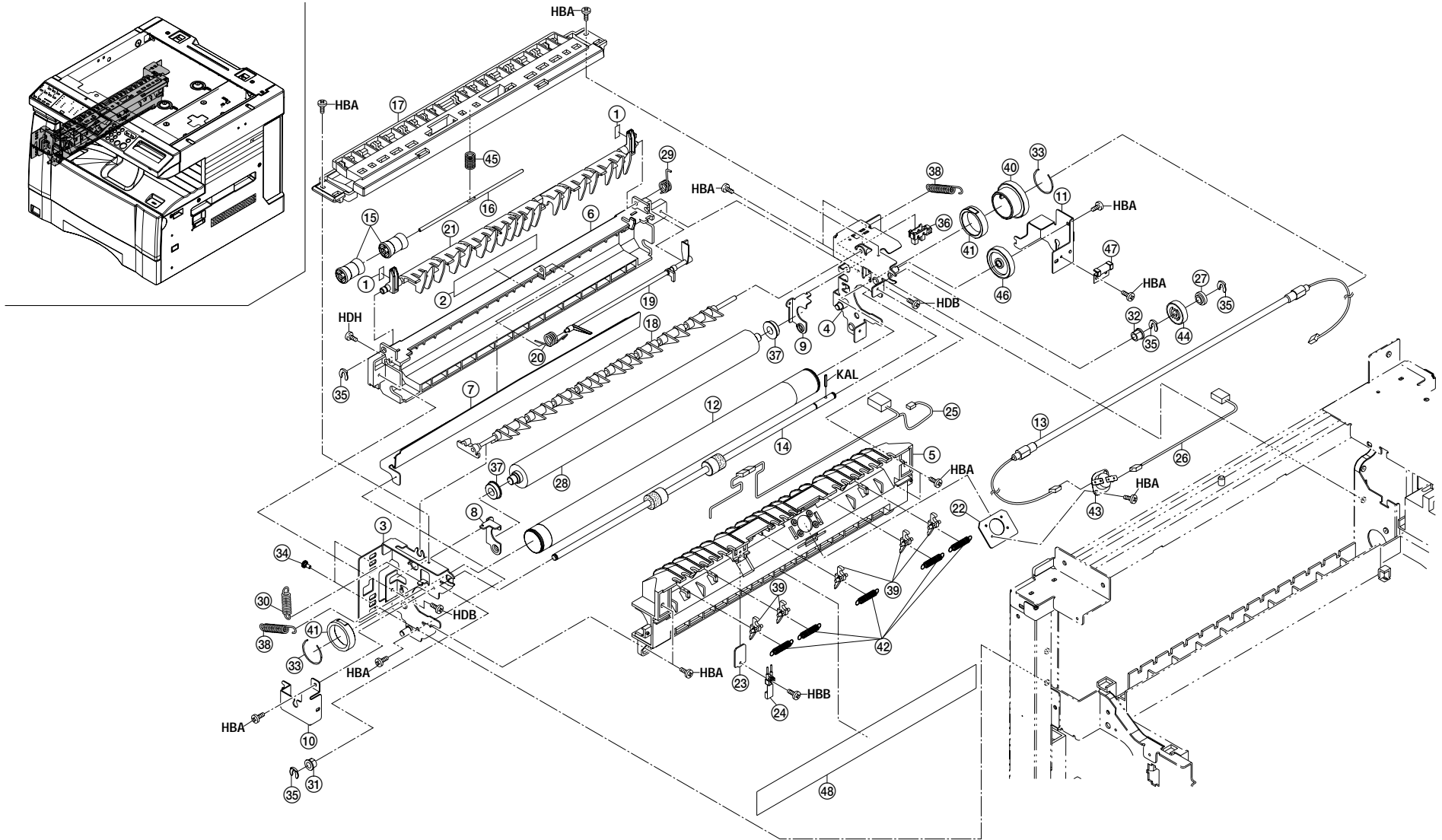


FIG. 12 FIXING SECTION

2AV/2AX

SP	Ref. No.	Part. No.	Description	Quantity		
				120V	230V	240V
	1	2AV05130	LEFT LABEL, GUIDE EJECT	2	2	2
	2	2AV05170	LABEL, HIGH TEMPERATURE CAUTION	1	1	1
	3	2AV20010	FRONT FRAME, FIXING	1	1	1
	4	2AV20020	REAR FRAME, FIXING	1	1	1
	5	2AV20030	UPPER HOUSING, FIXING	1	1	1
	6	2AV20040	LOWER HOUSING, FIXING	1	1	1
	7	2AV20050	FRONT GUIDE, FIXING	1	1	1
	8	2AV20060	FRONT PRESSING PLATE, FIXING	1	1	1
	9	2AV20070	REAR PRESSING PLATE, FIXING	1	1	1
	10	2AV20080	FRONT MOUNT, FIXING HEATER	1	1	1
	11	2AV20090	REAR MOUNT, FIXING HEATER	1	1	1
●	12	2AV20100	ROLLER, HEAT	1	1	1
●	13	2AV20130	HEATER 120, FIXING	1		
●	13	2AV20140	HEATER 230, FIXING		1	1
●	14	2AV20150	ROLLER, EJECT	1	1	1
●	15	2AV20160	PULLEY, EJECT	2	2	2
	16	2AV20170	SHAFT, EJECT PULLEY	1	1	1
	17	2AV20180	GUIDE, EJECT	1	1	1
	18	2AV20190	GUIDE, FEED SHIFT	1	1	1
●	19	2AV20200	ACTUATOR, EJECT SWITCH	1	1	1
●	20	2AV20210	SPRING, EJECT ACTUATOR	1	1	1
	21	2AV20220	LEFT GUIDE, EJECT	1	1	1
	22	2AV20230	MOUNT, THERMOSTAT	1	1	1
	23	2AV20240	MOUNT, THERMISTOR	1	1	1
●	24	2AV20250	THERMISTOR, FIXING	1	1	1
	25	2AV27060	WIRE, FIXING	1	1	1
	26	2AV27120	JUNCTION WIRING, THERMOSTAT	1	1	1
	27	18314060	COLLAR, PARTITION JOINT	1	1	1
●	28	2AB93040	PARTS, ROLLER PRESSURE, SP	1	1	1
●	29	28220071	SPRING, FIXING UNIT CLAW	1	1	1
	30	48528216	SPRING, PAPER GUIDE	1	1	1
●	31	29717230	BUSHING 6, FEED BACK	1	1	1
●	32	29806810	BUSHING, 6 REGISTRATION	1	1	1
	33	29820190	CRESCENTIC STOPPER	2	2	2
	34	2AV20270	PIN, FIXING RETAINING(M3)	2	2	2
	35	34806150	STOPPER 5	4	4	4
●	36	35327400	SWITCH, FEED	1	1	1
●	37	35920130	BEARING, PRESSURE	2	2	2
●	38	35920140	SPRING, PRESSURE	2	2	2
●	39	35920150	CLAW, SEPARATION	5	5	5

SP	Ref. No.	Part. No.	Description	Quantity		
				120V	230V	240V
●	40	35920240	GEAR 35, HEAT ROLLER	1	1	1
●	41	35920350	BUSHING, HEAT ROLLER	2	2	2
	42	63706260	SPRING, STACK BYPASS GEAR	5	5	5
●	43	63720211	THERMOSTAT, FIXING	1	1	1
●	44	66022190	GEAR, 21 DEVELOPING	1	1	1
	45	68814720	SPRING B, DOCTOR BLADE	1	1	1
●	46	73922250	IDLE GEAR A, PF SECTION	1	1	1
	47	2AV20260	HOLDER, FIXING WIRE	1	1	1
	48	2AV20290	RIGHT SHEET, FIXING	1	1	1

- Parts with "●" are component parts or sub-assemblies of the assembly appearing immediately above them.
- Parts with "●" indicates the Service parts.

FIG. 13 DRIVING SECTION

2AV/2AX

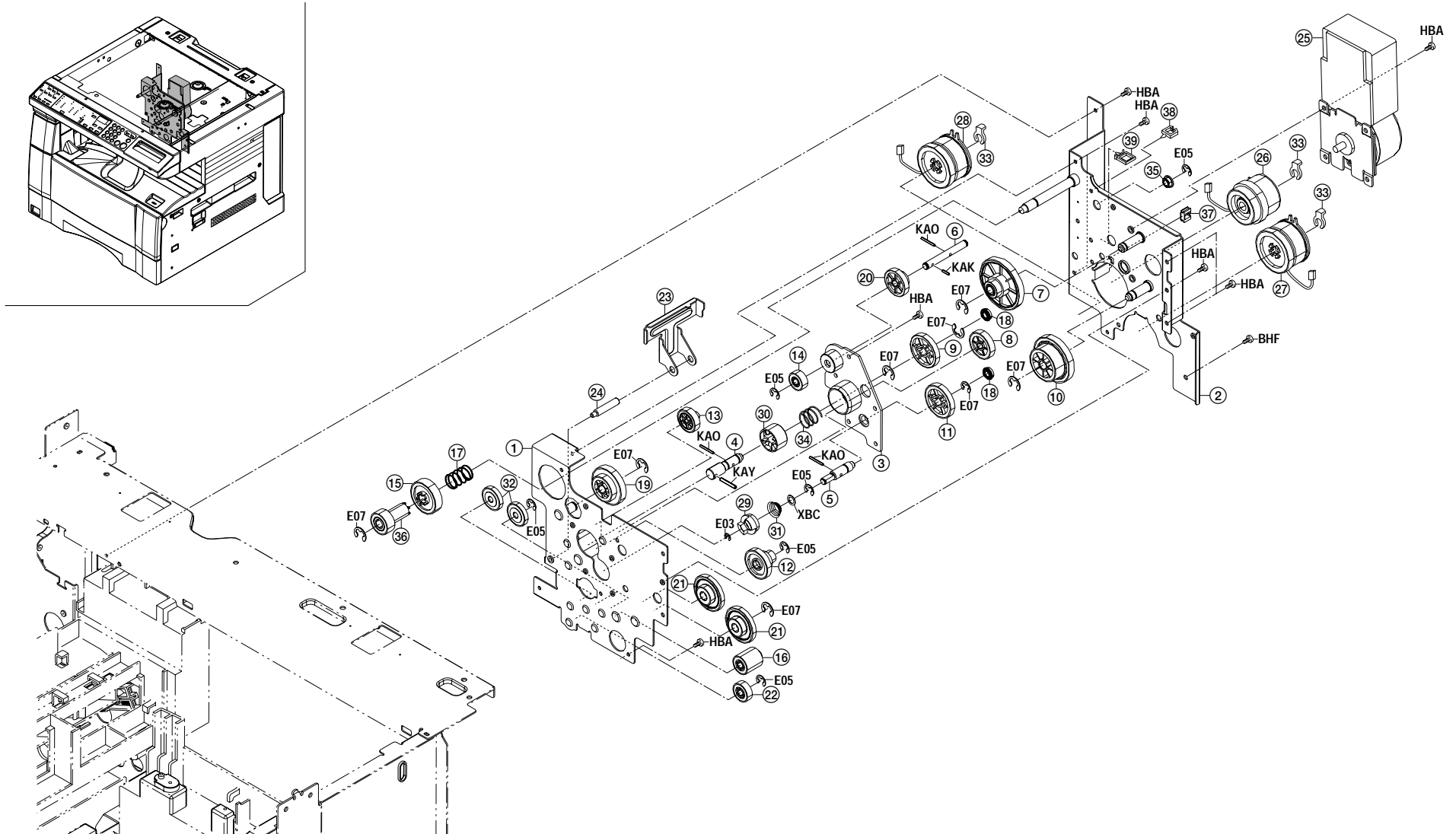


FIG. 13 DRIVING SECTION

2AV/2AX

SP	Ref. No.	Part. No.	Description	Quantity		
				120V	230V	240V
	1	2AV22010	FRONT FRAME,DRIVE UNIT	1	1	1
	2	2AV22020	REAR FRAME,DRIVE UNIT	1	1	1
	3	2AV22030	POSITIONING PLATE,DRUM	1	1	1
	4	2AV22040	SHAFT,COUPLING	1	1	1
	5	2AV22050	SHAFT,DEVELOPING DRIVE	1	1	1
	6	2AV22060	SHAFT,CLEANING DRIVE	1	1	1
	7	2AV22320	GEAR A,58/30	1	1	1
	8	2AV22330	GEAR A,48/27	1	1	1
	9	2AV22340	GEAR A,60 DRUM	1	1	1
	10	2AV22100	GEAR,52/30	1	1	1
	11	2AV22110	GEAR,30 DEVELOPING	1	1	1
	12	2AV22120	GEAR,26/14	1	1	1
	13	2AV22130	GEAR,20	2	2	2
	14	2AV22160	GEAR,15CL	1	1	1
	15	2AV22170	GEAR,29	1	1	1
	16	2AV22200	GEAR,16	1	1	1
	17	2AV22230	SPRING,FIXING JOINT	1	1	1
●	18	68822330	BEARING,DRIVE	2	2	2
	19	2AV22280	GEAR,34/23	1	1	1
	20	2AV22290	GEAR,24	1	1	1
	21	2AV22300	GEAR,32/16	2	2	2
	22	2AV22310	GEAR,16 IDLE	1	1	1
	23	2AV26030	LEFT WORK PLATE,SAFETY SWITCH	1	1	1
	24	2AV26270	LEFT PIN,SAFETY SWITCH	1	1	1
●	25	2AV27190	MOTOR,PAPER FEED	1	1	1
●	26	2AV27250	CLUTCH,REGISTRATION	1	1	1
●	27	2AV27330	CLUTCH,PAPER FEED	1	1	1
●	28	2AV27340	CLUTCH,BYPASS	1	1	1
●	29	18522430	COUPLER,TONER SUPPLY	1	1	1
	30	2AR22030	COUPLING,DRUM	1	1	1
	31	2AR22570	SPRING,DEVELOPING DRIVE	1	1	1
	32	45729401	GEAR 20,S,B	3	3	3
	33	34806150	STOPPER 5	3	3	3
	34	34922590	SPRING,DRUM DRIVE	1	1	1
●	35	73210450	BUSH, 6	1	1	1
	36	2AV22180	GEAR 19,FIXING	1	1	1
	37	M2104350	EDGING,EDS-0607M(KITAGAWA)	1	1	1
	38	M2105730	MINIATURE CLAMP,UAMS-07-0	1	1	1
	39	M2109010	WIRE SADDLE,WS-2NS	1	1	1

- Parts with "●" are component parts or sub-assemblies of the assembly appearing immediately above them.
- Parts with "●" indicates the Service parts.

FIG. 14 ELECTRICAL COMPONENTS

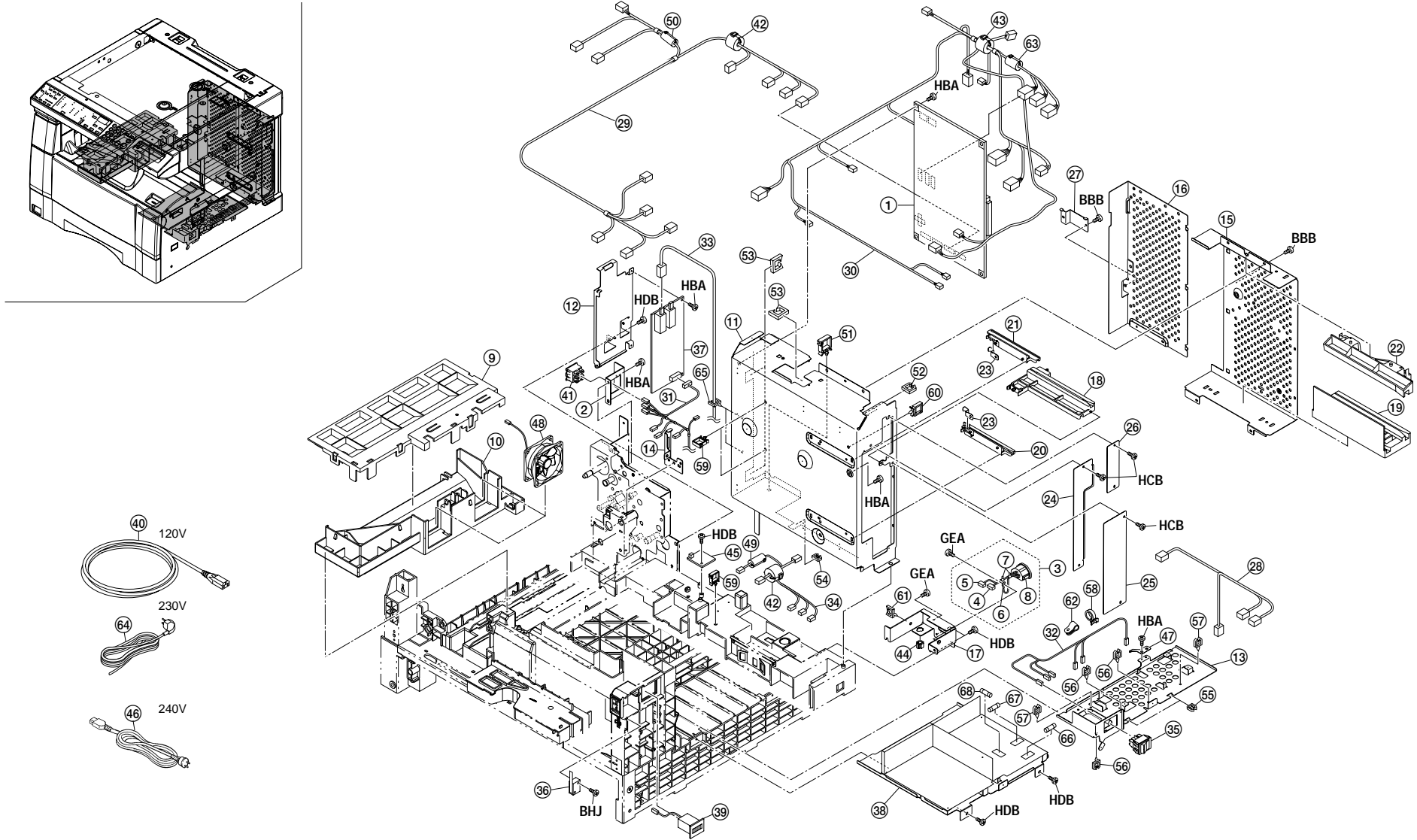


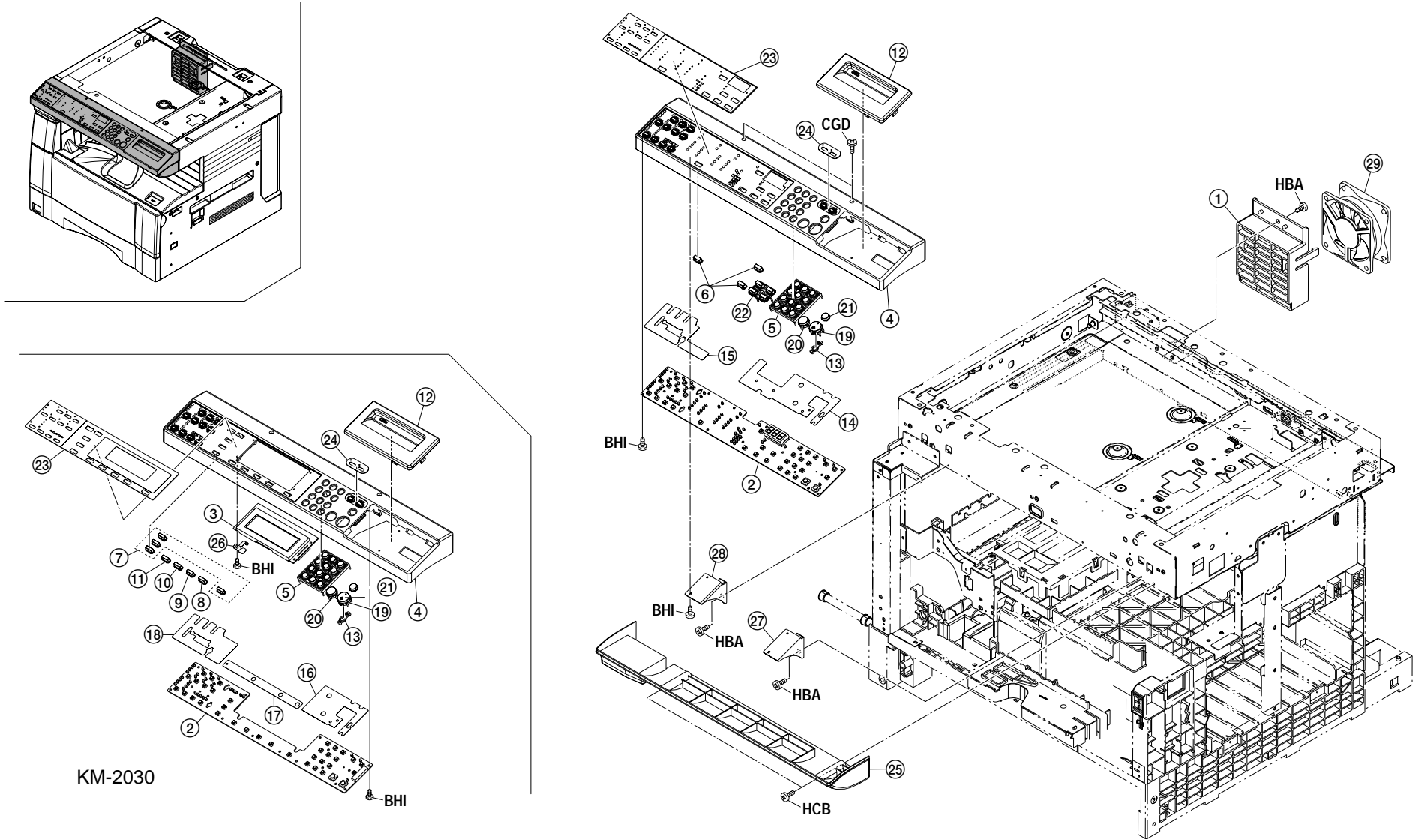
FIG. 14 ELECTRICAL COMPONENTS

SP	Ref. No.	Part. No.	Description	Quantity		
				120V	230V	240V
●	1	2AV01011	MAIN PCB ASS'Y(KM-1530)	1	1	1
●	1	2AX01010	MAIN PCB ASS'Y(KM-2030)	1	1	1
	2	2AV26040	LEFT MOUNT,SAFETY SWITCH	1	1	1
●	3	2AV01030	POWER INLET ASS'Y	1	1	1
	4	•J0074010	POSITIVE CONNECTOR,#250,172076-1	2	2	2
	5	•J0074910	POSITIVE CONTACTOR,#250,170334-1	2	2	2
	6	•L0023070	ROUND TYPE TERMINAL,173636-1	1	1	1
	7	•M2407010	BINDING BAND SK,SKB-100	2	2	2
	8	•2AV27350	INLET,POWER SOURCE	1	1	1
	9	2AV23010	UPPER DUCT,COOLING	1	1	1
	10	2AV23020	LOWER DUCT,COOLING	1	1	1
	11	2AV26010	FRAME,SHIELD	1	1	1
	12	2AV26020	MOUNT,HIGH VOLTAGE PCB	1	1	1
	13	2AV26060	MOUNT,SUB POWER SOURCE	1	1	1
	14	2AV26080	MOUNT,BYPASS WIRE	1	1	1
	15	2AV26090	RIGHT COVER,SHIELD	1	1	1
	16	2AV26100	LEFT COVER,SHIELD	1	1	1
	17	2AV26110	MOUNT,INLET	1	1	1
	18	2AV26130	GUIDE A,PCB	1	1	1
	19	2AV26140	GUIDE B,PCB	1	1	1
	20	2AV26150	GUIDE C,PCB(KM-1530)	1	1	1
	21	2AV26160	GUIDE D,PCB(KM-1530)	1	1	1
	22	2AX26010	GUIDE E,PCB(KM-2030)	1		
	23	2AV26190	GROUND PLATE A,PCB(KM-1530)	2	2	2
	24	2AV26210	UPPER LID,SHIELD	1	1	1
	25	2AV26220	LOWER LID,SHIELD	1	1	1
	26	2AV26240	READ LID,SHIELD	1	1	1
	27	2AV26260	GROUND PLATE,HIGH VOLTAGE	1	1	1
●	28	2AV27011	WIRE,POWER SOURCE PRIMARY	1	1	1
	29	2AV27020	WIRE,POWER SOURCE SECONDARY(KM-1530)	1	1	1
	29	2AX27010	WIRE,POWER SOURCE SECONDARY(KM-2030)	1	1	1
	30	2AV27030	UPPER WIRE(KM-1530)	1	1	1
	30	2AX27030	UPPER WIRE(KM-2030)	1	1	1
	31	2AV27040	LOWER WIRE	1	1	1
	32	2AV27070	WIRE,MAIN SWITCH(KM-1530)	1	1	1
	32	2AX27040	WIRE,MAIN SWITCH(KM-2030)	1	1	1
	33	2AV27110	WIRE,TRANSFER HIGH VOLTAGE	1	1	1
	34	2AV27170	WIRE,CASSETTE SIZE	1	1	1
●	35	2AV27290	SWITCH,MAIN	1	1	1
	36	2AV27370	SWITCH,INTERLOCK	1	1	1

2AV/2AX

SP	Ref. No.	Part. No.	Description	Quantity		
				120V	230V	240V
●	37	2AV28041	HIGH VOLTAGE PCB	1	1	1
●	38	2AV28051	POWER SOURCE PCB(100)	1		
●	38	2AV28060	POWER SOURCE PCB(200)		1	1
	39	19527290	TOTAL COUNTER	1	1	1
	40	2AL27090	POWER CORD(USA)	1		
●	41	2AR27040	SWITCH,INTERLOCK	1	1	1
	42	2AR27710	CORE 15-26X13	2	2	2
	43	2AR27710	CORE 15-26X13(KM-2030)	1	1	1
	44	J0110020	PLUG 2P,MINI MATENLOCK,VO,172165-1	1	1	1
	45	2A327010	SENSOR,HUMIDITY	1	1	1
	46	29927231	POWER CODE AS(240)			1
●	47	35911720	GROUND PLATE,PAPER FEED ADF	1	1	1
●	48	35923010	FAN,COOLING	2	2	2
	49	65027470	CORE,7-15X18	1	1	1
	50	65027470	CORE,7-15X18(KM-2030)	1	1	1
	51	M7009010	WIRE SADDLE,LWS-2N-VOF(TAKEUCHI)(KM-2030)	1	1	1
	52	M2104200	EDGING EDS-1	1	1	1
	53	M2104220	EDGING,EDS-1717U	3	3	3
	54	M2104250	EDGING,EDS-17L(KITAGAWA)	1	1	1
	55	M2104350	EDGING,EDS-0607M(KITAGAWA)	2	2	2
	56	M2105730	MINIATURE CLAMP,UAMS-07-0	3	3	3
	57	M2105730	MINIATURE CLAMP,UAMS-07-0(KM-2030)	2	2	2
	58	M2107240	BAND,KI-100(KITAGAWA)	1	1	1
	59	M2109000	WIRE SADDLE,WS-1NS	3	3	3
	60	M2109000	WIRE SADDLE,WS-1NS(KM-2030)	1	1	1
	61	M2109010	WIRE SADDLE,WS-2NS	1	1	1
	62	M2505190	CLAMP,GNK-4N(NIKKO)(KM-2030)	1	1	1
	63	2AR27720	CORE 8-18X13	1	1	1
	64	2AR27800	POWER CORD(230)		1	
	65	M2105400	CLAMP,K-103G	2	2	2
	66	M1661000	FUSE 15A,314015	1		
	66	M1658010	FUSE,218008(LITTEL-FUSE)		1	1
	67	M1658010	FUSE,218008(LITTEL-FUSE)		1	1
	68	M5558000	FUSE,UL-TSC-8A-N1(S.O.C)	1		
	68	M5554020	FUSE,SS1-250V-4A(SOC)		1	1

- Parts with "•" are component parts or sub-assemblies of the assembly appearing immediately above them.
- Parts with "●" indicates the Service parts.



KM-2030

FIG. 15 OPERATION UNIT

2AV/2AX

SP	Ref. No.	Part. No.	Description	Quantity		
				120V	230V	240V
●	1	2AV23030	MOUNT,FAN	1	1	1
●	2	2AV24011	OPERATION UNIT PCB(KM-1530)	1	1	1
●	2	2AX24011	OPERATION UNIT PCB(KM-2030)	1	1	1
●	3	2AX24020	LCD,OPERATION UNIT(KM-2030)	1	1	1
●	4	2AV25010	COVER,OPERATION UNIT(KM-1530)	1	1	1
●	4	2AX25010	COVER,OPERATION UNIT(KM-2030)	1	1	1
●	5	2AV25020	KEY,OPERATION UNIT 10	1	1	1
●	6	2AV25070	KEY,PAPER SELECT(KM-1530)	3	3	3
●	7	2AX25020	KEY,DECISION(KM-2030)	4	4	4
●	8	2AX25030	KEY,DECISION (UP)(KM-2030)	1	1	1
●	9	2AX25040	KEY,DECISION(DOWN)(KM-2030)	1	1	1
●	10	2AX25050	KEY,DECISION(RIGHT)(KM-2030)	1	1	1
●	11	2AX25060	KEY,DECISION(LEFT)(KM-2030)	1	1	1
●	12	2AV25100	RIGHT COVER,OPERATION UNIT	1	1	1
●	13	2AV25110	LENS,PRINT KEY	1	1	1
●	14	2AV25120	RIGHT SHEET,DUST SHIELD(KM-1530)	1	1	1
●	15	2AV25130	LEFT SHEET,DUST SHIELD(KM-1530)	1	1	1
●	16	2AX25070	RIGHT SHEET,DUST SHIELD(KM-2030)	1	1	1
●	17	2AX25080	CENTER SHEET,DUST SHIELD(KM-2030)	1	1	1
●	18	2AX25090	LEFT SHEET,DUST SHIELD(KM-2030)	1	1	1
●	19	2AV25140	KEY,PRINT(INCH)	1		1
●	19	2AV25200	KEY,PRINT(METRIC)		1	
●	20	2AV25150	KEY,STOP CLEAR(INCH)	1		1
●	20	2AV25210	KEY,STOP CLEAR(METRIC)		1	
●	21	2AV25160	KEY,RESET(INCH)	1		1
●	21	2AV25220	KEY,RESET(METRIC)		1	
●	22	2AV25170	KEY,ZOOM(INCH)(KM-1530)	1	1	1
●	23	2AV25180	LEFT SHEET,OPERATION UNIT(INCH)(KM-1530)	1		
●	23	2AX25110	LEFT SHEET,OPERATION UNIT(INCH)(KM-2030)	1		1
●	23	2AV25230	LEFT SHEET,OPERATION UNIT(METRIC)(KM-1530)		1	
●	23	2AX25120	LEFT SHEET,OPERATION UNIT(METRIC)(KM-2030)		1	
●	23	2AV25250	LEFT SHEET,OPERATION UNIT(MAP)(KM-1530)			1
●	24	2AV25190	CENTER SHEET,OPERATION UNIT(INCH)	1		1
●	24	2AV25240	CENTER SHEET,OPERATION UNIT(METRIC)		1	
●	25	2AV04230	LOWER COVER OPERATION UNIT	1	1	1
●	26	2AX25130	SPRING PLATE, OPERATION UNIT GROUND(KM-2030)	1	1	1
●	27	2AV04240	LEFT MOUNT BASE OPERATION UNIT	1	1	1
●	28	2AV04250	RIGHT MOUNT BASE OPERATION UNIT	1	1	1
●	29	35923010	FAN,COOLING	1	1	1

- Parts with "●" are component parts or sub-assemblies of the assembly appearing immediately above them.
- Parts with "●" indicates the Service parts.

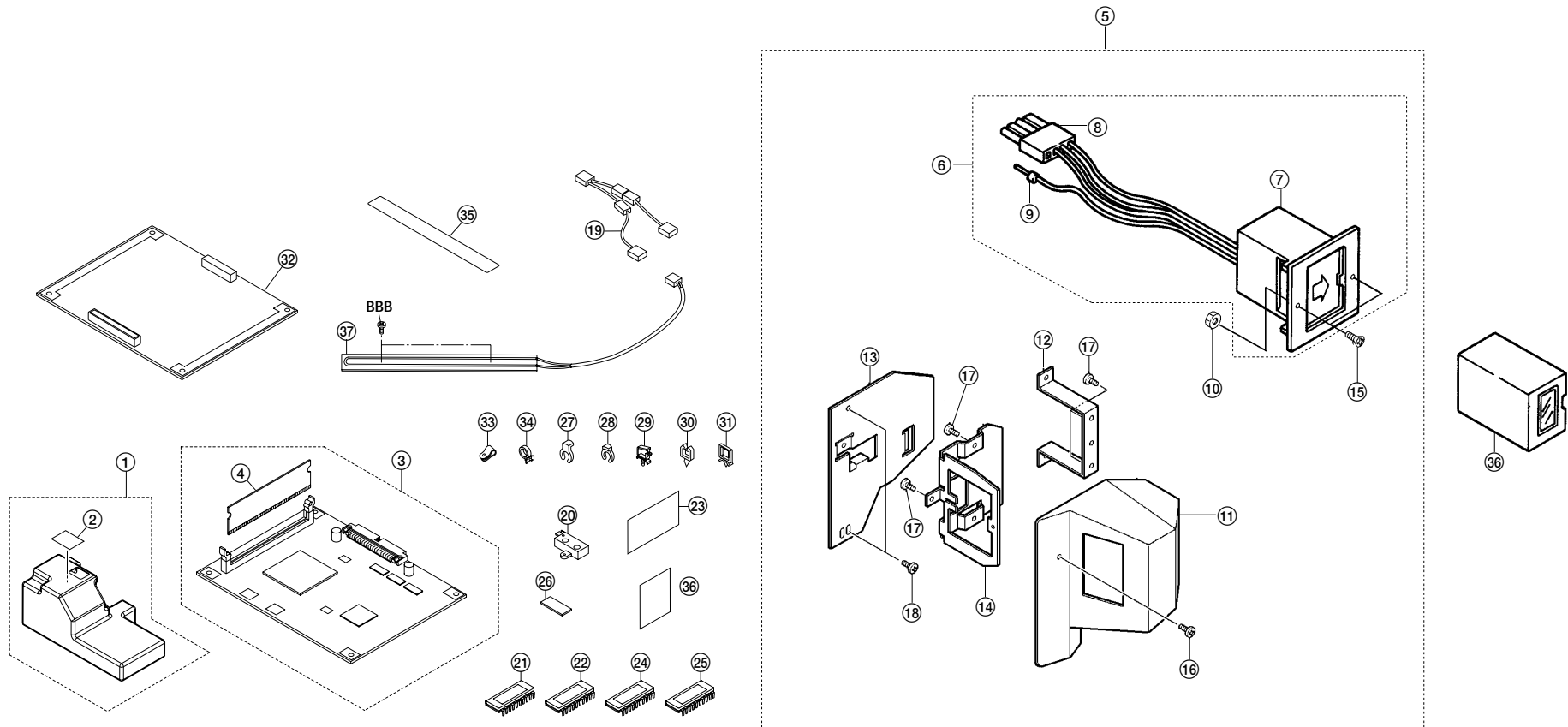


FIG. 16 ACCESSORIES & OPTION

2AV/2AX

SP	Ref. No.	Part. No.	Description	Quantity		
				120V	230V	240V
	1	2AV60020	DISPOSAL TANK ASS'Y	1	1	1
	2	*36505111	LABEL,TONER DISPOSAL TANK	1	1	1
	3	2AV60040	MEMORY PCB ASS'Y(KM-1530)	1	1	1
	4	*2A027300	IC DIMM(KM-1530)	1	1	1
	5	2A369701	SET PARTS KEYCOUNTER NEW COLOR	1	1	1
	6	*41529210	SOCKET ASS'Y,KEY COUNTER	1	1	1
	7	**41525016	SOCKET,KEY COUNTER	1	1	1
	8	**41529105	PLUG EL 4P	1	1	1
	9	**29127200	SOCKET (S) EL	4	4	4
	10	*C2303000	NUT BNM3 (BLACK)	1	1	1
	11	*2A360010	COVER,KEY COUNTER	1	1	1
	12	*66060040	MOUNT,KEY COUNTER	1	1	1
	13	*66060022	RETAINER,KEY COUNTER COVER	1	1	1
	14	*66060030	RETAINER,KEY COUNTER	1	1	1
	15	*B2303060	COUNTER-SUNK HEAD SCREW BFHM3X6 (BLACK)	2	2	2
	16	*B4104060	TRIPLE SCREW M4X6(CHROMIUM)	1	1	1
	17	*B4304060	TRIPLE SCREW M4X6 (BLACK)	4	4	4
	18	*B4304100	TRIPLE SCREW M4X10 (BLACK)	2	2	2
	19	3A568010	WIRE,HEATER(KM-2030)	1		
	20	35927290	SENSOR,ORIGINAL DETECTION(KM-1530)		1	1
	21	2AX68010	IC,ROM MAIN SP(KM-2030)	1		
	22	2AV68060	IC,ROM MAIN 1 SP(KM-1530)	1		
	23	2AV05260	LABEL,ERROR CODE(USA)	1		
	24	2AX68020	IC,ROM OPERATION UNIT 1 SP(KM-2030)	1		
	24	2AX68040	IC,ROM OPERATION UNIT 1 SP(EUR)(KM-2030)		1	
	25	2AX68030	IC,ROM OPERATION UNIT 2 SP(KM-2030)	1		
	25	2AX68050	IC,ROM OPERATION UNIT 2 SP(EUR)(KM-2030)		1	
	26	65907480	SLIDER,CASSETTE	2	2	2
	27	33906630	STOPPER 5,RING	2	2	2
	28	34806480	STOPPER 6	1	1	1
	29	M2109340	WIRE SADDLE,YMC-05-0(KITAGAWA)	2	2	2
	30	M2105740	MINIATURE CLAMP,UAMS-05S-2	2	2	2
	31	M2109010	WIRE SADDLE,WS-2NS	1	1	1
●	32	2AV68030	SPECIAL TOOL MEMORY PCB	1	1	1
	33	M2105030	NYLON CLAMP 5N,NK-5N(KM-2030)	1		
	34	M2607010	BINDING BAND,PLT1M(KM-2030)	1		
	35	2AV05170	LABEL,HIGH TEMPERATURE CAUTION(KM-2030)	1		
	36	3A105020	SEAL ON/OFF	1	1	1
●	37	33960020	HEATER,CASSETTE (240)		1	1
●	37	34860030	HEATER,CASSETTE(120)	1		

- Parts with "*" are component parts or sub-assemblies of the assembly appearing immediately above them.
- Parts with "●" indicates the Service parts.

INDEX

2AV/2AX

SP	Part. No.	Description	Quantity			Fig. No.
			120V	230V	240V	
	18314060	COLLAR,PARTITION JOINT	1	1	1	12
	18506140	LOWER GEAR 18,REGISTRATION	2	2	2	5
	18512340	GUIDE,SCANNER WIRE	2	2	2	9
●	18522430	COUPLER,TONER SUPPLY	1	1	1	13
●	19012041	MAT,ORIGINAL HOLDER	1	1	1	8
●	19012050	SHEET,ORIGINAL HOLDER	1	1	1	8
●	19012060	HINGE,ORIGINAL HOLDER	2	2	2	8
●	19507050	LEVER,CASSETTE BASE RELEASE	2	2	2	3,4
●	19514270	REAR BUSHING,AGITATION	1	1	1	11
●	19518240	GEAR 12,RECYCLE	1	1	1	11
	19527290	TOTAL COUNTER	1	1	1	14
●	2AB93040	PARTS,ROLLER PRESSURE,SP	1	1	1	12
	2AC05130	LABEL,SUPPLY(EUR)	1	1	1	1
	2AC12300	HOLDER FFC	1	1	1	9
	2AC12360	GUIDE,RELEASE SWITCH	1	1	1	9
●	2AC12370	SWITCH,RELEASE DETECTION	1	1	1	9
	2AC12380	SPRING,RELEASE SWITCH	1	1	1	9
	2AC27800	WIRE,SCANNER INVERTER	1	1	1	9
	2AL27090	POWER CORD(USA)	1			14
●	2AR00400	SEPARATION CLAW ASS'Y	3	3	3	11
	2AR05160	LABEL,IMAGE FORMATION	1	1	1	11
	2AR05200	LABEL,PAPER UPPER LIMIT	2	2	2	3,4
	2AR08030	SHAFT,DRUM	1	1	1	11
	2AR09040	REAR BUSHING,DRUM SHAFT	1	1	1	11
	2AR09060	FILM,LIGHT SHIELD	1	1	1	11
	2AR09140	FRONT BUSHING,DEVELOPING	1	1	1	11
	2AR09150	REAR BUSHING,DEVELOPING	1	1	1	11
	2AR09170	RAIL MAIN CHARGER A	1	1	1	11
	2AR09200	MOUNT M3A	2	2	2	11
	2AR09210	MOUNT M3B	8	8	8	11
	2AR09220	MOUNT M3C	2	2	2	11
	2AR09230	FRONT BUSHING,DRUM SHAFT	1	1	1	11
	2AR09240	MOUNT M3D	1	1	1	11
	2AR10020	GRID,SHIELD	1	1	1	11
	2AR10030	TERMINAL,MAIN CHARGER	1	1	1	11
	2AR10040	FRONT LID,MAIN CHARGER	1	1	1	11
	2AR10050	REAR LID,MAIN CHARGER	1	1	1	11
	2AR10060	TERMINAL BASE,MAIN CHARGER	1	1	1	10
	2AR10070	SHEET,MAIN CHARGER TERMINAL BASE	1	1	1	10
	2AR10080	MOUNT BASE,CLEANING LAMP	1	1	1	2

SP	Part. No.	Description	Quantity			Fig. No.
			120V	230V	240V	
	2AR10090	SEAL,MAIN CHARGER	3	3	3	11
	2AR10120	HOUSING A,MAIN CHARGER	1	1	1	11
	2AR10130	SLIDER,MAIN CHARGER CLEANER	1	1	1	11
	2AR10140	HOLDER,MAIN CHARGER CLEANER	1	1	1	11
	2AR10150	PAD,MAIN CHARGER CLEANER	1	1	1	11
	2AR10160	WIRE,MAIN CHARGER	1	1	1	11
	2AR12200	FILM,FFC	1	1	1	9
	2AR14010	MAGNET,DEVELOPING	1	1	1	11
	2AR14030	PADDLE,DEVELOPING	7	7	7	11
	2AR14040	LEFT SPIRAL,DEVELOPING	1	1	1	11
	2AR14050	RIGHT SPIRAL,DEVELOPING	1	1	1	11
	2AR14091	FRONT BUSHING,MAGNET ROLLER	1	1	1	11
	2AR14100	RETAINER,MAGNET ROLLER	1	1	1	11
	2AR14110	GEAR 16,MAGNET ROLLER	1	1	1	11
	2AR14130	FRONT SPONGE B,LID DEVELOPING	1	1	1	11
	2AR14140	FRONT SPONGE C,LID DEVELOPING	1	1	1	11
	2AR14160	SPACER,TONER SENSOR	1	1	1	11
	2AR14170	FRONT LID,DEVELOPING	1	1	1	11
	2AR14200	FRONT SPONGE,DEVELOPING	1	1	1	11
	2AR14211	RIGHT SPONGE,DEVELOPING	1	1	1	11
	2AR14240	SEAL,MAGNET ROLLER	2	2	2	11
●	2AR14250	SEAL,DEVELOPING	2	2	2	11
	2AR14290	RIGHT FILM,DEVELOPING	1	1	1	11
	2AR14300	LOWER FILM,DEVELOPING	3	3	3	11
	2AR14310	GEAR 19,PADDLE	1	1	1	11
	2AR14330	LEFT SPONGE,DEVELOPING	1	1	1	11
	2AR14340	SHAFT,PADDLE	1	1	1	11
	2AR14350	FRONT SPONGE E,LID DEVELOPING	1	1	1	11
	2AR14380	REAR BUSHING,AGITATION	3	3	3	11
	2AR14411	RIGHT FRONT SPONGE,DEVELOPING	1	1	1	11
	2AR14490	FRONT SPONGE F,LID DEVELOPING	1	1	1	11
	2AR14500	FRONT SPONGE G,LID DEVELOPING	1	1	1	11
	2AR14510	FRONT SPONGE H,LID DEVELOPING	1	1	1	11
	2AR14520	FRONT SPONGE I,LID DEVELOPING	1	1	1	11
	2AR14540	LOWER FRONT FILM,LID DEVELOPING	1	1	1	11
	2AR14551	HOUSING A,DEVELOPING	1	1	1	11
	2AR14560	MOUNT A,DOCTOR BLADE	1	1	1	11
	2AR14570	COVER A,DOCTOR BLADE	1	1	1	11
	2AR14580	DOCTOR BLADE A,DEVELOPING	1	1	1	11
	2AR14590	UPPER LID A,DEVELOPING	1	1	1	11

• Parts with "●" indicates the Service parts.

2AV/2AX

SP	Part. No.	Description	Quantity			Fig. No.
			120V	230V	240V	
	2AR14600	UPPER SPONGE A,LID DEVELOPING	1	1	1	11
	2AR14610	SPONGE,DEVELOPING HOUSING	2	2	2	11
	2AR14620	FRONT SPONGE,DEVELOPING HOUSING	1	1	1	11
	2AR14630	REAR SPONGE,DEVELOPING HOUSING	1	1	1	11
	2AR14640	REAR SPONGE,LID	1	1	1	11
	2AR14650	SPONGE,COVER DOCTOR BLADE	1	1	1	11
	2AR14660	FILM A,DEVELOPING	2	2	2	11
	2AR14670	FILM A,COVER DOCTOR BLADE	1	1	1	11
	2AR15020	MOVING BASE,CARTRIDGE	1	1	1	2
	2AR15060	COVER,CARTRIDGE MOUNT BASE	1	1	1	2
	2AR15080	LEVER,CARTRIDGE MOVING	1	1	1	2
	2AR16130	MOUNT BASE,TRANSFER ROLLER BUSHING	2	2	2	7
	2AR17030	FRONT BUSHING,TRANSFER ROLLER PRESS	1	1	1	7
	2AR17040	REAR BUSHING,TRANSFER ROLLER PRESS	1	1	1	7
	2AR17070	TERMINAL,TRANSFER PRESSURE	1	1	1	7
	2AR17080	COLLAR,TRANSFER ROLLER	2	2	2	7
	2AR17090	CLEANER,TRANSFER	1	1	1	7
	2AR17120	PULLEY,TRANSFER ROLLER	2	2	2	7
	2AR18050	SPIRAL,CLEANING	1	1	1	11
	2AR18070	SPIRAL,RECYCLE	1	1	1	11
	2AR18080	SPACER,DRUM	1	1	1	11
	2AR18090	SHAFT,THRUST	1	1	1	11
	2AR18100	GEAR 21,THRUST	1	1	1	11
	2AR18110	GEAR 17,SPIRAL	1	1	1	11
	2AR18120	BUSHING,THRUST	2	2	2	11
	2AR18151	FRONT SPONGE A,CLEANING	1	1	1	11
	2AR18160	REAR SPONGE A,CLEANING	1	1	1	11
	2AR18170	INNER SPONGE,CLEANING	1	1	1	11
	2AR18191	LOWER SPONGE,CLEANING	1	1	1	11
	2AR18200	FRONT SPONGE,CLEANING	1	1	1	11
	2AR18211	FRONT SEAL A,CLEANING	1	1	1	11
	2AR18221	REAR SEAL A,CLEANING	1	1	1	11
	2AR18240	CLAW,SEPARATION	3	3	3	11
	2AR18250	MOUNT BASE,CLAW SEPARATION	3	3	3	11
	2AR18260	PULLEY,CLAW SEPARATION	3	3	3	11
	2AR18280	SPRING,CLAW SEPARATION	3	3	3	11
	2AR18341	SPONGE,MOUNT BLADE	2	2	2	11
	2AR18371	SPONGE,CLEANING	2	2	2	11
	2AR18380	BUSHING,CLEANING	2	2	2	11
	2AR18400	HOUSING A,CLEANING	1	1	1	11

SP	Part. No.	Description	Quantity			Fig. No.
			120V	230V	240V	
	2AR18410	MOUNT A,BLADE	1	1	1	11
	2AR18430	LEVER A,PRESSURE RELEASE	2	2	2	11
	2AR18450	GUIDE,SPIRAL	1	1	1	11
	2AR18460	FRONT SPONGE C,CLEANING	1	1	1	11
	2AR18470	REAR SPONGE C,CLEANING	1	1	1	11
	2AR18480	LOWER SPONGE A,CLEANING	2	2	2	11
	2AR22030	COUPLING,DRUM	1	1	1	13
	2AR22570	SPRING,DEVELOPING DRIVE	1	1	1	13
●	2AR27031	LAMP,CLEANING LAMP	1	1	1	10
●	2AR27040	SWITCH,INTERLOCK	1	1	1	14
	2AR27620	DIODE,DEVELOPING SEAL	1	1	1	11
	2AR27710	CORE 15-26X13	3	3	3	14
	2AR27720	CORE 8-18X13	4	4	4	9,14
	2AR27750	CORE 11-25X14	1	1	1	5
	2AR27800	POWER CORD(230)		1		14
●	2AR68580	COVER A DOCTOR BLADE ASS'Y	1	1	1	11
●	2AR93410	LOWER SEAL A,CLEANING	1	1	1	11
●	2AR93420	MAIN CHARGER ASS'Y A	1	1	1	11
	2AV00010	SCANNER FRAME ASS'Y	1	1	1	9
●	2AV01011	MAIN PCB ASS'Y	1	1	1	14
●	2AV01030	POWER INLET ASS'Y	1	1	1	14
	2AV02010	BASE,MACHINE	1	1	1	2
	2AV02020	UPPER FRAME,MACHINE	1	1	1	2
	2AV02030	FRONT FRAME	1	1	1	2
	2AV02040	REAR FRAME	1	1	1	2
	2AV02050	RIGHT SUPPORT PLATE,SCANNER	1	1	1	2
	2AV02060	LEFT SUPPORT PLATE,SCANNER	1	1	1	2
	2AV02070	FRONT STAY	1	1	1	2
	2AV02080	TOP REINFORCEMENT	1	1	1	2
	2AV02090	LOWER FRONT REINFORCEMENT	1	1	1	2
	2AV02100	RIGHT REINFORCEMENT	1	1	1	2
	2AV02110	MOUNT,SHAFT HANDLE	1	1	1	2
	2AV02120	MOUNT HINGE	2	2	2	1
●	2AV02140	FRONT HINGE,COVER	2	2	2	1
	2AV02150	FRONT RETAINER,SCANNER	1	1	1	2
	2AV02160	RIGHT RETAINER,SCANNER	1	1	1	2
●	2AV02170	SHAFT,HANDLE	2	2	2	2
	2AV02180	GROUND PLATE,REGISTRATION ROLLER	1	1	1	6
●	2AV04010	FRONT COVER	1	1	1	1
●	2AV04020	HOLDER SAFETY SWITCH	1	1	1	1

• Parts with "●" indicates the Service parts.

SP	Part. No.	Description	Quantity			Fig. No.
			120V	230V	240V	
●	2AV04030	UPPER FRONT COVER	1	1	1	1
●	2AV04040	FRONT LEFT COVER	1	1	1	1
●	2AV04050	UPPER LEFT COVER	1	1	1	1
●	2AV04060	LEFT COVER,MIDDLE	1	1	1	1
●	2AV04070	LOWER LEFT COVER	1	1	1	1
●	2AV04080	REAR LEFT COVER	1	1	1	1
●	2AV04090	RIGHT COVER	1	1	1	1
●	2AV04100	REAR COVER SCANNER	1	1	1	1
●	2AV04110	UPPER COVER,CONVEYING	1	1	1	7
●	2AV04120	COVER,CONVEYING	1	1	1	7
	2AV04130	SHAFT,CONVEYING HANDLE	1	1	1	7
	2AV04140	FULCRUM PIN,CONVEYING UNIT	1	1	1	7
●	2AV04150	HANDLE,CONVEYING UNIT	1	1	1	7
●	2AV04160	UPPER COVER,EJECT	1	1	1	1
●	2AV04170	COVER,TRAY	1	1	1	1
●	2AV04180	COVER DUCT	1	1	1	2
●	2AV04190	REAR COVER	1	1	1	1
●	2AV04210	REAR COVER,TRAY	1	1	1	1
●	2AV04220	UPPER REAR COVER,TRAY	1	1	1	1
●	2AV04230	LOWER COVER OPERATION UNIT	1	1	1	15
	2AV04240	LEFT MOUNT BASE OPERATION UNIT	1	1	1	15
	2AV04250	RIGHT MOUNT BASE OPERATION UNIT	1	1	1	15
	2AV04260	LID RIGHT COVER	1	1	1	1
●	2AV05050	LABEL,CONVEYING JAM	1	1	1	1
●	2AV05090	SHEET,CASSETTE SIZE INDICATION(METRIC)		2	2	3,4
●	2AV05100	SHEET,CASSETTE SIZE INDICATION(INCH)	2			3,4
●	2AV05110	LABEL,BYPASS SIZE INDICATION(METRIC)		1	1	6
●	2AV05120	LABEL,BYPASS SIZE INDICATION(INCH)	1			6
	2AV05130	LEFT LABEL,GUIDE EJECT	2	2	2	12
	2AV05170	LABEL,HIGH TEMPERATURE CAUTION	2	1	1	12,16
	2AV05260	LABEL,ERROR CODE(USA)	1			16
●	2AV06010	PULLEY,PAPER FEED	4	4	4	5,6
	2AV06020	SHAFT,PAPER FEED	1	1	1	6
●	2AV06030	COLLAR,PAPER FEED	4	4	4	5,6
	2AV06040	MOUNT,REGISTRATION SWITCH	1	1	1	6
	2AV06050	MOUNT,REGISTRATION CLEANER	1	1	1	6
●	2AV06060	RIGHT ROLLER,REGISTRATION	1	1	1	6
●	2AV06070	LEFT ROLLER,REGISTRATION	1	1	1	7
	2AV06080	LEFT RAIL,CASSETTE	1	1	1	2
	2AV06090	MOUNT,PAPER EMPTY SWITCH	1	1	1	6

SP	Part. No.	Description	Quantity			Fig. No.
			120V	230V	240V	
	2AV06100	RIGHT MOUNT,SIZE DETECTION	1	1	1	2
	2AV06110	SHAFT,BYPASS	1	1	1	6
	2AV06120	CAM,BYPASS	1	1	1	6
	2AV06130	LIFT PLATE,BYPASS	1	1	1	6
	2AV06140	STOPPER,BYPASS	1	1	1	6
	2AV06150	MOUNT BASE,BYPASS PAD	1	1	1	6
●	2AV06160	SHEET,BYPASS	1	1	1	6
	2AV06170	COVER,BYPASS	1	1	1	6
	2AV06180	COLLAR A,BYPASS PAPER FEED	1	1	1	6
	2AV06190	COLLAR B,BYPASS PAPER FEED	1	1	1	6
	2AV06200	COLLAR C,BYPASS PAPER FEED	2	2	2	6
●	2AV06210	SHEET,BYPASS LIFT	1	1	1	6
	2AV06220	SPRING,BYPASS LIFT	1	1	1	6
●	2AV06230	SPRING,BYPASS PAD	1	1	1	6
	2AV06240	RIGHT FRONT GUIDE FILM,REGISTRATION	6	6	6	2
	2AV06250	GUIDE FILM,RAIL CASSETTE	1	1	1	2
	2AV06260	GUIDE,REGISTRATION	2	2	2	7
	2AV06270	LEFT FRONT FILM,REGISTRATION	2	2	2	7
	2AV06300	FILM,BYPASS STOPPER TAPE	1	1	1	6
	2AV06320	PULLEY,PAPER FEED	1	1	1	6
	2AV06330	SHEET B,BYPASS	4	4	4	2
	2AV06340	FRONT FILM,BYPASS PAD	4	4	4	2
	2AV06350	FRONT SPACER A,CLAW CASSETTE	1	1	1	3
	2AV06380	REINFORCEMENT,BYPASS	1	1	1	6
	2AV06390	PLATE SPRING,BYPASS TABLE	1	1	1	2
	2AV06400	SPONGE,BYPASS TABLE	1	1	1	2
	2AV07010	CASSETTE,PAPER FEED	2	2	2	3,4
●	2AV07020	COVER,CASSETTE	1	1	1	3
●	2AV07030	SHEET,CASSETTE	2	2	2	3,4
	2AV07040	GROUND PLATE,CASSETTE	2	2	2	3,4
	2AV07050	FRONT CURSOR,CASSETTE	2	2	2	3,4
	2AV07060	REAR CURSOR,CASSETTE	2	2	2	3,4
	2AV07070	WORK PLATE,CASSETTE	2	2	2	3,4
	2AV07080	SPRING,SIDE SIZE DETECTION	2	2	2	3,4
	2AV07090	TURN PLATE,TRAILING EDGE SIZE DETECTION	2	2	2	3,4
●	2AV07100	UPPER TABLE,BYPASS	1	1	1	6
●	2AV07110	COVER,BYPASS TABLE	1	1	1	6
	2AV07120	FRONT CURSOR,BYPASS	1	1	1	6
	2AV07130	REAR CURSOR,BYPASS	1	1	1	6
	2AV07140	FRONT RACK,BYPASS	1	1	1	6

• Parts with "●" indicates the Service parts.

2AV/2AX

SP	Part. No.	Description	Quantity			Fig. No.
			120V	230V	240V	
●	2AV07150	REAR RACK,BYPASS	1	1	1	6
●	2AV07160	SUPPORT PLATE,BYPASS	1	1	1	6
	2AV07170	FRONT CLAW,CASSETTE	1	1	1	3
	2AV07180	REAR CLAW,CASSETTE	1	1	1	3
	2AV07190	FRONT CLAW A,CASSETTE	1	1	1	4
	2AV07200	REAR CLAW A,CASSETTE	1	1	1	4
	2AV09010	FRONT FRAME,IMAGE FORMATION	1	1	1	11
	2AV09020	REAR FRAME,IMAGE FORMATION	1	1	1	11
	2AV09030	FRONT COVER,IMAGE FORMATION	1	1	1	11
	2AV12080	GUIDE FFC1	1	1	1	9
	2AV12090	MIRROR FRAME A	1	1	1	9
●	2AV12100	LAMP,SCANNER	1	1	1	9
	2AV12110	REFLECTOR,SCANNER	1	1	1	9
	2AV12120	LIGHT SHIELD,PI	1	1	1	9
	2AV12130	MIRROR FRAME B	1	1	1	9
	2AV12140	ADJUSTING PLATE B,MIRROR FRAME	1	1	1	9
●	2AV12150	MIRROR A	1	1	1	9
●	2AV12160	MIRROR B	2	2	2	9
	2AV12170	MOUNT,SCANNER PI	1	1	1	9
	2AV12180	PULLY,SCANNER	8	8	8	9
●	2AV12190	FRONT WIRE,SCANNER	1	1	1	9
●	2AV12200	REAR WIRE,SCANNER	1	1	1	9
	2AV12210	SHAFT,SCANNER DRIVE	1	1	1	9
●	2AV12220	MOTOR,SCANNER	1	1	1	9
	2AV12230	GEAR 44/16	1	1	1	9
	2AV12240	GEAR 26	1	1	1	9
●	2AV12250	CONTACT GLASS,ADF	1	1	1	9
	2AV12260	MOUNT BASE,DF HINGE	2	2	2	9
	2AV12270	MOUNT,SCANNER MOTOR	1	1	1	9
	2AV12290	MOUNT,RELEASE SWITCH	1	1	1	9
	2AV12300	HOLDER,ADF CONTACT GLASS	2	2	2	9
	2AV12310	COVER,OPERATION UNIT WIRE	1	1	1	9
	2AV12320	FILM A,MIRROR FRAME	1	1	1	9
	2AV12340	MOUNT,ORIGINAL DETECTION SENSOR	1	1	1	9
	2AV12350	STOPPER,WIRE	2	2	2	9
●	2AV12370	COVER A,PLATEN	1	1	1	8
●	2AV12380	COVER B,PLATEN	1	1	1	8
●	2AV12390	RIGHT BASE,MAT	1	1	1	8
●	2AV12400	RIGHT MOVING PLATE,MAT	1	1	1	8
●	2AV12410	LEFT MOVING PLATE,MAT	1	1	1	8

SP	Part. No.	Description	Quantity			Fig. No.
			120V	230V	240V	
●	2AV12420	BASE,MAT	1	1	1	8
	2AV12430	LOWER SEAL,SCANNER	2	2	2	9
●	2AV12450	SLIDER,SCANNER	8	8	8	9
●	2AV12460	REAR ORIGINAL SIZE INDICATOR(METRIC)		1	1	9
●	2AV12470	REAR ORIGINAL SIZE INDICATOR(INCH)	1			9
●	2AV12480	LABEL,ORIGINAL SIZE INDICATOR(METRIC)		1	1	9
●	2AV12490	LABEL,ORIGINAL SIZE INDICATOR(INCH)	1			9
	2AV12520	COVER,ISU	1	1	1	9
●	2AV13010	UNIT,LSU	1	1	1	10
	2AV13020	SPACER,LSU	1	1	1	10
	2AV13030	SPONGE,LASER DIODE	1	1	1	10
	2AV13040	SPONGE,POLYGON	1	1	1	10
	2AV13050	RIGHT SPACER,LSU	1	1	1	10
	2AV15010	MOVING BASE,CARTRIDGE DRIVE	1	1	1	2
	2AV15020	MOUNT,CARTRIDGE DRIVE	1	1	1	2
	2AV15030	GEAR A,TONER SUPPLY				2
	2AV15040	GEAR B,TONER SUPPLY	1			2
	2AV15050	GEAR C,TONER SUPPLY		1	1	2
	2AV15060	GEAR D,TONER SUPPLY		1	1	2
	2AV16010	GUIDE,TRANSFER	1	1	1	7
	2AV16020	STATIC ELIMINATION PLATE,CONVEYING	1	1	1	7
	2AV16030	TERMINAL,TRANSFER	1	1	1	7
	2AV16040	RIGHT GUIDE,TRANSFER	1	1	1	11
	2AV16050	FRONT POSITIONING PLATE,TRANSFER ROLLER	1	1	1	11
	2AV16060	REAR POSITIONING PLATE,TRANSFER ROLLER	1	1	1	11
	2AV16070	GROUND PLATE,CONVEYING UNIT	1	1	1	7
●	2AV16080	HOLDER,REGISTRATION	2	2	2	7
	2AV16100	ROLLER,TRANSFER	1	1	1	7
	2AV16110	FRONT FILM,TRANSFER GUIDE	1	1	1	11
	2AV16120	FRONT SHEET,TRANSFER GUIDE	1	1	1	7
	2AV16130	RIGHT SPONGE,GUIDE	1	1	1	11
	2AV18010	HOUSING,DISPOSAL	1	1	1	11
	2AV18020	SHUTTER,DISPOSAL	1	1	1	11
●	2AV18030	BLADE,CLEANING	1	1	1	11
●	2AV18040	SEAL,SHUTTER	1	1	1	11
	2AV18050	SPRING,BLADE	2	2	2	11
	2AV18060	FILM,MOUNT BLADE	2	2	2	11
	2AV18070	INNER FILM,CLEANING	1	1	1	11
	2AV18080	GUIDE,SEPARATION	3	3	3	11
	2AV18090	SEAL B,SHUTTER	2	2	2	11

• Parts with "●" indicates the Service parts.

SP	Part. No.	Description	Quantity			Fig. No.
			120V	230V	240V	
	2AV18100	SPONGE,SHUTTER	1	1	1	11
	2AV20010	FRONT FRAME, FIXING	1	1	1	12
	2AV20020	REAR FRAME, FIXING	1	1	1	12
	2AV20030	UPPER HOUSING, FIXING	1	1	1	12
	2AV20040	LOWER HOUSING, FIXING	1	1	1	12
	2AV20050	FRONT GUIDE, FIXING	1	1	1	12
	2AV20060	FRONT PRESSING PLATE, FIXING	1	1	1	12
	2AV20070	REAR PRESSING PLATE, FIXING	1	1	1	12
	2AV20080	FRONT MOUNT, FIXING HEATER	1	1	1	12
	2AV20090	REAR MOUNT, FIXING HEATER	1	1	1	12
●	2AV20100	ROLLER, HEAT	1	1	1	12
●	2AV20130	HEATER 120, FIXING	1			12
●	2AV20140	HEATER 230, FIXING		1	1	12
●	2AV20150	ROLLER, EJECT	1	1	1	12
●	2AV20160	PULLEY, EJECT	2	2	2	12
	2AV20170	SHAFT, EJECT PULLEY	1	1	1	12
	2AV20180	GUIDE, EJECT	1	1	1	12
	2AV20190	GUIDE, FEED SHIFT	1	1	1	12
●	2AV20200	ACTUATOR, EJECT SWITCH	1	1	1	12
●	2AV20210	SPRING, EJECT ACTUATOR	1	1	1	12
	2AV20220	LEFT GUIDE, EJECT	1	1	1	12
	2AV20230	MOUNT, THERMOSTAT	1	1	1	12
	2AV20240	MOUNT, THERMISTOR	1	1	1	12
●	2AV20250	THERMISTOR, FIXING	1	1	1	12
	2AV20260	HOLDER, FIXING WIRE	1	1	1	12
	2AV20270	PIN, FIXING RETAINING(M3)	2	2	2	12
	2AV20290	RIGHT SHEET, FIXING	1	1	1	12
	2AV22010	FRONT FRAME, DRIVE UNIT	1	1	1	13
	2AV22020	REAR FRAME, DRIVE UNIT	1	1	1	13
	2AV22030	POSITIONING PLATE, DRUM	1	1	1	13
	2AV22040	SHAFT, COUPLING	1	1	1	13
	2AV22050	SHAFT, DEVELOPING DRIVE	1	1	1	13
	2AV22060	SHAFT, CLEANING DRIVE	1	1	1	13
	2AV22100	GEAR, 52/30	1	1	1	13
	2AV22110	GEAR, 30 DEVELOPING	1	1	1	13
	2AV22120	GEAR, 26/14	1	1	1	13
	2AV22130	GEAR, 20	2	2	2	13
	2AV22160	GEAR, 15CL	1	1	1	13
	2AV22170	GEAR, 29	1	1	1	13
	2AV22180	GEAR 19, FIXING	1	1	1	13

SP	Part. No.	Description	Quantity			Fig. No.
			120V	230V	240V	
	2AV22200	GEAR, 16	1	1	1	13
	2AV22230	SPRING, FIXING JOINT	1	1	1	13
	2AV22280	GEAR, 34/23	1	1	1	13
	2AV22290	GEAR, 24	1	1	1	13
	2AV22300	GEAR, 32/16	2	2	2	13
	2AV22310	GEAR, 16 IDLE	1	1	1	13
	2AV22320	GEAR A, 58/30	1	1	1	13
	2AV22330	GEAR A, 48/27	1	1	1	13
	2AV22340	GEAR A, 60 DRUM	1	1	1	13
	2AV23010	UPPER DUCT, COOLING	1	1	1	14
	2AV23020	LOWER DUCT, COOLING	1	1	1	14
	2AV23030	MOUNT, FAN	1	1	1	15
●	2AV24011	OPERATION UNIT PCB	1	1	1	15
●	2AV25010	COVER, OPERATION UNIT	1	1	1	15
●	2AV25020	KEY, OPERATION UNIT 10	1	1	1	15
●	2AV25070	KEY, PAPER SELECT	3	3	3	15
●	2AV25100	RIGHT COVER, OPERATION UNIT	1	1	1	15
●	2AV25110	LENS, PRINT KEY	1	1	1	15
●	2AV25120	RIGHT SHEET, DUST SHIELD	1	1	1	15
●	2AV25130	LEFT SHEET, DUST SHIELD	1	1	1	15
●	2AV25140	KEY, PRINT(INCH)	1		1	15
●	2AV25150	KEY, STOP CLEAR(INCH)	1		1	15
●	2AV25160	KEY, RESET(INCH)	1		1	15
●	2AV25170	KEY, ZOOM(INCH)	1	1	1	15
●	2AV25180	LEFT SHEET, OPERATION UNIT(INCH)	1			15
●	2AV25190	CENTER SHEET, OPERATION UNIT(INCH)	1		1	15
●	2AV25200	KEY, PRINT(METRIC)		1		15
●	2AV25210	KEY, STOP CLEAR(METRIC)		1		15
●	2AV25220	KEY, RESET(METRIC)		1		15
●	2AV25230	LEFT SHEET, OPERATION UNIT(METRIC)		1		15
●	2AV25240	CENTER SHEET, OPERATION UNIT(METRIC)		1		15
●	2AV25250	LEFT SHEET, OPERATION UNIT(MAP)			1	15
	2AV26010	FRAME, SHIELD	1	1	1	14
	2AV26020	MOUNT, HIGH VOLTAGE PCB	1	1	1	14
	2AV26030	LEFT WORK PLATE, SAFETY SWITCH	1	1	1	13
	2AV26040	LEFT MOUNT, SAFETY SWITCH	1	1	1	14
	2AV26060	MOUNT, SUB POWER SOURCE	1	1	1	14
	2AV26080	MOUNT, BYPASS WIRE	1	1	1	14
	2AV26090	RIGHT COVER, SHIELD	1	1	1	14
	2AV26100	LEFT COVER, SHIELD	1	1	1	14

● Parts with "●" indicates the Service parts.

2AV/2AX

SP	Part. No.	Description	Quantity			Fig. No.
			120V	230V	240V	
	2AV26110	MOUNT,INLET	1	1	1	14
	2AV26130	GUIDE A,PCB	1	1	1	14
	2AV26140	GUIDE B,PCB	1	1	1	14
	2AV26150	GUIDE C,PCB	1	1	1	14
	2AV26160	GUIDE D,PCB	1	1	1	14
	2AV26190	GROUND PLATE A,PCB	2	2	2	14
	2AV26210	UPPER LID,SHIELD	1	1	1	14
	2AV26220	LOWER LID,SHIELD	1	1	1	14
	2AV26230	MOUNT,DF CONNECTOR	1	1	1	9
	2AV26240	READ LID,SHIELD	1	1	1	14
	2AV26250	GROUND PLATE,LSU	1	1	1	2
	2AV26260	GROUND PLATE,HIGH VOLTAGE	1	1	1	14
	2AV26270	LEFT PIN,SAFETY SWITCH	1	1	1	13
	2AV26280	GROUND PLATE A,HANDLE	1	1	1	2
	2AV26290	GROUND PLATE,HANDLE B	1	1	1	2
	2AV26300	GROUND PLATE STAY	1	1	1	2
●	2AV27011	WIRE,POWER SOURCE PRIMARY	1	1	1	14
	2AV27020	WIRE,POWER SOURCE SECONDARY	1	1	1	14
	2AV27030	UPPER WIRE	1	1	1	14
	2AV27040	LOWER WIRE	1	1	1	14
	2AV27050	WIRE,ADF	1	1	1	9
	2AV27060	WIRE,FIXING	1	1	1	12
	2AV27070	WIRE,MAIN SWITCH	1	1	1	14
	2AV27080	WIRE,IMAGE FORMATION	1	1	1	11
	2AV27090	WIRE,MAIN HIGH VOLTAGE	1	1	1	10
	2AV27100	WIRE,GRID	1	1	1	10
	2AV27110	WIRE,TRANSFER HIGH VOLTAGE	1	1	1	14
	2AV27120	JUNCTION WIRING,THERMOSTAT	1	1	1	12
	2AV27130	WIRE,OPERATION UNIT	1	1	1	9
	2AV27140	WIRE,SWITCH JUNCTION	1	1	1	9
	2AV27150	WIRE,SCANNER HOME	1	1	1	9
	2AV27170	WIRE,CASSETTE SIZE	1	1	1	14
	2AV27180	WIRE,BYPASS TRAY	1	1	1	6
●	2AV27190	MOTOR,PAPER FEED	1	1	1	13
●	2AV27250	CLUTCH,REGISTRATION	1	1	1	13
●	2AV27260	SWITCH,REGISTRATION	1	1	1	6
	2AV27270	JUNCTION WIRING,PAPER EMPTY SWITCH	1	1	1	6
●	2AV27290	SWITCH,MAIN	1	1	1	14
	2AV27310	JUNCTION WIRING,POLYGON	1	1	1	10
	2AV27320	JUNCTION WIRING,LASER DIODE	1	1	1	10

SP	Part. No.	Description	Quantity			Fig. No.
			120V	230V	240V	
●	2AV27330	CLUTCH,PAPER FEED	2	2	2	5,13
●	2AV27340	CLUTCH,BYPASS	1	1	1	13
	2AV27350	INLET,POWER SOURCE	1	1	1	14
	2AV27370	SWITCH,INTERLOCK	1	1	1	14
●	2AV28041	HIGH VOLTAGE PCB	1	1	1	14
●	2AV28051	POWER SOURCE PCB(100)	1			14
●	2AV28060	POWER SOURCE PCB(200)		1	1	14
●	2AV28080	INVERTER PCB	1	1	1	9
	2AV60020	DISPOSAL TANK ASS'Y	1	1	1	16
	2AV60040	MEMORY PCB ASS'Y	1	1	1	16
●	2AV68030	SPECIAL TOOL MEMORY PCB	1	1	1	16
	2AV68060	IC,ROM MAIN 1 SP	1			16
●	2AV82010	SET,DRUM	1	1	1	11
●	2AV93010	PARTS,ASS'Y LEFT REGISTRATION CLEANER,SP	1	1	1	7
●	2AV93020	PARTS,ASS'Y RIGHT REGISTRATION CLEANER,SP	1	1	1	6
●	2AV93030	PARTS,ASS'Y TRANSFER ROLLER,SP	1	1	1	7
●	2AX01010	MAIN PCB ASS'Y	1	1	1	14
●	2AX04010	REAR COVER	1	1	1	1
●	2AX04020	FRONT COVER	1	1	1	1
●	2AX07010	UPPER TABLE,BYPASS	1	1	1	6
●	2AX24011	OPERATION UNIT PCB	1	1	1	15
●	2AX24020	LCD,OPERATION UNIT	1	1	1	15
●	2AX25010	COVER,OPERATION UNIT	1	1	1	15
●	2AX25020	KEY,DECISION	4	4	4	15
●	2AX25030	KEY,DECISION (UP)	1	1	1	15
●	2AX25040	KEY,DECISION(DOWN)	1	1	1	15
●	2AX25050	KEY,DECISION(RIGHT)	1	1	1	15
●	2AX25060	KEY,DECISION(LEFT)	1	1	1	15
●	2AX25070	RIGHT SHEET,DUST SHIELD	1	1	1	15
●	2AX25080	CENTER SHEET,DUST SHIELD	1	1	1	15
●	2AX25090	LEFT SHEET,DUST SHIELD	1	1	1	15
●	2AX25110	LEFT SHEET,OPERATION UNIT(INCH)	1		1	15
●	2AX25120	LEFT SHEET,OPERATION UNIT(METRIC)		1		15
	2AX25130	SPRING PLATE, OPERATION UNIT GROUND	1	1	1	15
	2AX26010	GUIDE E,PCB	1			14
	2AX27010	WIRE,POWER SOURCE SECONDARY	1	1	1	14
	2AX27020	WIRE,RADF	1	1	1	9
	2AX27030	UPPER WIRE	1	1	1	14
	2AX27040	WIRE,MAIN SWITCH	1	1	1	14
	2AX27050	WIRE,OPERATION UNIT	1			9

• Parts with "●" indicates the Service parts.

SP	Part. No.	Description	Quantity			Fig. No.
			120V	230V	240V	
	2AX27060	WIRE,BYPASS TRAY	1	1	1	6
	2AX68010	IC,ROM MAIN SP	1			16
	2AX68020	IC,ROM OPERATION UNIT 1 SP	1			16
	2AX68030	IC,ROM OPERATION UNIT 2 SP	1			16
	2AX68040	IC,ROM OPERATION UNIT 1 SP(EUR)		1		16
	2AX68050	IC,ROM OPERATION UNIT 2 SP(EUR)		1		16
	2A027300	IC DIMM	1	1	1	16
●	2A105180	LABEL,CAUTION CONTACT GLASS	1	1	1	9
●	2A305070	LEFT ORIGINAL SIZE INDICATOR	1	1	1	9
	2A327010	SENSOR,HUMIDITY	1	1	1	14
	2A360010	COVER,KEY COUNTER	1	1	1	16
	2A369701	SET PARTS KEYCOUNTER NEW COLOR	1	1	1	16
	20305090	LABEL,HIGH VOLTAGE CAUTION	1	1	1	7
●	28220071	SPRING,FIXING UNIT CLAW	1	1	1	12
	29127200	SOCKET (S) EL	4	4	4	16
	29705100	CAUTION LABEL,DRUM	1	1	1	7
●	29717230	BUSHING 6,FEED BACK	1	1	1	12
	29806560	BUSHING 6	1	1	1	5
●	29806810	BUSHING,6 REGISTRATION	1	1	1	12
●	29812291	CUSHION,CONTACT GLASS	9	9	9	9
	29814340	GEAR 18,DEVELOPER UNIT	1	1	1	7
	29820190	CRESCENTIC STOPPER	2	2	2	12
	29927231	POWER CODE AS(240)			1	14
	3AH07060	SPRING,BYPASS STOPPER	1	1	1	11
	3A105020	SEAL ON/OFF	1	1	1	16
	3A502010	BOTTOM BASE	1	1	1	5
	3A502020	LEFT BASE	1	1	1	5
	3A502030	REAR BASE	1	1	1	5
	3A502040	RIGHT BASE	1	1	1	5
	3A502060	FRONT JUNCTION PLATE,DESK	1	1	1	5
	3A502070	REAR JUNCTION PLATE,DESK	1	1	1	5
	3A502080	MOUNT,SIZE DETECTION SWITCH	1	1	1	5
	3A502090	MOUNT,CATCH	1	1	1	5
	3A502100	REAR JUNCTION PLATE,DESK SIDE	2	2	2	5
●	3A504010	COVER,RELEASE	1	1	1	5
	3A504020	COUPLER,RELEASE	2	2	2	5
●	3A504030	REAR COVER	1	1	1	5
	3A506010	LEFT RAIL,CASSETTE	1	1	1	5
	3A506020	GUIDE,CONVEYING	1	1	1	5
●	3A506030	ACTUATOR,CONVEYING	1	1	1	5

SP	Part. No.	Description	Quantity			Fig. No.
			120V	230V	240V	
	3A506040	MOUNT,RELEASE SWITCH	1	1	1	5
	3A506050	SHAFT,PAPER FEED	1	1	1	5
●	3A506060	ROLLER,CONVEYING	1	1	1	5
	3A506070	PULLEY,CONVEYING	2	2	2	5
	3A506080	COVER,EMPTY SWITCH	1	1	1	5
	3A506090	SPRING,PRESSING	2	2	2	5
	3A506100	FRAME,PAPER FEED	1	1	1	5
	3A506110	COVER,PAPER FEED	1	1	1	5
	3A506120	REINFORCEMENT,GUIDE	1	1	1	5
●	3A507010	COVER,CASSETTE	1	1	1	4
	3A522010	MOUNT,DRIVE	1	1	1	5
	3A522020	MOUNT,MOTOR	1	1	1	5
	3A522050	GEAR 16/52,IDLE	1	1	1	5
	3A526020	LEFT MOUNT,PCB	1	1	1	5
	3A527010	WIRE,CASSETTE	1	1	1	5
	3A568010	WIRE,HEATER	1			16
	33302080	MOUNT M3	2	2	2	11
	33906630	STOPPER 5,RING	2	2	2	16
	33906640	RIGHT SPRING,FEED RELEASE	1	1	1	7
	33906670	RIGHT HOOK,FEED RELEASE	2	2	2	7
●	33906990	SWITCH,BYPASS SIZE DETECTION	1	1	1	6
	33907110	TERMINAL,PAPER SIZE PCB	1	1	1	6
	33910230	PIN CHARGER	1	1	1	11
●	33914190	TONER SENSOR	1	1	1	11
●	33915190	TONER MOTOR	1	1	1	2
●	33928111	SIZE DETECTION PCB	1	1	1	6
●	33960020	HEATER,CASSETTE (240)		1	1	16
	34806150	STOPPER 5	8	8	8	6,12,13
	34806480	STOPPER 6	1	1	1	16
●	34821100	STATIC ELIMINATOR,EJECT	1	1	1	7
●	34860030	HEATER,CASSETTE(120)	1			16
●	34907060	LEVER,CURSOR RETAINING	2	2	2	3,4
	34907070	PIN,CLAW CASSETTE	4	4	4	3,4
	34907141	GEAR 18,CASSETTE	2	2	2	3,4
	34907380	SPRING,CASSETTE	4	4	4	3,4
	34909050	FRONT GROUND PLATE,DRUM DRIVE	1	1	1	11
	34918200	SPRING,THRUST	1	1	1	11
	34922570	GEAR 23,DEVELOPING	2	2	2	11
	34922590	SPRING,DRUM DRIVE	1	1	1	13
	35322020	GEAR 20,PAPER FEED DRIVE	1	1	1	11

• Parts with "●" indicates the Service parts.

2AV/2AX

SP	Part. No.	Description	Quantity			Fig. No.
			120V	230V	240V	
●	35327400	SWITCH,FEED	3	3	3	5,9,12
	35904240	AUXILIARY PLATE,CONVEYING UNIT	1	1	1	1
●	35906090	GEAR 15,REGISTRATION	1	1	1	6
	35906590	SPRING,REGISTRATION	1	1	1	7
●	35907091	CURSOR,PAPER TRAILING EDGE	2	2	2	3,4
	35907132	PROJECTION,SIDE REGISTRATION DETECTION	2	2	2	3,4
●	35907171	MOUNT BASE,TRAILING EDGE CURSOR	2	2	2	3,4
●	35911720	GROUND PLATE,PAPER FEED ADF	1	1	1	14
●	35912010	CONTACT GLASS	1	1	1	9
●	35912060	PULLEY,SCANNER DRUM	2	2	2	9
	35912200	STANDARD PLATE,SHADING	1	1	1	9
	35912210	SPRING,MIRROR HOLDER	6	6	6	9
	35912360	GUIDE FFC2	1	1	1	9
●	35912490	FRONT ORIGINAL SIZE INDICATOR	1	1	1	9
●	35912531	SPONGE,ORIGINAL SIZE INDICATOR	1	1	1	9
	35914820	BEARING,DEVELOPING	1	1	1	11
●	35920130	BEARING,PRESSURE	2	2	2	12
●	35920140	SPRING,PRESSURE	2	2	2	12
●	35920150	CLAW,SEPARATION	5	5	5	12
●	35920240	GEAR 35,HEAT ROLLER	1	1	1	12
●	35920350	BUSHING,HEAT ROLLER	2	2	2	12
●	35923010	FAN,COOLING	3	3	3	14,15
	35927290	SENSOR,ORIGINAL DETECTION	2	2	2	9,16
●	35927420	SWITCH,SIZE	10	10	10	2,5,11
●	36027020	MOTOR,CASSETTE	1	1	1	5
●	36093040	PARTS MOTOR DRIVE PCB(SP)	1	1	1	5
	36505111	LABEL,TONER DISPOSAL TANK	1	1	1	16
	41525016	SOCKET,KEY COUNTER	1	1	1	16
	41529105	PLUG EL 4P	1	1	1	16
	41529210	SOCKET ASS'Y,KEY COUNTER	1	1	1	16
	45727502	GEAR,TONER MOTOR	1	1	1	2
	45729401	GEAR 20,S,B	3	3	3	13
	48128107	PIN,CLEANING BLADE	1	1	1	1
	48129208	PIN,TENSION	1	1	1	2
	48527200	SPRING,CHARGER	1	1	1	11
	48528216	SPRING,PAPER GUIDE	1	1	1	12
●	49028101	BUSH 8	5	5	5	6
	49028112	BUSHING 8,LOWER REG.ROLLER	1	1	1	5
●	49028113	BUSHING 6-19,DEV.UNIT	2	2	2	11
	49628105	RECEIVER,MAGNET	3	3	3	2,5

• Parts with "●" indicates the Service parts.

SP	Part. No.	Description	Quantity			Fig. No.
			120V	230V	240V	
●	60606101	BUSHING FEED BACK ROLLER	2	2	2	7
●	60904280	ORIGINAL POCKET	1	1	1	8
●	60904310	HINGE,ORIGINAL HOLDER	2	2	2	8
	62207620	MAGNET,FEED SHIFT	2	2	2	5
	63505130	LABEL,RAIL	1	1	1	11
	63516160	SPRING,TRANSFORMER TERMINAL	2	2	2	10
	63706260	SPRING,STACK BYPASS GEAR	5	5	5	12
●	63720211	THERMOSTAT,FIXING	1	1	1	12
	63814060	GEAR 20,AGITATION	1	1	1	11
●	63818250	REAR BUSHING,TONER DISPOSAL ROLLER	2	2	2	11
●	65027360	SWITCH,EMPTY	2	2	2	5,6
	65027470	CORE,7-15X18	2	2	2	14
	65907480	SLIDER,CASSETTE	2	2	2	16
	65914120	GEAR 18,IDLE DEVELOPING	1	1	1	6
	66012180	ACTUTATION PLATE,ORIGINAL DETECTION	1	1	1	8
●	66022190	GEAR,21 DEVELOPING	1	1	1	12
	66060022	RETAINER,KEY COUNTER COVER	1	1	1	16
	66060030	RETAINER,KEY COUNTER	1	1	1	16
	66060040	MOUNT,KEY COUNTER	1	1	1	16
●	66260030	BASE RUBBER,Sorter	4	4	4	2,5
	67322230	BUSHING 8	1	1	1	5
	68802070	SPRING A,LIFT UP	2	2	2	3,4
	68802160	SPRING,RETAINING	5	5	5	7
	68814720	SPRING B,DOCTOR BLADE	1	1	1	12
●	68822330	BEARING,DRIVE	2	2	2	13
	69312110	PLATE SPRING,ORIGINAL HOLDER	2	2	2	8
	71804400	MAGNET,LOWER FRONT COVER	2	2	2	1
	71821390	IDLE GEAR 48	1	1	1	2
	72112520	TENSION SPRING,SCANNER WIRE	2	2	2	9
●	72127100	PI SWITCH,OPTICAL SECTION	1	1	1	9
	72320210	LOWER GEAR, EJECT IDLE	1	1	1	11
	72914480	REAR BUSHING,DEVELOPING ROLLER (B)	2	2	2	9
	72919050	GEAR 12/15,RECYCLE SECTION	1	1	1	11
●	73210370	GEAR 18,LOOP	1	1	1	7
●	73210450	BUSH, 6	4	4	4	5,6,13
	73818100	SPRING, BLADE THRUST	2	2	2	2
●	73922250	IDLE GEAR A,PF SECTION	1	1	1	12
●	76202270	LEFT BUSHING FULCRUM SHAFT	2	2	2	7
	76508130	SPRING BELT GUIDE ROLLER	2	2	2	3,4
●	77906200	CASSETTE CATCHER	2	2	2	2,5

SP	Part. No.	Description	Quantity			Fig. No.
			120V	230V	240V	
●	77906210	CASSETTE STOPPER	2	2	2	3,4
●	79904140	ORIGINAL HOLDER SPACER	2	2	2	8
	B2303060	COUNTER-SUNK HEAD SCREW BFHM3X6 (BLACK)	2	2	2	16
	B4104060	TRIPLE SCREW M4X6(CHROMIUM)	1	1	1	16
	B4304060	TRIPLE SCREW M4X6 (BLACK)	4	4	4	16
	B4304100	TRIPLE SCREW M4X10 (BLACK)	2	2	2	16
	C2303000	NUT BNM3 (BLACK)	1	1	1	16
	J0074010	POSITIVE CONNECTOR,#250,172076-1	2	2	2	14
	J0074910	POSITIVE CONTACTOR,#250,170334-1	2	2	2	14
	J0110020	PLUG 2P,MINI MATENLOCK,VO,172165-1	1	1	1	14
	J0388460	RECEPTACLE,52918-4615(MOLEX)	1	1	1	9
	J0455020	CASE,DF3-2EP-2A(HIROSE)	1	1	1	2
	L0023070	ROUND TYPE TERMINAL,173636-1	1	1	1	14
	M1658010	FUSE,218008(LITTEL-FUSE)		2	2	14
	M1661000	FUSE 15A,314015	1			14
	M2104200	EDGING EDS-1	1	1	1	14
	M2104210	EDGING,EDS-2	2	2	2	9
	M2104220	EDGING,EDS-1717U	5	5	5	9,14
	M2104250	EDGING,EDS-17L(KITAGAWA)	1	1	1	14
	M2104350	EDGING,EDS-0607M(KITAGAWA)	4	4	4	2,13,14
	M2105030	NYLON CLAMP 5N,NK-5N	1			16
	M2105400	CLAMP,K-103G	2	2	2	14
	M2105710	MINIATURE CLAMP,UAMS-05-0	1	1	1	5
	M2105730	MINIATURE CLAMP,UAMS-07-0	6	6	6	13,14
	M2105740	MINIATURE CLAMP,UAMS-05S-2	2	2	2	16
	M2107240	BAND,KI-100(KITAGAWA)	1	1	1	14
	M2109000	WIRE SADDLE,WS-1NS	4	4	4	14
	M2109010	WIRE SADDLE,WS-2NS	6	6	6	2,13,14,16
	M2109340	WIRE SADDLE,YMC-05-0(KITAGAWA)	2	2	2	16
	M2407010	BINDING BAND SK,SKB-100	2	2	2	14
	M2505190	CLAMP,GNK-4N(NIKKO)	1	1	1	14
	M2607010	BINDING BAND,PLT1M	2	1	1	5,16
	M5554020	FUSE,SS1-250V-4A(SOC)		1	1	14
	M5558000	FUSE,UL-TSC-8A-N1(S.O.C)	1			14
	M7009010	WIRE SADDLE,LWS-2N-VOF(TAKEUCHI)	1	1	1	14

• Parts with "●" indicates the Service parts.

CLASSIFICATION OF THE SCREWS IN ILLUSTRATION

<u>REF.</u>	<u>ITEM #</u>	<u>DESCRIPTION</u>	<u>REF.</u>	<u>ITEM #</u>	<u>DESCRIPTION</u>	<u>REF.</u>	<u>ITEM #</u>	<u>DESCRIPTION</u>
ADF	B4093060	PEDESTALHEAD TAP-TITE SCREW(CHROMATING)M3X06	BVV	B1324080	BINDING SCREW WITH SW (BLACK) M4X8	HDE	B4143080	+TP TRIPLE TAP-TITE P SCREW M3X08(CR)
AWA	B0323060	ROUND HEAD SCREW WITH SW.W M3X6 (BLACK)	CAB	B2003050	COUNTER-SUNK HEAD SCREW FHM3X5	HDG	B4343100	TRIPLE TAP-TITE P SCREW M3X10(BLACK)
BAA	B1003040	BINDING SCREW,CVM3X4	CGD	B2203100	CONTER-SUNK HEAD SCREW M3X10	HDH	B4903080	TRIPLE SCREW M3X8 (BLUE),A-TYPE
BAS	B1000030	BINDING SCREW CVM 2.6X03	CIB	B8073080	FLAT HEAD TAP-TITE P SCREW M3X08	HDI	B4344060	TRIPLE TAP-TITE P SCREW M4X6(BRONZE)
BAX	B1004040	BINDING SCREW CVM4X4	E03	D1000300	STOP RING (E-3)	KAK	E0020080	SPRING PIN 2X8
BBB	B1303050	BINDING SCREW BVM3X5 (BLACK)	E04	D1000400	STOP RING (E-4)	KAL	E0020100	SPRING PIN 2X10
BBC	B1303100	BINDING SCREW BVM3X10 (BLACK)	E05	D1000500	STOP RING (E-5)	KAM	E0020120	SPRING PIN 2X12
BBE	B1304060	BINDING SCREW BVM4X6 (BLACK)	E06	D1000600	STOP RING (E-6)	KAN	E0020140	SPRING PIN 2X14
BBF	B1304080	BINDING SCREW BVM4X8 (BLACK)	E07	D1000700	STOP RING (E-7)	KAO	E0020160	SPRING PIN 2X16
BBQ	B1300100	BINDING SCREW BVM2.3X10 (BLACK)	GEA	B9604080	GROUNDING SCREW M4X8 (BRASS,N;)	KAY	E0030180	SPRING PIN 3X18
BBR	B1303080	BINDING SCREW BVM3X8 (BLACK)	HAD	B4003050	TRIPLE SCREW M3X05	KBE	E0120220	SPRING PIN 2X22(SUS)
BCF	B1104080	BINDING SCREW VM4X8 (CR)	HAM	B4064100	TRIPLE TAPPING SCREW M4X10	KBF	E0120240	SPRING PIN 2X24(SUS)
BEA	B1603050	BINDING SCREW M3X5 (BRASS,NI)	HAT	B4144080	+TP TAP-TITE P SCREW(CHROMIUM)	KBG	E0025140	SPRING PIN 2.5X14
BEB	B1603060	BINDING SCREW M3X6 (BRASS,NI)	HAU	B4043080	TRIPLE TAP-TITE P SCREW M3X08	KFA	E5120080	SPRING PIN H7A 2X8 SUS
BHF	B3314080	BINDING TAP-TITE P SCREW M4X08	HAZ	B4143100	+TP TRIPLE TAP-TITE P SCREW M3X10(CR)	KFB	E5120120	SPRING PIN H7A 2X12 SUS
BHI	B3313080	BINDING TAP-TITE SCREW M3X08	HBA	B4303050	TRIPLE SCREW M3X5 (BLACK)	KFI	E5130300	PARALLEL PIN H7A 3X30 SUS
BHJ	B8313160	BINDING TAP-TITE SCREW M3X16	HBB	B4303100	TRIPLE SCREW M3X10 (BLACK)	KKH	E0120200	SPRING PIN 2X20(SUS)
BHO	B3313100	BINDING TAP-TITE P BRONZE SCREW M3X10	HBC	B4304060	TRIPLE SCREW M4X6 (BLACK)	NAD	C1004000	NUT NM4
BHP	B8314120	BINDING TAP-TITE P BRONZE SCREW M4X12	HBD	B4304060	TRIPLE SCREW M4X6 (BLACK)	RDE	D4000500	STOP RING CSTW-5
BHT	B8313060	BINDING TAP-TITE P SCREW M3X06	HBI	B4303080	TRIPLE SCREW M3X8(BLACK)	WEB	C2603080	PLAIN WASHER M3-8 (BRASS,N:)
BMB	B1000080	BINDING SCREW CVM2.6X8	HBR	B4303140	TRIPLE SCREW M3X14(BLACK)	WPB	C2806120	POLYESTER SLIDER WASHER 6.2X12X0.5T
BMC	B1000120	BINDING SCREW CVM2.3X12	HCB	B4103050	TRIPLE SCREW M3X05 (CHROMIUM)	WPD	C2804060	POLY-SLIDER WASHER 4.2X6.5X1.0T
BMF	B1003140	BINDING SCREW CVM3X14	HDA	B4343060	TRIPLE TAP-TITE P SCREW M3X06(BLACK)	XBC	C2893950	SHIM 6.2-0.25T
BUA	B3314100	BINDING TAP-TITE P BRONZE SCREW M4X10	HDB	B4343080	TRIPLE TAP-TITE P SCREW M3X08(BLACK)	XDG	C2895140	SHIM 8.2X0.8T

KYOCERA MITA EUROPE B.V.

Hoeksteen 40, 2132 MS Hoofddorp,
The Netherlands
Phone: (020) 6540000
Home page: <http://www.kyoceramita-europe.com>
Email: info@kyoceramita-europe.nl

KYOCERA MITA NEDERLAND B.V.

Gyroscoopweg 122, 1042 AZ Amsterdam,
The Netherlands
Phone: (020) 5877200

KYOCERA MITA (U.K.) LTD.

Mita House, Hamm Moor Lane,
Addlestone, Weybridge,
Surrey KT15 2SB, U.K.
Phone: (01932) 858266

KYOCERA MITA ITALIA S.P.A.

Via Marconi 8, 20041 Agrate Brianza,
Milano, Italy
Phone: (039) 65641

S.A. KYOCERA MITA BELGIUM N.V.

Hermesstraat 8A 1930 Zaventem, Belgium
Phone: (02) 7209270

KYOCERA MITA FRANCE S.A.R.L.

1 Rue Pelloutier,
77183 Croissy Beaubourg, France
Phone: (1) 60175152

KYOCERA MITA ESPAÑA S.A.

Edificio Mita, Avda. De Manacor Nº 2,
Urb. Parque Rozas, Apartado De Correos 76,
28230 Las Rozas, Madrid, Spain
Phone: 34-91-631-8392

KYOCERA MITA FINLAND OY

Kirvesmiehenkatu 4, 00810 Helsinki,
Finland
Phone: (09) 478 05200

KYOCERA MITA (SCHWEIZ) AG

Hölzliwisen Industriestrasse 28,
8604 Volketswil, Switzerland
Phone: (01) 9084949
KYOCERA MITA DEUTSCHLAND GMBH
Industriestrasse 17, D-61449 Steinbach/TS,
Germany
Phone: (06171) 7005-0

KYOCERA MITA GMBH AUSTRIA

Eduard Kittenberger Gasse 95
A-1230 Wien, Austria
Phone: (01) 86338 210

KYOCERA MITA SVENSKA AB

Siktgatan 2
162 26 Vällingby, Sweden
Phone: (08) 4719999

KYOCERA MITA DANMARK A/S

Industrivej 11, DK-4632 Bjæverskov,
Denmark
Phone: 56871100

KYOCERA MITA PORTUGAL LDA.

CASCAISTOCK-Armazem nº8,
Rua das Fiskas, Alcoitão,
2765 Estoril, Portugal
Phone: 1-4602221

KYOCERA MITA SOUTH AFRICA (PTY) LTD.

Unit 3, "KYALAMI CRESCENT",
KYALAMI BUSINESS PARK,
1685 Midrand, South Africa
Phone: (011) 4663290

KYOCERA MITA AMERICA, INC.

Headquarters:
225 Sand Road, P.O. Box 40008
Fairfield, New Jersey 07004-0008
U.S.A.
Phone: (973) 808-8444

KYOCERA MITA ASIA OCEANIA SALES DIVISION

2-28, 1-chome, Tamatsukuri, Chuo-ku,
Osaka 540-8585, Japan
Phone: (06) 6764-3668

KYOCERA MITA AUSTRALIA PTY.LTD.

P.O. Box 211,
Regents Park Estate Unit 2,
Block V 391 Park Road,
Regents Park N.S.W. 2143, Australia
Phone: 61-2-9645-5100

KYOCERA MITA NEW ZEALAND LTD.

5 Howe Street, Newton, Auckland 1,
P.O. Box 68343,
Auckland, New Zealand
Phone: (09) 377-2088

KYOCERA MITA (THAILAND) CORP., LTD.

9/209 Ratchada-Prachacheun Road,
Bang Sue, Bangkok 10800, Thailand
Phone: (02) 586-0333

KYOCERA MITA SINGAPORE PTE LTD.

121 Genting Lane, 3rd. Level,
Singapore 349572
Phone: 65-7418733

KYOCERA MITA HONG KONG LIMITED.

11/F., Mita Centre,
552-566 Castle Peak Road,
Tsuen Wan, New Territories,
Hong Kong
Phone: 852-2423-2163

KYOCERA MITA CORPORATION

2-28, 1-chome, Tamatsukuri, Chuo-ku,
Osaka 540-8585, Japan
Phone: (06) 6764-3555
Fax: (06) 6764-3981

© 2000 KYOCERA MITA CORPORATION

 is a trademark of Kyocera Corporation

mita is a registered trademark of KYOCERA MITA CORPORATION

Printed in Holland