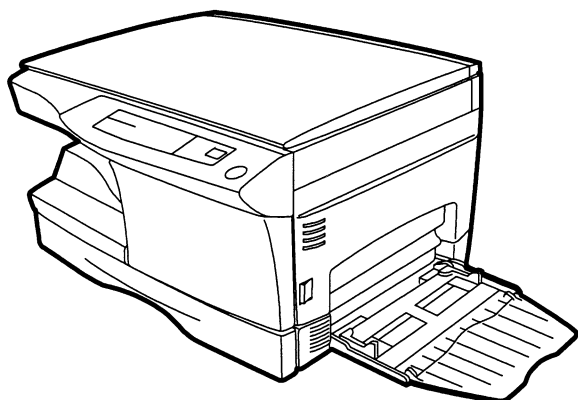


# SHARP PARTS GUIDE



## DIGITAL COPIER

# AR-120E MODEL AR-150E

### CONTENTS

- |   |                                    |
|---|------------------------------------|
| 1 Exteriors                               | 18 Multi manual paper feeding unit |
| 2 Original cover unit                     | 19 Socket Holder unit              |
| 3 Operation panel                         | 20 TC case unit                    |
| 4 Side Door unit                          | 21 250 sheets tray                 |
| 5 Optical Frame 1                         | 22 Harness                         |
| 6 Optical Frame 2                         | 23 Packing material & Accessories  |
| 7 LSU unit                                | 24 MCU PWB                         |
| 8 Mirror Holder unit                      | 25 Operation PWB                   |
| 9 Delivery paper guide unit               | 26 MFD sensor PWB                  |
| 10 Middle Frame                           | 27 POD sensor PWB                  |
| 11 Base plate unit 1                      | 28 PPD1 sensor PWB                 |
| 12 Base plate unit 2                      | 29 PPD2 sensor PWB                 |
| 13 Fusing unit                            | 30 DC power supply PWB             |
| 14 Drive unit                             | 31 DV cartridge unit               |
| 15 Single Manual Paper Feeding cover unit |                                    |
| 16 Multi Manual Paper feeding cover unit  |                                    |

**SHARP CORPORATION**

This document has been published to be used for after sales service only.  
The contents are subject to change without notice.

## DEFINITION

The definition of each Rank is as follows and also noted in the list

- A : Parts necessary to be stocked as High usage parts.
- B : Parts necessary to be stocked as Standard usage parts.
- C : Low usage parts.
- D : Parts necessary for refurbish.
- E : Unit parts recommended to be stocked for efficient after sales service.  
Please note that the lead time for the said parts may be longer than normal parts.
- S : Consumable parts.

Please note that the following parts used in Copier under the same description are classified into A or B Rank depending upon the place used.

Example : Gear made of Metal, Sprocket, Bearing, Belt made of Rubber, Spring clutch mechanism.

A Rank : The parts which may be with the revolution or loading.

B Rank : Parts similar to A Rank parts, but are not included in Rank A.

Because parts marked with "△" is indispensable for the machine safety maintenance and operation, it must be replaced with the parts specific to the product specification.

- Other than this Parts Guide, please refer to documents Service Manual (including Circuit Diagram) of this model.
- Please use the 13 digit code described in the right hand corner of front cover of the document, when you place an order.
- For U.S. only-Use order codes provided in advertising literature. Do not order from parts department.

## 1 Exteriors

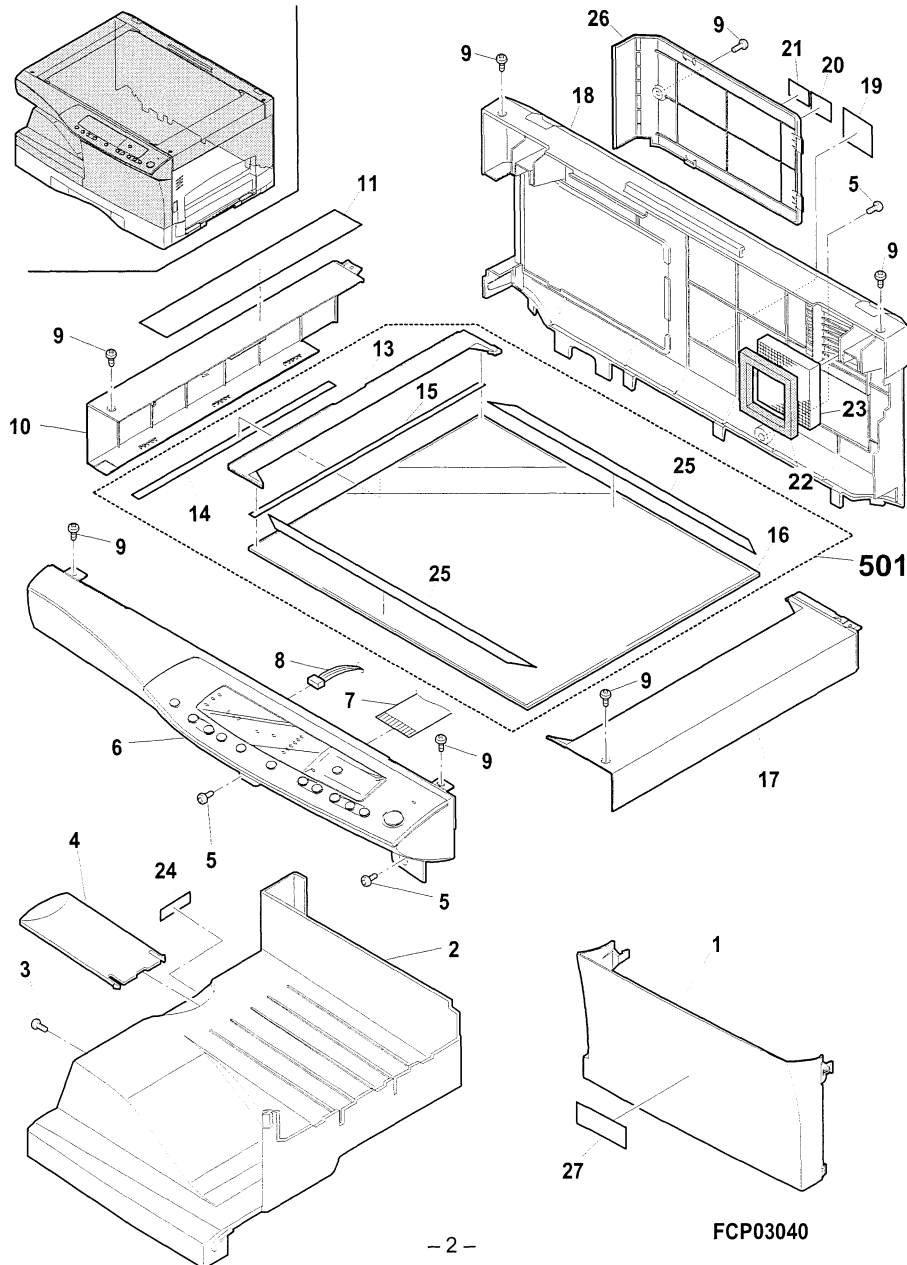
NO.	PARTS CODE	PRICE RANK		NEW MARK	PART RANK	DESCRIPTION
		Ex.	Ja.			
1	CCAB-0003QS01	AR	EQ	N	D	Front cover (Japan only)
	GCAB-0003QSZA	AS	EZ	N	D	Front cover (For Europe)
	GCAB-0003QSZZ	AP	EQ	N	D	Front cover (Except Europe, Japan)
2	LSOU-0001QSZZ	AW	FG	N	D	Delivery tray (Except Europe)
	LSOU-0001QSZA	AX	FG	N	D	Delivery tray (For Europe)
3	XEBSE30P08000	AA	DD		C	Screw (3x8)
4	LSOU-0008QSZZ	AH	DX	N	D	Extension tray (Except Europe)
	LSOU-0008QSZA	AH	DX	N	D	Extension tray (For Europe)
5	XEBSE40P12000	AA	DD		C	Screw (4x12)
6	CPNLC0002QS03	AV	FG	N	D	Operation panel (Except Europe)
	CPNLC0002QS04	AW	FG	N	D	Operation panel (For Europe)
	CPNLC0002QS01	AV	FG	N	D	Operation panel (Japan only)
	CPNLC0002QS08	AW	FG	N	D	Operation panel (For Europe)
	CPNLC0002QS07	AV	FG	N	D	Operation panel (Except Europe)
7	DHA i-0040QSZZ	AK	DX	N	C	OP harness
8	DHA i-0049QSZZ	AG	DS	N	C	D-RST harness
9	XBBSE30P08000	AA	DD		C	Screw (3x8)
10	GCAB-0005QSZZ	AN	EG	N	D	Left exterior (Except Europe)
	GCAB-0005QSZA	AN	EQ	N	D	Left exterior (For Europe)
13	CF i X-0003QS01	AN	EG	N	C	Glass fixing plate (Japan only)
	CF i X-0003QS04	AN	EG	N	C	Glass fixing plate (For Europe)
	CF i X-0003QS02	AN	EG	N	C	Glass fixing plate (Except Europe, Japan)
14	PSHEZ0026QSZZ	AE	DJ	N	C	Sheet
15	PSHEZ0027QSZZ	AC	DJ	N	C	Table glass fixing sheet
16	PGLSP0001QSZZ	AX	FG	N	B	Table glass
17	GCAB-0006QSZZ	AN	EQ	N	D	Right exterior (Except Europe)
	GCAB-0006QSZA	AN	EQ	N	D	Right exterior (For Europe)
18	GCAB-0021QSZZ	AY	FQ	N	D	Rear exterior (Except Europe)
	GCAB-0021QSZA	AY	FQ	N	D	Rear exterior (For Europe)
19	TCAUA0770FCZZ	AB	DD		C	Service caution label (Except Japan)

## 1 Exteriors

NO.	PARTS CODE	PRICE RANK		NEW MARK	PART RANK	DESCRIPTION
		Ex.	Ja.			
20	TLABZ0058QSZZ	AD	DJ	N	C	Class 1 label (For Europe,Australia)
21	TLABH0264GCZZ	AC	DJ		C	Service man label (For Europe)
22	PMLT-0024QSZZ	AC	DJ	N	C	Fan cushion
23	PFILZ0002QSZZ	AL	EB	N	B	Ozone filter
24	TLABH0055QSZZ	AE	DS	N	C	Power supply label (Japan only)
25	PSHEZ0079QSZZ	AD	DJ	N	C	Table glass sheet
26	PCOVP0035QSZZ	AL	EB	N	D	Rear exterior cover (Except Europe)
	PCOVP0035QSZA	AL	EB	N	D	Rear exterior cover (For Europe)
27	TLABM0067QSZZ	AD	DJ	N	C	Digital mark label (USA only)
501	CFIX-0003QS51	AZ	FQ	N	E	Table unit (Japan only)
	CFIX-0003QS54	BA	FX	N	E	Table unit (For Europe)
	CFIX-0003QS52	BA	FX	N	E	Table unit (Except Europe,Japan)

NO.	PARTS CODE	PRICE RANK	NEW MARK	PART RANK	DESCRIPTION
11	TLABH0167QSZZ	AF		C	Operation instruction label (Except Russia,LAG2,LAG4,Pakistan,Philippines)
	TLABH0214QSZZ	AG	N	C	Operation instruction label (Russian)
20	TLABZ0058QSZZ	AD		C	Class 1 label (Except Brazil,LAG2)

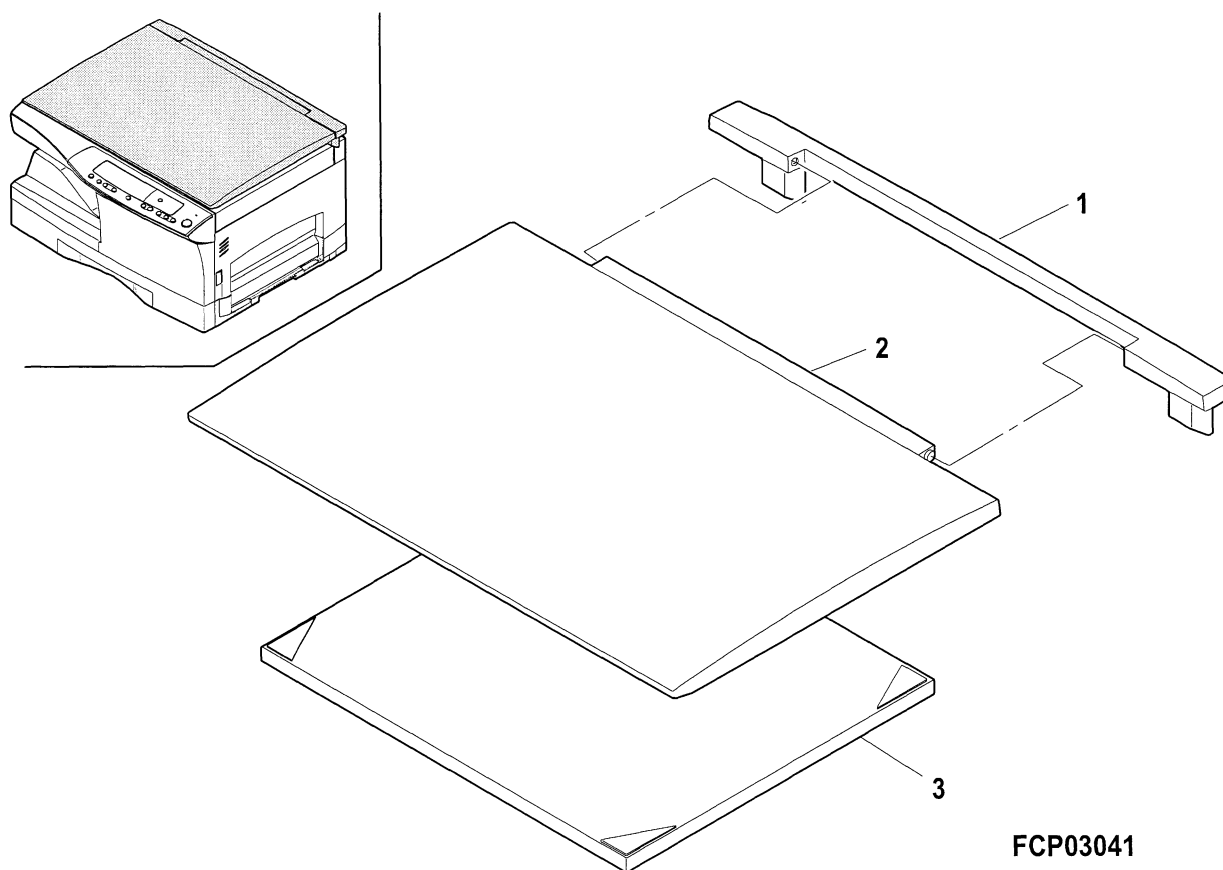
## 1 Exteriors



## 2 Original cover unit

NO.	PARTS CODE	PRICE RANK		NEW MARK	PART RANK	DESCRIPTION
		Ex.	Ja.			
1	GCÖVH0003QSZZ	AM	EG	N	D	OC cover S
2	GCÖVH0004QSZZ	AX	FG	N	D	OC cover M
3	PSHEZ0034QSZZ	AV	FG	N	C	OC sheet
	(Unit)					
901	CCÖVH0004QS51	BC	GD	N	E	OC cover unit

## 2 Original cover unit



FCP03041

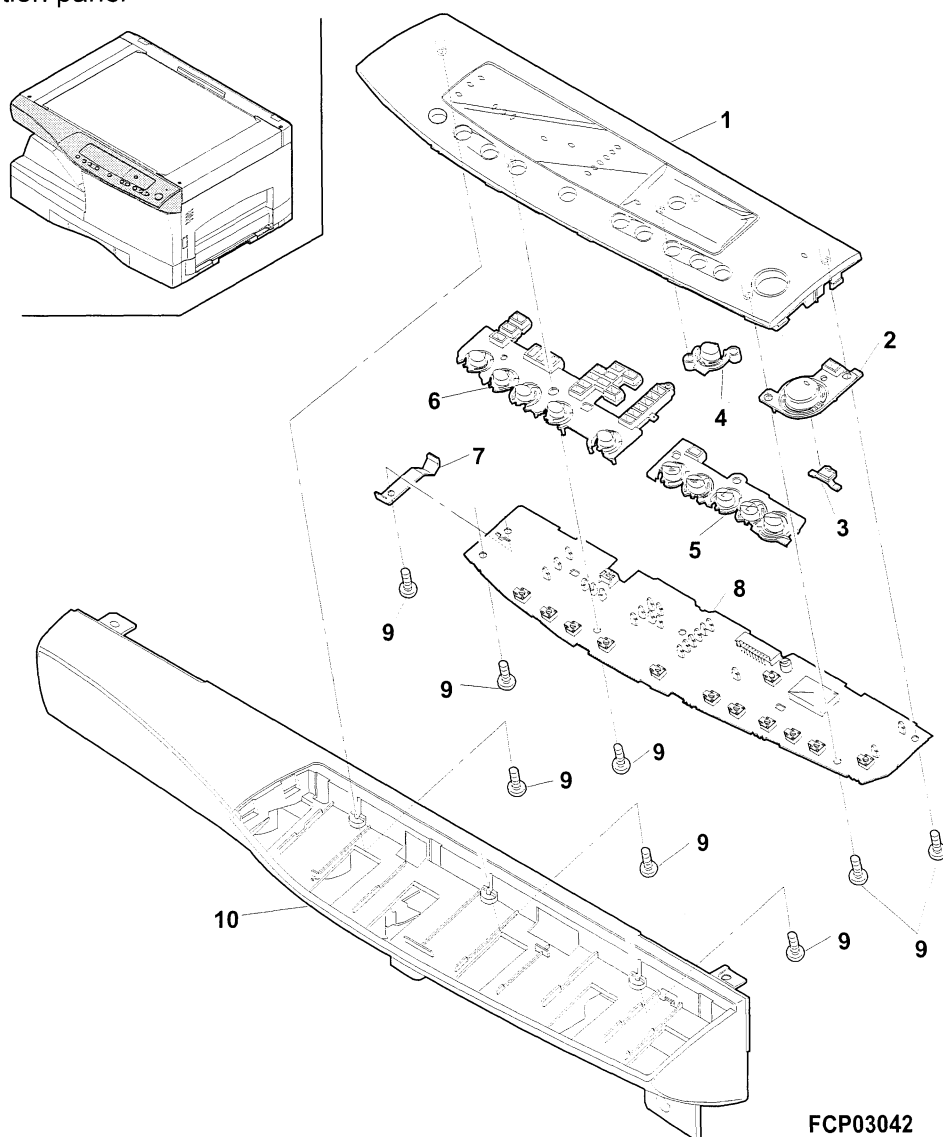


### 3 Operation panel

NO.	PARTS CODE	PRICE RANK		NEW MARK	PART RANK	DESCRIPTION
		Ex.	Ja.			
2	CBTN-0009QS01	AG	DS	N	C	Copy key
3	JBTN-0010QSZZ	AC	DJ	N	C	Copy key smoke
4	JBTN-0005QSZZ	AC	DJ	N	C	Percent key
7	MSPRP0015QSZZ	AC	DJ	N	C	Operation PWB earth spring
8	CPWBF0014QS52	BR	LX	N	E	Operation PWB
9	XEBSE30P08000	AA	DD		C	Screw (3x8)

NO.	PARTS CODE	PRICE RANK	NEW MARK	PART RANK	DESCRIPTION
1	P F i L Z 0 0 0 7 Q S 1 3	AS		B	Filter (Inch series)(LAG4,LAG2,L2,L4)
	P F i L Z 0 0 0 7 Q S 1 2	AS	N	B	Filter (Inch series)(Pakistan,Philippines)
	P F i L Z 0 0 0 7 Q S Z 8	AS	N	B	Filter (AB series)
5	CBTN-0004QS04	AG		C	Operation key R
6	JBTN-0008QSZ1	AG		C	Operation key L
10	CPNL C 0 0 0 2 Q S 4 8	AV	N	D	Operation panel (AR-150E)
	CPNL C 0 0 0 2 Q S 4 9	AV	N	D	Operation panel (AR-120E)

### 3 Operation panel

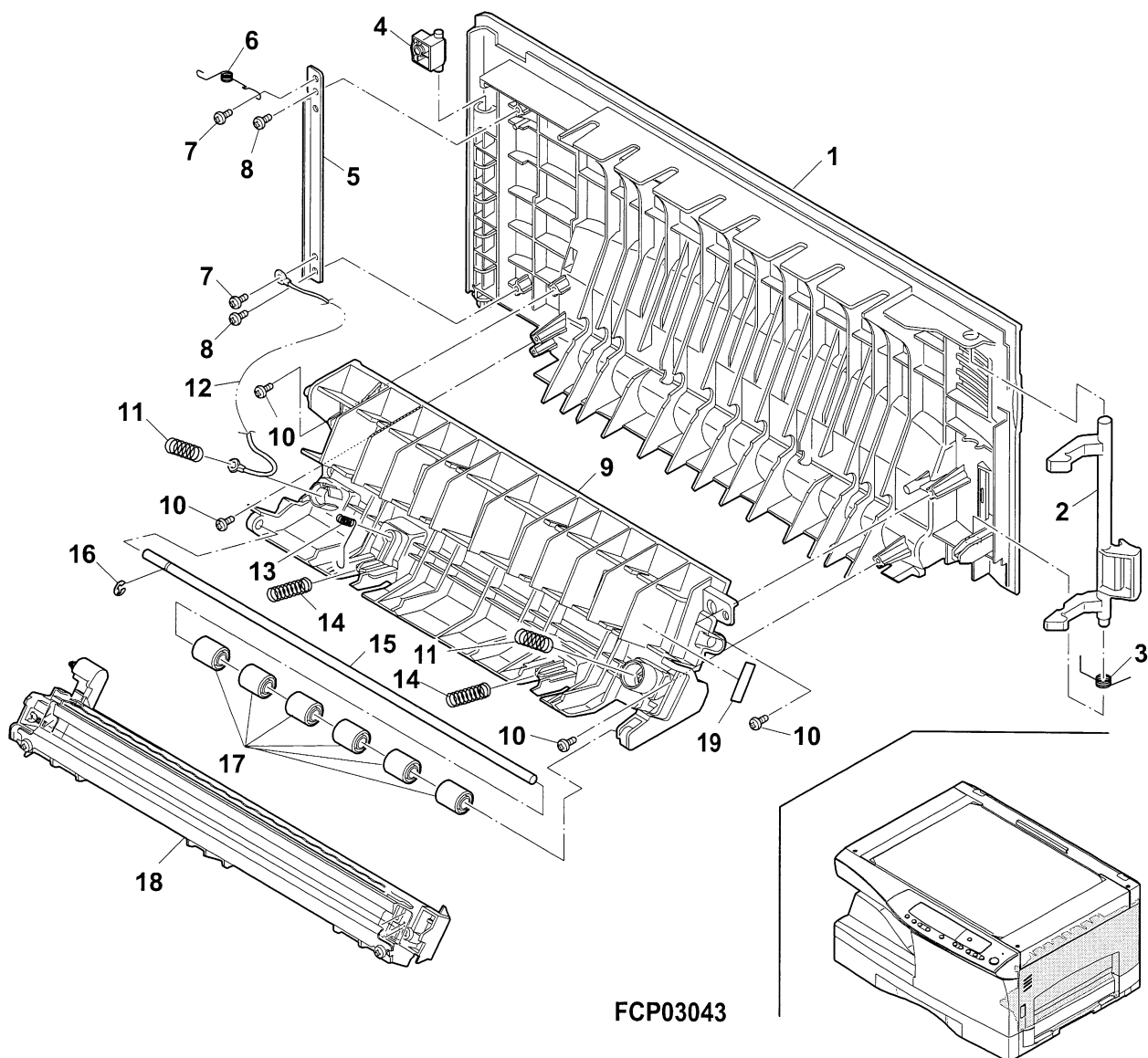


#### 4 Side Door unit

NO.	PARTS CODE	PRICE RANK		NEW MARK	PART RANK	DESCRIPTION
		Ex.	Ja.			
1	GCAB-0007QSZZ	AU	EZ	N	D	Side door (Except Europe)
	GCAB-0007QSZA	AV	FG	N	D	Side door (For Europe)
2	PTME-0004QSZZ	AG	DX	N	C	Lock pawl
3	MSPRT0029QSZZ	AC	DJ	N	C	Lock pawl spring
4	PGIDM0008QSZZ	AD	DJ	N	C	Hinge guide
5	LPLTM0043QSZZ	AD	DJ	N	C	Earth plate
7	XHBSE30P06000	AA	DD		C	Screw (3x6)
8	XEBSE30P06000	AA	DD		C	Screw (3x6)
10	XEBSD30P10000	AA	DD		C	Screw (3x10)
11	MSPRC0032QSZZ	AB	DJ	N	C	Transcription pressure spring
12	DHAi-0047QSZZ	AH	DX	N	C	TCFB harness
13	MSPRC0031QSZZ	AB	DJ	N	C	PS earth spring
14	MSPRC0030QSZZ	AC	DJ	N	C	PS pressure spring
16	XRESP30-06000	AA	DD		C	E type ring
17	NR0LP1122FCZZ	AF	DS		C	PS upper roller
19	TCAUH0819FCZZ	AA	DD		C	HT caution label (Japan only)

NO.	PARTS CODE	PRICE RANK	NEW MARK	PART RANK	DESCRIPTION
6	MSPRD0076QSZ1	AD		C	Earth spring
9	LFRM-0003QSZ1	AP		C	Side door inner frame
15	NSFTZ0006QSZ1	AG		C	PS shaft
18	CHLDZ0010QS52	AU		E	Transcription holder unit

4 Side Door unit

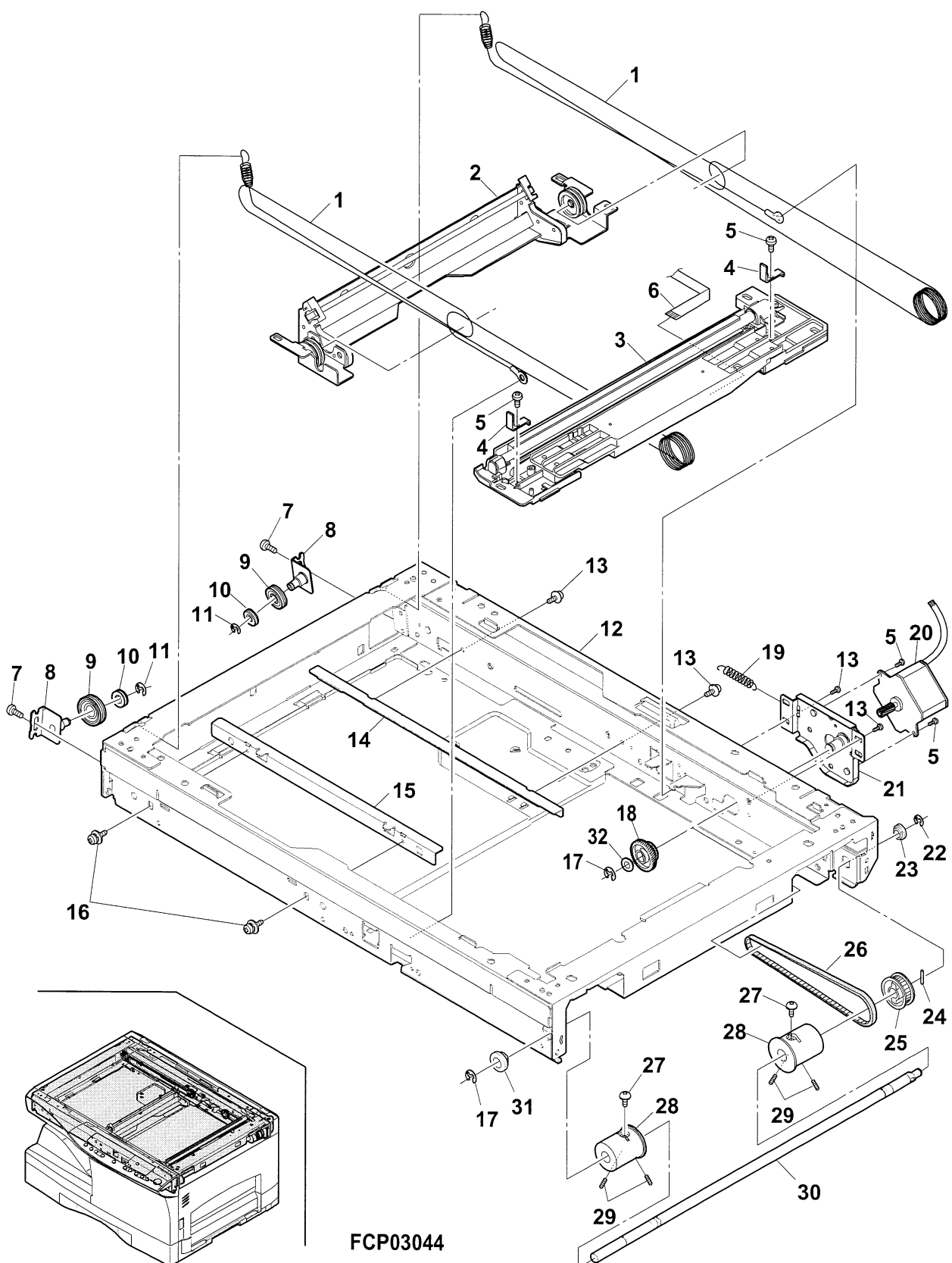


5 Optical Frame 1

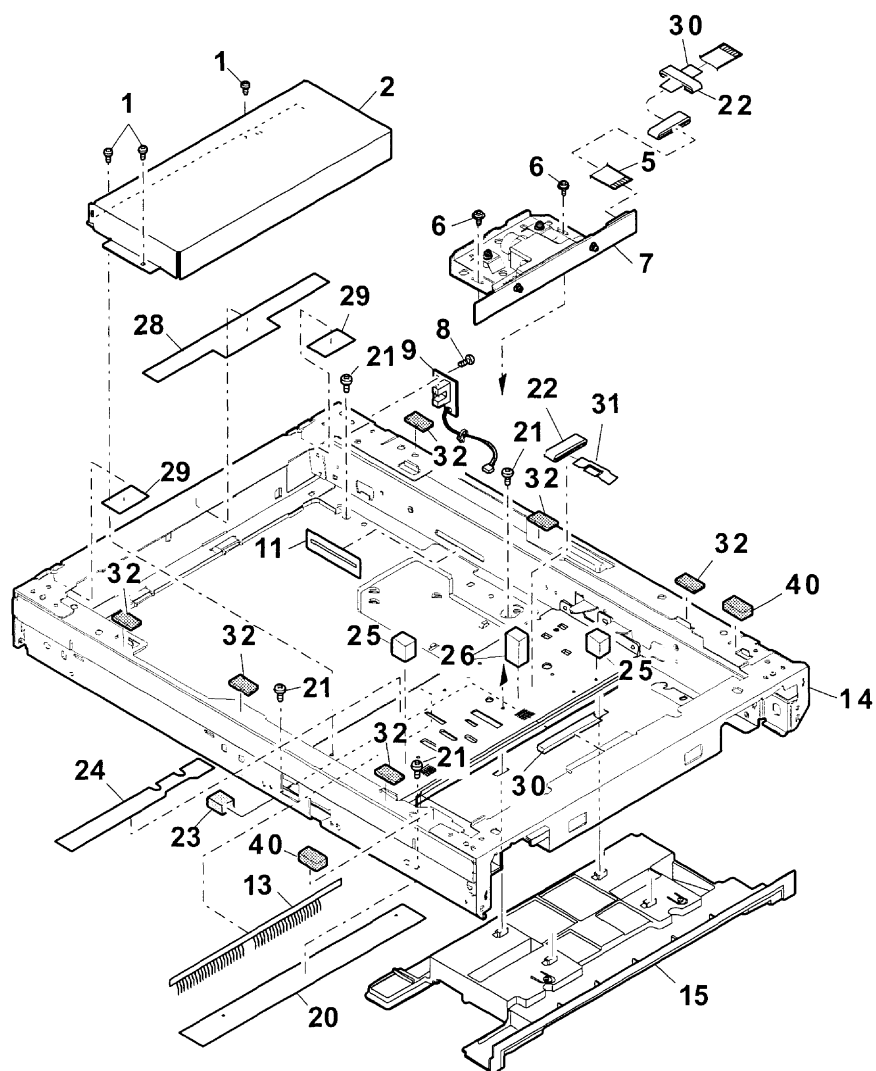
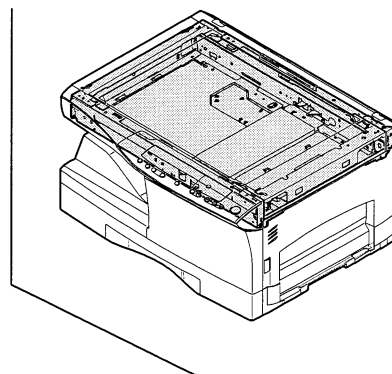
NO.	PARTS CODE	PRICE RANK		NEW MARK	PART RANK	DESCRIPTION
		Ex.	Ja.			
1	PWIR-0003QSZZ	AR	EQ	N	C	MB wire
2	CHLDZ0019QS31	BC	GJ	N	E	2nd,3rd mirror holder unit
4	LPLTM5111FCZZ	AC	DJ		C	Wire fixing plate
5	XBPSD30P05K00	AA	DD		C	Screw (3x5K)
6	DHAI-0041QSZZ	AF	DS	N	C	CL lead harness
7	LX-BZ0005QSZZ	AA	DD	N	C	Screw
8	CPLTM0026QS01	AH	DX	N	C	Pulley fixing plate F
9	NPLYZ0005QSZZ	AG	DX	N	C	Pulley
10	NPLYZ0006QSZZ	AD	DJ	N	C	L pulley
11	XRESP40-05000	AA	DD		C	E type ring
12	CDAIU0002QS01	BG	GT	N	C	Optical base plate
13	XHBSE30P08000	AA	DD		C	Screw (3x8)
14	LRALM0003QSZZ	AG	DS	N	C	MB-B rail R
15	LRALM0002QSZZ	AF	DS	N	C	MB-B rail F
16	LX-BZ0004QSZZ	AB	DD	N	C	Screw
17	XRESP70-08000	AA	DD		C	E type ring
18	NGERH0027QSZZ	AH	DX	N	C	Mirror motor idle gear
19	MSPRC0040QSZZ	AB	DJ	N	C	MB drive spring
20	RMOTP0011QSZZ	BA	FX	N	B	Mirror motor
21	CPLTM0025QS01	AH	DX	N	C	Mirror motor fixing plate
22	XRESP50-06000	AA	DD		C	E type ring
23	NBRGC0387FCZ1	AC	DJ		C	Bearing
24	XPSSJ30-12000	AB	DD		C	Spring pin (φ3 12)
25	NPLYZ0004QSZZ	AG	DX	N	C	Winder drive shaft pulley
26	NBLTT0002QSZZ	AH	DX	N	B	Winder drive belt
27	LX-BZ0324FCZZ	AA	DD		C	Screw (3x4)
28	NPLYZ0003QSZZ	AM	EG	N	C	Winder pulley
29	LX-BZ0049FCZZ	AB	DD		C	Screw (4x6)
30	NSFTZ0008QSZZ	AQ	EQ	N	C	Winder drive shaft
31	NBRGC0133FCZ1	AC	DJ		C	PF bearing 8
32	LX-WZ0119FCZZ	AA	DD	N	C	Washer

NO.	PARTS CODE	PRICE RANK	NEW MARK	PART RANK	DESCRIPTION
3	CREFL0003QS32	BQ		E	Copy lamp unit

5 Optical Frame 1



6 Optical Frame 2



FCP04165

## 6 Optical Frame 2

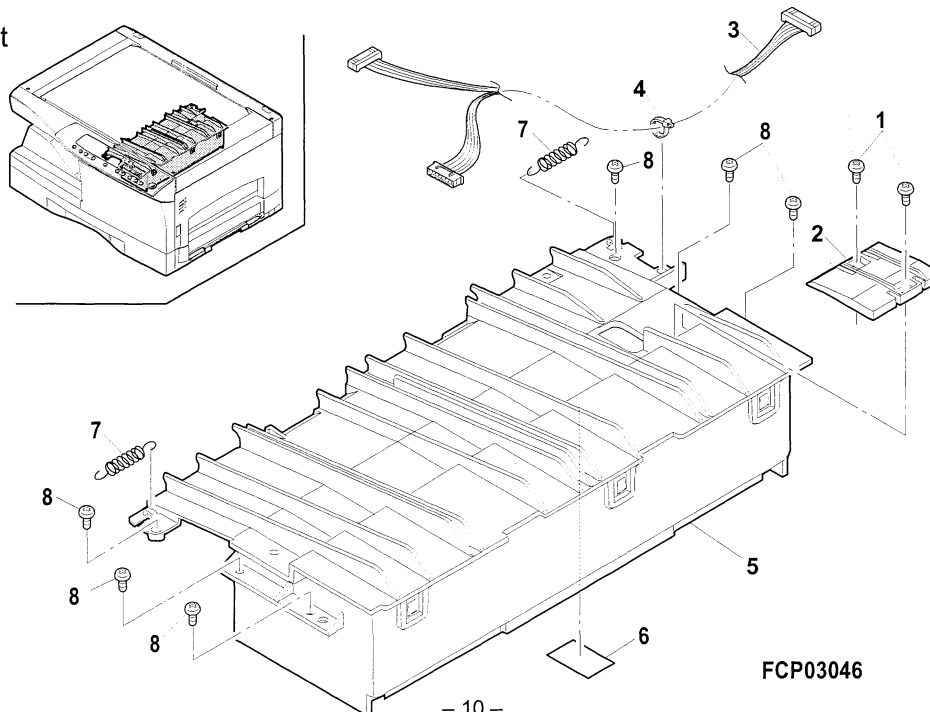
NO.	PARTS CODE	PRICE RANK		NEW MARK	PART RANK	DESCRIPTION
		Ex.	Ja.			
1	XHBSE30P08000	AA	DD		C	Screw (3×8)
2	PCASZ0003QSZZ	AK	EB	N	C	Dark box
3	DHAi-0041QSZZ	AF	DS	N	C	CL lead harness
4	LHLDZ0011QSZZ	AD	DJ	N	C	CL lead holder
5	DHAi-0042QSZZ	AK	EB	N	C	ICU-CCD harness
6	LX-BZ0004QSZZ	AB	DD	N	C	Screw
7	CDAiU0008QS51	BC	GJ	N	E	Lens unit
8	XBBSD30P08000	AA	DD		C	Screw (3×8)
9	CPWBF1177FC5A	AG	DX	N	E	MHPS sensor PWB
10	PCUSG0190FCZ1	AB	DJ		C	Table glass cushion
11	PSHEP0042QSZZ	AC	DJ	N	C	Edge protect sheet
13	PBRSR0002QSZZ	AK	DX	N	B	Discharge brush
14	CDAiU0002QS01	BG	GT	N	C	Optical base plate
15	PGiDM0007QSZZ	AP	EQ	N	C	U-turn rib guide upper
16	TCAUH0933FCZZ	AB	DD		C	HT caution label
17	LPLTM0097QSZZ	AE	DS	N	C	CCD harness cover
18	LPLTM0098QSZZ	AE	DJ	N	C	CCD PWB cover
19	LHLDZ7021XCZZ	AD	DJ		C	Ferrite core holder (FRH-12)
20	PSHEZ0066QSZZ	AE	DS	N	C	Lens base plate lower sheet
21	XEBSE40P12000	AA	DD		C	Screw (4×12)

NO.	PARTS CODE	PRICE RANK		NEW MARK	PART RANK	DESCRIPTION
		Ex.	Ja.			
22	RCORF0002QSZZ	AE			C	Ferrite core
23	PGSK-1004DCZZ	AF			C	Gasket
24	PSHEZ0074QSZZ	AE			C	Optical protection sheet
25	PGSK-0001QSZZ	AG			C	Gasket (Except Saudi Arabia,Brazil,LAG2)
26	PGSK-0006QSZZ	AE			C	Gasket (Except Saudi Arabia,Brazil,LAG2)
28	PSHEZ0081QSZ1	AD			C	Cabinet hook seat A
29	PSHEZ0082QSZZ	AB			C	Cabinet hook seat B
30	PSHEZ0072QSZZ	AE			C	Core holding mylar
31	PSHEZ0141QSZZ	AC			C	Core holding mylar
32	PGUMS0004QSZZ	AA			C	Table glass cushion

## 7 LSU unit

NO.	PARTS CODE	PRICE RANK		NEW MARK	PART RANK	DESCRIPTION
		Ex.	Ja.			
1	XEBSD30P06000	AA	DD		C	Screw (3×6)
2	PCOVP0028QSZZ	AE	DJ	N	C	LSU harness cover
3	DHAi-0059QSZZ	AQ	EQ	N	C	LSU harness
4	LBNDJ0013FCZ1	AA	DJ		C	Wire band
5	DUNTK0013QSZZ	BU	NU	N	E	LSU unit (A4-600D)
6	PSHEZ0073QSZZ	AC	DJ	N	C	LSU harness sheet
7	MSPRT0019QSZZ	AB	DJ	N	C	Delivery paper guide spring
8	XEBSD30P12000	AA	DD		C	Screw (3×12)

## 7 LSU unit

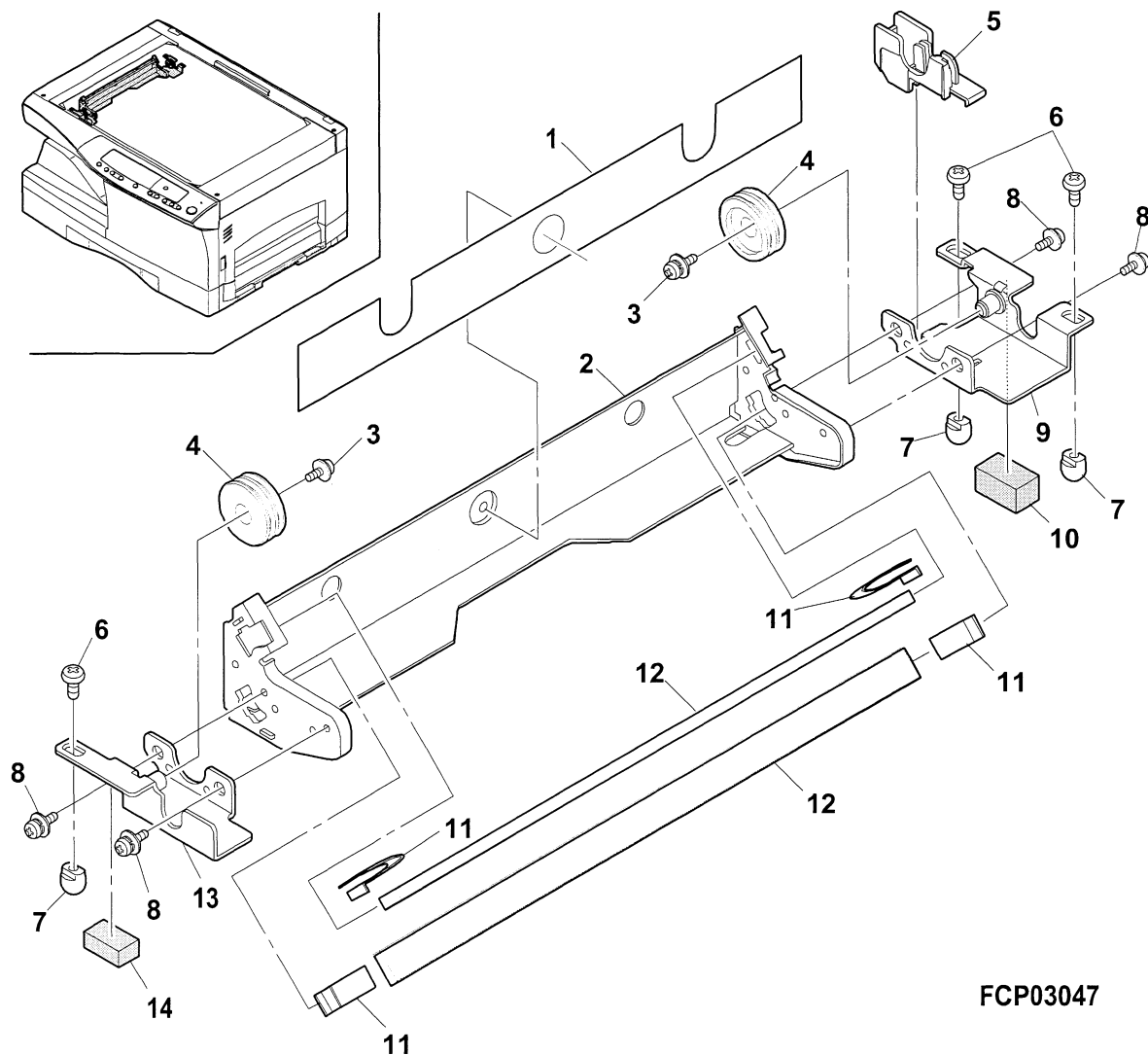


FCP03046

## 8 Mirror Holder unit

NO.	PARTS CODE	PRICE RANK		NEW MARK	PART RANK	DESCRIPTION
		Ex.	Ja.			
1	PSHEZ0048QSZZ	AE	DJ	N	C	Reflector protect sheet
2	LHLDZ0019QSZZ	AN	EG	N	C	2nd,3rd mirror holder
3	XBPSD40P06KS0	AA	DD		C	Screw (4x6KS)
4	NPLYZ0007QSZZ	AG	DX	N	C	W pulley
5	LHLDZ0013QSZZ	AD	DJ	N	C	CL guide holder
6	XEBSD40P06000	AA	DD		C	Screw (4x6)
7	CSLi-0103FC31	AF	DS		E	Slider (4pcs/set)
8	LX-BZ0335FCZZ	AA	DD		C	Screw (4x6)(Red)
9	CPLTM0029QS01	AH	DX	N	C	Pulley fixing plate R
10	PCUSS0009QSZZ	AA	DJ	N	C	MB-B cushion R
11	LFiX-0284FCZZ	AC	DD		C	4th 5th mirror fixing plate F
12	PMiR-0002QSZZ	AN	EQ	N	B	2nd,3rd mirror
13	CPLTM0028QS01	AH	DX	N	C	Pulley fixing plate F
14	PCUSS0201FCZZ	AA	DD		C	MB-B cushion
(Unit)						
901	CHLDZ0019QS31	BC	GJ	N	E	2nd,3rd mirror holder unit

## 8 Mirror Holder unit



FCP03047

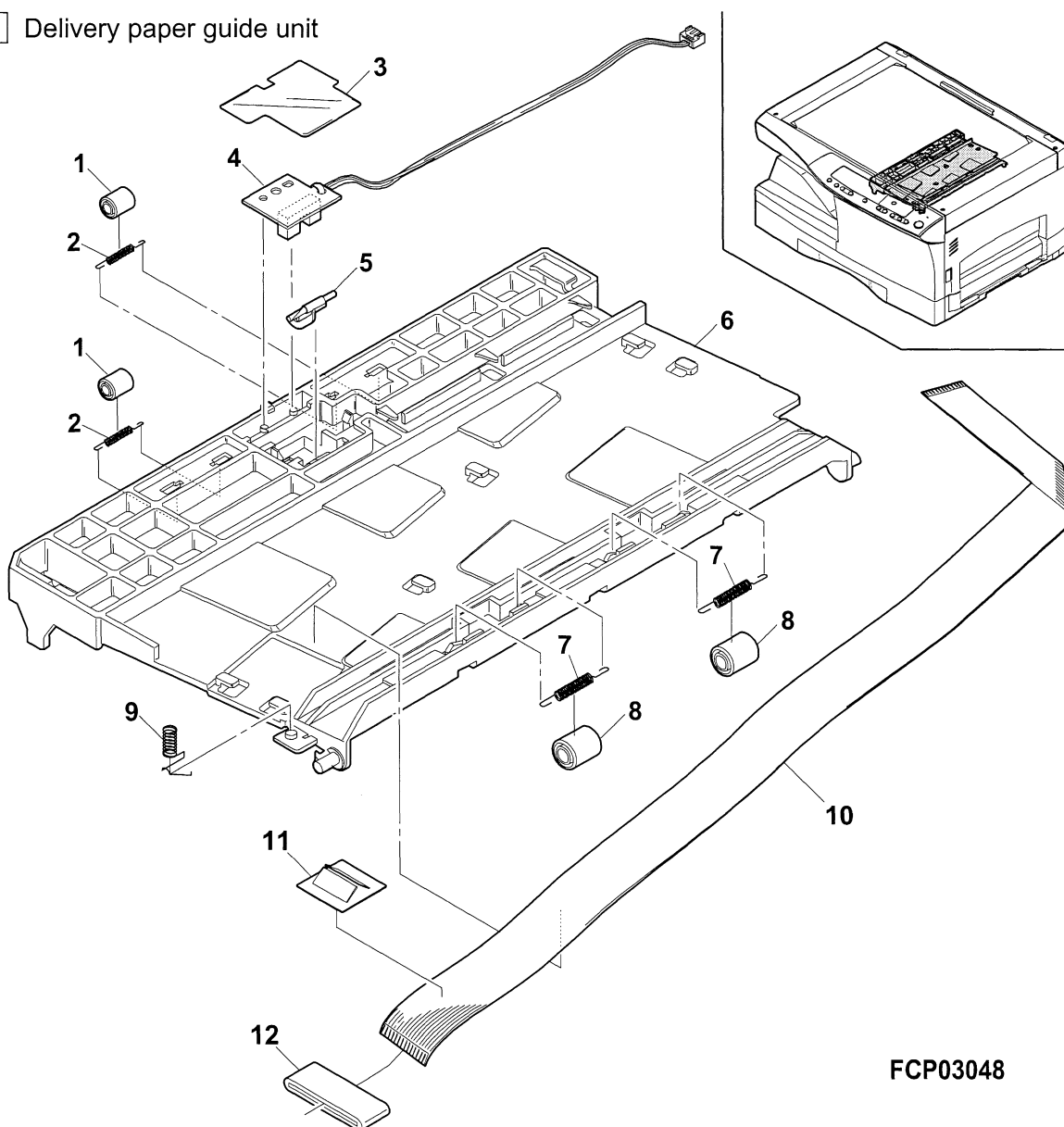


## 9 Delivery paper guide unit

NO.	PARTS CODE	PRICE RANK		NEW MARK	PART RANK	DESCRIPTION
		Ex.	Ja.			
2	MSPRT0020QSZZ	AB	DJ	N	C	Delivery roller spring
3	PSHEZ0017QSZZ	AC	DJ	N	C	PWB insulation sheet
4	CPWBF1177FC57	AG	DX	N	E	POD sensor PWB
5	MLEVP0005QSZZ	AD	DJ	N	C	Delivery actuator
6	PGIDM0006QSZZ	AN	EG	N	C	Delivery paper guide
7	MSPRC0021QSZZ	AB	DJ	N	C	Delivery transport roller spring
8	NRÖLP1122FCZZ	AF	DS		C	PS upper roller
9	MSPRC0022QSZZ	AC	DJ	N	C	Delivery earth spring
10	DHAi-0040QSZZ	AK	DX	N	C	OP harness
11	PSHEZ0080QSZZ	AE	DJ	N	C	OPE harness core hold sheet
12	RCÖRF0002QSZZ	AE	DS	N	C	Ferrite core

NO.	PARTS CODE	PRICE RANK	NEW MARK	PART RANK	DESCRIPTION
1	NRÖLP0008QSZZ	AD		C	Delivery roller upper (Inch series)
	NRÖLP0046QSZZ	AC		C	Delivery roller upper (AB series)

## 9 Delivery paper guide unit



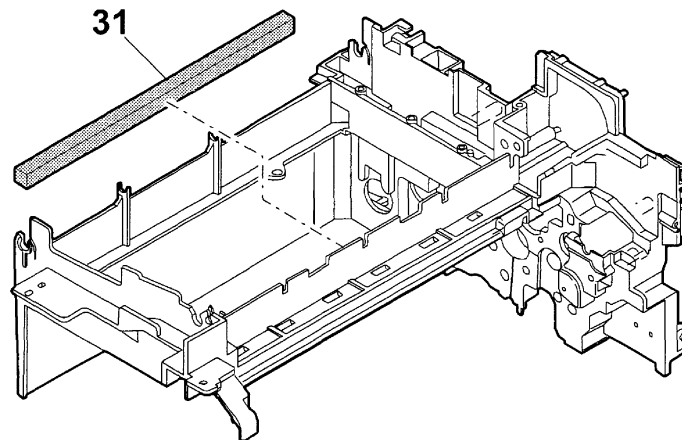
FCP03048

## 10 Middle Frame

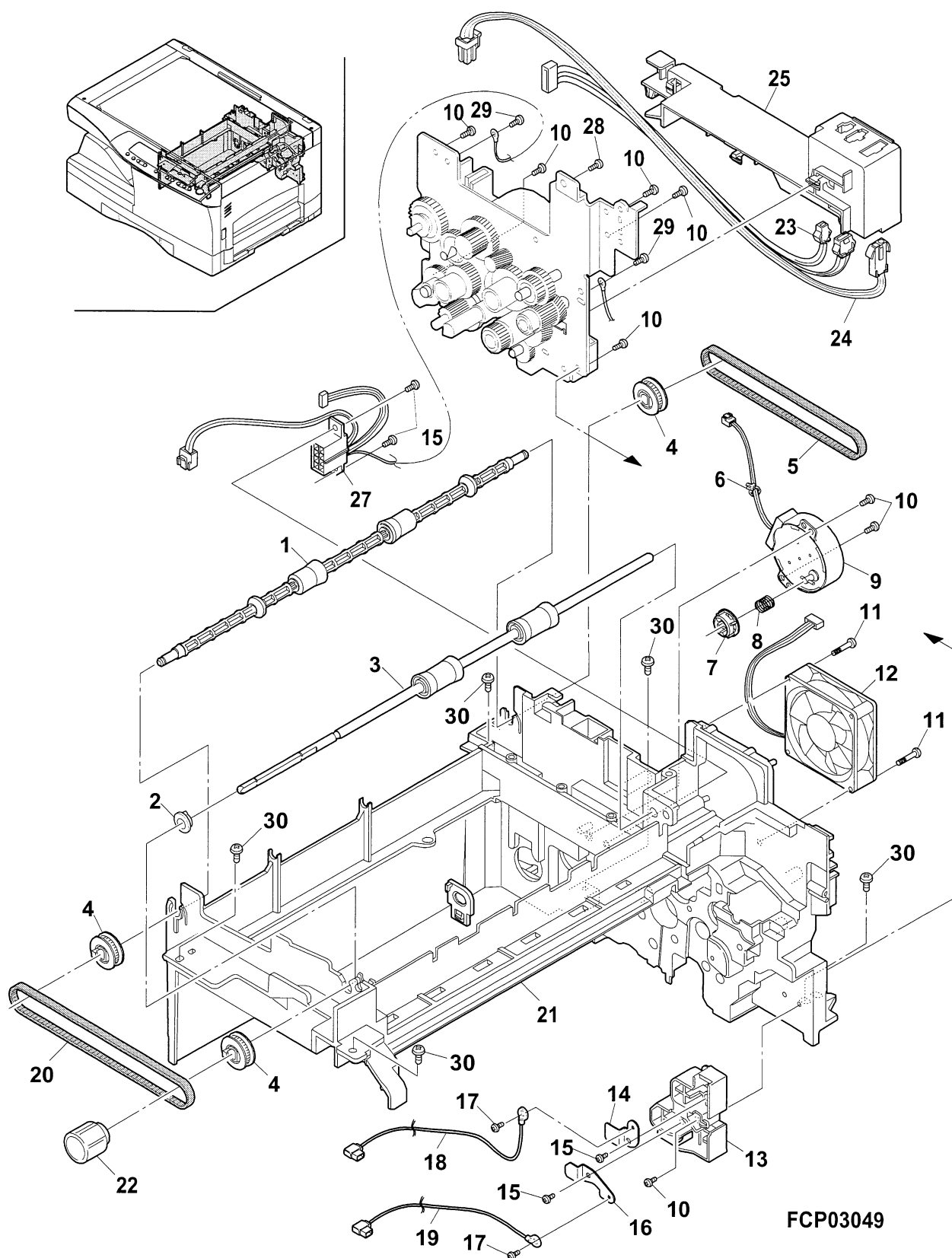
NO.	PARTS CODE	PRICE RANK		NEW MARK	PART RANK	DESCRIPTION
		Ex.	Ja.			
1	NRÖLP0007QSZ1	AQ	EQ	N	C	Delivery roller lower
2	NBRGC0579FCZZ	AE	DJ		C	Roller bearing
3	NRÖLP0012QSZ1	AS	EQ	N	C	Delivery trasport roller lower
4	NPLYZ0001QSZZ	AE	DJ	N	C	Pulley (22T)
5	NBLT-0005QSZZ	AH	DX	N	B	Delivery roller drive belt
6	LBNDJ0043FCZZ	AA	DD		C	Snap band (SG-130)
8	MSPRC0024QSZZ	AA	DJ	N	C	Hopper spring
9	RMÖTD0009QSZZ	AU	EZ	N	B	Toner motor
10	XEBSD30P10000	AA	DD		C	Screw (3x10)
11	XEBSD30P30000	AA	DD		C	Screw (3x30)
13	LHLDZ0018QSZZ	AE	DS	N	C	TC high voltage holder
14	QSLP-0006QSZZ	AE	DJ	N	C	BC HV electrode plate
15	XEBSD30P06000	AA	DD		C	Screw (3x6)
16	QSLP-0005QSZZ	AE	DJ	N	C	TC HV electrode plate
17	XBPSC30P06K00	AA	DD		C	Screw (3x6K)
18	DHAi-0046QSZZ	AH	DX	N	C	BC harness
19	DHAi-0048QSZZ	AG	DX	N	C	TC harness
20	NBLTT0001QSZZ	AH	DX	N	B	Belt 308
22	JKNBZ0001QSZZ	AE	DS	N	C	Roller rotation knob
23	DHAi-0037QSZ1	AS	EQ	N	C	PPD2 interface harness
24	DHAi-0029QSZZ	AN	EG	N	C	HL harness 1 (100V series)
	DHAi-0057QSZZ	AN	EG	N	C	HL harness 1 (200V series)
25	PGiDM0009QSZZ	AG	DS	N	C	Harness guide
27	DHAi-0038QSZZ	AS	EQ	N	C	DVS harness
28	LX-BZ3006SC0S	AA	DD		C	Screw (3x6)
29	XBBSD30P08000	AA	DD		C	Screw (3x8)
30	XEBSD40P12000	AA	DD		C	Screw (4x12)

NO.	PARTS CODE	PRICE RANK	NEW MARK	PART RANK	DESCRIPTION
7	NCPL-0006QSZZ	AC		C	Hopper cupling
12	NFANP0001QSZ1	AX		B	Fan
21	LFRM-0035QSZZ	AZ	N	C	Middle frame
31	PMLT-0026QSZZ	AC		C	Cushion

## 10 Middle frame



# 10 Middle Frame

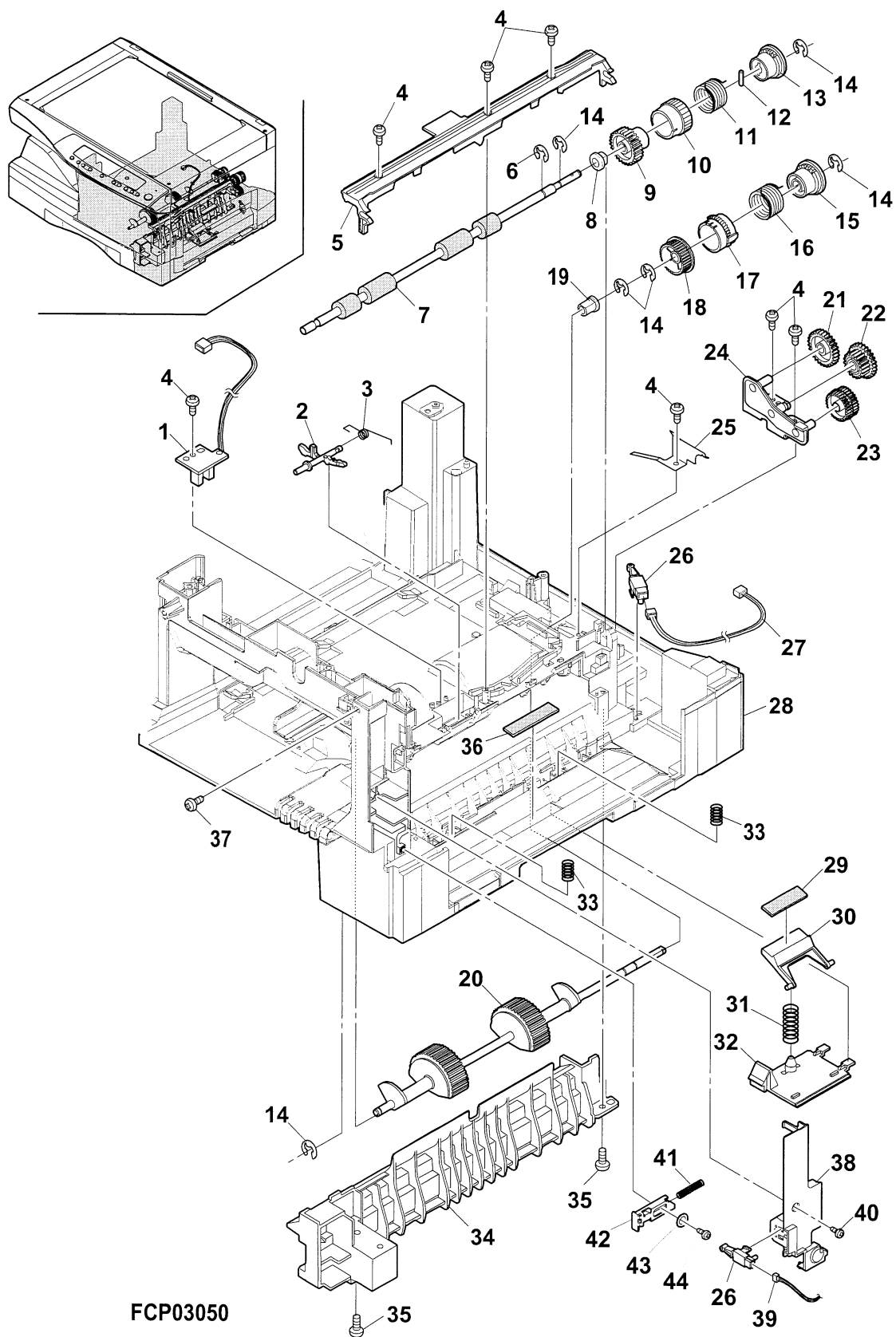


# 11 Base plate unit 1

NO.	PARTS CODE	PRICE RANK		NEW MARK	PART RANK	DESCRIPTION
		Ex.	Ja.			
1	CPWBF1177FC58	AG	DX	N	E	PPD1sensor PWB
2	MLEVP0006QSZZ	AD	DJ	N	C	PS frnt actuator
3	MSPRC0026QSZZ	AB	DJ	N	C	PS front actuator spring
4	XEBSE30P10000	AA	DD		C	Screw (3x10)
5	PGiDM0010QSZ1	AG	DX	N	C	TC front guide upper
6	XRESP50-06000	AA	DD		C	E type ring
7	NRÖLR0013QSZZ	AQ	EQ	N	C	PS lower roller
8	NBRGC0100FCZ1	AC	DJ		C	Bearing 6
9	NGERH0020QSZZ	AG	DX	N	C	Cluth gear (26T)
10	PPiPP0109FCZZ	AB	DD		C	Pipe A
11	MSPRC1316FCZ1	AE	DS		C	MF clutch spring B
12	XPSSJ20-07000	AA	DD		C	Spring pin (φ2-7)
13	LBÖSZ1851FCZZ	AC	DJ		C	Clutch boss
14	XRESP40-06000	AA	DD		C	E type ring
15	LBÖSZ1031FCZZ	AC	DJ		C	Clutch boss
17	PPiPP0003QSZZ	AD	DJ	N	C	Clutch sleeve
18	NGERH1132FCZZ	AH	DX		C	Clutch gear (29T)
19	NBRGP0562FCZZ	AD	DJ		C	Bearing 5
20	CRÖLP0015QS01	AU	EZ	N	C	paper feeding roller
21	NGERH0022QSZZ	AC	DJ	N	C	Gear (33T)
22	NGERH0026QSZZ	AD	DJ	N	C	Gear (21/29T)
23	NGERH0025QSZZ	AD	DJ	N	C	W gear (30T)
24	CPLTM0024QS01	AG	DX	N	C	PF plate 2
25	LPLTM0046QSZZ	AE	DJ	N	C	PS earth plate
26	QSW-B0003QSZZ	AF	DS	N	B	Tray detect switch
27	DHAi-0050QSZZ	AR	EQ	N	C	CED1 harness
28	GDAi-0001QSZZ	BF	GN	N	D	Base plate
34	LRALP0001QSZZ	AM	EG	N	C	Base plate rail R
35	XEBSE40P12000	AA	DD		C	Screw (4x12)
37	XBPSD30P08KS0	AA	DD		C	Screw (3x8KS)
38	PCÖVP0007QSZZ	AF	DS	N	C	Sensor cover
39	DHAi-0049QSZZ	AG	DS	N	C	D-RST harness
40	XEBSE30P12000	AA	DD		C	Screw (3x12)
41	MSPRC0077QSZZ	AB	DJ	N	C	Front exterior lever spring
42	LPLTM0016QSZZ	AE	DS	N	C	Front exterior lever plate
43	LX-WZ0023FCZZ	AA	DD		C	Washer
44	XEBSE30P10000	AA	DD		C	Screw (3x10)

NO.	PARTS CODE	PRICE RANK	NEW MARK	PART RANK	DESCRIPTION
16	MSPRC0161QSZZ	AF	N	C	Clutch spring
29	PSHEZ2026FCZ1	AB		C	Sheet M1 (Pakistan,LAG2.L2,L4)
30	LHLDZ0017QSZZ	AD		C	Pressure plate holder (Pakistan,LAG2.L2,L4)
31	MSPRC0047QSZZ	AA		C	Pressure plate spring (Pakistan,LAG2.L2,L4)
32	PCÖVP0013QSZZ	AD		C	Multi cover (Pakistan,LAG2.L2,L4)
33	MSPRC0037QSZZ	AB		C	Transport lower roller spring (Pakistan,LAG2.L2,L4)
36	PSHEZ2174FCZZ	AB		C	Paper feeding sheet (Pakistan,LAG2.L2,L4)

# 11 Base plate unit 1



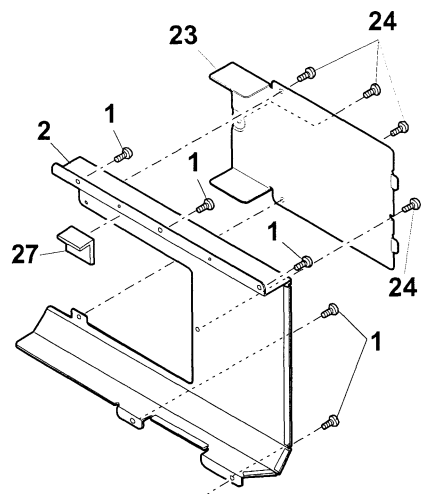
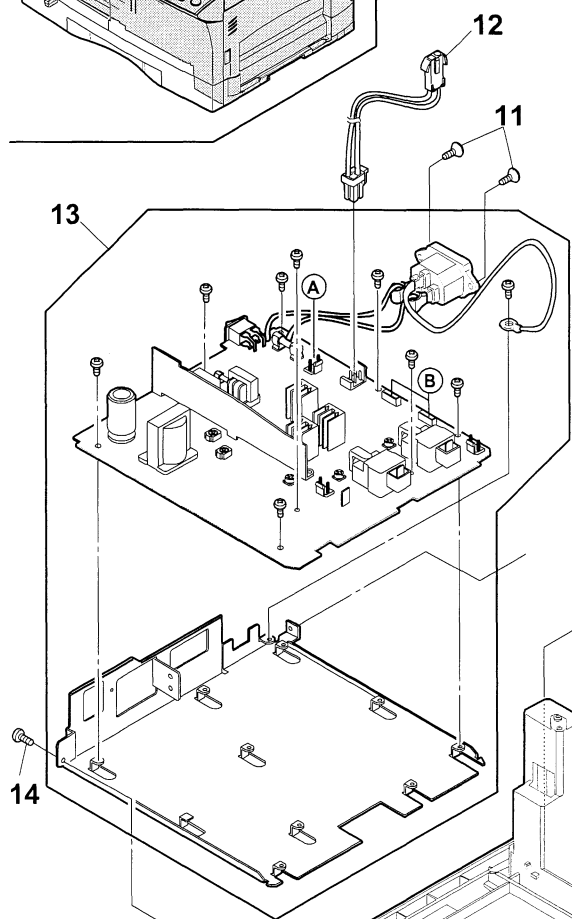
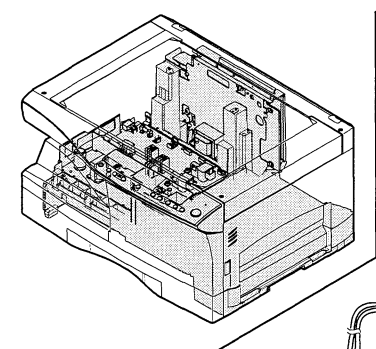
FCP03050

## 12 Base plate unit 2

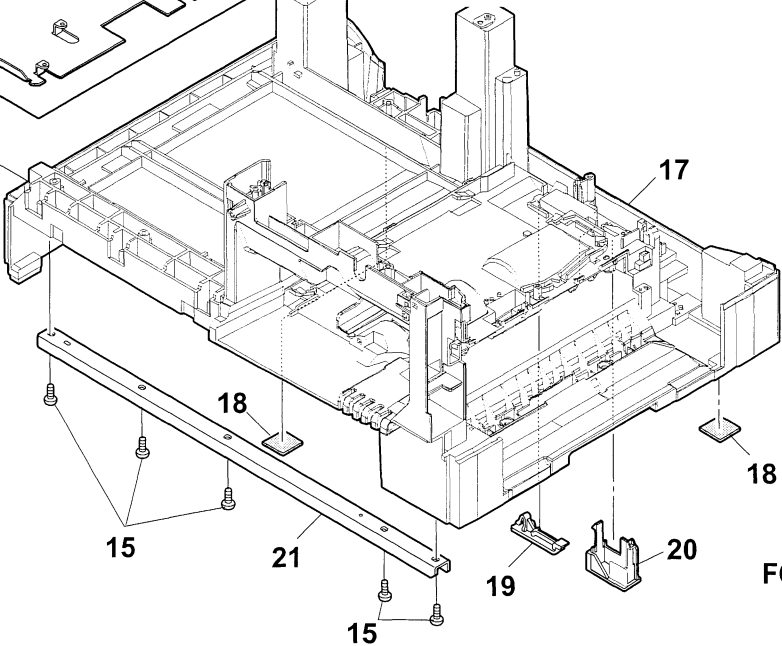
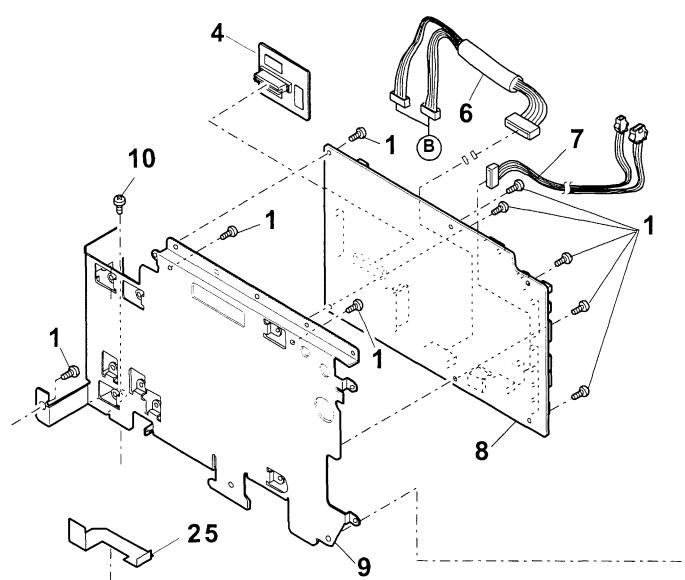
NO.	PARTS CODE	PRICE RANK		NEW MARK	PART RANK	DESCRIPTION
		Ex.	Ja.			
1	XHBSE30P06000	AA	DD		C	Screw (3x6)
2	LPLTM0088QSZZ	AN	EQ	N	C	PWB cover
7	DHAi-0037QSZ1	AS	EQ	N	C	PPD2 interface harness
10	XEBSD30P10000	AA	DD		C	Screw (3x10)
11	XESSD30P10000	AA	DD	N	C	Screw (3x10)
12	DHAi-0029QSZZ	AN	EG	N	C	HL harness 1 (100V series)
12	DHAi-0057QSZZ	AN	EG	N	C	HL harness 1 (200V series)
14	XEBSE30P10000	AA	DD		C	Screw (3x10)
15	XEBSE40P12000	AA	DD		C	Screw (4x12)
17	GDAi-0001QSZZ	BF	GN	N	D	Base plate
18	GLEGG0064FCZZ	AC	DJ		C	Rubber foot
19	PCÖVP0009QSZZ	AE	DS	N	C	2nd connector cover (Except Europe)
	PCÖVP0009QSZA	AF	DS	N	C	2nd connector cover (For Europe)
	PCÖVP0008QSZZ	AE	DJ	N	C	2nd gear cover (Except Europe)
20	PCÖVP0008QSZA	AE	DS	N	C	2nd gear cover (For Europe)
	LPLTM0020QSZZ	AL	EB	N	C	Base plate reinforce plate F
21	LPLTM0020QSZZ	AL	EB	N	C	Base plate reinforce plate F
23	LPLTM0089QSZZ	AH	DX	N	C	PWB cover
24	XBBSE30P08000	AA	DD		C	Screw (3x8)
21	LPLTM0020QSZZ	AL	EB	N	C	Base plate reinforce plate F
23	LPLTM0089QSZZ	AH	DX	N	C	PWB cover
24	XBBSE30P08000	AA	DD		C	Screw (3x8)
23	LPLTM0089QSZZ	AH	DX	N	C	PWB cover
24	XBBSE30P08000	AA	DD		C	Screw (3x8)
21	LPLTM0020QSZZ	AL	EB	N	C	Base plate reinforce plate F
23	LPLTM0089QSZZ	AH	DX	N	C	PWB cover
24	XBBSE30P08000	AA	DD		C	Screw (3x8)

NO.	PARTS CODE	PRICE RANK	NEW MARK	PART RANK	DESCRIPTION
4	CPWBF0013QS52	BL		E	GDI memory PWB 6MB (AR-150E)
6	DHAi-0039QSZZ	BD		C	Center frame harness (100V series)
	DHAi-0064QSZZ	AV		C	Center frame harness (200V series)
8	CPWBX0062TS5F	AC	N	E	MCU PWB (AR-150E L2,L4)
	CPWBX0062QS5C	AC	N	E	MCU PWB (AR-120E)
	CPWBX0062QS5D	AC	N	E	MCU PWB (AR-150E)
9	LPLTM0017QSZ3	AQ		C	PWB holder
13	CPWBF0017QS32	BU		E	DC power supply PWB (120V/127V)(SaudiArabia,Brazil,LAG2)
	CPWBF0017QS37	BU		E	DC power supply PWB (200V series)(Other countries)
25	PSHEZ0195QSZZ	AD		C	Sheet (200V series)
27	PMLT-0028QSZZ	AC		C	Core fixing cushion

12 Base plate unit 2



FCP04166



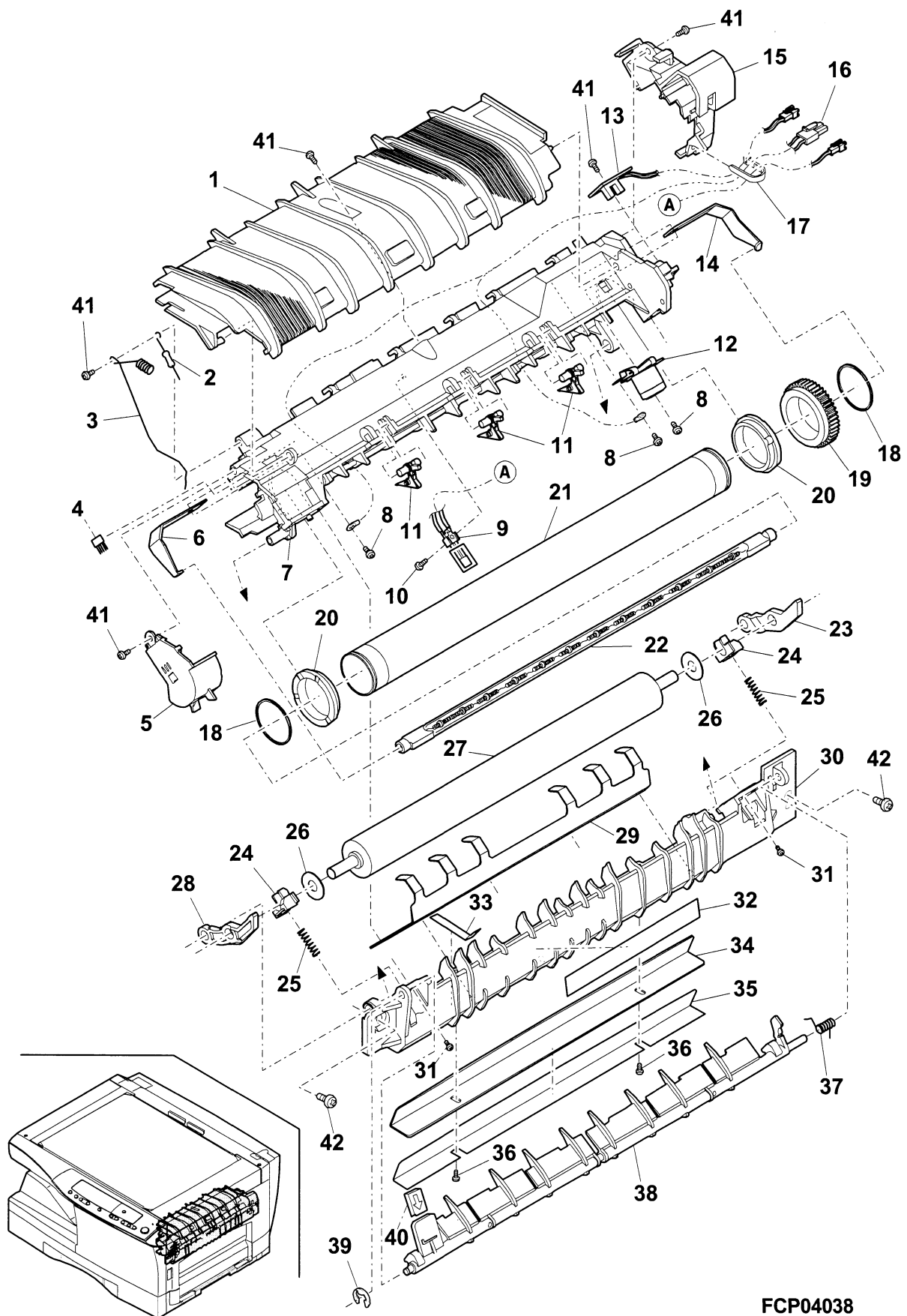
FCP03051

### 13 Fusing unit

NO.	PARTS CODE	PRICE RANK	NEW MARK	PART RANK	DESCRIPTION
1	P G i D M 0 0 2 3 Q S Z Z	AP		C	U-turn guide lower
2	V R H - S T 2 H B 1 5 7 K	AD		C	Resistor (1/2W 150MΩ)
3	P W i R - 0 0 0 1 Q S Z Z	AF		C	HR earth wire
4	P B R S R 0 0 0 4 Q S Z Z	AE		C	Discharge brush FU
5	P C Ö V P 0 0 1 0 Q S Z Z	AG		D	Fusing cover F
6	M S P R P 0 0 3 3 Q S Z Z	AD		C	Copy lamp spring F
7	L F R M - 0 0 0 4 Q S Z Z	AV		D	Fusing upper frame
8	L X - B Z 0 0 1 0 Q S Z Z	AB		C	Screw (3×6)
9	R D T C T 0 1 2 8 F C Z Z	AR		C	Thermistor
10	X B P S D 3 0 P 1 0 K S 0	AB		C	Screw (3×10KS)
11	C T M E - 0 2 2 9 F C 0 3	AG		C	Separator pawl
12	C T H M - 0 0 1 9 F C 5 2	AU		E	FU thermostat unit
13	C P W B F 1 1 7 7 F C 5 9	AG		E	PPD2 sensor PWB
14	M S P R P 0 0 3 4 Q S Z Z	AE		C	Copy lamp spring R
15	P C Ö V P 0 0 1 1 Q S Z Z	AK		D	Fusing cover R
16	D H A i - 0 0 3 0 Q S Z 1	AN	N	C	HL harness 2 (100V series)
17	D H A i - 0 0 5 8 Q S Z 1	AL	N	C	HL harness 2 (200V series)
18	L B N D J 0 0 6 7 F C Z Z	AC		C	Wire band
19	L S T P P 0 1 1 6 F C Z Z	AA		C	Roller stopper
20	N G E R H 0 5 4 0 F C Z 1	AE		C	Fushing gear (45T)
21	N B R G P 0 5 6 7 F C Z Z	AG		C	Fusing bearing
22	N R Ö L i 0 0 1 4 Q S Z 2	AZ	N	C	Heart roller
23	R L M P U 0 0 1 1 Q S Z Z	BA		B	Heater lamp (200V series)
24	R L M P U 0 0 1 0 Q S Z Z	BA		B	Heater lamp (100V series)
25	M L E V P 0 0 1 5 Q S Z Z	AF		C	Pressure lever R
26	N B R G P 0 2 6 0 F C Z 1	AD		C	Pressure bearing N
27	M S P R C 0 0 5 5 Q S Z Z	AC		C	Pressure spring
28	L X - W Z 0 3 1 3 F C Z Z	AA		C	Washer
29	N R Ö L R 0 0 2 8 Q S Z Z	AZ		C	Pressure roller
30	M L E V P 0 0 1 4 Q S Z Z	AF		C	Pressure lever F
31	L P L T M 0 0 2 2 Q S Z Z	AF		C	Scraper
32	L F R M - 0 0 0 5 Q S Z Z	AQ		D	Fusing lower frame
33	X E B S E 3 0 P 1 2 0 0 0	AA		C	Screw (3×12)
34	T C A U H 0 9 9 1 F C Z Z	AE		C	High temperature caution label (Australia, New Zealand)
35	T C A U H 0 9 9 2 F C Z 1	AF		C	High temperature caution label (other countries)
36	P S H E Z 0 0 4 5 Q S Z 1	AC		C	PG earth sheet
37	P G i D H 0 0 2 6 Q S Z Z	AE		C	Fusing front paper guide
38	P S H E P 0 0 2 3 Q S Z Z	AF		C	Fusing front PG sheet
39	L X - B Z 0 7 3 5 F C Z Z	AA		C	Screw
40	M S P R T 0 0 5 4 Q S Z Z	AC		C	Gate spring
41	L P L T P 0 0 0 9 Q S Z Z	AS		C	Turn over gate
42	X R E S P 3 0 - 0 4 0 0 0	AA		C	E type ring
43	P S H E P 0 0 4 7 Q S Z Z	AC		C	Handle label
44	X E B S E 3 0 P 0 8 0 0 0	AA		C	Screw (3×8)
45	L X - B Z 0 0 1 1 Q S Z Z	AB		C	Screw
	(Unit)				
901	D U N T W 0 0 1 4 Q S 2 2	BT	N	E	Fusing unit (100V series)
	D U N T W 0 0 1 4 Q S 2 3	BT	N	E	Fusing unit (200V series)(Australia, New Zealand)
	D U N T W 0 0 1 4 Q S 2 4	BT	N	E	Fusing unit (200V series)(other countries)



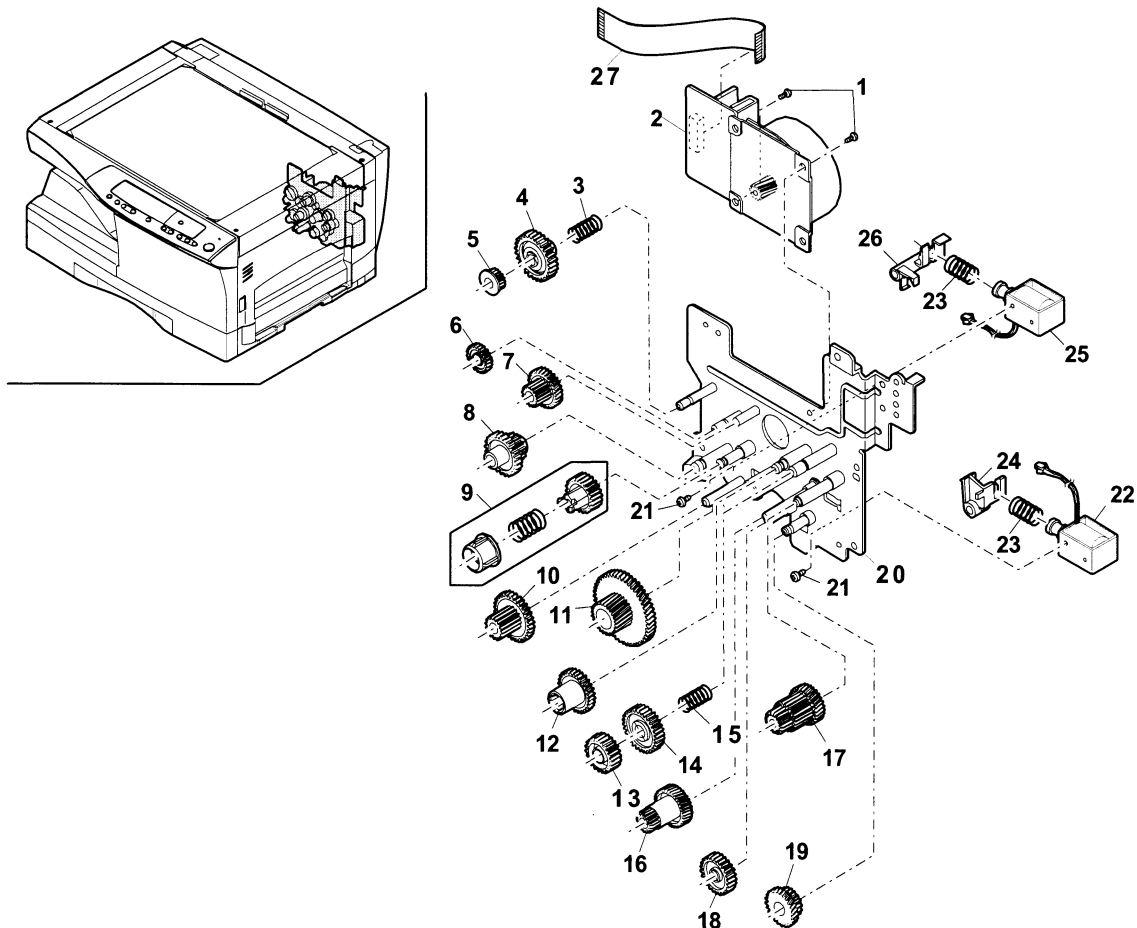
# 13 Fusing unit



## 14 Drive unit

NO.	PARTS CODE	PRICE RANK	NEW MARK	PART RANK	DESCRIPTION
1	XBBSD40P06000	AA		C	Screw (4×6)
2	RMOTP0010QSZZ	BN		B	Main motor
3	MSPRC0053QSZZ	AB		C	Pulley spring (AR-150/AR-F151)
4	NGERH0050QSZZ	AD		C	Ratchet gear (33T)(AR-150/AR-F151)
5	NPLYZ0002QSZZ	AC		C	Pulley (17T)(AR-150/AR-F151)
6	NGERH0010QSZZ	AD		C	Gear (28T)
7	NGERH0009QSZZ	AD		C	Gear (46/16T)
8	NGERH0014QSZZ	AD		C	Gear (30/15T)
9	CGERH0011QS51	AE		E	MG gear unit
10	NGERH0015QSZZ	AD		C	Gear (37/15T)
11	NGERH0007QSZZ	AH		C	Gear (68/26T)
12	NGERH0016QSZZ	AD		C	Cupring gear (34T)
13	NGERH0019QSZZ	AD		C	Ratchet gear (21T)
14	NGERH0018QSZZ	AC		C	Ratchet gear (28T)
15	MSPRC0023QSZZ	AB		C	Ratchet spring
16	NGERH0008QSZ1	AL		C	Gear (55/19T)
17	NGERH0017QSZZ	AD		C	Gear (33/20/15T)
18	NGERH0012QSZZ	AE		C	Gear (20T)
19	NGERH0013QSZZ	AG		C	Gear (31/17T)
20	CPLTM0042QS02	AY		C	Main drive plate
21	XBBSD30P04000	AA		C	Screw (3×4)
22	RPLU-0016QSZZ	AN		B	Solenoid
23	MSPRC1318FCZ1	AA		C	Spring B
24	PTME-0002QSZZ	AD		C	PS roller pawl
25	RPLU-0002QSZZ	AN		B	Solenoid
26	PTME-0003QSZ1	AD		C	Roller pawl
27	DHAI-0045QSZZ	AD		C	Main motor harness
(Unit)					
901	CPLTM0042QS54	BV		E	Drive unit (AR-150/AR-F151)
	CPLTM0042QS53	BV		E	Drive unit (AR-155)

## 14 Drive unit



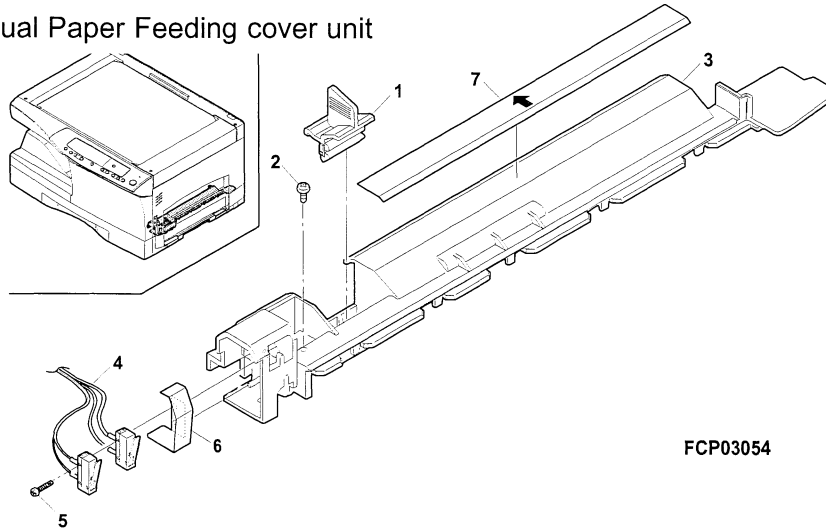
FCP04039

### 15 Single Manual Paper Feeding cover unit

NO.	PARTS CODE	PRICE RANK		NEW MARK	PART RANK	DESCRIPTION
		Ex.	Ja.			
1	CCLEZ0005QS51	AQ	EQ	N	E	Charger cleaner unit
2	XEBSE30P08000	AA	DD	N	C	Screw (3×8)
4	CSW-M0004QS51	AS	EQ	N	E	Side door detect switch unit
5	XEPSP20P18000	AB	DD	N	C	Screw (2×18)
7	TCAUH0007QSZZ	AD	DJ	N	C	Laser caution label (For Europe,Australia)

NO.	PARTS CODE	PRICE RANK	NEW MARK	PART RANK	DESCRIPTION
3	PCÖVP0012QSZ1	AK		C	Single upper cover
6	MSPRP0110QSZ1	AD		C	Door switch spring

### 15 Single Manual Paper Feeding cover unit

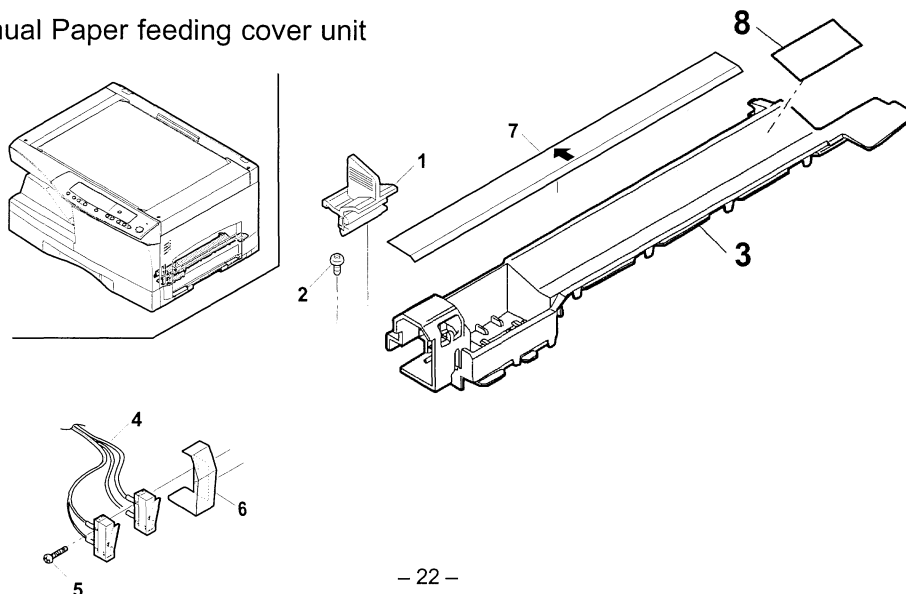


### 16 Multi Manual Paper feeding cover unit

NO.	PARTS CODE	PRICE RANK		NEW MARK	PART RANK	DESCRIPTION
		Ex.	Ja.			
1	CCLEZ0005QS51	AQ	EQ	N	E	Charger cleaner unit
2	XEBSE30P08000	AA	DD	N	C	Screw (3×8)
4	CSW-M0004QS51	AS	EQ	N	E	Side door detect switch unit
5	XBPSD20P18000	AA	DD	N	C	Screw (2×18)
7	TCAUH0007QSZZ	AD	DJ	N	C	Laser caution label (For Europe,Australia)

NO.	PARTS CODE	PRICE RANK	NEW MARK	PART RANK	DESCRIPTION
3	PCÖVP0023QSZ1	AK		C	Multi upper cover
6	MSPRP0110QSZ1	AD		C	Door switch spring
8	PSHEZ0075QSZZ	AC		C	MB upper guide sheet

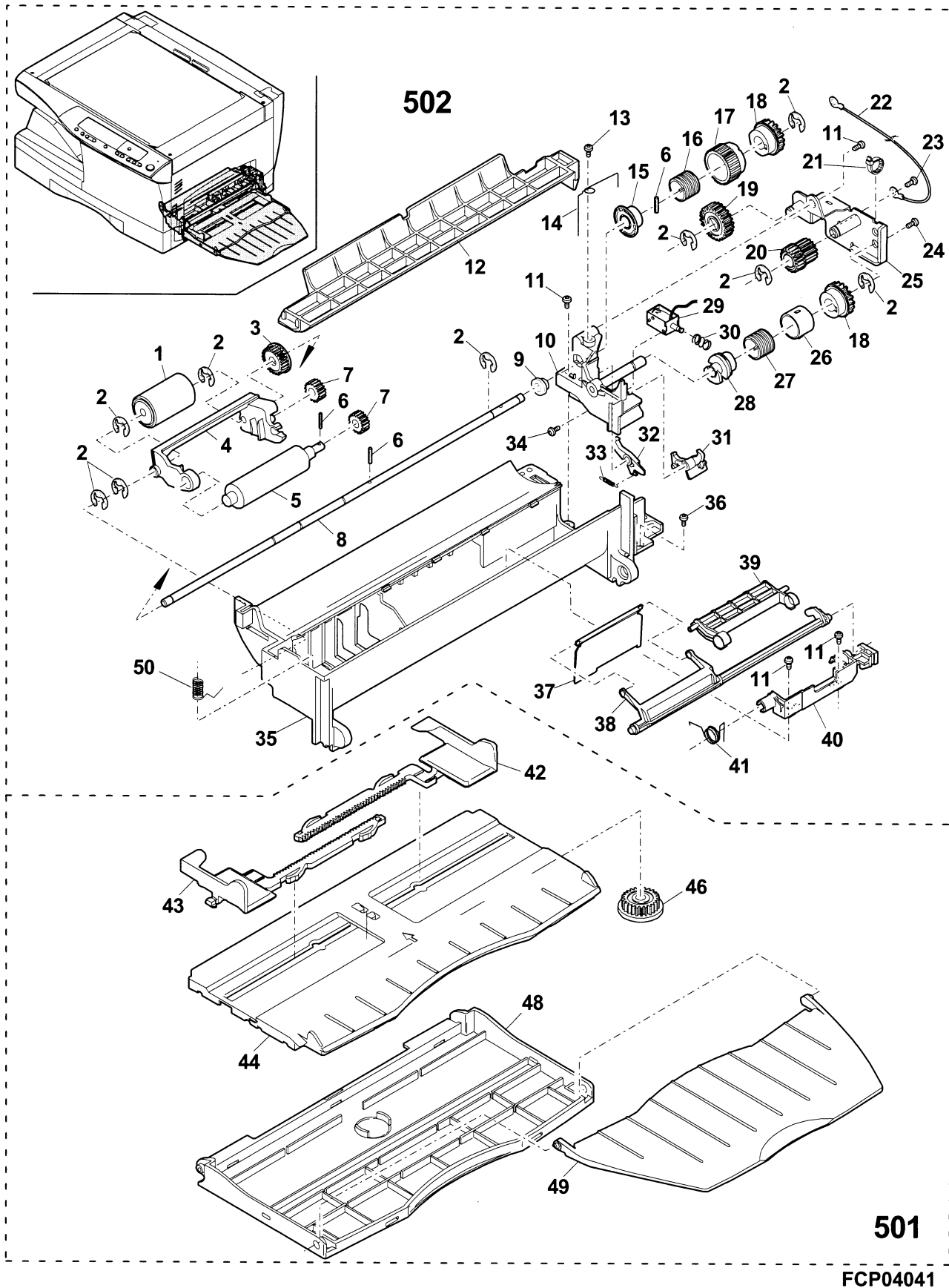
### 16 Multi Manual Paper feeding cover unit



18 Multi manual paper feeding unit

NO.	PARTS CODE	PRICE RANK	NEW MARK	PART RANK	DESCRIPTION
1	NRÖLR0922FCZZ	AR		C	Manual paper feed roller
2	XRESP40-06000	AA		C	E type ring
3	NGERH0992FCZZ	AB		C	Gear (20T)
4	MARMP0173FCZZ	AC		C	Arm C
5	NRÖLP1008FCZZ	AK		C	Roller R
6	XPSSJ20-07000	AA		C	Spring pin (φ2-7)
7	NGERH0990FCZZ	AB		C	Gear (16T)
8	NSFTZ2311FCZZ	AU		C	Cam boss A shaft
9	LBSHZ0303FCZZ	AC		C	M bushing C
10	LBRC-0055FCZZ	AK		C	Multi F bracket
11	XEBSE30P08000	AA		C	Screw (3x8)
12	PGIDM0014QSZZ	AF		C	DUP upper guide
13	XEBSD30P06000	AA		C	Screw (M3x6)
14	MSPRC0049QSZZ	AC		C	Manual feeding earth spring
15	LBÖSZ1508FCZZ	AG		C	Cam boss A2
16	MSPRC1315FCZ1	AD		C	Clutch spring A
17	PPIPP0109FCZZ	AB		C	Pipe A
18	LBÖSZ1510FCZZ	AF		C	Cam boss A1
19	NGERH0972FCZZ	AB		C	Gear (27T)
20	NGERH0991FCZZ	AC		C	Gear (20.20MXL)
21	LBNDJ0013FCZZ	AA		C	Wire band
22	DHAI-0066QSZZ	AD		C	Manual feeding earth harness
23	XHBSE30P06000	AA		C	SCrew (3x6)
24	XBPSD30P06KS0	AA		C	Screw (3x6K)
25	CPLTM0023QS03	AG		B	Paper plate 1
26	PPIPP0175FCZZ	AC		C	Pipe B
27	MSPRC1316FCZ1	AE		C	MF clutch spring B
28	LBÖSZ1509FCZ1	AD		C	Cam boss B
29	RPLU-0003QSZZ	AN		B	Multi feeding solenoid
30	MSPRC1318FCZ1	AA		C	Spring B
31	PTME-0179FCZZ	AC		C	Manual paper feeding pawl B
32	PTME-0178FCZZ	AC		C	Manual paper feeding pawl A
33	MSPRC2175FCZZ	AA		C	Pawl A spring
34	XBBSD30P08000	AA		C	Screw (3x8)
35	LFRM-0010QSZZ	AN		D	Multi frame
36	XEBSE40P12000	AA		C	Screw (4x12)
37	LSTPP0300FCZZ	AB		C	Stopper plate
38	MARMP0205FCZZ	AF		C	Arm B
39	MARMP0204FCZ1	AF		C	Arm A
40	MHNG-0002QSZZ	AC		C	Arm hinge
41	MSPRC0048QSZZ	AB		C	Arm C spring
42	PGIDM0018QSZZ	AE		C	MB side guide R
43	PGIDM0017QSZZ	AE		C	MB side guide L
44	PCÖVP0019QSZZ	AK		D	Multi tray front cover
46	NGERH0021QSZZ	AD		C	Manual feeding gear
48	LSÖU-0002QSZZ	AL		C	Multi tray 1
49	LSÖU-0003QSZZ	AK		C	Multi tray 2
50	MSPRC0109QSZZ	AC		C	Spring
501	CSÖU-0002QS52	AY		B	Multi manual paper feeding tray unit
502	CFRM-0010QS51	BG		E	Multi manual paper feeding unit

18 Multi manual paper feeding unit



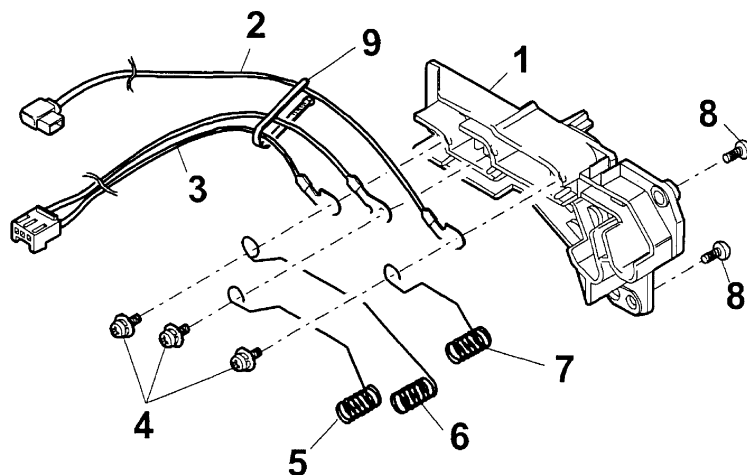
FCP04041

# 19 Socket Holder unit

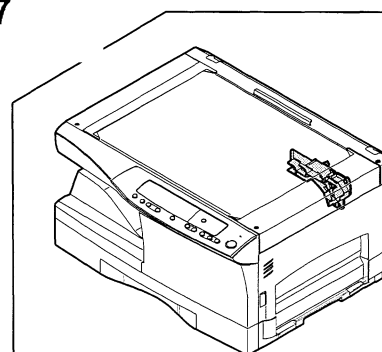
NO.	PARTS CODE	PRICE RANK		NEW MARK	PART RANK	DESCRIPTION
		Ex.	Ja.			
2	CHA i - 0032QS51	AL	EB	N	E	MC harness unit
3	CHA i - 0028QS51	AL	EB	N	E	GB-MCFB harness unit
4	XBPC30P06ES0	AA	DD	N	C	Screw (3x6ES)
5	MSPRC0017QSZZ	AC	DJ	N	C	HV terminal spring
6	MSPRC0018QSZZ	AC	DJ	N	C	HV terminal spring
7	MSPRC0016QSZZ	AC	DJ	N	C	HV terminal spring
8	XEBSD30P08000	AA	DD		C	Screw (3x8)

NO.	PARTS CODE	PRICE RANK	NEW MARK	PART RANK	DESCRIPTION
1	LHLDZ0009QSDZ	AG		C	HV interface holder
9	LBNDJ0013FCZ1	AA		C	Wire band

# 19 Socket Holder unit



FCP04167

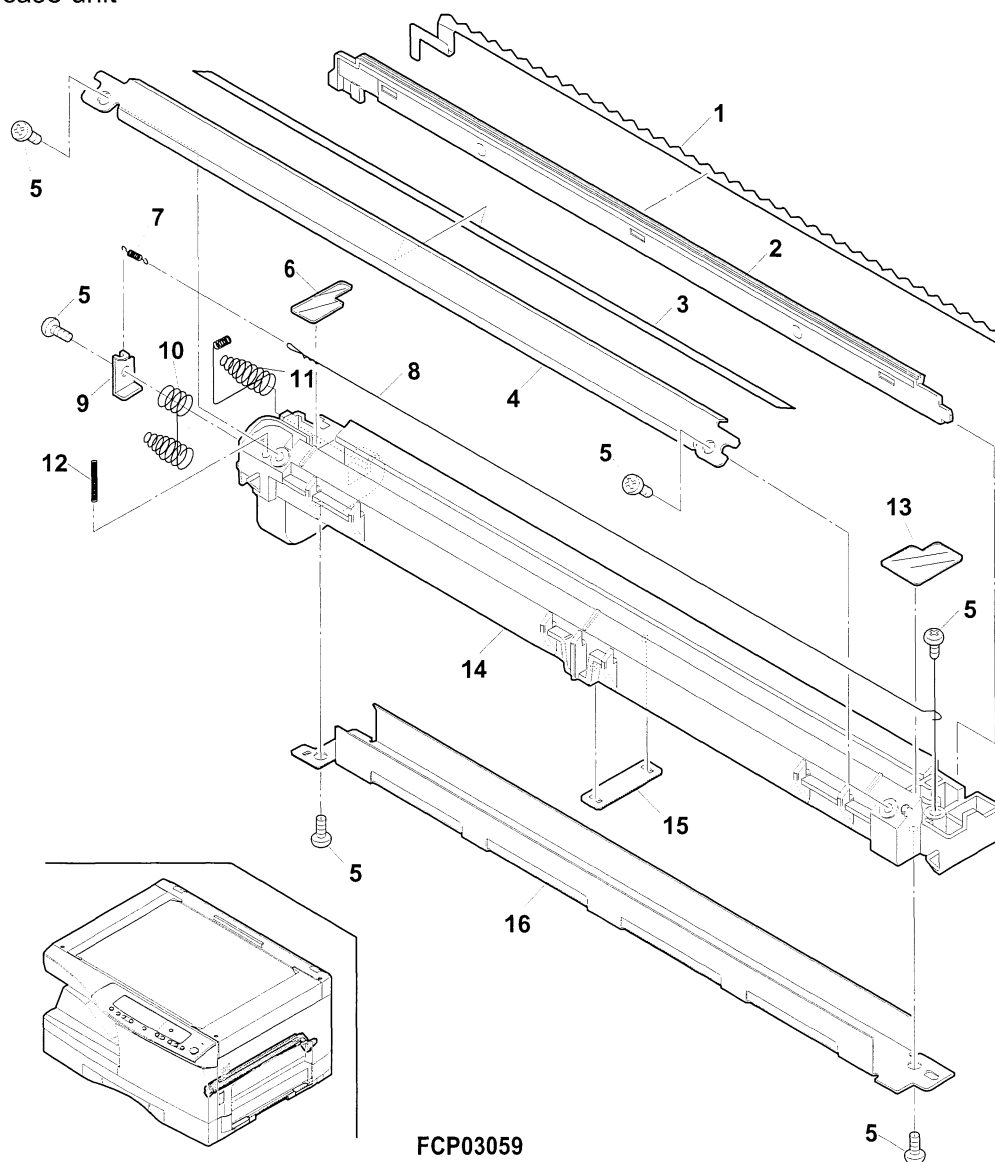


## 20 TC case unit

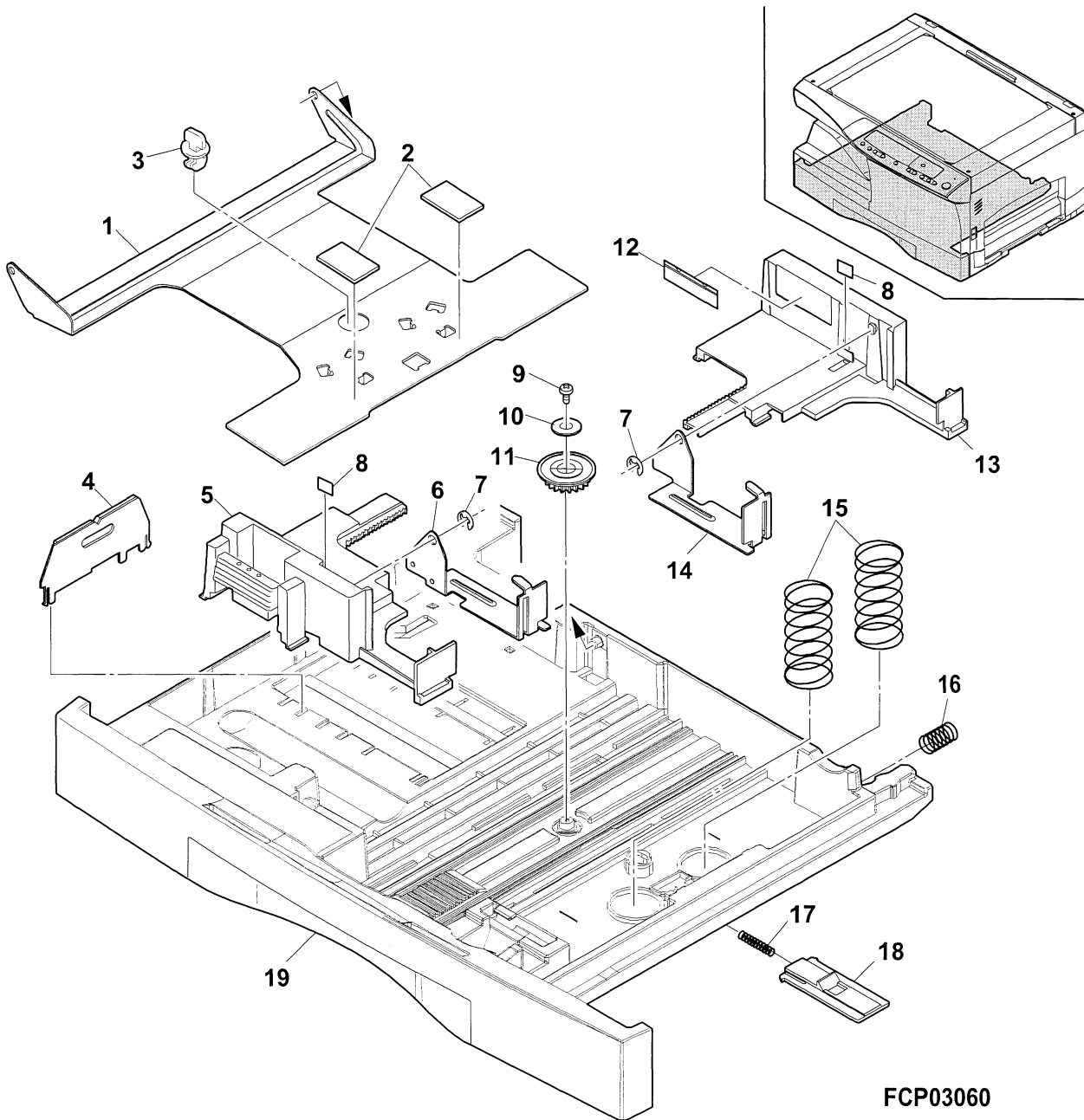
NO.	PARTS CODE	PRICE RANK		NEW MARK	PART RANK	DESCRIPTION
		Ex.	Ja.			
1	PSHEZ0018QSZZ	AF	DS	N	C	Discharge plate sheet
2	PGiDM0011QSZZ	AE	DS	N	C	Separator guide
4	PGiDH0025QSZ1	AG	DX	N	C	TC front guide
5	XEBSD30P06000	AA	DD		C	Screw (3x6)
6	PSHEP0021QSZZ	AA	DJ	N	C	TC cover sheet R
7	MSPRT0513FCZ1	AA	DJ		C	MC tension spring
8	DWiR-0466CSZZ	BG	HC		B	Charger wire
9	QSLP-0007QSZZ	AC	DJ	N	C	TC electrode plate
10	MSPRC0027QSZZ	AC	DJ	N	C	TC electrode spring
11	MSPRC0028QSZZ	AC	DJ	N	C	BC electrode spring
12	MSPRC0051QSZZ	AA	DJ	N	C	Front guide earth spring
13	PSHEP0020QSZZ	AB	DJ	N	C	TC cover sheet F
15	LFiX-0004QSZZ	AC	DJ	N	C	Holer fixing plate
16	PCASZ0002QSZZ	AL	EB	N	C	TC case

NO.	PARTS CODE	PRICE RANK	NEW MARK	PART RANK	DESCRIPTION
3	PSHEP0019QSZ1	AC		C	TC sheet
14	LHLDZ0010QSZ1	AL		C	TC holder
	(Unit)				
901	CHLDZ0010QS52	AU		E	Transcription holder unit

## 20 TC case unit



21 250 sheets tray





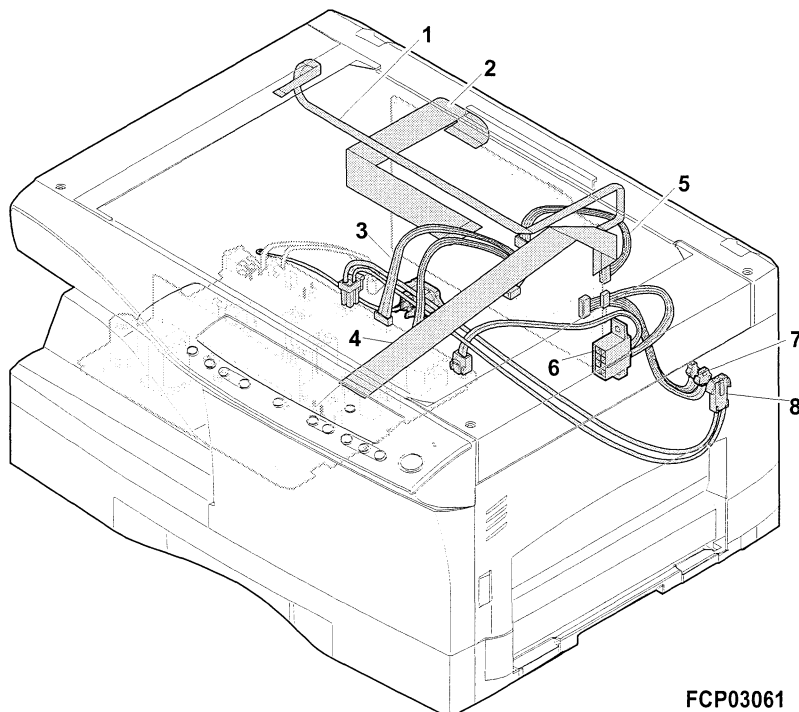
## 21 250 sheets tray

NO.	PARTS CODE	PRICE RANK		NEW MARK	PART RANK	DESCRIPTION
		Ex.	Ja.			
1	LPLTM5106FCZZ	AR	EQ		C	Turning plate 250
2	PSHEZ4142FCZZ	AC	DJ		C	Rotation plate sheet
3	LHLDW1226FCZZ	AB	DJ		C	Turn fasner
4	LPLTM2642FCGZ	AD	DS		C	Tray rear plate
5	LPLTP5107FCZZ	AH	DX		C	250 tray side plate F
6	PTME-0255FCZZ	AG	DS		C	250 tray pawl F
7	XRESP40-06000	AA	DD		C	E type ring
8	PSHEP0061QSZZ	AA	DJ	N	C	Tray guide sheet
9	XEBSE30P08000	AA	DD		C	Screw (3x8)
10	LX-WZ2028SCZZ	AA	DD		C	Washer (3x10)
11	NGERH0193FCZZ	AB	DD		C	UC manual feed gear
12	TLABZ3568FCZZ	AB	DJ		C	Indication label
13	LPLTP5108FCZZ	AH	DX		C	250 tray side plate R
14	PTME-0256FCZZ	AG	DS		C	250 tray pawl R
15	MSPRC0108QSZZ	AC	DJ	N	C	250 Tray spring
16	MSPRC1873FCZ1	AB	DJ		C	Tray spring
17	MSPRC1145FCZZ	AA	DD		C	Stopper spring
18	LSTPP0161FCZZ	AB	DD		C	Rotation plate stopper
19	GCASP0001QSZZ	AY	FQ	N	D	250 Tray case
(Unit)						
901	CCASP0001QS53	BD		N	E	250 Tray unit

## 22 Harness

NO.	PARTS CODE	PRICE RANK		NEW MARK	PART RANK	DESCRIPTION
		Ex.	Ja.			
1	DHAi-0041QSZZ	AF	DS	N	C	CL lead harness
2	DHAi-0042QSZZ	AK	EB	N	C	ICU-CCD harness
3	DHAi-0039QSZZ	BD	GJ	N	C	Center frame harness (100V series)
	DHAi-0064QSZZ	AV		N	C	Center frame harness (200V series)
4	DHAi-0040QSZZ	AK	DX	N	C	OP harness
5	DHAi-0045QSZZ	AD	DJ	N	C	Main motor harness
6	DHAi-0038QSZZ	AS	EQ	N	C	DVS harness
7	DHAi-0037QSZZ	AS	EQ	N	C	PPD2 interface harness
8	DHAi-0029QSZZ	AN	EG	N	C	HL harness 1 (100V series)
	DHAi-0057QSZZ	AN	EG	N	C	HL harness 1 (200V series)

## 22 Harness



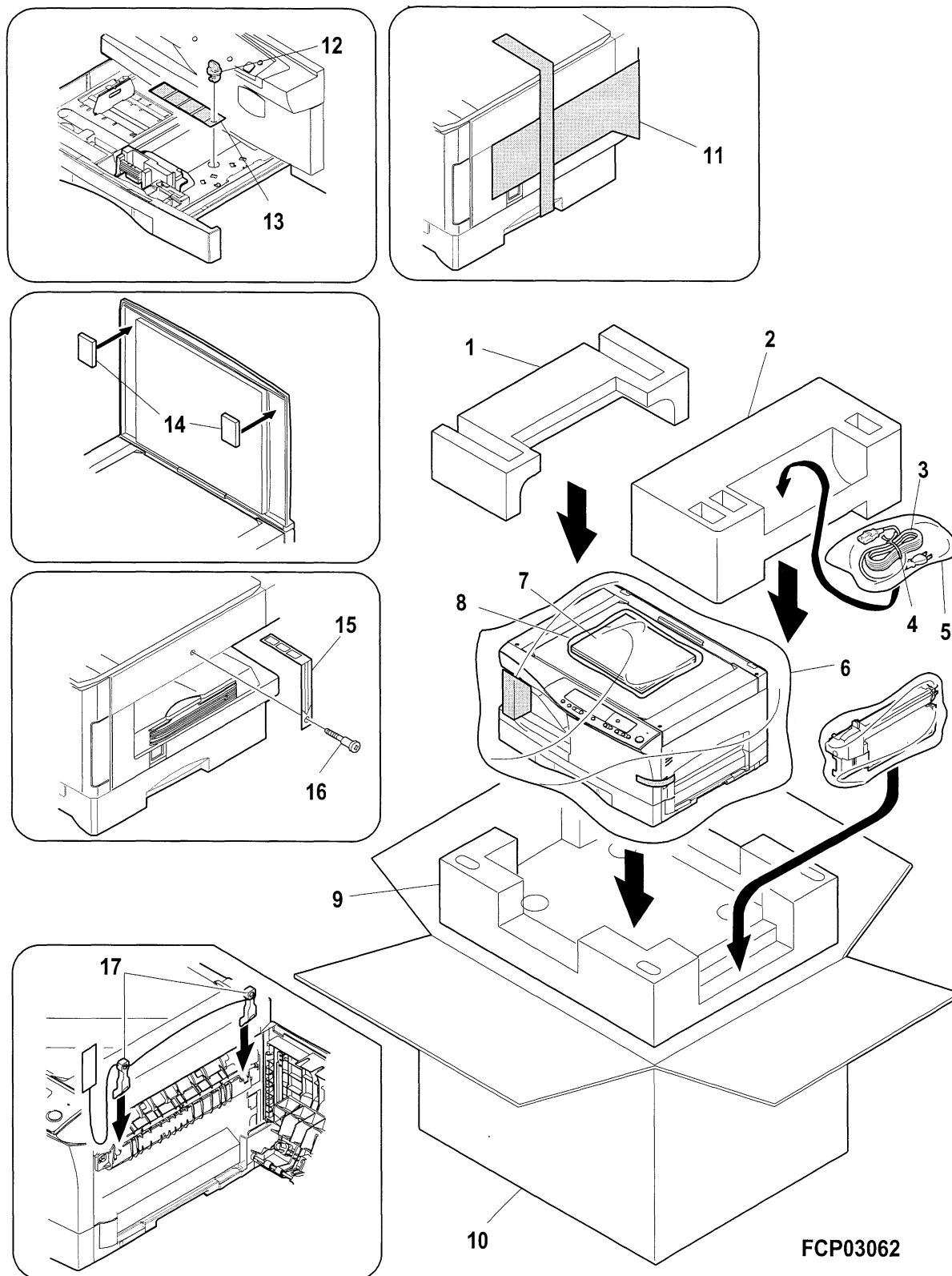
FCP03061

### 23 Packing material & Accessories

NO.	PARTS CODE	PRICE RANK		NEW MARK	PART RANK	DESCRIPTION
		Ex.	Ja.			
1	SPAKA0049QSZZ	AP	EQ	N	D	Top packing cushion Left
2	SPAKA0048QSZZ	AP	EQ	N	D	Top packing cushion Right
4	UBNDA0001FCZZ	AA	DD		C	AC cord band
5	SSAKA5003CCZZ	AA	DD		D	Vinyl bag (140×260mm)
6	UBAGF0039FCZZ	AG	DS		D	Vinyl bag for body
9	SPAKA0047QSZZ	AX	FG	N	D	Bottom packing cushion
11	SPAKA0050QSZZ	AE	DJ	N	D	Fixer packing cushion
12	LHLDW1226FCZZ	AB	DJ		C	Turn fasner
13	TTAG-0002QSZZ	AB	DJ	N	C	Tray rotation tag
14	SPAKA0051QSZZ	AC	DJ	N	D	OC packing cushion
15	TTAG-0003QSZZ	AC	DJ	N	C	Mirror fixing tag
16	LX-BZ0001QSZZ	AD	DJ		C	2nd,3rd mirror unit fixing screw
17	CLEVP0016QS01	AL	EB	N	C	Pressure block lever
101	TCADZ0014QSZZ	AE	DJ	N	D	MSDS card (USA,CANADA,U,Kingdom)
102	TGANJ0005QSZZ	AL	EB	N	D	Warranty card (Japan)
	TGANJ0006QSZZ	AL	EB	N	D	Warranty card (Japan)
	TGANE0009QSZZ	AL	EB	N	D	Warranty card (USA)
	TCADS0764FCZ1	AD	DJ		D	Warranty card (U,Kingdom)
103	TLABH3591FCZZ	AB	DJ		C	Service label (USA)
104	SPAKA0068QSZZ	AD	DJ	N	D	Front exterior sub packing cushion (USA,CANADA)

NO.	PARTS CODE	PRICE RANK	NEW MARK	PART RANK	DESCRIPTION
3	QACCD7618QCZZ	AQ		B	AC cord (L2,Brazil,LAG2)
	QACCR7621QCZZ	AZ		B	AC cord (LAG4,L4)
	QACCB7521QCZZ	AS		B	AC cord (South Africa)
	QACCV6621QCN1	AU		B	AC cord (Russian,Lebasnon,Iran,Indonesia,Thailand,LAG3,Pakistan)
	QACCV9610QCZZ	AR		B	AC cord (Philippines)
	QACCF7620QCZZ	AX		B	AC cord (Singapore,Malaysia)
	QACCB7620QCZZ	AY		B	AC cord (Saudi Arabia)
	QACCB7622QCN1	AZ		B	AC cord (Hong Kong)
7	T i N S S 0 3 8 1 T S Z Z	*	N	D	Operation manual (Spanish)
	T i N S E 0 3 7 8 Q S Z Z	*	N	D	Operation manual (English)
	T i N S Z 0 3 7 9 Q S Z Z	*	N	D	Operation manual (Arabic)
	T i N S F 0 3 8 0 Q S Z Z	*	N	D	Operation manual (French)
	T i N S E 0 3 8 2 Q S Z Z	*	N	D	Operation manual (Hong Kong)
	T i N S R 0 3 8 3 Q S Z Z	*	N	D	Operation manual (Russian)
8	SSAKA2341QSZZ	AA		C	Vinyl bag (230×340mm)(Except AR-150E L2,L4)
10	SPAKC0052TS6C	*	N	D	Packing case (AR-150E L2,L4)
	SPAKC0052QS63	*	N	D	Packing case (AR-150E)
	SPAKC0052QS64	*	N	D	Packing case (AR-120E)
105	TCAUH0007QSZZ	AD		D	Caution label (L4)
106	TLABZ0106QSZZ	AF	N	C	Label (L4)
107	TCAUS0009QSZZ	AF		C	Card (LAG4)
108	QCNW-0122FCZZ	AR		C	Lead wire (127V)(Saudi Arabia)
109	QPLGA0002QCZZ	AN		C	Plug (125V)(Saudi Arabia)
110	QTANP0096FCZZ	AA		C	Terminal (Saudi Arabia)
111	PHOG-1023CCZZ	AB		C	Plug protector (South Africa)
112	QPLGA4171CCZZ	AN		C	Plug (South Africa)(250V)
113	QPLGA0001QCZZ	AN		C	Plug (Brazil)(250V)
114	GCÖVZ0149FCZZ	AU		C	Dust cover (Lebanon,Iran,Saudi Arabia,)

## 23 Packing material & Accessories



# 24 MCU PWB

NO.	PARTS CODE	PRICE RANK	NEW MARK	PART RANK	DESCRIPTION
1	VH i 3 4 1 2 5 6 S J 1 2	AN		B	IC (N341256SJ-12) [IC104,IC107,IC115,IC116]
2	VH i ULN2003AN1	AE		B	IC (ULN2003A) [IC103,IC102]
3	PGSK-0002QSZZ	AD		C	Gasket
4	PSHEZ0110QSZZ	AB		C	MCU insulator
5	QCNCM0923FC18	AF		C	Connector (B18B-PHDSS-B) [CN119]
6	QCNCM0923FC24	AF		C	Connector (B24B-PHDSS-B) [CN101]
7	QCNCM1005MCZZ	AB		C	Connector (B2P-VH) [CN105]
8	QCNCM1069AC0D	AC		C	Connector (B4P-VH) [CN103]
9	QCNCM1119LC0E	AC		C	Connector (B5B-PH-K-M) [CN109]
10	QCNCM2401SC0C	AB		C	Connector (B3B-PH-K-R) [CN111]
11	QCNCM2401SC0D	AC		C	Connector (B4B-PH-K-R) [CN112]
12	QCNCM2401SC0E	AC		C	Connector (B5B-PH-K-R) [CN110]
13	QCNCM2401SC0F	AB		C	Connector (B6B-PH-K-R) [CN117]
14	QCNCM7014SC0C	AA		C	Connector (B3B-PH-K-S) [CN104,CN118,CN125]
15	QCNCM7014SC0D	AB		C	Connector (B4B-PH-K-S) [CN107]
16	QCNCM7014SC0E	AB		C	Connector (B5B-PH-K-S) [CN120]
17	QCNCPO340QCZZ	AC		C	Connector (B3B-PH-K-K) [CN102]
18	QCNCW0012QSZZ	AH		C	Connector (52340-0401(40pin)) [CN108]
19	QCNCW0015QSZZ	AE		C	Connector (52147-0510(5pin)) [CN122]
20	QCNCW0024QSZZ	AF		C	Connector (FF4-32-S15D5) [CN124]
21	QCNCW1124LC0D	AB		C	Connector (04FE-BT-VK-N) [CN121]
22	QCNCW1124LC0H	AC		C	Connector (08FE-BT-VK-N) [CN113]
23	QCNCW1124LC1H	AD		C	Connector (18FE-BT-VK-N) [CN116]
24	QCNCW1124LC2F	AD		C	Connector (26FE-BT-VK-N) [CN114]
25	QSOCZ0002GCZZ	AD		C	IC socket (40pin) [(IC105)]
26	QSOCZ6408ACZZ	AB		C	8P DIP socket (8pin) [(IC112)]
27	RC i LZ0003QSZZ	AC		C	Coil (HF50ACC201209) [L104,L105,L106,L110,L111,L112]
28	RC i LZ0004QSZZ	AE		C	Coil (NFM839R02C470R101) [NF102,NF101]
29	RC i LZ1032CCZZ	AD		C	Coil (SBO-02SAN) [L101,L102,L103,L107,L108,L109]
30	RCRSZ0001QSZZ	AG		B	Crystal (AT-51(19.6608MHz)) [X101]
31	RCRSZ0002QSZZ	AP		B	Crystal (1329(15.4265MHz)) [X102]
32	RCRSZ0003QSZZ	AP		B	Crystal (1330(22.0000MHz)) [X103]
33	RH-DZ0016FCZZ	AB		B	Diode (MA700) [D108]
34	RMPTW4100QCJJ	AA		B	Block resistor (10K $\times$ 4) [BR130,BR134,BR136,BR139,BR156, BR157,BR171,BR173]
35	RMPTW4102QCJJ	AB		B	Block resistor (1.0K $\times$ 4) [BR119,BR120]
36	RMPTW4203QCJJ	AA		B	Block resistor (20K $\times$ 4 1/32W $\pm$ 5%) [BR101,BR102,BR103,BR104,BR105,BR106,BR107,BR108,BR109,BR110]
37	RMPTW4203QCJJ	AA		B	Block resistor (20K $\times$ 4 1/32W $\pm$ 5%) [BR111,BR112,BR113,BR114,BR115,BR116,BR117,BR118,BR121,BR122]
38	RMPTW4203QCJJ	AA		B	Block resistor (20K $\times$ 4 1/32W $\pm$ 5%) [BR127,BR128,BR129,BR137,BR141,BR142,BR143,BR144,BR145,BR146]
39	RMPTW4203QCJJ	AA		B	Block resistor (20K $\times$ 4 1/32W $\pm$ 5%) [BR147,BR148,BR149,BR150,BR151]
40	RMPTW4203QCJJ	AA		B	Block resistor (20K $\times$ 4 1/32W $\pm$ 5%) [BR161,BR164,BR165,BR166,BR167,BR168]
41	RMPTW4300QCJJ	AA		B	Block resistor (30K $\times$ 4 1/32W $\pm$ 5%) [BR172,BR170]

# 24 MCU PWB

NO.	PARTS CODE	PRICE RANK	NEW MARK	PART RANK	DESCRIPTION
42	RMP T W 4 4 7 0 Q C J J	AB		B	Block resistor (47Ω×4 1/32W ±5%) [BR123,BR124,BR125,BR126,BR131,BR132,BR133,BR135,BR138,BR140]
43	RMP T W 4 4 7 0 Q C J J	AB		B	Block resistor (47Ω×4 1/32W ±5%) [BR152,BR153,BR154,BR155,BR158,BR159,BR160,BR162,BR163]
44	T L A B Z 3 4 0 5 F C Z Z	AB		D	Version label
46	V C C C C Y 1 H H 1 0 1 J	AA		C	Capacitor (100pF/50V) [C296,C297,C298,C299,C300,C304,C306,C307,C312,C319]
47	V C C C C Y 1 H H 1 0 1 J	AA		C	Capacitor (100pF/50V) [C320,C321,C324,C333,C334,C335,C336,C337,C338,C344]
48	V C C C C Y 1 H H 1 0 1 J	AA		C	Capacitor (100pF/50V) [C345,C346,C348,C355,C356,C361,C362,C365,C366,C371]
49	V C C C C Y 1 H H 1 2 0 J	AA		C	Capacitor (12pF/50V) [C378,C358]
50	V C C C C Y 1 H H 1 8 0 J	AA		C	Capacitor (18pF/50V) [C213,C351,C352,C390,C391,C393,C394,C396,C404,C447,C448,C449,C450]
51	V C C C C Y 1 H H 3 3 0 J	AA		C	Capacitor (33pF/50V) [C305,C314,C317,C374,C414,C415,C416,C417,C424,C425,C426,C427]
52	V C C C C Y 1 H H 4 7 0 J	AA		C	Capacitor (47pF/50V) [C209,C210,C211,C212,C214,C231,C232,C233,C234,C235]
53	V C C C C Y 1 H H 4 7 0 J	AA		C	Capacitor (47pF/50V) [C236,C237,C238,C240,C241,C242,C243,C247,C248,C249]
54	V C C C C Y 1 H H 4 7 0 J	AA		C	Capacitor (47pF/50V) [C250,C251,C252,C253,C254,C260,C268,C269,C270,C271]
55	V C C C C Y 1 H H 4 7 0 J	AA		C	Capacitor (47pF/50V) [C272,C273,C285,C286,C287,C308,C316,C332,C342,C343]
56	V C C C C Y 1 H H 4 7 0 J	AA		C	Capacitor (47pF/50V) [C360,C370,C429]
57	V C E A G A 1 C W 1 0 6 M	AA		C	Capacitor (10μF/16V) [C106,C109,C110,C113]
58	V C E A G A 1 C W 1 0 7 M	AC		C	Capacitor (100μF/16V) [C102]
59	V C E A G A 1 C W 2 2 6 M	AB		C	Capacitor (22μF/16V) [C101,C108]
60	V C E A G A 1 C W 4 7 6 M	AB		C	Capacitor (47μF/16V) [C116]
61	V C E A G A 1 E W 1 0 6 M	AA		C	Capacitor (10μF/25V) [C114,C115]
62	V C E A G A 1 E W 4 7 6 M	AA		C	Capacitor (47μF/25V) [C112]
63	V C E A G A 1 H W 4 7 4 M	AB		C	Capacitor (0.47μF/50V) [C104]
64	V C E A G A 1 V W 1 0 6 M	AA		C	Capacitor (10μF/35V) [C105]
65	V C E A G A 1 V W 2 2 6 M	AC		C	Capacitor (22μF/35V) [C103]
66	V C E A G A 1 V W 4 7 6 M	AB		C	Capacitor (47μF/35V) [C111]
67	V C K Y C Y 1 C F 1 0 4 Z	AA		C	Capacitor (0.1μF/16V) [C201,C206,C207,C208,C216,C245,C257,C258,C259,C274]
68	V C K Y C Y 1 C F 1 0 4 Z	AA		C	Capacitor (0.1μF/16V) [C295,C309,C310,C313,C315,C318,C322,C323,C325,C326]
69	V C K Y C Y 1 C F 1 0 4 Z	AA		C	Capacitor (0.1μF/16V) [C327,C328,C329,C330,C340,C341,C347,C353,C354,C357]
70	V C K Y C Y 1 C F 1 0 4 Z	AA		C	Capacitor (0.1μF/16V) [C359,C363,C375,C381,C385,C389,C392,C397,C408,C409]
71	V C K Y C Y 1 C F 1 0 4 Z	AA		C	Capacitor (0.1μF/16V) [C410,C413,C420,C421,C422,C423,C428,C432,C433]
72	V C K Y C Y 1 E B 2 2 3 K	AA		C	Capacitor (22000pF/25V) [C219,C246,C264,C265,C303,C376,C380,C382,C386,C412]
73	V C K Y C Y 1 H B 1 0 2 K	AA		C	Capacitor (1000pF/50V) [C217,C261,C262,C263,C277,C278,C288,C290,C291,C301]
74	V C K Y C Y 1 H B 1 0 2 K	AA		C	Capacitor (1000pF/50V) [C311,C331,C339,C349,C350,C364,C367,C368,C369,C377]
75	V C K Y C Y 1 H B 1 0 2 K	AA		C	Capacitor (1000pF/50V) [C379,C384,C387,C395,C405,C406,C407,C418,C419]
76	V C K Y C Y 1 H B 1 0 2 K	AA		C	Capacitor (1000pF/50V) [C430,C431,C435]
77	V C K Y C Y 1 H B 2 2 2 K	AA		C	Capacitor (2200pF/50V) [C205,C400,C401,C411]
78	V C K Y C Y 1 H B 4 7 1 K	AB		C	Capacitor (470pF/50V) [C372,C373]
79	V C K Y T W 1 H B 1 0 4 K	AC		C	Capacitor (0.1μF/50V) [C215]
80	V C Q Y N A 1 H M 1 0 4 K	AB		C	Capacitor (0.1μF/50V) [C107]
81	V H D 1 N 4 0 0 5 E / - 1	AB		B	Diode (1N4005) [D102]
82	V H D D A 2 0 4 K / - 1	AC		B	Diode (DA204K) [D201,D203,D205,D206,D207]
83	V H D D A N 2 0 2 U / - 1	AB		B	Diode (DAN202U) [D113,D114,D115,D117,D118,D121,D122,D126]
84	V H D D A P 2 0 2 U / - 1	AB		B	Diode (DAP202U) [D110,D111,D112,D116,D119,D120,D124]
85	V H D D S S 1 3 3 / - 1	AA		B	Diode (1SS133) [D101,D103,D104,D105,D106,D107,D109,D125,D130]
86	V H i 7 4 V H C 0 8 / - 1	AE		B	IC (74VHC08) [IC204]
87	V H i H 8 S / 2 3 5 0 F P	AY		B	CPU (H8S/2350) [IC108]
88	V H i H G 7 3 C 0 2 5 F D	BE		B	IC (HG73C039FD) [IC110]
89	V H i L M 3 5 8 P S / - S	AC		B	IC (LM358) [IC209]
90	V H i M 2 4 C 0 2 W B N 6	AG		B	IC (M24C02-WBN6) [IC112]
91	V H i M 5 1 9 5 3 B L - 1	AF		B	IC (M51953) [IC106]
92	V H i M 6 6 2 3 6 F P - 1	AT		B	IC (M66236FP) [IC208]
93	V H i 2 7 C 0 2 0 1 5 Q S	AZ	N	B	2M EPROM (AR-150EAE/AR-150EBE) [IC105]
	V H i 2 7 C 0 2 0 2 5 Q S	AZ	N	B	2M EPROM (L2,L4) [IC105]
	V H i 2 7 C 0 1 0 1 4 Q S	AX	N	B	2M EPROM (AR-120EAE/AR-120EBE) [IC105]
94	V H i N J M 2 9 0 3 M / -	AD		B	IC (NJM2903M) [IC201]
95	V H i N J M 3 4 1 4 M - 1	AF		B	IC (NJM3414AM) [IC210]
96	V H i S L A 7 0 2 7 M U /	AQ		B	IC (SLA7027MU) [IC113]
97	V H i S N 7 4 L S 0 7 N S	AF		B	IC (74LS07) [IC207,IC205]
98	V H i T A 7 2 9 1 S / - 1	AF		B	IC (TA7291S) [IC101]
99	V H i T C 7 4 H C 1 4 F N	AH		B	IC (74HC14) [IC211]
100	V H i T C 7 4 H C 1 5 1 F	AG		B	IC (74HC151) [IC203,IC206]
101	V H i T D 6 2 5 0 3 F / -	AG		B	IC (TD62503) [IC109]
102	V H V i C P N 3 8 / - 1	AF		B	IC protector (ICP-N38) [CP102]
103	V R S - C Y 1 J D 0 0 0 J	AA		C	Resistor (1/16W 0Ω ±5%) [R247,R272,J203]
104	V R S - C Y 1 J D 1 0 0 J	AA		C	Resistor (1/16W 10Ω ±5%) [R246,R248,R253,R257,R294,R301]
105	V R S - C Y 1 J D 1 0 1 J	AA		C	Resistor (1/16W 100Ω ±5%) [R273,R304,R319]
106	V R S - C Y 1 J D 1 0 2 F	AA		C	Resistor (1/16W 1KΩ ±1%) [R214]
107	V R S - C Y 1 J D 1 0 2 J	AA		C	Resistor (1/16W 1.0KΩ ±5%) [R206,R228,R229,R231,R239,R251,R252,R261,R277,R284]
108	V R S - C Y 1 J D 1 0 2 J	AA		C	Resistor (1/16W 1.0KΩ ±5%) [R295,R303,R331,R333,R339,R340]
109	V R S - C Y 1 J D 1 0 3 F	AB		C	Resistor (1/16W 10KΩ ±1%) [R215,R223,R328,R329]
110	V R S - C Y 1 J D 1 0 3 J	AA		C	Resistor (1/16W 10KΩ ±5%) [R207,R226,R234,R240,R244,R258,R262,R264]
111	V R S - C Y 1 J D 1 0 3 J	AA		C	Resistor (1/16W 10KΩ ±5%) [R265,R276,R282,R283,R310,R311]
112	V R S - C Y 1 J D 1 0 5 F	AA		C	Resistor (1/16W 1.0MΩ ±1%) [R218]
113	V R S - C Y 1 J D 1 2 2 J	AA		C	Resistor (1/16W 1.2KΩ ±5%) [R220]
114	V R S - C Y 1 J D 1 5 2 J	AA		C	Resistor (1/16W 1.5KΩ ±5%) [R287,R288,R291]
115	V R S - C Y 1 J D 2 0 2 J	AA		C	Resistor (1/16W 2.0KΩ ±5%) [R297]

# 24 MCU PWB

NO.	PARTS CODE	PRICE RANK	NEW MARK	PART RANK	DESCRIPTION
116	VRS-CY1JD203J	AA		C	Resistor (1/16W 20KΩ ±5%) [R225,R227,R230,R241,R242, R243,R245,R250,R254,R256]
117	VRS-CY1JD203J	AA		C	Resistor (1/16W 20KΩ ±5%) [R269,R274,R275,R281,R293, R300,R341,R342]
118	VRS-CY1JD205J	AA		C	Resistor (1/16W 2.0MΩ ±5%) [R322,R325]
119	VRS-CY1JD242J	AA		C	Resistor (1/16W 2.4KΩ ±5%) [R320,R321]
120	VRS-CY1JD301J	AA		C	Resistor (1/16W 300Ω ±5%) [R312,R298]
121	VRS-CY1JD331J	AA		C	Resistor (1/16W 330Ω ±5%) [R280]
122	VRS-CY1JD332J	AA		C	Resistor (1/16W 3.3KΩ ±5%) [R255]
123	VRS-CY1JD333J	AA		C	Resistor (1/16W 33KΩ ±5%) [R213]
124	VRS-CY1JD470J	AA		C	Resistor (1/16W 47Ω ±5%) [R235,R260,R263,R266,R267, R268,R270,R271]
125	VRS-CY1JD470J	AA		C	Resistor (1/16W 47Ω ±5%) [R292,R305,R313,R317]
126	VRS-CY1JD472J	AA		C	Resistor (1/16W 4.7KΩ ±5%) [R209,R216,R296]
127	VRS-CY1JD473J	AA		C	Resistor (1/16W 47KΩ ±5%) [R204,R205,R208,R210,R307,R308]
128	VRS-CY1JD512J	AA		C	Resistor (1/16W 5.1KΩ ±5%) [R332]
129	VRS-CY1JD621F	AA		C	Resistor (1/16W 620Ω ±1%) [R221]
130	VRS-CY1JD621J	AA		C	Resistor (1/16W 620Ω ±5%) [R299]
131	VRS-CY1JD680J	AA		C	Resistor (1/16W 68Ω ±5%) [R259]
132	VRS-CY1JD751J	AA		C	Resistor (1/16W 75Ω ±5%) [R309]
133	VRS-CY1JD752J	AA		C	Resistor (1/16W 7.5KΩ ±5%) [R217,R236,R302]
134	VRS-CY1JD912J	AA		C	Resistor (1/16W 9.1KΩ ±5%) [R334]
135	VRS-HT3DA102J	AA		C	Resistor (2W 1.0KΩ ±5%) [R101]
136	VRS-HT3DA1R0J	AB		C	Resistor (2W 1.0Ω ±5%) [R104,R105]
137	VRS-HT3DAR22J	AA		C	Resistor (2W 0.22Ω ±5%) [R102]
138	VRS-TP2BD121J	AA		C	Resistor (1/8W 120Ω ±5%) [R249]
139	VRS-TP2BD151J	AA		C	Resistor (1/8W 150Ω ±5%) [R219,R224,R318,R338]
140	VRS-TP2BD221J	AB		C	Resistor (1/8W 220Ω ±5%) [R222]
141	VRS-TP2BD241J	AA		C	Resistor (1/8W 240Ω ±5%) [R202,R203]
142	VRS-TP2BD432J	AA		C	Resistor (1/8W 4.3KΩ ±5%) [R212]
143	VRS-TP2BD472J	AA		C	Resistor (1/8W 4.7KΩ±5%) [R211,R201]
144	VS2SA1036KQRC	AB		B	Transistor (2SA1036K) [Q201,Q203]
145	VSDTA143XK/-1	AB		B	Transistor (DTA143XKA) [Q204]
146	VSDTC114EKA-1	AC		B	Transistor (DTC114EKA) [Q202]
	(Unit)				
901	CPWBX0062QS5F	CA	N	E	MCU PWB (AR-150E, L2,L4)

## 25 Operation PWB

NO.	PARTS CODE	PRICE RANK		NEW MARK	PART RANK	DESCRIPTION
		Ex.	Ja.			
1	PSPAZ0005QSZZ	AC	DJ	N	C	Spacer [for LEDM]
2	QCNCM0861FCZZ	AB	DJ		C	Connector (3pin) [CN802]
3	QCNCW1132LC1H	AD	DJ	N	C	Connector (18pin) [CN801]
5	VCCCTV1HH201J	AA	DD		C	Capacitor (50WV 200PF) [C904,905,906]
6	VCEAJU1CW476M	AB	DD		C	Capacitor (16WV 47μF) [C802]
7	VCKYTV1EB104K	AA	DD		C	Capacitor (25WV 0.10μF) [C907,908]
8	VCKYTV1HB102K	AA	DD		C	Capacitor (50WV 1000PF) [C909-920,922]
9	VCKYTV1HB223K	AA	DD		C	Capacitor (50WV 0.022μF) [C901,903]
10	VHDDSS133//--1	AA	DD		B	Diode (DSS133) [D801-810]
11	VHiLC7935//--1	AN	EQ		B	IC (LC7935) [IC901]
12	VHiTC74HC151F	AG	DS	N	B	IC (TC74HC151F) [IC902,903]
13	VHPLTC3650G01	AQ	EQ	N	B	Photo transistor (LTC3650G01) [LEDM]
16	VRS-TP2BD000J	AA	DD		C	Resistor (1/8W 0Ω ±5%)
17	VRS-TS2AD101J	AA	DD		C	Resistor (1/10W 100Ω ±5%) [R948-960]
18	VRS-TS2AD102J	AA	DD		C	Resistor (1/10W 1.0KΩ ±5%) [R932-935,944-946]
19	VRS-TS2AD103J	AA	DD		C	Resistor (1/10W 10KΩ ±5%) [R962]
20	VRS-TS2AD121J	AA	DD		C	Resistor (1/10W 120Ω ±5%) [R902-918]
21	VRS-TS2AD151J	AA	DD		C	Resistor (1/10W 150Ω ±5%) [R939-941]
22	VRS-TS2AD152J	AA	DD		C	Resistor (1/10W 1.5KΩ ±5%) [R936,937,938]
23	VRS-TS2AD472J	AA	DD		C	Resistor (1/10W 4.7KΩ ±5%) [R919-930,947]
24	VRS-TS2AD511J	AA	DD		C	Resistor (1/10W 510Ω ±5%) [R942,943]
25	VSDTB113ZK/-1	AD	DJ		B	Transistor (DTB113ZK) [Q901,902,903]

NO.	PARTS CODE	PRICE RANK		NEW MARK	PART RANK	DESCRIPTION
		Ex.	Ja.			
4	QSW-P0005QSZZ	AC			B	Tact switch (B3F-6102)(LAG4,LAG2,L2,L4) [CLK,PSW,1UPK,10UPK,ZUPK,ZDWK,MAGK,CRSK,EXUPK,EXDWK,EXMODK]
	QSW-P0005QSZZ	AC			B	Tact switch (B3F-6102)(Other countries) [CLK,PSW,1UPK,10UPK,ZUPK,ZDWK,MAGK,CRSK,EXUPK,EXDWK,EXMODK,BPK]
14	VHP1LHHEE-002A	AC			B	LED(Green) (LAG4,LAG2,L2,L4) [RPL,ONLL,ZPL,1ENR,2ENR,NOR,1RE,2RE,3RE,]
	VHP1LHHEE-002A	AC			B	LED(Green) (LAG4,LAG2,L2,L4) [CS1L,EXD,EXN,EXL,AE,ME,PE,PML]
	VHP1LHHEE-002A	AC			B	LED(Green) (Other countries) [RPL,ONLL,ZPL,1ENR,2ENR,NOR,1RE,2RE,3RE,]
	VHP1LHHEE-002A	AC			B	LED(Green) (Other countries) [CS1L,EXD,EXN,EXL,AE,ME,PE,PML,BPL]
15	VHP1LHLE-002A	AC			B	LED(Red) [TPL,MPL,DPL,JPL]
(Unit)						
901	CPWBF0014QS51	BR			E	Operation PWB (LAG4,LAG2,L2,L4)
	CPWBF0014QS52	BR			E	Operation PWB (Other countries)

## 26 MFD sensor PWB

NO.	PARTS CODE	PRICE RANK		NEW MARK	PART RANK	DESCRIPTION
		Ex.	Ja.			
1	DHAi-0061QSZZ	AG	DS	N	C	MFD harness
2	LBNDJ0037FCZ1	AA	DJ		C	Wire band (T18S)
3	VCKYPU1HB102K	AA	DD		C	Capacitor (50WV 1000PF)
4	VHPGP1S53V/-1	AE	DS		B	Photo transistor (GP1S53V)
(Unit)						
901	CPWBF1177FC5B	AG	DX	N	E	MFD sensor PWB

## 27 POD sensor PWB

NO.	PARTS CODE	PRICE RANK		NEW MARK	PART RANK	DESCRIPTION
		Ex.	Ja.			
1	DHAi-0034QSZZ	AQ	EQ	N	C	POD harness
2	LBNDJ0037FCZ1	AA	DJ		C	Wire band (T18S)
3	VCKYPU1HB102K	AA	DD		C	Capacitor (50WV 1000PF)
4	VHPGP1S53V/-1	AE	DS		B	Photo transistor (GP1S53V)
(Unit)						
901	CPWBF1177FC57	AG	DX	N	E	POD sensor PWB

## 28 PPD1 sensor PWB

NO.	PARTS CODE	PRICE RANK		NEW MARK	PART RANK	DESCRIPTION
		Ex.	Ja.			
1	DHAi-0035QSZZ	AF	DS	N	C	PPD1 harness
2	LBNDJ0037FCZ1	AA	DJ		C	Wire band (T18S)
3	VCKYPU1HB102K	AA	DD		C	Capacitor (50WV 1000PF)
4	VHPGP1S53V/-1	AE	DS		B	Photo transistor (GP1S53V)
(Unit)						
901	CPWBF1177FC58	AG	DX	N	E	PPD1sensor PWB

## 29 PPD2 sensor PWB

NO.	PARTS CODE	PRICE RANK		NEW MARK	PART RANK	DESCRIPTION
		Ex.	Ja.			
1	DHA i-0036QSZZ	AQ	EQ	N	C	PPD2 harness
2	LBNDJ0037FCZ1	AA	DJ		C	Wire band (T18S)
3	VCKYPU1HB102K	AA	DD		C	Capacitor (50WV 1000PF)
4	VHPGP1S53V/-1	AE	DS		B	Photo transistor (GP1S53V)
	(Unit)					
901	CPWBF1177FC59	AG	DX	N	E	PPD2 sensor PWB

## 30 DC power supply PWB

NO.	PARTS CODE	PRICE RANK		NEW MARK	PART RANK	DESCRIPTION
		Ex.	Ja.			
1	QPLGJ2326YAZZ	AB	DD		C	Connector (B2P3-VH) [CN11]
2	QPLGZ0430PAZZ	AE	DJ	N	C	Connector (B6-PH-K-S)(6PIN) [CN6]
3	QPLGZ0557PAZZ	AD	DJ	N	C	Connector (B02P-NV) [CN10]
4	QPLGZ0558PAZZ	AE	DS	N	C	Connector (B04P-XL)(100V series) [CN3]
	QPLGZ0560PAZZ	AF	DS	N	C	Connector (B04P-XL)(RED)(200V series) [CN3]
5	QPLGZ0559PAZZ	AG	DS	N	C	Connector (B14B-PH-DSS) [CN1]
6	RATTT0004PAZZ	AP	EQ	N	B	Arrestor (DSA-242MA-05F25)(100V series) [A1]
	RC-EZ0398PAZZ	AV	FG	N	C	Capacitor (680MF/200V MXR)(100V/110V) [C6]
7	RC-EZ0425PAZZ	AR	EQ	N	C	Capacitor (MXR470MF 200V)(120V/127V) [C6]
	RC-EZ0382PAZZ	AR	EQ	N	C	Capacitor (MXR120MF/400V)(200V series) [C6]
8	RC-FZ137DPAZZ	AE	DJ	N	C	Capacitor (PA 0.1MF/250V) [C16]
9	RC-FZ138DPAZZ	AE	DS	N	C	Capacitor (PA 0.22MF/250V) [C3,4B]
10	RC-FZ140DPAZZ	AG	DX	N	C	Capacitor (0.47MF/250V)(200V series) [C1B]
11	RC-KZ4012PAZZ	AD	DJ	N	C	Capacitor (ECKD3A332KB) [C123]
12	RC-KZ4013PAZZ	AC	DD	N	C	Capacitor (ECKD3A102KB) [C143]
13	RC-KZ4014PAZZ	AC	DD	N	C	Capacitor (ECKD3A471KBP) [C10,121,141]
14	RC-KZ4015PAZZ	AC	DD	N	C	Capacitor (KBP 2200PF/1KV) [C50]
15	RC-KZ4018PAZZ	AF	DS	N	C	Capacitor (ECKD4A101MDU) [C182]
	RC-QZ0218PAZZ	AC	DD	N	C	Capacitor (TS 2200PF/250V)(100V series) [C4,5,11]
16	RC-QZ0230PAZZ	AE	DJ	N	C	Capacitor (2200PF/250V)(200V series) [C4,5,11]
	RC-QZ0221PAZZ	AD	DJ	N	C	Capacitor (0.01MF/250V)(100V series) [C7]
	RC-QZ0222PAZZ	AD	DJ	N	C	Capacitor (0.001MF/630V)(200V series) [C7]
18	RC-QZ0232PAZZ	AE	DS	N	C	Capacitor (4700PF/250V)(200V series) [C2B,C3B]
19	RC-QZA102PARK	AC	DD	N	C	Capacitor (102PF/K/50V) [C20]
20	RC-QZA103PARK	AC	DD	N	C	Capacitor (103PF/K/50V) [C8,22,122]
21	RC-QZA104PARK	AC	DD	N	C	Capacitor (104PF/K/50V) [C13,17,21]
22	RC-QZA223PARK	AC	DD	N	C	Capacitor (223PF/K/50V) [C14,C142]
23	RC-QZA273PARK	AC	DD	N	C	Capacitor (273PF/K/50V) [C105,161]
24	RC-QZA472PARK	AC	DD	N	C	Capacitor (472PF/K/50V) [C9]
25	RC-QZA473PARK	AC	DD	N	C	Capacitor (473PF/K/50V) [C102,162]
26	RCORF4092PAZZ	AC	DJ	N	C	Core [BJ2,3]
27	RH-iX1783PAZZ	AF	DS	N	B	IC (1CP-N25) [ICP101]
28	RH-iX1950PAZZ	AF	DS		B	IC (HA17431PA) [IC1,2]
29	RH-iX2251PAZZ	AR	EQ	N	B	IC (PQ30RV31) [IC52]
30	RH-iX2257PAZZ	AK	EB	N	B	IC (BA033T/FP) [IC53]
31	RH-iX2258PAZZ	AH	DX	N	B	IC (78M12) [IC51]
	RH-PX0296PAZZ	AF	DS	N	B	Photo coupler (PC817X2)(100V series) [PC1,3]
	RH-PX0285PAZZ	AF	DS		B	Photo coupler (PC123Y(2))(200V series) [PC1,3]
	RH-PX0307PAZZ	AK	DX	N	B	Photo thyristor (S11MD5V)(100V series) [PC2]
33	RH-PX0308PAZZ	AM	EG	N	B	Photo thyristor (S21ME3)(200V series) [PC2]
34	RR-HZ4022PAZZ	AD	DJ	N	C	Resistor (1/2W 206J) [R146,181,182]
35	RR-HZ4023PAZZ	AD	DJ	N	C	Resistor (1/2W 306J) [R125]
36	RR-HZ4024PAZZ	AD	DJ	N	C	Resistor (1/2W 186J) [R183,184]
37	RR-SN1201PA6F	AB	DD	N	C	Resistor (1/6W 122J) [R25]
38	RR-SN3900PA6F	AB	DD	N	C	Resistor (1/6W 391J) [R26]
39	RR-SZ0034PAZZ	AC	DD		C	Resistor (2W-22Ω) [R9]
40	RR-SZ0048PAZZ	AC	DD	N	C	Resistor (RSS2L15 1KΩ) [R69,71,73]
41	RR-SZ0057PAZZ	AC	DD	N	C	Resistor (2W-330J) [R3]
42	RR-WZ0028PAZZ	AF	DX		C	Resistor (5W-3K RGBS)(100V series) [R1B]
43	RR-XZ0051PAZZ	AC	DD	N	C	Resistor (RF16S-4.7J) [R4]
44	RR-XZ0078PAZZ	AC	DD		C	Resistor (FUSE-R 1/6W-33J) [R12]
45	RR-XZ4002PAZZ	AC	DD	N	C	Resistor (1/4W 121J) [R15,17]
46	RR-XZ4003PAZZ	AC	DD	N	C	Resistor (1/4W 101J) [R16]
47	RRLYZ0100PAZZ	AN	EG	N	B	Relay (OMI-SS-124LM) [RY1]
48	RTRNF5025PAZZ	BA	FX	N	B	MC transformer [T101]
49	RTRNF5026PAZZ	BA	FX	N	B	TC transformer [T102]
	RTRNZ0202PACN	AL	EB	N	B	Line filter (Z0202)(100V/110V) [L1,2]
50	RTRNZ0202PANT	AL	EB	N	B	Line filter (Z0202)(120V/127V) [L1,2]
	RTRNZ0499PACT	AL	EB	N	B	Line filter (Z0499)(200V series) [L1,2]
	RTRNZ0609PANT	AW	FG	N	B	Transformer (Z0609)(100V/110V) [T1]
51	RTRNZ0609PACD	AW	FG	N	B	Transformer (Z0609)(120V/127V) [T1]
	RTRNZ0610PACD	AW	FG	N	B	Transformer (Z0610)(200V series) [T1]
52	RTRNZ0617PANT	AR	EQ	N	B	Line filter (Z0617)(200V series) [L1B]
53	RTRNZ0618PANT	AP	EQ	N	B	Line filter (Z0618)(200V series) [L3]
54	RVR-M0384PAZZ	AD	DJ	N	B	Variable resistor (EVMAASA00 200KJ) [VR121,142]
55	RVR-M0390PAZZ	AD	DJ	N	B	Variable resistor (VR-1K) [VR1]



### 30 DC power supply PWB

NO.	PARTS CODE	PRICE RANK		NEW MARK	PART RANK	DESCRIPTION
		Ex.	Ja.			
56	RVR-M0391PAZZ	AD	DJ	N	B	Variable resistor (VR-3K) [VR101]
57	RVR-M0392PAZZ	AD	DJ	N	B	Variable resistor (VR-10KJ) [VR161]
58	RVR-M0395PAZZ	AD	DJ	N	B	Variable resistor (VR-150KJ) [VR141]
59	VCEAFU1EM227M	AC	DD	N	C	Capacitor (YXF 220MF/25V) [C53]
60	VCEAFU1HM105M	AC	DD		C	Capacitor (YXF 1MF/50V) [C55]
61	VCEAFU1HM475M	AC	DD	N	C	Capacitor (YXF 4.7MF/50V) [C104,164]
62	VCEAFU1VM336M	AC	DD	N	C	Capacitor (YXF 33MF/35V) [C56-58]
63	VCEAFU1VM476M	AD	DD	N	C	Capacitor (YXF 47MF/35V) [C101]
64	VCEAFV1AM228M	AF	DS	N	C	Capacitor (YXF 2200MF/10V) [C54]
65	VCEAFV1VM108M	AF	DS	N	C	Capacitor (YXF 1000MF/35V) [C51,52]
66	VHD1N4003//--1	AC	DJ	N	B	Diode (1N4003-G23) [D164]
67	VHD1N4005//--1	AC	DJ	N	B	Diode (1N4005-G23) [D5,6]
68	VHD1SS244//--1	AC	DJ	N	B	Diode (1SS244) [D2]
69	VHD1SS270A//--1	AA	DD		B	Diode (1SS270A) [D3,54,101,102,105]
70	VHDD3SBA60//--1	AH	DX		B	Diode (D5SBA60)(100V series) [DB1]
	VHDD3SBA60//--1	AG	DX		B	Diode (D3SBA60)(200V series) [DB1]
71	VHDDSK10C//--1	AB	DJ		B	Diode (DSK10C) [D104]
	VHDERA2206//--1	AD	DJ		B	Diode (ERA22-06)(100V series) [D1]
72	VHDERA2208//--1	AD	DJ		B	Diode (ERA22-08)(100V series) [D122]
	VHDERA2208//--1	AD	DJ		B	Diode (ERA22-08)(200V series) [D1,122]
73	VHDERA9202//--1	AE	DJ	N	B	Diode (ERA92-02) [D52]
74	VHDESJA5210--1	AE	DS	N	B	Diode (ESJA52-10) [D181,182]
75	VHDYG801C04--1	AG	DX	N	B	Diode (YG801C04) [D53]
76	VHDYG901C2//--1	AG	DX		B	Diode (YG901C2) [D51]
	VHERD16ESB1--1	AC	DJ	N	B	Zener diode (RD16ES B1)(100V/110V) [ZD141,142,145,146]
77	VHERD39ESB1--1	AC	DJ	N	B	Zener diode (RD39ESB1(A))(120V/127V/200V series) [ZD141,142,145,146]
78	VHERD20ESB2--1	AC	DJ	N	B	Zener diode (RD20ES B2) [ZD2]
79	VHERD3.0ESB11	AC	DJ	N	B	Zener diode (RD3.0ESAB1) [ZD101]
80	VHERD30ESB1--1	AC	DJ	N	B	Zener diode (RD30ESB1(A)) [ZD53]
	VHERD39ESB1--1	AC	DJ	N	B	Zener diode (RD39ESB1(A))(100V/110V) [ZD1]
81	VHERD16ESB1--1	AC	DJ	N	B	Zener diode (RD16ES B1)(120V/127V/200V series) [ZD1]
82	VHERD4.7ESB11	AC	DJ	N	B	Zener diode (RD4.7ESAB1) [ZD102]
83	VHERD5.1ESB21	AC	DJ	N	B	Zener diode (RD5.1ES B2) [ZD162]
84	VHERD5.6ESB21	AC	DJ	N	B	Zener diode (RD5.6ESAB2) [ZD103]
85	VHERD5.6ESB31	AC	DJ	N	B	Zener diode (RD5.6ES-B3) [ZD161,163]
86	VHERD6.8ESB11	AC	DJ	N	B	Zener diode (RD6.8ESAB1) [ZD121,143]
	VHH4D18/////--1	AK	EB	N	B	Power thermistor (4D18)(100V series) [TH1]
87	VHH8D13/////--1	AK	DS	N	B	Power thermistor (8D13)(200V series) [TH1]
88	VHSTF321S//--1	AG	DX		B	Thyristor (TF321S) [SCR51]
	VHSTM1641P//--F	AT	EZ	N	B	Thyristor (TM1641P-L(L))(100V series) [TRC1]
89	VHSTM1661P//--F	AT	EZ	N	B	Thyristor (TM1661P-L(L))(200V series) [TRC1]
90	VHVC271D10A--1	AD	DJ		B	Varistor (C271D10A)(100V series) [ZR1]
	VHVC471D10A--1	AE	DJ		B	Varistor (C471D10A)(200V series) [ZR1]
91	VRD-ST2CD103J	AA	DD		C	Resistor (ST1/6S-10KJ) [R29,101,105,108,110,121]
	VRD-ST2CD104J	AA	DD		C	Resistor (ST1/6S-100KJ)(100V series) [R18,19,127,128,148,149]
92	VRD-ST2CD224J	AB	DD	N	C	Resistor (ST1/6S-220KJ)(200V series) [R18,19]
	VRD-ST2CD104J	AA	DD		C	Resistor (ST1/6S-100KJ)(200V series) [R127,128,148,149]
93	VRD-ST2CD105J	AA	DD		C	Resistor (ST1/6S-1MJ) [R123,144]
94	VRD-ST2CD122J	AA	DD		C	Resistor (ST1/6S-1.2KJ) [R13]
95	VRD-ST2CD123J	AA	DD		C	Resistor (ST1/6S-12KJ) [R5]
96	VRD-ST2CD153J	AA	DD		C	Resistor (ST1/6S-15KJ) [R7]
97	VRD-ST2CD181J	AA	DD		C	Resistor (ST1/6S-180J) [R109,168]
98	VRD-ST2CD182J	AA	DD		C	Resistor (ST1/6S-1.8KJ) [R24]
99	VRD-ST2CD183J	AA	DD		C	Resistor (ST1/6S-18KJ) [R142,163,104,141]
100	VRD-ST2CD223J	AA	DD		C	Resistor (ST1/6S-22KJ) [R6,27]
	VRD-ST2CD334J	AB	DD	N	C	Resistor (ST1/6S-330KJ)(100V series) [R20]
	VRD-ST2CD274J	AB	DD	N	C	Resistor (ST1/6S-270KJ)(100V series) [R21,145]
101	VRD-ST2CD684J	AB	DD	N	C	Resistor (ST1/6S-680KJ)(100V series) [R143]
	VRD-ST2CD684J	AB	DD	N	C	Resistor (ST1/6S-680KJ)(200V series) [R20,21,143]
	VRD-ST2CD274J	AB	DD	N	C	Resistor (ST1/6S-270KJ)(200V series) [R145]
102	VRD-ST2CD330J	AA	DD		C	Resistor (ST1/6S-33J) [R68]
103	VRD-ST2CD331J	AA	DD		C	Resistor (ST1/6S-330J) [R14]
104	VRD-ST2CD333J	AA	DD		C	Resistor (ST1/6S-33KJ) [R23]
105	VRD-ST2CD394J	AB	DD	N	C	Resistor (ST1/6S-390KJ) [R124]
106	VRD-ST2CD472J	AA	DD		C	Resistor (ST1/6S-4.7KJ) [R58,122,129]
107	VRD-ST2CD473J	AA	DD		C	Resistor (ST1/6S-47KJ) [R22,28]
108	VRD-ST2CD474J	AA	DD		C	Resistor (ST1/6S-470KJ) [R2B]
109	VRD-ST2CD562J	AA	DD		C	Resistor (ST1/6S-5.6KJ) [R111]
110	VRD-ST2CD563J	AB	DD	N	C	Resistor (ST1/6S-56KJ) [R8,106,165]
111	VRD-ST2CD681J	AB	DD	N	C	Resistor (ST1/6S-680J) [R107,166]
112	VRD-ST2CD822J	AA	DD		C	Resistor (ST1/6S-8.2KJ) [R30]
113	VRD-ST2EF105J	AB	DD	N	C	Resistor (ST1/4S-1MJ) [R150-152]
114	VRD-ST2EF155J	AA	DD		C	Resistor (ST1/4S-1.5MJ) [R153-155]
115	VRD-ST2HF104J	AA	DD		C	Resistor (ST1/2S-100KJ) [R2]
116	VS2SA1175H//--1	AC	DJ	N	B	Transistor (2SA1175-HF) [Q121,141,142,101,161]
117	VS2SA1920P//--1	AE	DS	N	B	Transistor (2SA1920P) [Q122,143]
118	VS2SC1213-C1A	AC	DD		B	Transistor (2SC1213C) [Q2]
119	VS2SC2785F//--1	AC	DJ	N	B	Transistor (2SC2785-FF) [Q3,102,162]
	VS2SD1266AP--1	AK	DX	N	B	Transistor (2SD1266A-P)(100V series) [Q103]
120	VS2SD1266AP--1	AK	DX	N	B	Transistor (2SD1266A-P)(200V series) [Q103,163]

### 30 DC power supply PWB

NO.	PARTS CODE	PRICE RANK		NEW MARK	PART RANK	DESCRIPTION	
		Ex.	Ja.				
121	VS2SK2081//1A	AR	EQ	N	B	Transistor (2SK2081)(100V series)	[Q1]
	VS2SK1944//1	AS	EZ	N	B	Transistor (2SK1944)(200V series)	[Q1]
122	QFS-A2700QCZZ	AD	DJ		A	Fuse (125V/20A)(100V/110V)	[F1,2]
	QFS-B0030FCZZ	AH	DS		A	Fuse (250V/15A)(120V/127V)	[F1]
	QFS-C1500QCZZ	AF	DS		A	Fuse (240V/10A)(200V series)	[F1]
123	QFS-A0052PAZZ	AE	DJ	N	A	Fuse (125V/5A)(100V/110V)	[F3]
	QFS-F0030PAZZ	AE	DJ	N	A	Fuse (125V/5A)(120V/127V)	[F3]
	QFS-C0056PAZZ	AE	DS	N	A	Fuse (250V/3.15A)(200V series)	[F3]

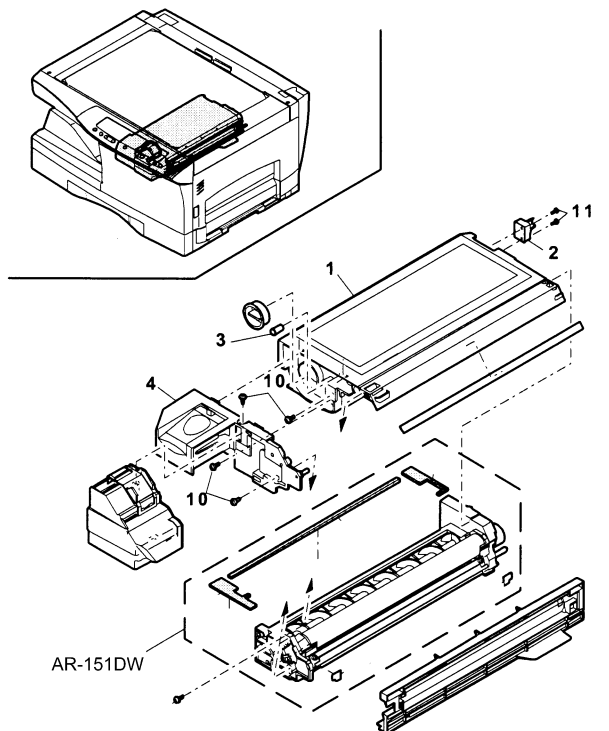
NO.	PARTS CODE	PRICE RANK	NEW MARK	PART RANK	DESCRIPTION
	(Unit)				
901	CPWBF0017QS32	BU		E	DC power supply PWB (120V/127V)(Saudi Arabia,Brazil,LAG2)
	CPWBF0017QS37	BU		E	DC power supply PWB (200V series)(Other countries)

### 31 DV cartridge unit

NO.	PARTS CODE	PRICE RANK	NEW MARK	PART RANK	DESCRIPTION
1	CB0X-0007JS54	AX		E	Toner box unit (L2,L4)
	CB0X-0007YS53	BL		E	Toner box unit (Russia,Lebanon,Iran,South Africa,Saudi Arabia,LAG4,Pakistan,LAG2)
	CB0X-0007YS51	BL		E	Toner box unit (Indonesia,Thailand,LAG3,Singapore,Malaysia,,Hong kong,Brazil,Philippines)

NO.	PARTS CODE	PRICE RANK	NEW MARK	PART RANK	DESCRIPTION
3	PCAPH0003QSZZ	AC		C	Toner cap
4	CC0VP0004JS51	AK	N	E	DVF cover unit

### 31 DV cartridge unit



FCP04045

# SHARP

**COPYRIGHT © 1999 BY SHARP CORPORATION**

All rights reserved.

Printed in Japan.

No part of this publication may be reproduced,  
stored in a retrieval system, or transmitted,  
in any form or by any means,  
electronic, mechanical, photocopying, recording, or otherwise,  
without prior written permission of the publisher.

**SHARP CORPORATION**  
**Digital Document Systems Group**  
**Quality & Reliability Control Center**  
**Yamatokoriyama, Nara 639-1186, Japan**

1999 December Printed in Japan (N)