

## 5. PARTS LIST SECTION

TITLE	PAGE	TITLE	PAGE
<u>INTRODUCTION</u> .....	5-2	<u>COMMON HARDWARE</u> .....	5-20
<u>PARTS LIST</u>		<u>PART NUMBER INDEX</u> .....	5-21
<b>OPTICS PLATEN COVER</b>			
PL 1.1 PLATEN COVER AND COMPONENTS .....	5-4		
<b>COVERS</b>			
PL 2.1 MAIN COVER .....	5-5		
<b>TRANSPORTS</b>			
PL 3.1 PAPER TRANSPORT DOOR .....	5-6		
<b>OPTICS</b>			
PL 4.1 OPTICS ASSEMBLY .....	5-7		
<b>DRIVES</b>			
PL 5.1 MAIN DRIVES .....	5-8		
PL 5.2 MAIN DRIVE ASSEMBLY (PART 1 OF 2) ..	5-9		
PL 5.3 MAIN DRIVE ASSEMBLY (PART 2 OF 2) ..	5-10		
<b>ELECTRICAL COMPONENTS</b>			
PL 6.1 ELECTRICAL COMPONENTS .....	5-11		
<b>XEROGRAPHICS</b>			
PL 7.1 COPY CARTRIDGE .....	5-12		
<b>PAPER FEED</b>			
PL 8.1 PAPER FEED .....	5-13		
<b>PAPER TRANSPORT</b>			
PL 9.1 PAPER TRANSPORT (PART 1 OF 4) .....	5-14		
PL 9.2 PAPER TRANSPORT (PART 2 OF 4) .....	5-15		
PL 9.3 PAPER TRANSPORT (PART 3 OF 4) .....	5-16		
PL 9.4 PAPER TRANSPORT (PART 4 OF 4) .....	5-17		
PL 9.5 MULTIFEED ASSEMBLY (PART 1 OF 2)(5203/5305/5306/XC355/XC356) .....	5-18		
PL 9.6 MULTIFEED ASSEMBLY (PART 2 OF 2)(5203/5305/5306/XC355/XC356) .....	5-19		

## OVERVIEW

The Parts List section identifies all part numbers and the corresponding location of all spared subsystem components.

## ORGANIZATION

### PARTS LISTS

Each item number in the part number listing corresponds to an item number in the related illustration. All the parts in a given subsystem of the machine will be located in the same illustration or in a series of associated illustrations.

### ELECTRICAL CONNECTORS AND FASTENERS

This section contains the illustrations and descriptions of the plugs, jacks, and fasteners used in the machine. A part number listing of the connectors is included.

### COMMON HARDWARE

The common hardware is listed in alphabetical order by the letter or letters used to identify each item in the part number listing and in the illustrations. Dimensions are in millimeters unless otherwise identified.

### PART NUMBER INDEX

This index lists all the spared parts in the machine in numerical order. Each number is followed by a reference to the parts list on which the part may be found.

## OTHER INFORMATION

### ABBREVIATIONS

Abbreviations are used in the parts lists and the exploded view illustrations to provide information in a limited amount of space. The following abbreviations are used in this manual:

<b>A</b>	Amp
<b>DH</b>	Document Handler
<b>EMI</b>	Electro Magnetic Induction
<b>HZ</b>	Hertz
<b>MNL</b>	Multinational
<b>NOHAD</b>	Noise Ozone Heat Air Dirt
<b>P/O</b>	Part Of
<b>PWB</b>	Printed Wiring Board
<b>REF</b>	Reference
<b>R/E</b>	Reduction/Enlargement
<b>XL</b>	Xerox Limited
<b>USMG</b>	United States Marketing Group
<b>USO</b>	United States Operations
<b>V</b>	Volt
<b>W/</b>	With
<b>W/O</b>	Without
<b>XCL</b>	Xerox Canada Limited
<b>AO</b>	America's Operations

### SYMBOLGY

Symbolgy used in the Parts List section is identified in the Symbolgy section.

## SUBSYSTEM INFORMATION

### USE OF THE TERM "ASSEMBLY"

The term "assembly" will be used for items in the part number listing that include other itemized parts in the part number listing. When the word "assembly" is found in the part number listing, there will be a corresponding item number on the illustrations followed by a bracket and a listing of the contents of the assembly.

### BRACKETS

A bracket is used when an assembly or kit is spared, but is not shown in the illustration. The item number of the assembly or kit precedes the bracket; the item numbers of the piece parts follow the bracket.

### Tag

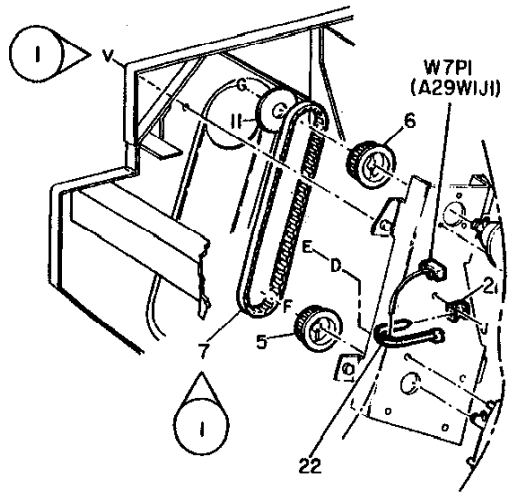
The notation "W/Tag" in the parts description indicates that the part configuration has been updated. Check the change Tag index in the General Information section of the Service Data for the name and purpose of the modification.

In some cases, a part or assembly may be spared in two versions: with the Tag and without the Tag. In those cases, use whichever part is appropriate for the configuration of the machine on which the part is to be installed. If the machine does not have a particular Tag and the only replacement part available is listed as "W/Tag," install the Tag kit or all of the piece parts. The Change Tag Index tells you which kit or piece parts you need.

Whenever you install a Tag kit or all the piece parts that make up a Tag, mark the appropriate number on the Tag matrix.

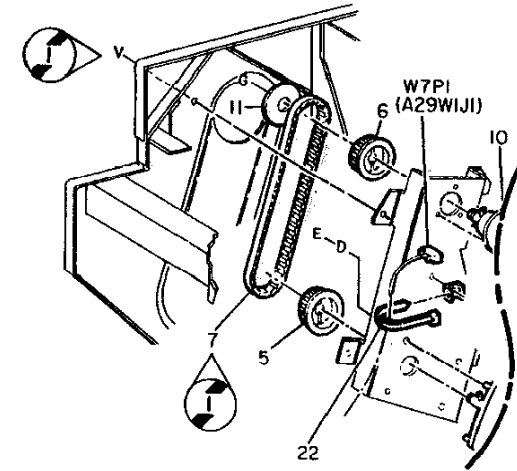
## SYMBOLGY

A tag number within a circle and pointing to an item number shows that the part has been changed by the tag number within the circle (Figure 1). Information on the modification is in the Change Tag Index.



0	Z004	A
850	PL	M I

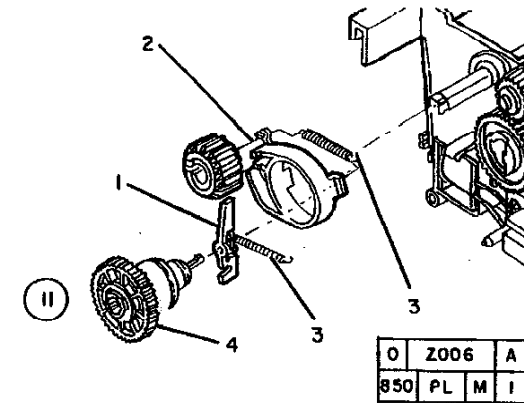
Figure 1. With Tag Symbol



0	Z005	A
850	PL	M I

Figure 2. Without Tag Symbol

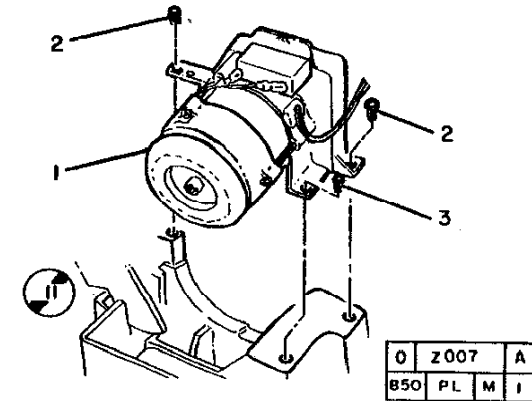
A tag number within a circle with no apex shows that the entire drawing has been changed by the tag number within the circle (Figure 3). Information on the modification is in the Change Tag Index.



0	Z006	A
850	PL	M I

Figure 3. Entire Drawing With Tag Symbol

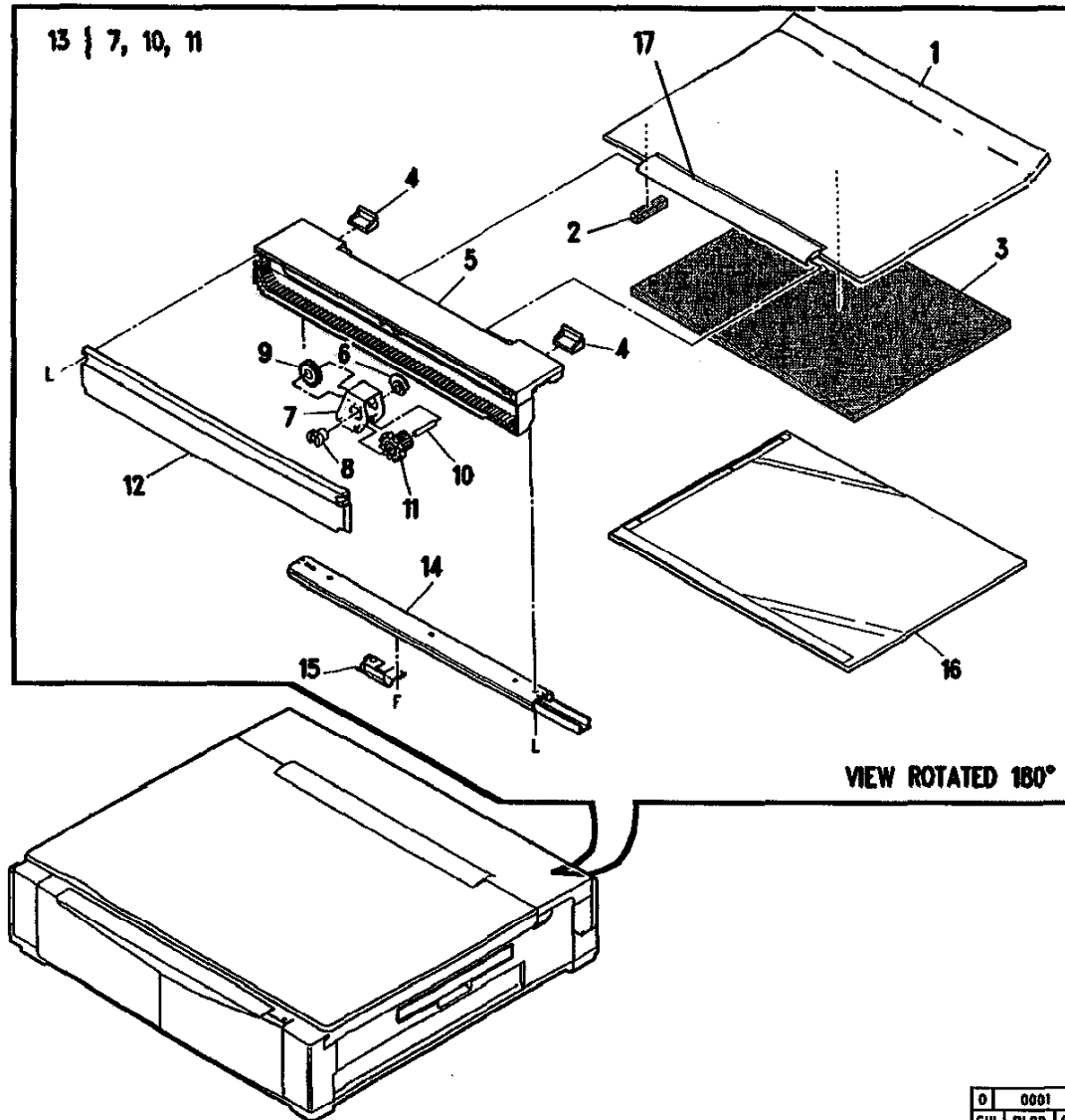
A tag number within a circle with no apex and having a shaded bar shows that the entire drawing was changed by the tag number within the circle (Figure 4).



0	Z007	A
850	PL	M I

Figure 4. Entire Drawing Without Tag Symbol

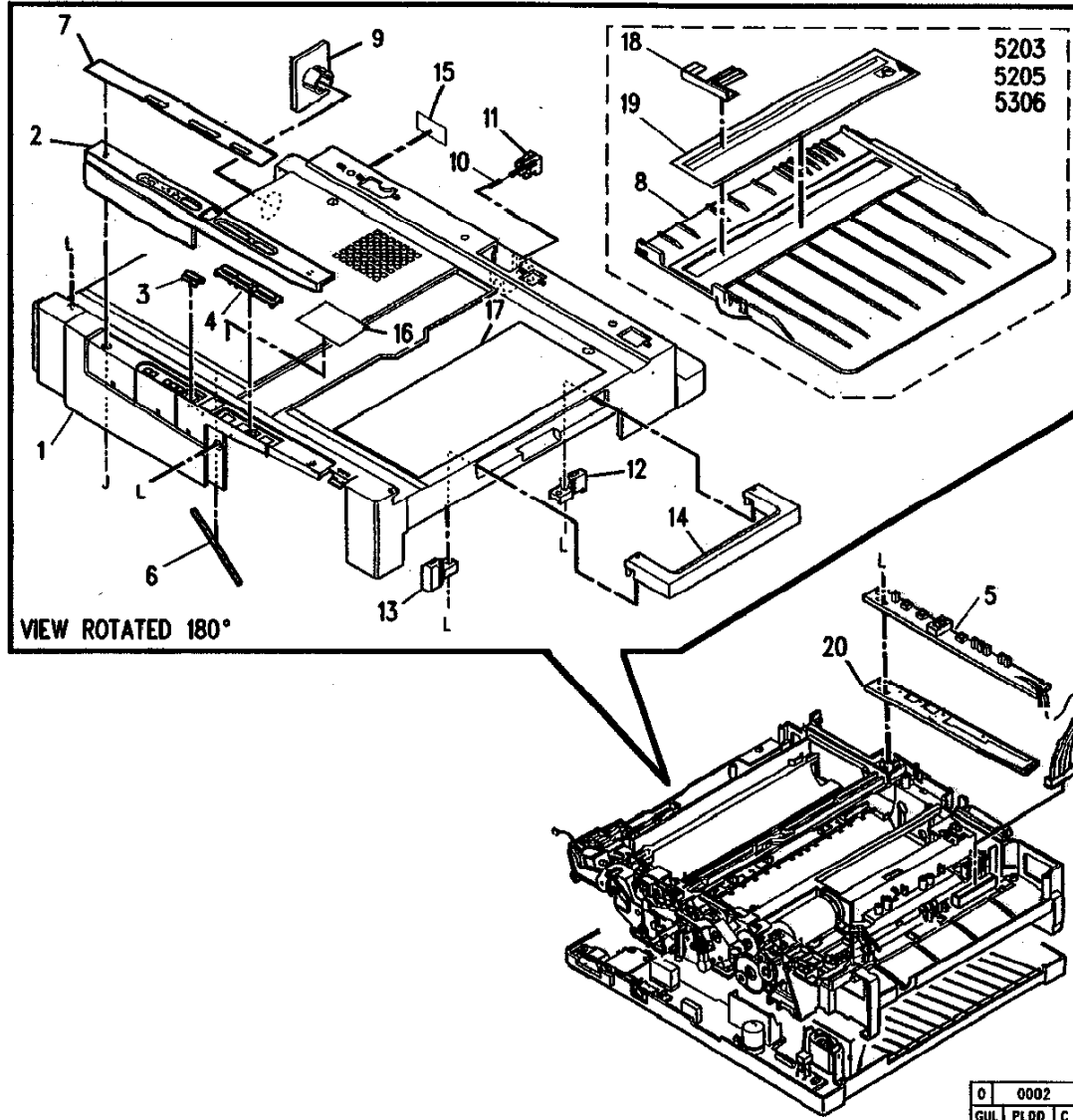
PL 1.1 PLATEN COVER AND COMPONENTS



ITEM	PART	DESCRIPTION
1	48E19970	PLATEN COVER (5201/5203/5305)
-	48E4560	PLATEN COVER (5306)
-	48E57840	(XC356)
-	48E57850	(XC351/355)
2	121E9861	MAGNET
3	4E6211	PLATEN CUSHION (5201/5203/5305/ XC351/XC355)
-	4E6291	PLATEN CUSHION (5306/XC356)
4	14E27000	RACK SPACER
5	7E29200	ENDLESS RACK (5201/5203/5305/ XC351/XC355)
-	7E30030	ENDLESS RACK (5306/XC356)
6	8E4840	SCAN SENSOR ACTUATOR CAM
7	--	GEAR RACK BRACKET (P/O ITEM 13)
8	16E9570	BUSHING
9	7E29220	GEAR (22B)
10	6E42660	SHAFT (14, 14)
11	7E29290	GEAR (14, 14)
12	48E3310	GEAR RACK COVER (5201/5203/5305/ XC351/XC355)
-	48E4570	GEAR RACK COVER (5306/XC356)
13	49E12660	BRACKET ASSEMBLY
14	10E3520	SLIDER (5201/5203/5305/ XC351/XC355)
-	10E3570	SLIDER (5306/XC356)
15	19E25450	FRICITION PAD
16	90K2060	PLATEN GLASS (5201/5203/5305/ XC351/XC355)
-	90K2070	PLATEN GLASS (5306/XC356)
17	3E34350	PLATEN COVER HINGE (11 INCH)
-	3E34360	PLATEN COVER HINGE (14 INCH)

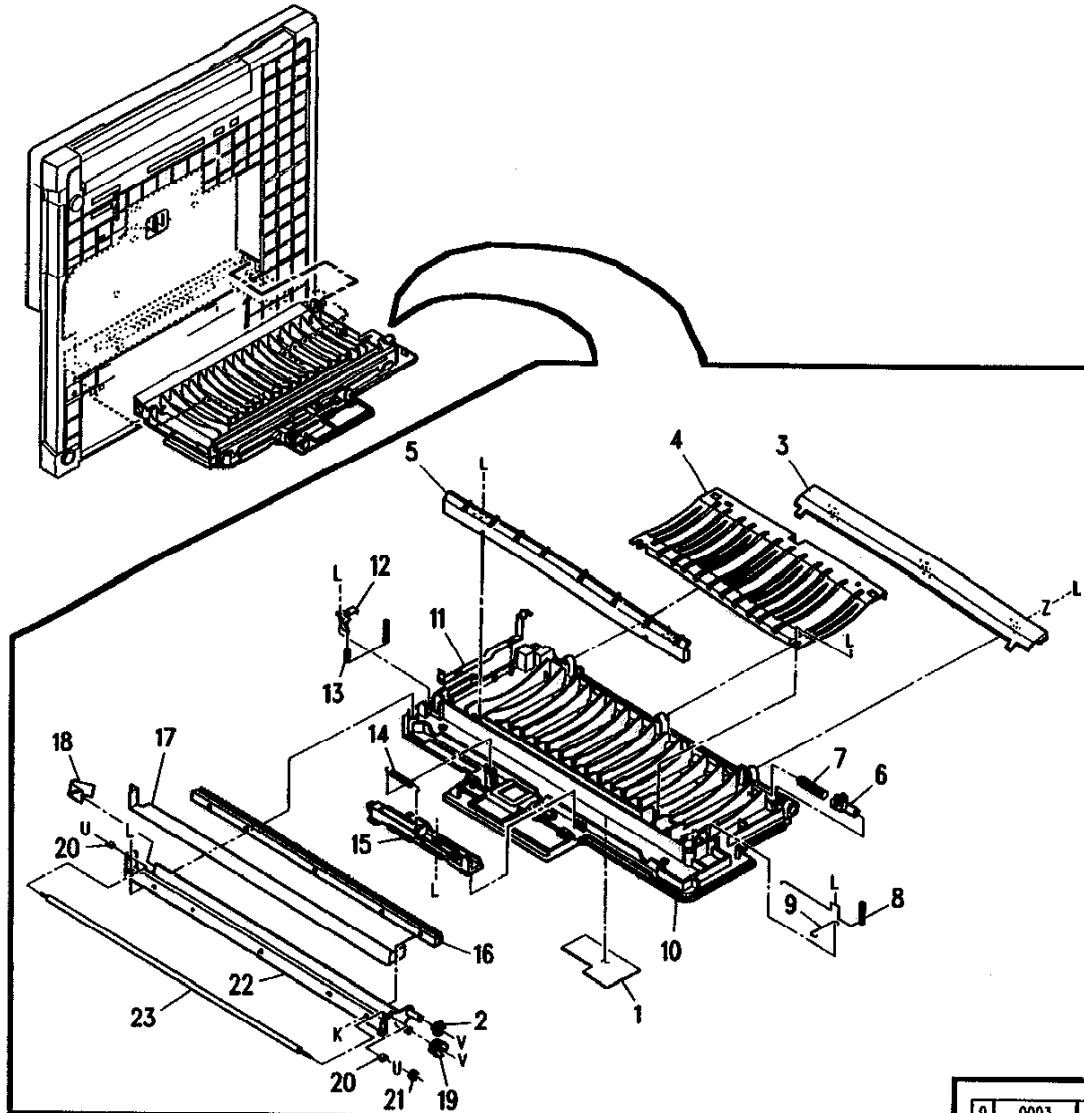
0	0001	B
GUL	PL00	C 2

PL 2.1 MAIN COVER



ITEM	PART	DESCRIPTION
1	48E3270	TOP COVER (5201)
-	48E7630	(5203/5305)
-	48E57860	(XC355/356)
-	48E59110	(XC351)
2	48E3340	CONTROL CONSOLE PANEL (5201)
-	48E7650	(5203/5305/5306)
-	48E57830	(XC355/356)
-	48E59100	(XC351)
3	3E26940	STOP BUTTON (5201)
-	3E27120	(5203/5305/5306)
-	3E44620	(XC351/355/356)
4	3E30510	START BUTTON (5203)
-	3E27130	(5305/5306)
-	3E44630	(XC355/356)
5	160K311	CONTROL CONSOLE PWB (5201)
-	160K4841	(5203)
-	160K1891	(5305/5306)
-	160K44970	(XC355/356)
-	160K48890	(XC351)
6	4E6190	SEALING CUSHION
7	96P10015	CONSOLE LABEL (5203)
-	891E35720	(XC351)
-	891E35730	(XC355)
-	891E37280	(XC356)
-	96P10011	(5201)
-	96P10019	(5305)
-	96P10020	(5306)
8	50E14320	PAPER TRAY
9	48E3350	SEAL COVER
10	9E57120	STOP BUTTON SPRING
11	3E26930	STOP BUTTON
12	19E25500	HANDLE RIGHT HOLDER
13	19E25540	HANDLE LEFT HOLDER
14	3E26900	HANDLE (5201/5203/5305/ XC351/XC355)
-	3E27320	HANDLE (5306/XC356)
15	891E48380	CAUTION LABEL
16	891E48390	LABEL
17	891E37300	OP LABEL (XC351)(XL)
-	891E37290	(XC355/356)(XL)
-	891E35750	(XC355/356)(USO/XCL/AO)
-	96P10008	(5201)
18	38E19040	PAPER GUIDE(5203/5305/ 5306/XC355/356)
19	38E13490	PAPER GUIDE (5203/5305)
-	38E13780	PAPER GUIDE (5306)
-	891E35740	(XC355/356)
20	--	PWB SPACER

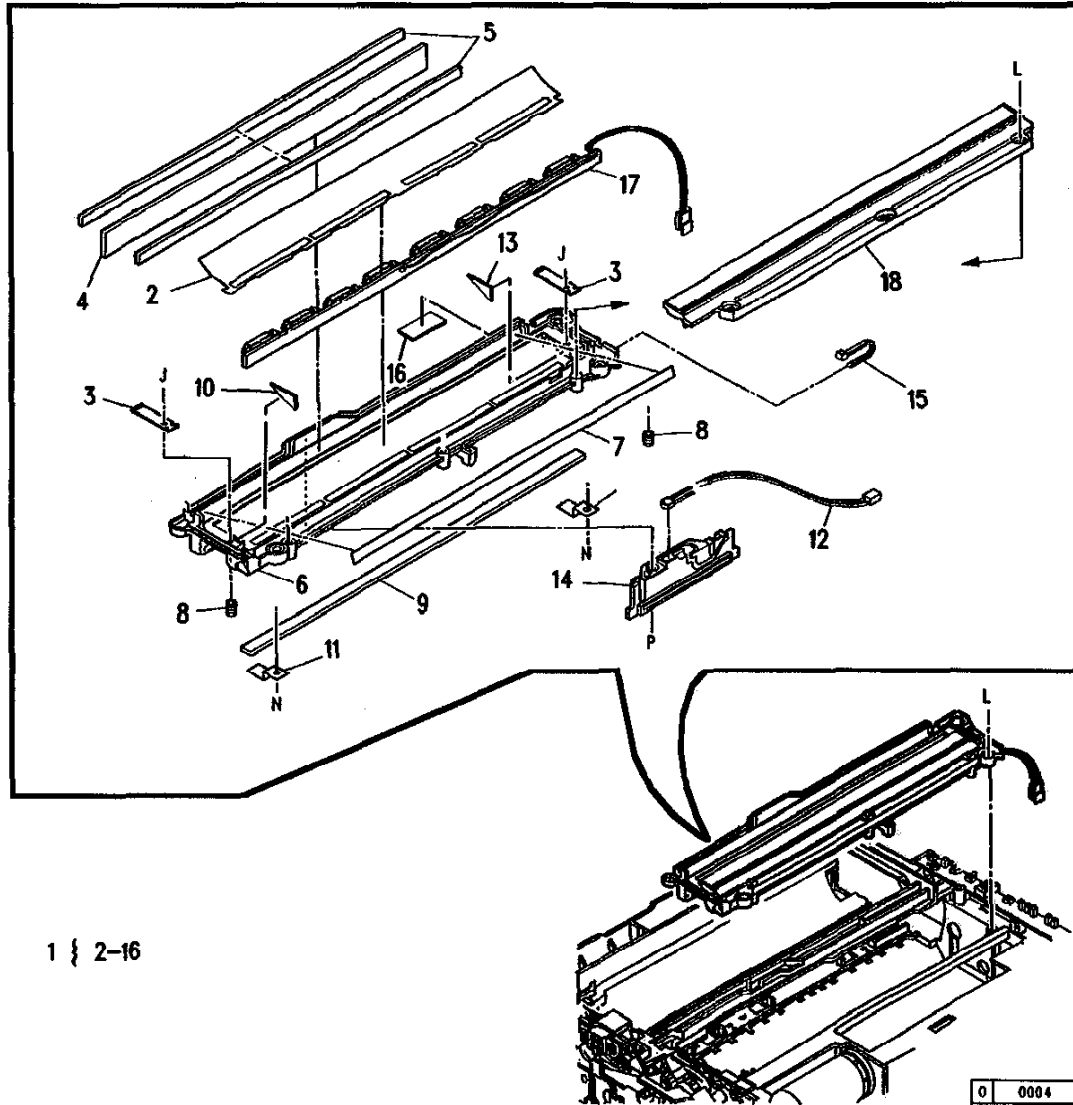
PL 3.1 PAPER TRANSPORT DOOR



ITEM	PART	DESCRIPTION
1	96P10009	LABEL
2	7E29320	DOOR GEAR (14T)
3	38E13390	FRONT FUSER GUIDE
4	15E40320	PLATE
5	19E25511	DETACK COROTRON
6	29E19130	BOTTOM DOOR PIN
7	3E26910	HINGE
8	9E57080	SPRING
9	117E13340	WIRE
10	48E3320	PAPER TRANSPORT DOOR
11	15E40340	DISCHARGE CONTACT PLATE
12	15E40290	TRANSFER CONTACT PLATE
13	9E57140	TRANSFER SPRING
14	9E57150	SLIDER SPRING
15	10E3530	SLIDER
16	19E25521	TRANSFER COROTRON
17	38E13341	TRANSFER HOLDER
18	38E13370	COROTRON CONTACT
19	7E29310	DOOR GEAR
20	13E9560	SUB ROLLER BEARING
21	7E29230	ROLLER GEAR (14T)
22	48E3280	TRANSFER COROTRON CASE
23	22E15180	TRANSPORT ROLLER

0	0003	A
GUL	PL00	C 0

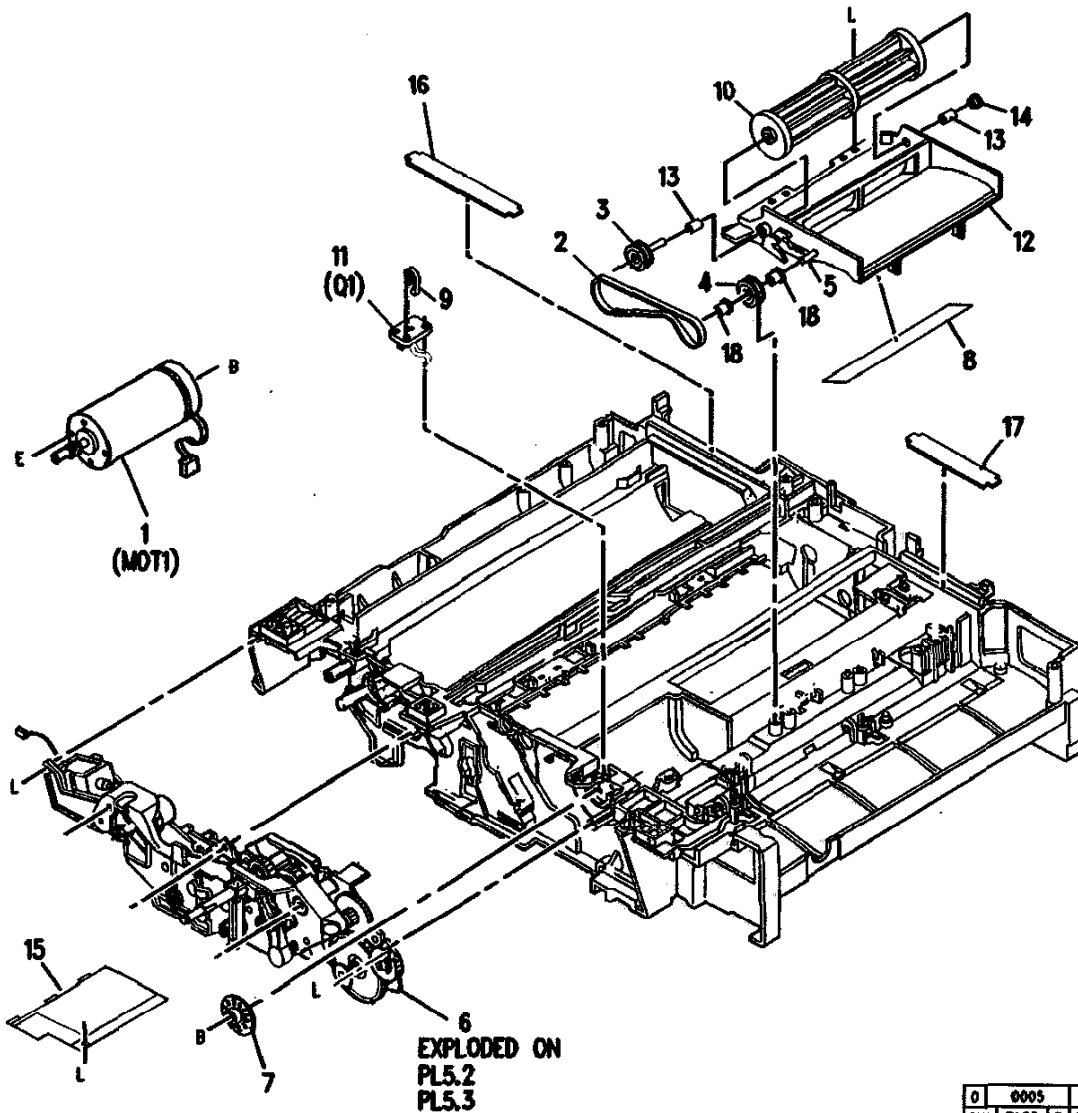
PL 4.1 OPTICS ASSEMBLY



1 { 2-16

ITEM	PART	DESCRIPTION
1	19E25470	OPTICS FRAME ASSEMBLY (120V)
-	19E27580	OPTICS FRAME ASSEMBLY (220V/240V)
2	--	REFLECTIVE SHEET 3 (P/O ITEM 1)
3	--	SPRING PLATE (P/O ITEM 1)
4	62E7050	SELFOC LENS
5	4E6200	SEALING CUSHION
6	--	OPTICAL HOLDER (P/O ITEM 1)
7	--	REFLECTIVE SHEET 2 (P/O ITEM 1)
8	26E39050	SCREW (M3 X 3)
9	62E7060	COLOR FILTER
10	--	REFLECTIVE SHEET (REAR) (P/O ITEM 1)
11	15E40350	FILTER PLATE
12	162K1400	AE SENSOR
13	--	CUSHION (P/O ITEM 1)
14	19E25480	HOLDER (AE)
15	--	CABLE TIE
16	--	REFLECTIVE SHEET (FR) (P/O ITEM 1)
17	160K330	EXPOSURE LAMP PWB (120V)
-	160K1900	EXPOSURE LAMP PWB (220V/240V)
18	19E25490	SIDE REFLECTOR HOLDER (120V)
-	19E27590	SIDE REFLECTOR HOLDER (220V/240V)

PL 5.1 MAIN DRIVES

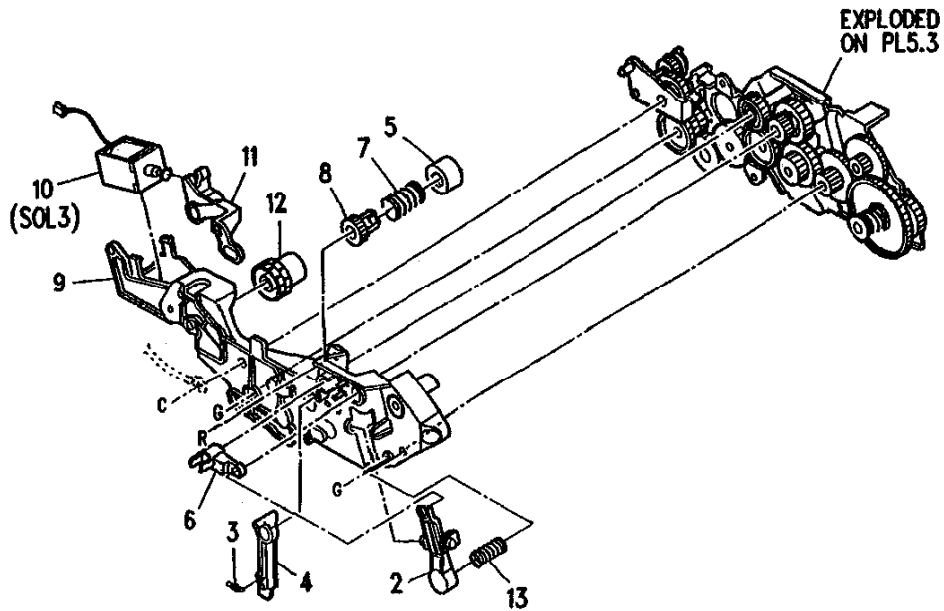


ITEM	PART	DESCRIPTION
1	127E9000	MAIN MOTOR (MOT1)
2	23E11380	COOLING FAN BELT
3	20E20600	COOLING FAN PULLEY
4	20E20520	IDLE PULLEY
5	6E42611	IDLE SHAFT
6	5K3461	MAIN DRIVE ASSEMBLY
7	20E20510	WHEEL ENCODER
8	48E3210	COOLING FAN CASE COVER
9	--	CABLE TIE
10	127E8991	COOLING FAN
11	160K340	MAIN MOTOR ENCODER SENSOR (Q1)
12	48E3260	COOLING FAN CASE
13	13E9580	FAN BEARING
14	16E9560	RUBBER BUSHING
15	48E3250	COVER (5201/XC351)
16	--	SLIDE SHEET 2
17	--	SLIDE SHEET 1
18	13E10580	BEARING

Q	0005	B
QU	PL00	C 00



PL 5.2 MAIN DRIVE ASSEMBLY (PART 1 OF 2)

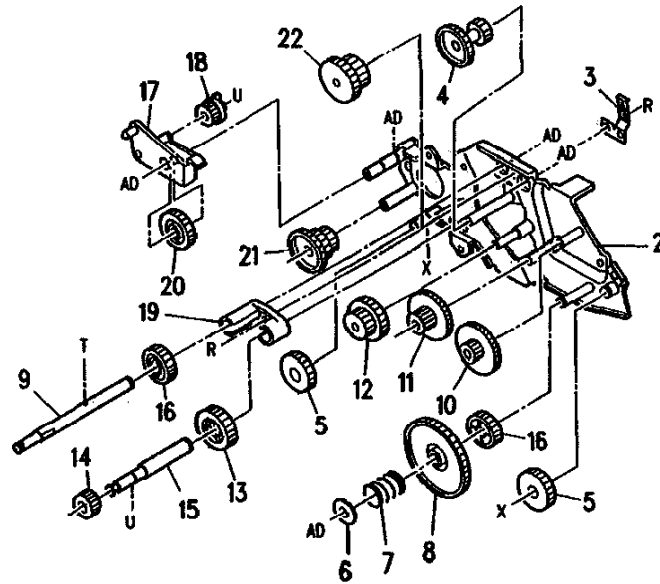


ITEM	PART	DESCRIPTION
1	--	PART OF MAIN DRIVE ASSEMBLY (REFER TO PL5.1, ITEM 6)
2	31E6860	ARM
3	9E57130	SCAN SENSOR ACTUATOR SPRING
4	120E8260	SCAN SENSOR ACTUATOR
5	5E9470	ROLLER GEAR COUPLER
6	16E9550	ROLLER GEAR COUPLER
7	9E57101	ROLLER SPRING
8	7E29100	GEAR (18A)
9	48E3230	GEAR COVER
10	121E9881	TONER DISPENSE SOLENOID (SOL3)
11	31E6850	CONNECTOR ARM
12	7E29110	GEAR (18B)
13	9E57170	ARM SPRING

0	0006	A
GUL	PL00	C 02

PL 5.3 MAIN DRIVE ASSEMBLY (PART 2 OF 2)

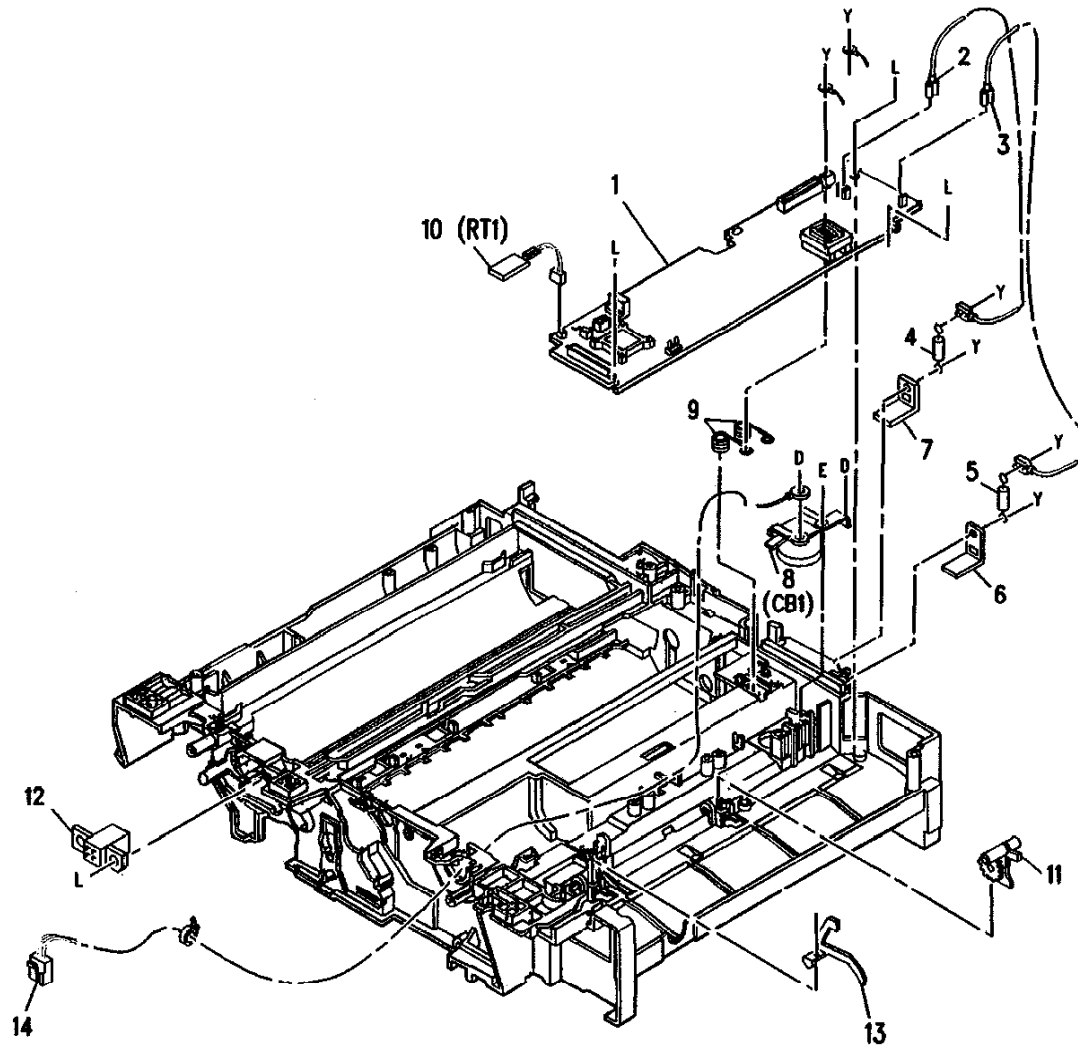
1 } 2-22



ITEM	PART	DESCRIPTION
1	--	PART OF MAIN DRIVE ASSEMBLY (REFER TO PL5.1, ITEM 6)
2	15E40300	GEAR PLATE
3	15E40330	DRIVE GUIDE PLATE
4	7E29160	GEAR (16, 32)
5	7E29270	GEAR (27B)
6	--	WASHER (P/O ITEM 1)
7	9E57050	SPRING (18A)
8	7E29280	GEAR (64)
9	6E42640	SHAFT (22B, 24)
10	7E29210	GEAR (15, 68)
11	7E29170	GEAR (20, 48)
12	7E29140	GEAR (20, 20)
13	7E29250	GEAR (27A)
14	7E29130	GEAR (27)
15	6E42650	SHAFT (17, 27A)
16	7E29190	GEAR (24)
17	49E12650	SWING BRACKET
18	7E29090	GEAR (2, 18)
19	16E9580	BUSHING
20	7E29260	GEAR (27C)
21	7E29120	GEAR (18, 22, 24)
22	7E29180	GEAR (24, 34)

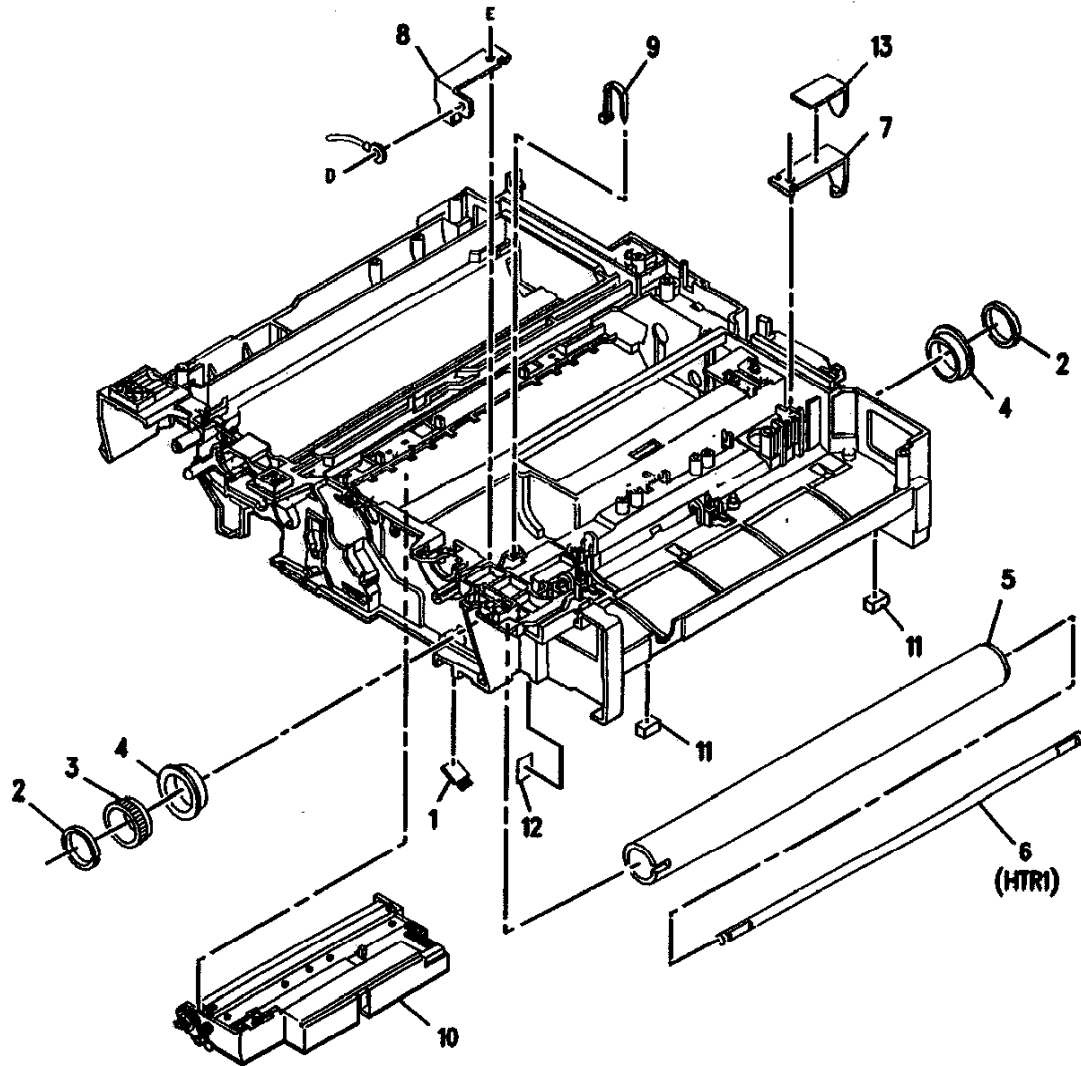
Q	0007	A
GUL	PL00	C 1

PL 6.1 ELECTRICAL COMPONENTS



0	0008	A
GUL	PL00	C 01

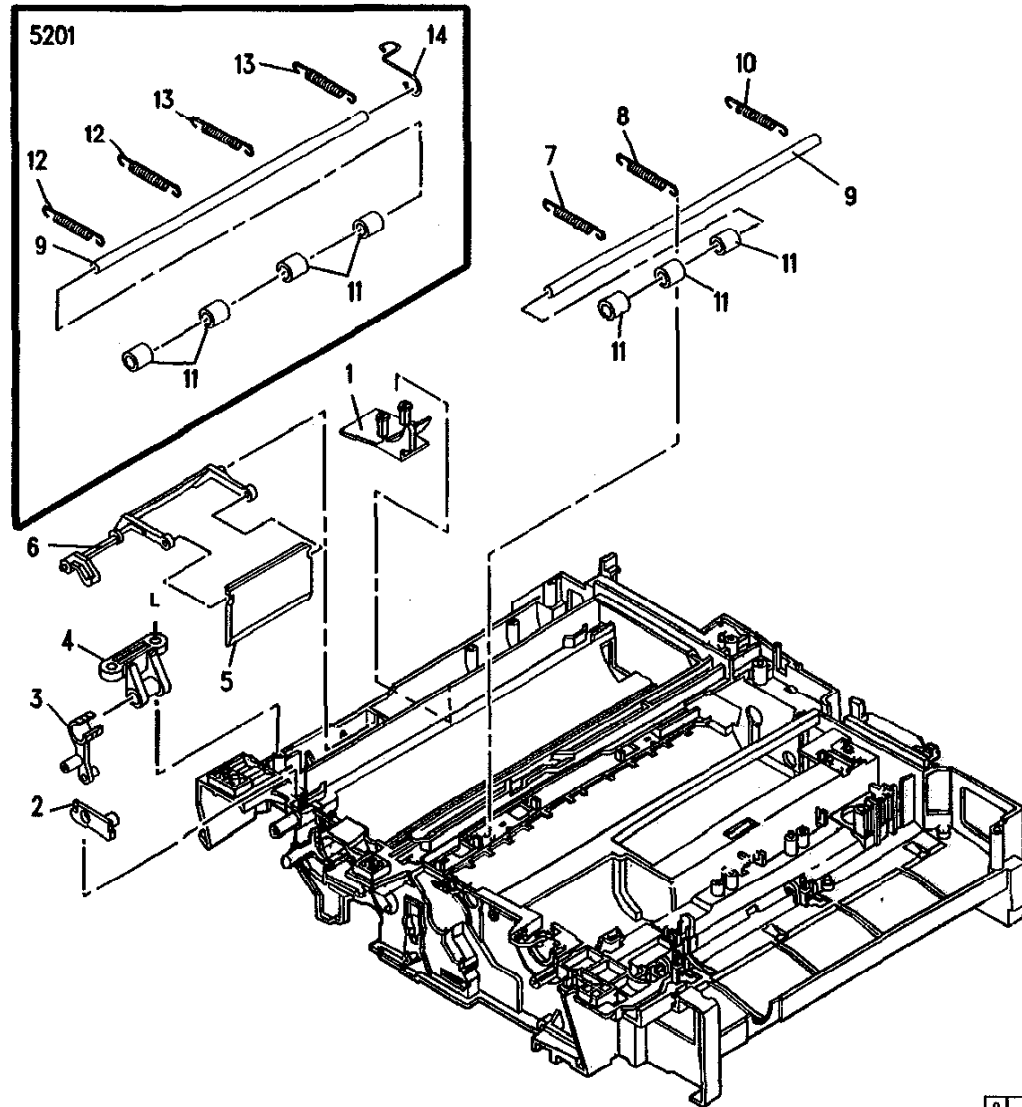
PL 7.1 COPY CARTRIDGE



ITEM	PART	DESCRIPTION
1	115E3960	DISCHARGE BRUSH
2	28E10140	HEAT ROLL SNAP RING
3	7E29300	FUSER GEAR (40T)
4	13E9570	FUSER BEARING
5	22E15200	HEAT ROLL
6	122E1730	HEAT ROD (HRT1)(120V)
-	122E1870	HEAT ROD (HRT1)(240V)
-	122E2360	HEAT ROD (HRT1) (XL)(XC351/355/356)
-	122E1830	HEAT ROD (HRT1)(220V)
7	116E6460	FRONT TERMINAL (HL)
8	116E6440	REAR TERMINAL (HL)
9	--	CABLE TIE
10	--	COPY CARTRIDGE
11	--	CUSHION (CRU)
12	--	CAUTION LABEL
13	118E11120	INSULATOR

0	0000	0
GUL	PL	C 00

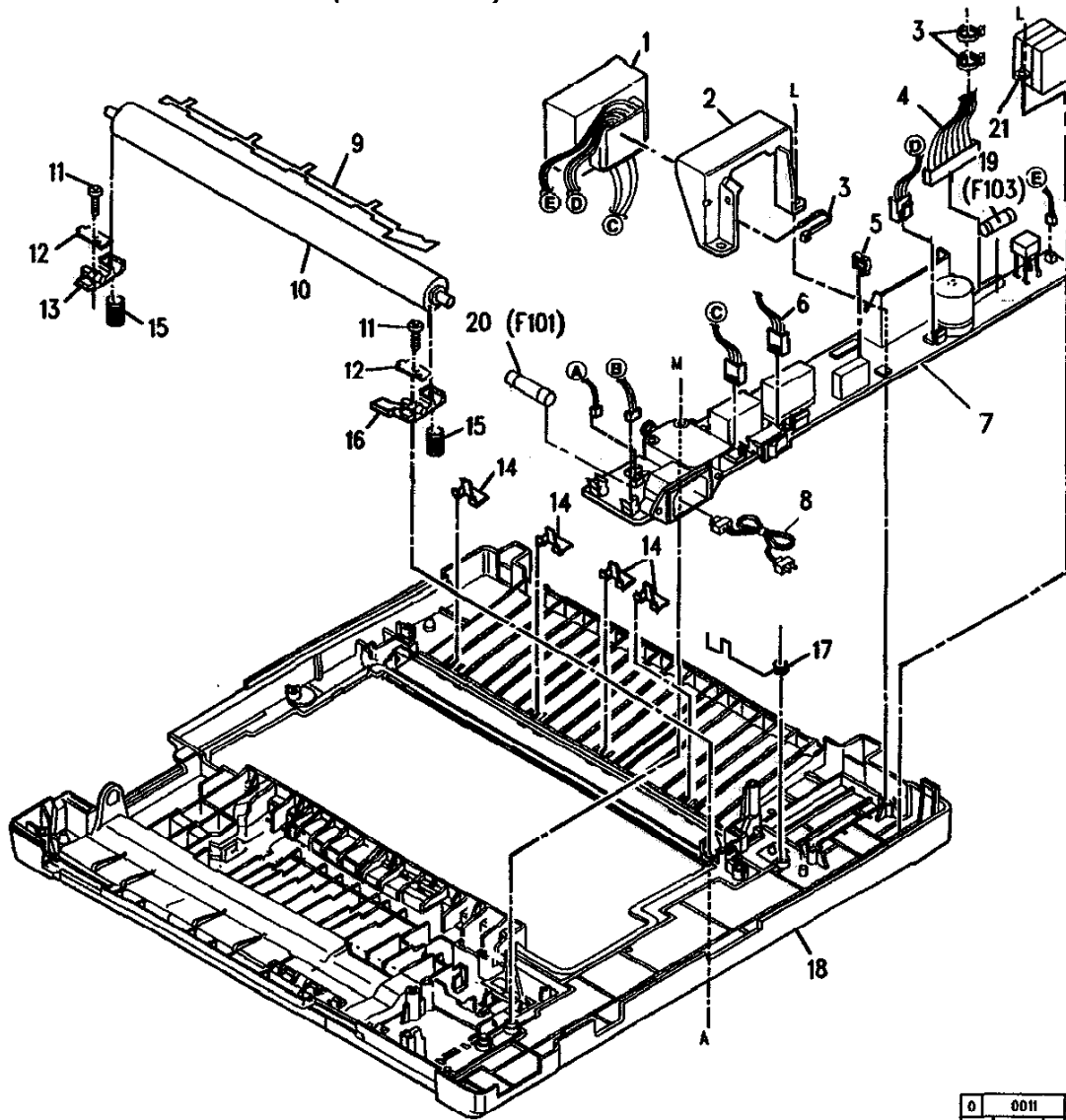
PL 8.1 PAPER FEED



ITEM	PART	DESCRIPTION
1	38E19360	PAPER GUIDE (5201/XC351)
2	29E19120	GUIDE PIN (DV)
3	31E6920	ARM (A)(5203/5305/5306/ XC355/XC356)
4	31E6900	HINGE ARM (5203/5305/5306/ XC355/XC356)
5	3E27140	GATE (5203/5305/5306/ XC355/XC356)
6	31E6890	ARM (B)(5203/5305/5306/ XC355/XC356)
7	9E57520	SPRING (REAR) (5203/5305/5306/ XC355/XC356)
8	9E57500	SPRING (CENTER) (5203/5305/5306/ XC355/XC356)
9	6E42631	UPPER SHAFT
10	9E57510	SPRING (FRONT) (5203/5305/5306/ XC355/XC356)
11	22E15220	UPPER ROLLER
12	9E57090	SPRING (REAR) (5201/XC351)
13	9E57030	FRONT SPRING (5201/XC351)
14	--	SPRING

0	0010	A
GUL	PL0P	C 03

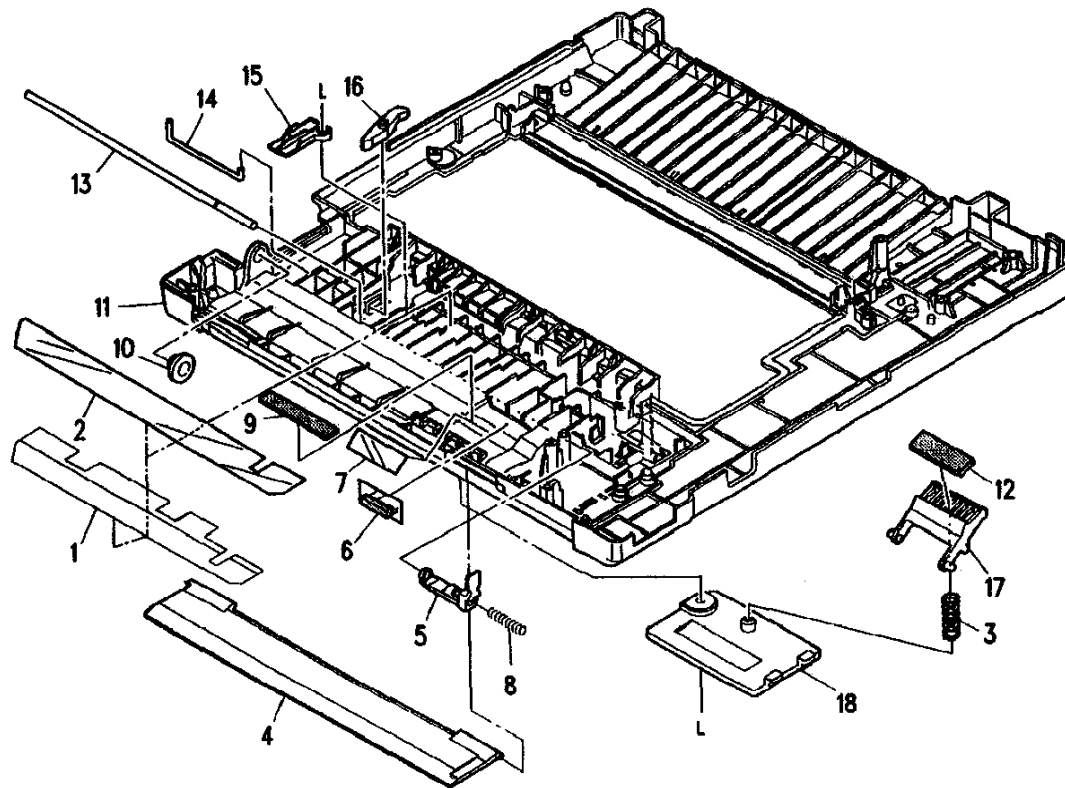
PL 9.1 PAPER TRANSPORT (PART 1 OF 4)



ITEM	PART	DESCRIPTION
1	105E4310	TRANSFORMER (TR1) (120V)
-	105E4401	TRANSFORMER (TR1) (220V/230V)
-	105E4461	TRANSFORMER (TR1) (240V)
2	19E25530	TRANSFORMER HOLDER
3	--	CABLE TIE
4	162K1340	HARNESS (PS)
5	--	WIRE HOLDER
6	162K1390	HARNESS (CL2)
7	160K350	LVPS (USO)(5201)
-	160K1881	LVPS (XL)(5201/XC351)
-	160K4470	LVPS (5305) (USO/XCL/AO)
-	160K4480	LVPS (USO/XCL/AO) (5203/5306/XC355/XC356)
-	160K1871	LVPS (XL) (5203/5305/XC355/XC356)
8	--	POWER CORD (120V)
9	--	GROUND PLATE
10	22E15190	PRESSURE ROLL
11	26E37970	SCREW
12	19E25460	PR LEVER CLAMP
13	11E5311	PRESSURE ARM FRONT LEVER
14	33E3031	STRIPPER FINGER
15	9E57110	PRESSURE SPRING
16	11E5321	PRESSURE ARM REAR LEVER
17	117E13351	GROUNDING SPRING
18	48E3290	BASE FRAME (5201/XC351)
-	48E7640	BASE FRAME (5203/5306/XC355/XC356)(5305)
19	--	FUSE (F103)(2A)
20	108E2200	FUSE (F101)(6.3A)(XL)
-	108E2980	FUSE (F101)(10A)(USO)
21	--	CAPACITOR (XL)

0	0011	A
GUL	PL00	C 02

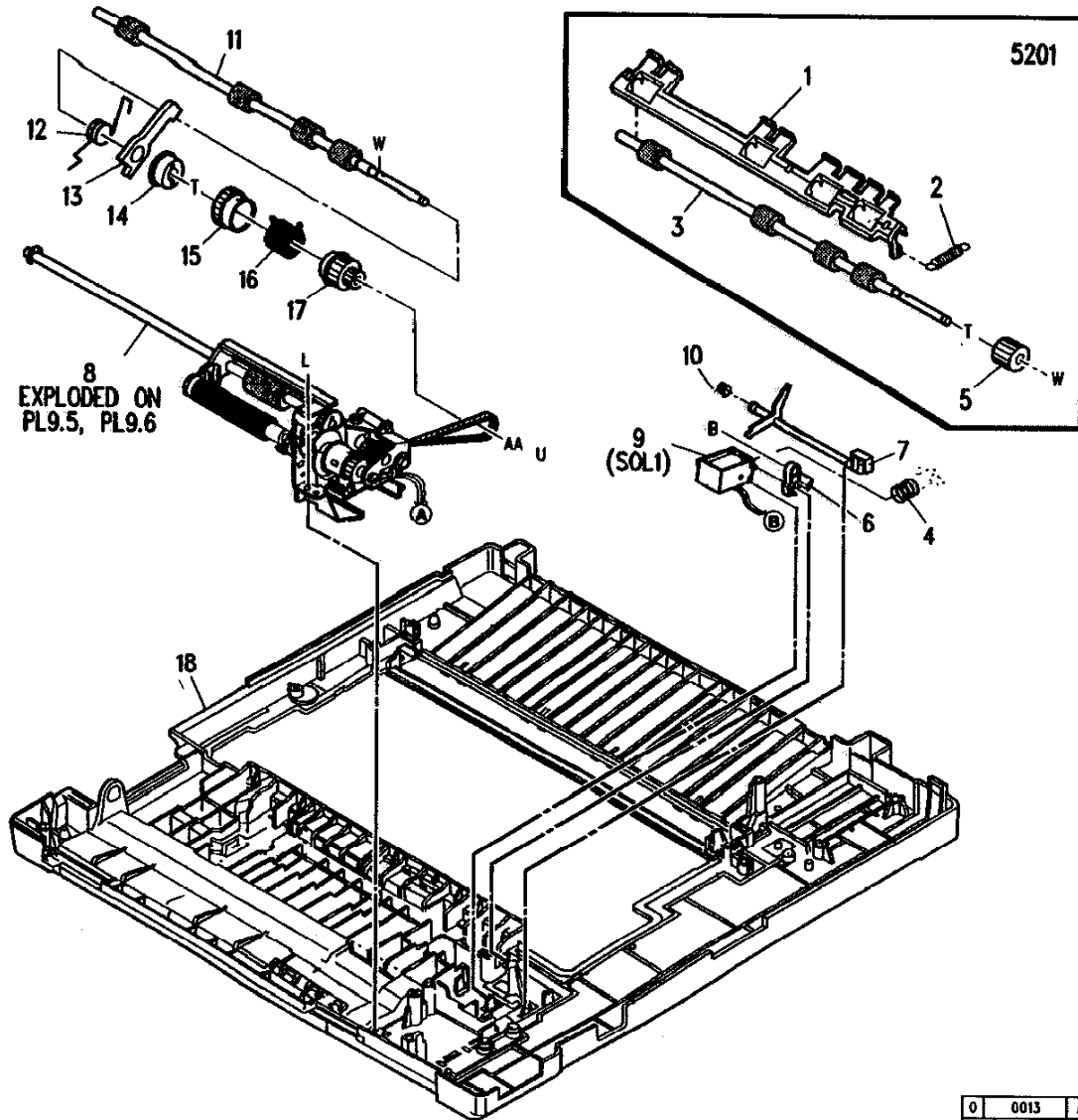
PL 9.2 PAPER TRANSPORT (PART 2 OF 4)



ITEM	PART	DESCRIPTION
1	38E13350	GUIDE (PF)
2	38E13470	GUIDE (MF)
3	9E57481	SPRING (M1) (5203/5305/5306/ XC355/XC356)
4	48E3300	PAPER FEED SLOT COVER (5203/5305/ XC355/XC356)
-	48E4580	PAPER FEED SLOT COVER (5201/XC351)
5	15E40281	INTERLOCK SWITCH PAD PLATE (W/TAG 1)
6	--	CUSHION (MF)
7	38E13500	PAPER FEED GUIDE B
8	9E57160	INTERLOCK SPRING
9	38E13480	INLET GUIDE
10	16E9640	BUSHING
11	--	BASE FRAME (REFER TO PL9.1, ITEM 18)
12	38E13460	GUIDE (5203/5305/ XC355/XC356)
13	6E42620	INTERLOCK SWITCH SHAFT
14	6E42600	INTERLOCK HINGE SHAFT
15	48E3240	INTERLOCK COVER
16	11E5330	INTERLOCK LEVER
17	--	PRESSURE PLATE HOLDER (5203/5305)
18	48E3910	PRESSURE PAD ACCESS COVER

0	0012	A
GUL	PL00	C 1

PL 9.3 PAPER TRANSPORT (PART 3 OF 4)

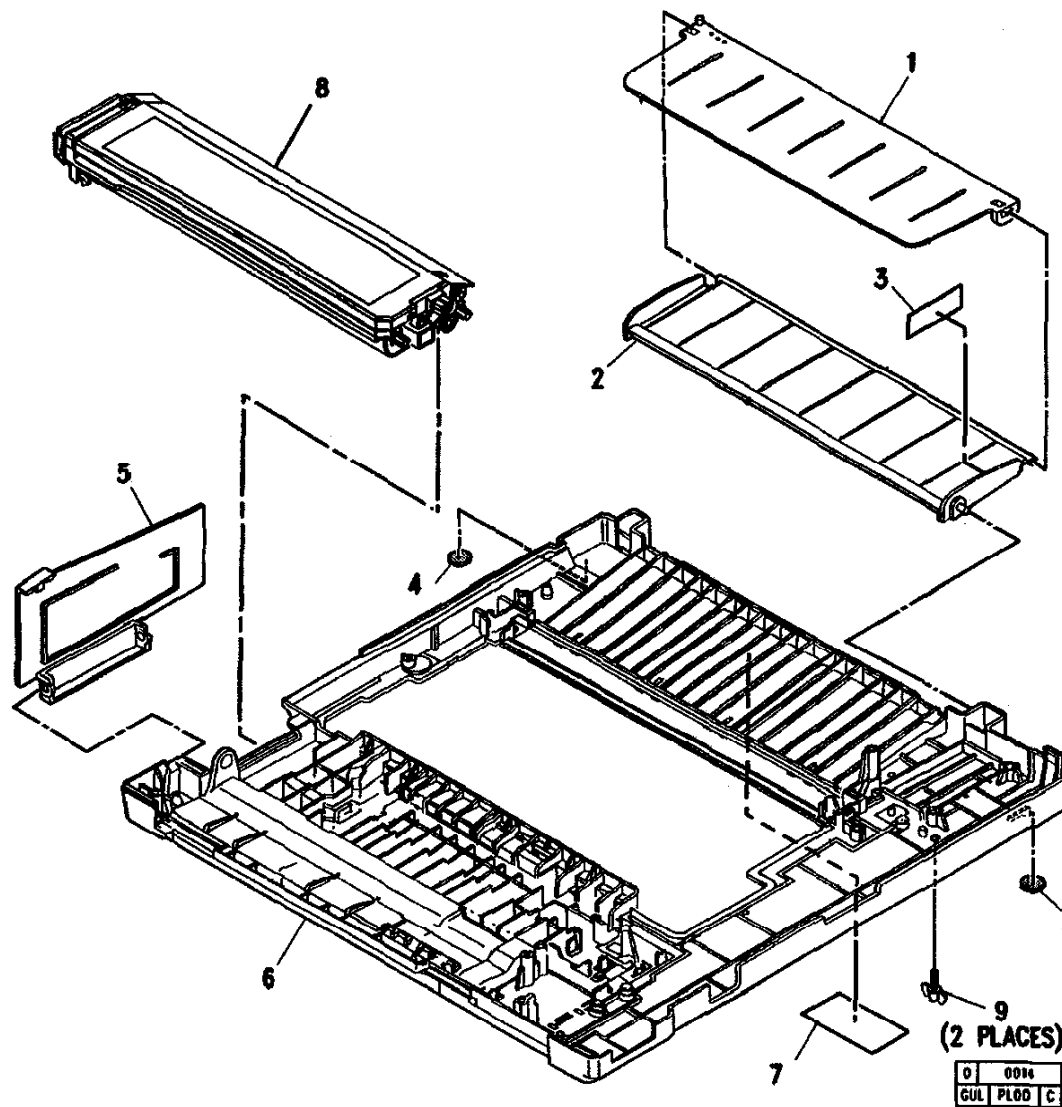


ITEM	PART	DESCRIPTION
1	3E26920	REGISTRATION GATE (5201)
-	3E45020	REGISTRATION GATE (XC351)
2	9E57040	SPRING (5201)
3	22E15210	PAPER FEED ROLLER (5201/XC351)
4	9E57540	PAWL SPRING C (5203/5305/XC355/XC356)
5	7E29150	GEAR (24A)(5201)
6	7E29460	MULTIFEED PAWL C (5203/5305/XC355/XC356)
7	120E16170	PAPER FEED SENSOR ACTUATOR
8	22K37710	MULTIFEED ASSEMBLY (5203/5305/XC355/XC356)
9	121E10111	REGISTRATION SOLENOID (SOL1)(5203/5305/5306/XC355/XC356)
-	121E9870	REGISTRATION SOLENOID (SOL1)(5201/XC351)
10	9E57070	ACTUATOR SPRING
11	22E15440	PAPER FEED ROLLER B (5203/5305/XC355/XC356)
12	9E57570	INTERLOCK LEVER SPRING (5203/5305/XC355/XC356)
13	11E5340	INTERLOCK LEVER (5203/5305/XC355/XC356)
14	5E9510	CLUTCH BOSS (C2)(5203/5305/XC355/XC356)
15	5E9530	COLLAR C (5203/5305/XC355/XC356)
16	9E57590	CLUTCH SPRING C (5203/5305/XC355/XC356)
17	5E9500	CLUTCH BOSS C (5203/5305/XC355/XC356)
18	--	BASE FRAME (REFER TO PL9.1, ITEM 18)

0	0013	A
GUL	PLDD	C 02



PL 9.4 PAPER TRANSPORT (PART 4 OF 4)

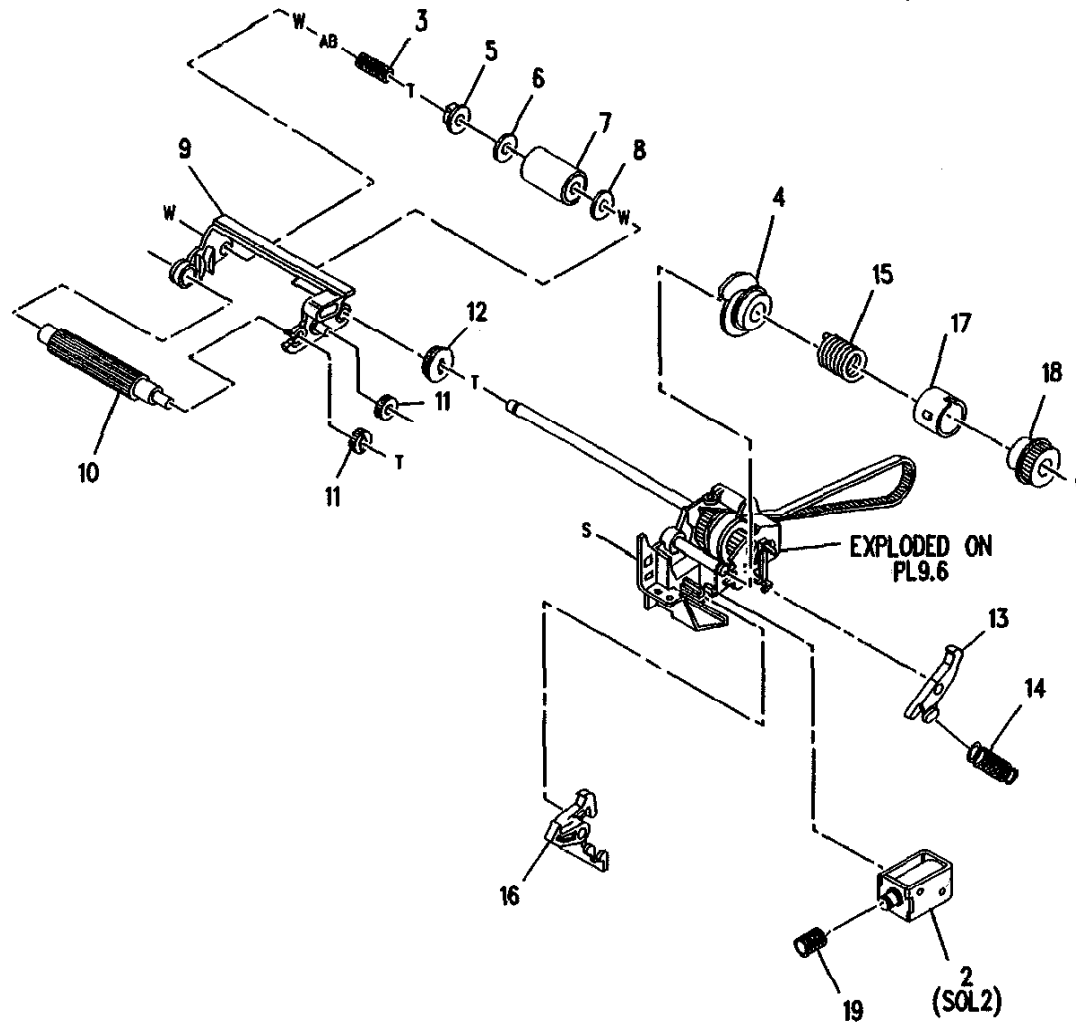


ITEM	PART	DESCRIPTION
1	50E14310	EXIT TRAY (#2) (5203/5305/XC355)
-	50E14290	EXIT TRAY (#2) (5306/XC356)
2	50E14300	EXIT TRAY (#1) (5203/5305/XC355)
-	50E14280	EXIT TRAY (#1) (5306/XC356)
3	--	TRAY LABEL
4	17E6040	RUBBER FOOT
5	48E3330	FRONT DOOR
6	--	BASE FRAME (REFER TO PL9.1, ITEM 18)
7	--	SERVICE LABEL
8	--	TONER CARTRIDGE
9	26E43850	SHIPPING SCREW (2)

0 0014 B  
GUL PLOD C 2

PL 9.5 MULTIFEED ASSEMBLY (PART 1 OF 2)

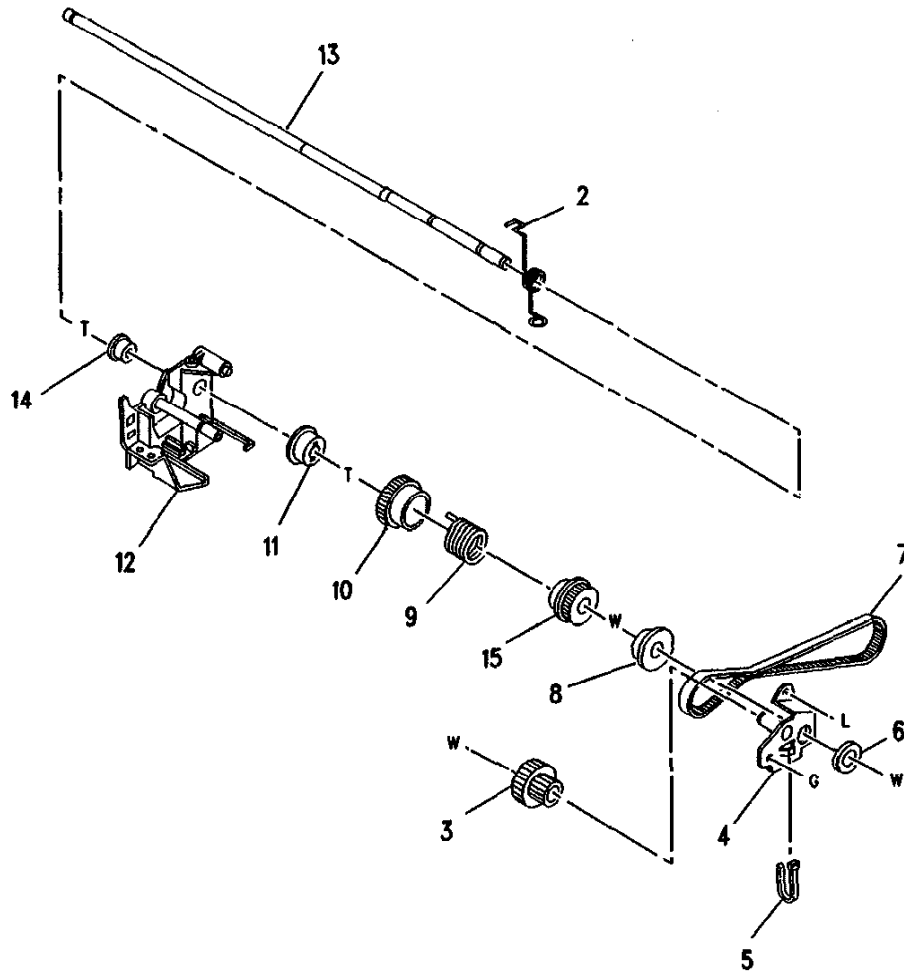
1 } 2 - 19



ITEM	PART	DESCRIPTION
1	--	PART OF MULTIFEED ASSEMBLY (REFER TO PL9.3, ITEM 18)(5305)
2	121E10100	PAPER FEED SOLENOID (SOL2)
3	9E57490	SPRING (M3)
4	5E9550	CAM BOSS B COLLAR
5	--	BEARING B (MF) (P/O ITEM 1)
6	--	SHEET (M2) (P/O ITEM 1)
7	--	ROLLER (M1)
8	--	SPACER (P/O ITEM 1)
9	31E6910	ARM C
10	22E20680	TAKE UP ROLLER (5203/5305/5306)
-	22E22190	TAKE UP ROLLER (XC355/356)
11	7E29490	GEAR (16B)
12	7E29480	GEAR (20B)
13	--	MANUAL PAPER FEEDING PAWL A
14	9E57530	SPRING A
15	9E57580	CLUTCH SPRING B
16	7E29470	MULTIFEED PAWL B
17	5E9520	COLLAR B
18	5E9540	CAM BOSS A1 COLLAR
19	9E57470	SPRING B

PL 9.6 MULTIFEED ASSEMBLY (PART 2 OF 2)

1 { 2 - 15



ITEM	PART	DESCRIPTION
1	--	PART OF MULTIFEED ASSEMBLY (REFER TO PL9.3, ITEM 18)(5305)
2	--	SPRING ARM C (P/O ITEM 1)
3	7E29500	GEAR (20.20 MXL)
4	48E3900	BRACKET
5	--	CABLE TIE (P/O ITEM 1)
6	16E9650	BUSHING
7	--	BELT (P/O ITEM 1)
8	--	BELT ROLLER (P/O ITEM 1)
9	9E57550	CLUTCH SPRING A
10	--	PIPE (A)(P/O ITEM 1)
11	5E9560	CAM BOSS A2 COLLAR
12	49E13390	BRACKET
13	6E42780	CAM BOSS A SHAFT
14	--	BUSHING (P/O ITEM 1)
15	5E9540	CAM BOSS A1 COLLAR

0	0015	A
GUL	PL00	C 00

ITEM	PART	DESCRIPTION
1	600K23760	HARDWARE KIT
A	--	SCREW (P/O ITEM 1)
B	--	RETAINING RING (P/O ITEM 1)
C	--	SCREW (M3 X 4KS) (P/O ITEM 1)
D	--	SCREW (M3 X 6K) (P/O ITEM 1)
E	--	SCREW (3 X 6K) (P/O ITEM 1)
F	--	SCREW (M3 X 4) (P/O ITEM 1)
G	--	SCREW (M3 X 6KS) (P/O ITEM 1)
H	--	SCREW (M3 X 10KS) (P/O ITEM 1)
J	--	SCREW (M2.6 X 5) (P/O ITEM 1)
K	--	SCREW (M3 X 6) (P/O ITEM 1)
L	--	SCREW (M3 X 8) (P/O ITEM 1)
M	--	SCREW (M4 X 20) (P/O ITEM 1)
N	--	SCREW (M2.3 X 5) (P/O ITEM 1)
P	--	SCREW (M3 X 8) (P/O ITEM 1)
R	--	SCREW (M3 X 4) (P/O ITEM 1)
S	--	SCREW (M3 X 8) (P/O ITEM 1)
T	--	PIN (P/O ITEM 1)
U	--	E-RING (P/O ITEM 1)
V	--	E-RING (P/O ITEM 1)
W	--	E-RING (P/O ITEM 1)
X	--	E-RING (P/O ITEM 1)
Y	--	SCREW (M3 X 8) (P/O ITEM 1)
Z	--	WASHER (P/O ITEM 1)
AA	--	WASHER (P/O ITEM 1)
AB	--	WASHER (P/O ITEM 1)
AC	--	WASHER (P/O ITEM 1)
AD	--	E-RING (P/O ITEM 1)

<u>PART NUMBER</u>	<u>PL LOC.</u>	<u>PART NUMBER</u>	<u>PL LOC.</u>	<u>PART NUMBER</u>	<u>PL LOC.</u>	<u>PART NUMBER</u>	<u>PL LOC.</u>	<u>PART NUMBER</u>	<u>PL LOC.</u>	<u>PART NUMBER</u>	<u>PL LOC.</u>
3E26900	2.1										
3E26910	3.1	7E29270	5.3	15E40300	5.3	38E13390	3.1	96P10019	2.1	160K44980	6.1
3E26920	9.3	7E29280	5.3	15E40310	6.1	38E13460	9.2	103K790	6.1	160K45040	6.1
3E26930	2.1	7E29290	1.1	15E40320	3.1	38E13470	9.2	105E4310	9.1	160K48860	6.1
3E26940	2.1	7E29300	7.1	15E40330	5.3	38E13480	9.2	105E4401	9.1	160K48870	6.1
3E27120	2.1	7E29310	3.1	15E40340	3.1	38E13490	2.1	105E4461	9.1	160K48880	6.1
3E27130	2.1	7E29320	3.1	15E40350	4.1	38E13500	9.2	108E2200	9.1	160K48890	2.1
3E27140	8.1	7E29460	9.3	16E9550	5.2	38E13780	2.1	108E2980	9.1	162K1320	6.1
3E27320	2.1	7E29470	9.5	16E9560	5.1	38E19040	2.1	115E3960	7.1	162K1330	6.1
3E30510	2.1	7E29480	9.5	16E9570	1.1	38E19360	8.1	116E6440	7.1	162K1340	9.1
3E34350	1.1	7E29490	9.5	16E9580	5.3	48E3210	5.1	116E6450	6.1	162K1360	6.1
3E34360	1.1	7E29500	9.6	16E9640	9.2	48E3230	5.2	116E6460	7.1	162K1370	6.1
3E44620	2.1	7E30030	1.1	16E9650	9.6	48E3240	9.2	117E13340	3.1	162K1390	9.1
3E44630	2.1	8E4840	1.1	17E6040	9.4	48E3250	5.1	117E13351	9.1	162K1400	4.1
3E45020	9.3	9E57030	8.1	19E25450	1.1	48E3260	5.1	118E11120	7.1	162K2501	6.1
4E6190	2.1	9E57040	9.3	19E25460	9.1	48E3270	2.1	120E8252	6.1	600K23760	9.8
4E6200	4.1	9E57050	5.3	19E25470	4.1	48E3280	3.1	120E8260	5.2	891E35720	2.1
4E6211	1.1	9E57070	9.3	19E25480	4.1	48E3290	9.1	120E10860	6.1	891E35730	2.1
4E6291	1.1	9E57080	3.1	19E25490	4.1	48E3300	9.2	120E16170	9.3	891E35740	2.1
5K3461	5.1	9E57090	8.1	19E25500	2.1	48E3310	1.1	121E9861	1.1	891E35750	2.1
5E9470	5.2	9E57101	5.2	19E25511	3.1	48E3320	3.1	121E9870	9.3	891E37280	2.1
5E9500	9.3	9E57110	9.1	19E25521	3.1	48E3330	9.4	121E9881	5.2	891E37290	2.1
5E9510	9.3	9E57120	2.1	19E25530	9.1	48E3340	2.1	121E10100	9.5	891E37300	2.1
5E9520	9.5	9E57130	5.2	19E25540	2.1	48E3350	2.1	121E10111	9.3		
5E9530	9.3	9E57140	3.1	19E27580	4.1	48E3900	9.6	122E1730	7.1		
5E9540	9.5	9E57150	3.1	19E27590	4.1	48E3910	9.2	122E1830	7.1		
5E9540	9.6	9E57160	9.2	20E20500	5.1	48E4560	1.1	122E1870	7.1		
5E9550	9.5	9E57170	5.2	20E20510	5.1	48E4570	1.1	122E2360	7.1		
5E9560	9.6	9E57470	9.5	20E20520	5.1	48E4580	9.2	127E8991	5.1		
6E42600	9.2	9E57481	9.2	22E15180	3.1	48E7630	2.1	127E9000	5.1		
6E42611	5.1	9E57490	9.5	22E15190	9.1	48E7640	9.1	130E6500	6.1		
6E42620	9.2	9E57500	8.1	22E15200	7.1	48E7650	2.1	130E6510	6.1		
6E42631	8.1	9E57510	8.1	22E15210	9.3	48E19970	1.1	160K311	2.1		
6E42640	5.3	9E57520	8.1	22E15220	8.1	48E57830	2.1	160K321	6.1		
6E42650	5.3	9E57530	6.1	22E15440	9.3	48E57840	1.1	160K330	4.1		
6E42660	1.1	9E57530	9.5	22E20680	9.5	48E57850	1.1	160K340	5.1		
6E42780	9.6	9E57540	9.3	22E22190	9.5	48E57860	2.1	160K350	9.1		
7E29090	5.3	9E57550	9.6	22K37710	9.3	48E59100	2.1	160K1791	6.1		
7E29100	5.2	9E57570	9.3	23E11380	5.1	48E59110	2.1	160K1871	9.1		
7E29110	5.2	9E57580	9.5	26E37970	9.1	49E12650	5.3	160K1881	9.1		
7E29120	5.3	9E57590	9.3	26E39050	4.1	49E12660	1.1	160K1891	2.1		
7E29130	5.3	10E3520	1.1	26E43850	9.4	49E13390	9.6	160K1900	4.1		
7E29140	5.3	10E3530	3.1	28E10140	7.1	50E14280	9.4	160K1912	6.1		
7E29150	9.3	10E3570	1.1	29E19120	8.1	50E14290	9.4	160K1922	6.1		
7E29160	5.3	11E5311	9.1	29E19130	3.1	50E14300	9.4	160K4461	6.1		
7E29170	5.3	11E5321	9.1	31E6850	5.2	50E14310	9.4	160K4470	9.1		
7E29180	5.3	11E5330	9.2	31E6860	5.2	50E14320	2.1	160K4480	9.1		
7E29190	5.3	11E5340	9.3	31E6890	8.1	62E7050	4.1	160K4492	6.1		
7E29200	1.1	13E9560	3.1	31E6900	8.1	62E7060	4.1	160K4831	6.1		
7E29210	5.3	13E9570	7.1	31E6910	9.5	90K2060	1.1	160K4841	2.1		
7E29220	1.1	13E9580	5.1	31E6920	8.1	90K2070	1.1	160K32390	6.1		
7E29230	3.1	13E10580	5.1	33E3031	9.1	96P10008	2.1	160K32400	6.1		
7E29240	6.1	14E27000	1.1	38E13341	3.1	96P10009	3.1	160K32410	6.1		
7E29250	5.3	15E40281	9.2	38E13350	9.2	96P10011	2.1	160K32420	6.1		
7E29260	5.3	15E40290	3.1	38E13370	3.1	96P10015	2.1	160K44970	2.1		

